

Model ZX8U-2

Year 2007

Serial HCM1MN00C00010114

Hours 1157

Photos taken at Feb. 24, 2024











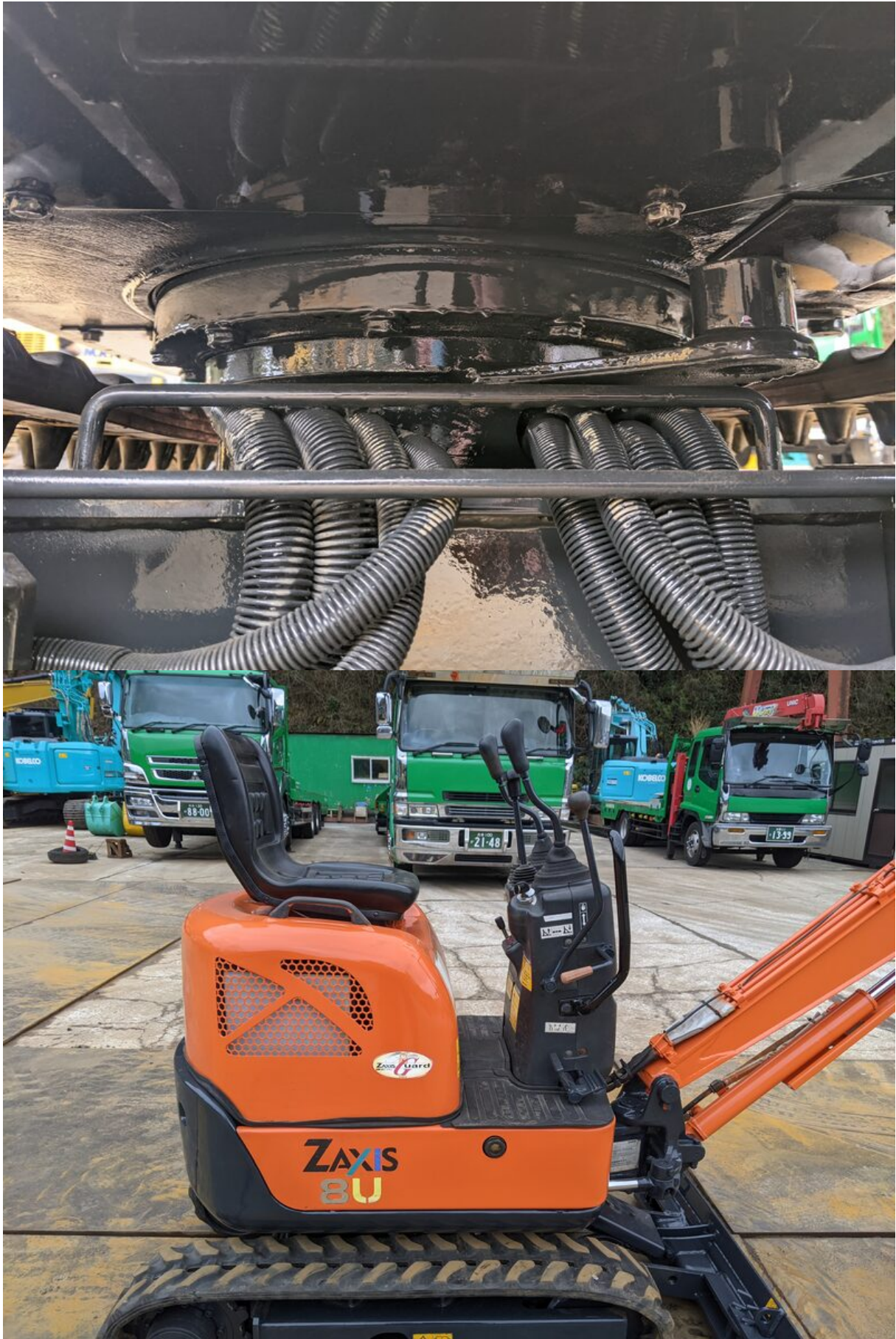












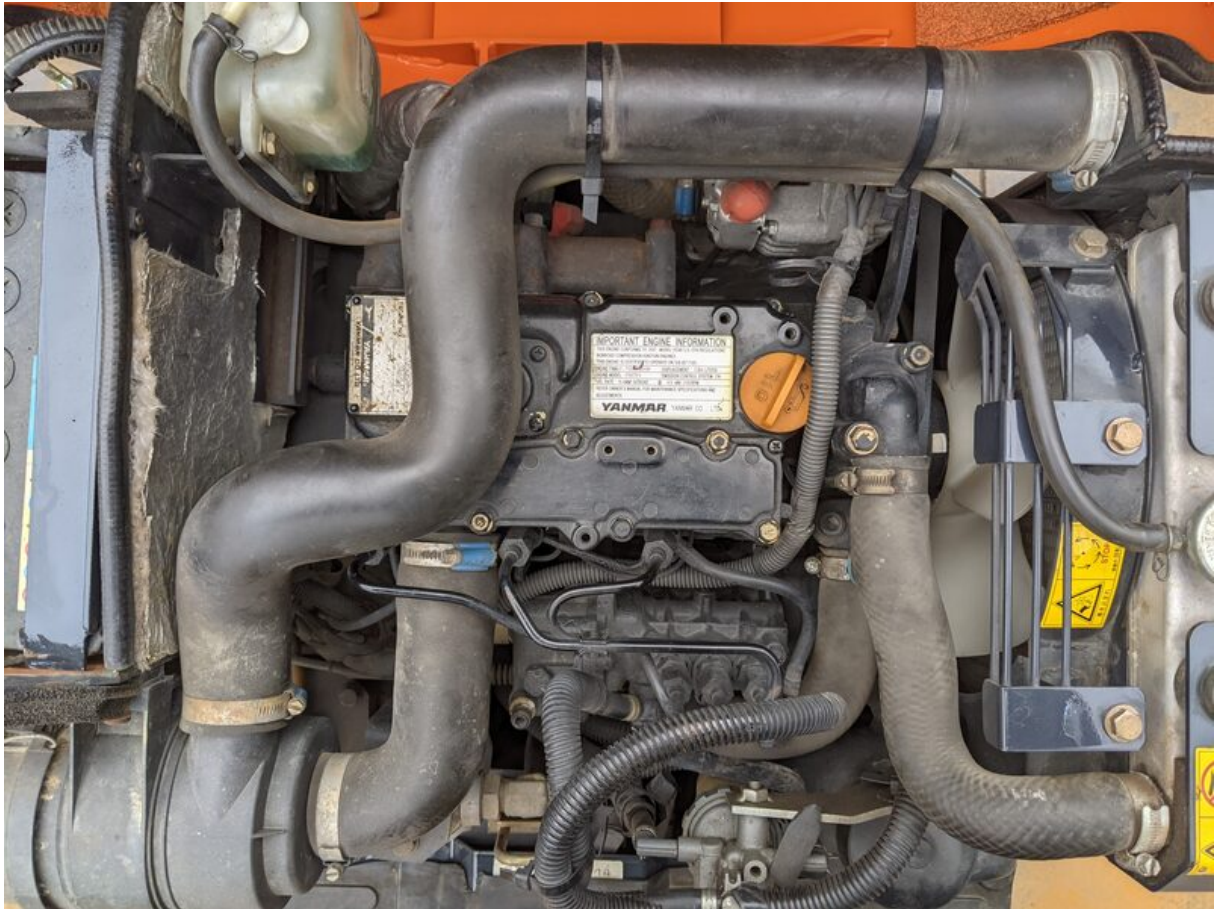
















MODEL	3TNV70-VHB	
DISPLACEMENT	0.854	ℓ
ENGINE NO.	24654	


YANMAR®
 

YANMAR CO., LTD.
 MADE IN JAPAN

IMPORTANT ENGINE INFORMATION

THIS ENGINE CONFORMS TO 2007 - MODEL YEAR U.S. EPA REGULATIONS
 NONROAD COMPRESSION IGNITION ENGINES.
 THIS ENGINE IS CERTIFIED TO OPERATE ON "US-2D" FUEL

ENGINE FAMILY : 7YDXL0.65V3N	DISPLACEMENT : 0.854 LITERS
ENGINE MODEL : 3TNV70-V	EMISSION CONTROL SYSTEM : EM
FUEL RATE : 16.4MM ³ /STROKE	@ 9.9 kW/ 2100RPM

REFER OWNER'S MANUAL FOR MAINTENANCE SPECIFICATIONS AND
 ADJUSTMENTS

YANMAR YANMAR CO., LTD.

