

Model SK235SRD-3

Serial YF07-03291

Year 2016

Hours 16281

Photos taken at Mar. 15, 2024



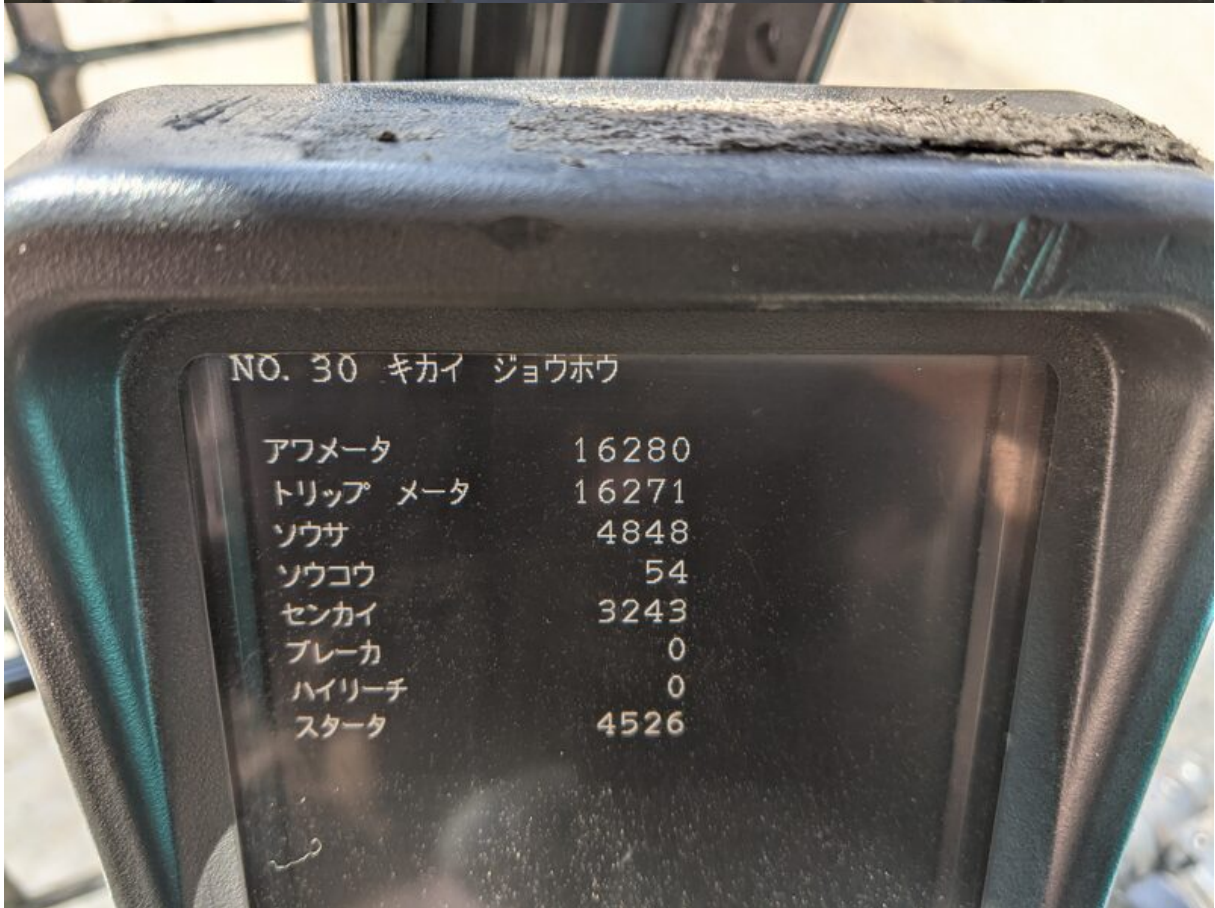




















**SK23... -3**  
クランプアーム付に解体機

車名及び型式	コベルコ WDR-YF07/YU07		
定格出力	117kW/2000min <sup>-1</sup>		
最高走行速度	5.5km/h		
仕様	2.4mアーム	2.94mアーム	労働安全衛生法による最も不利な仕様
	5.65mアーム 増量ウェイト	5.65mアーム 増量ウェイト	
シユ-幅	600mm	600mm	600mm
機体質量	25100kg	27900kg	30300kg
機械質量	31000kg	34000kg	36700kg
機械総質量	32400kg	35300kg	38000kg
平均接地圧	76kPa	83kPa	90kPa
アタッチメント 装着可能質量	4300kg	3600kg	3600kg

・機械質量・機械総質量は先端アタッチメント質量を含む。

**コベルコ建機株式会社**

YF20T01366P1























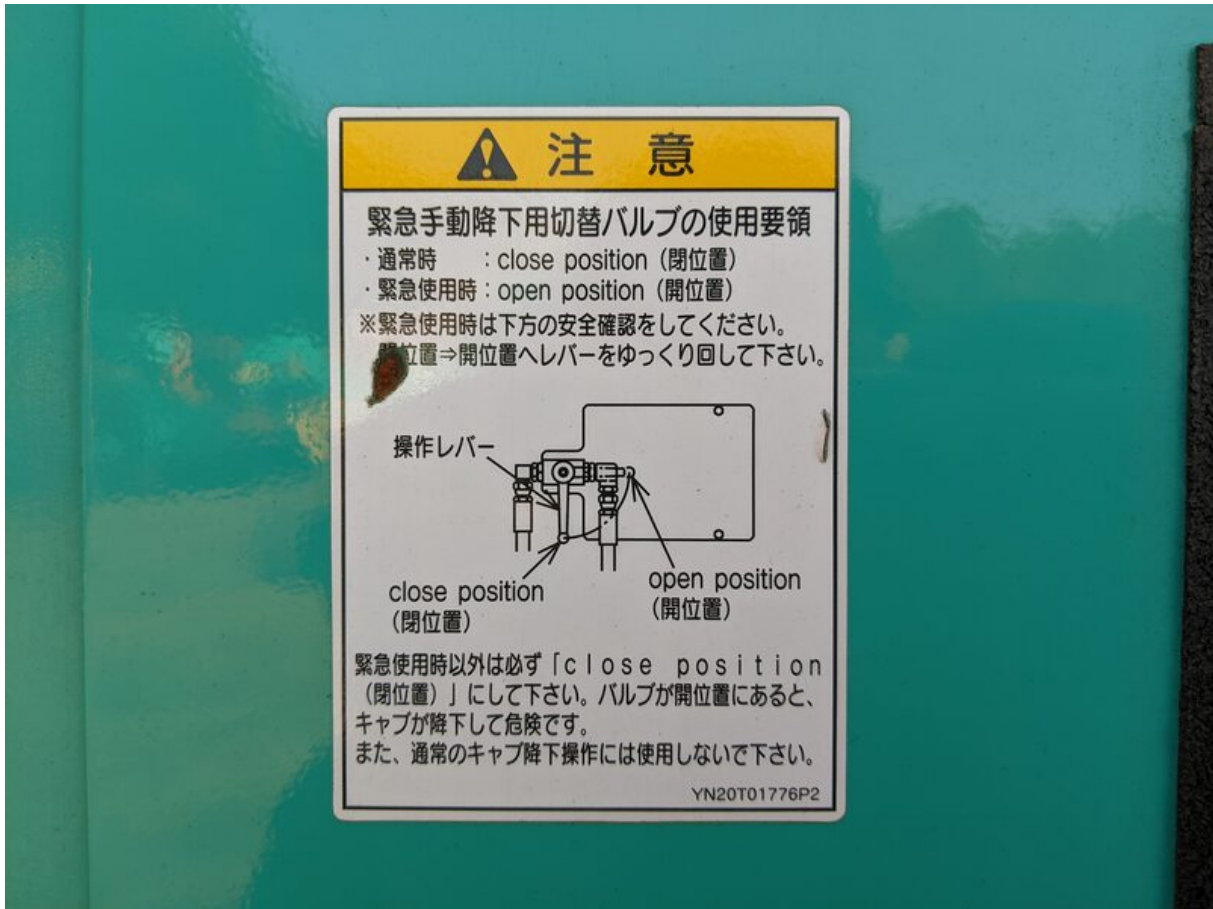




































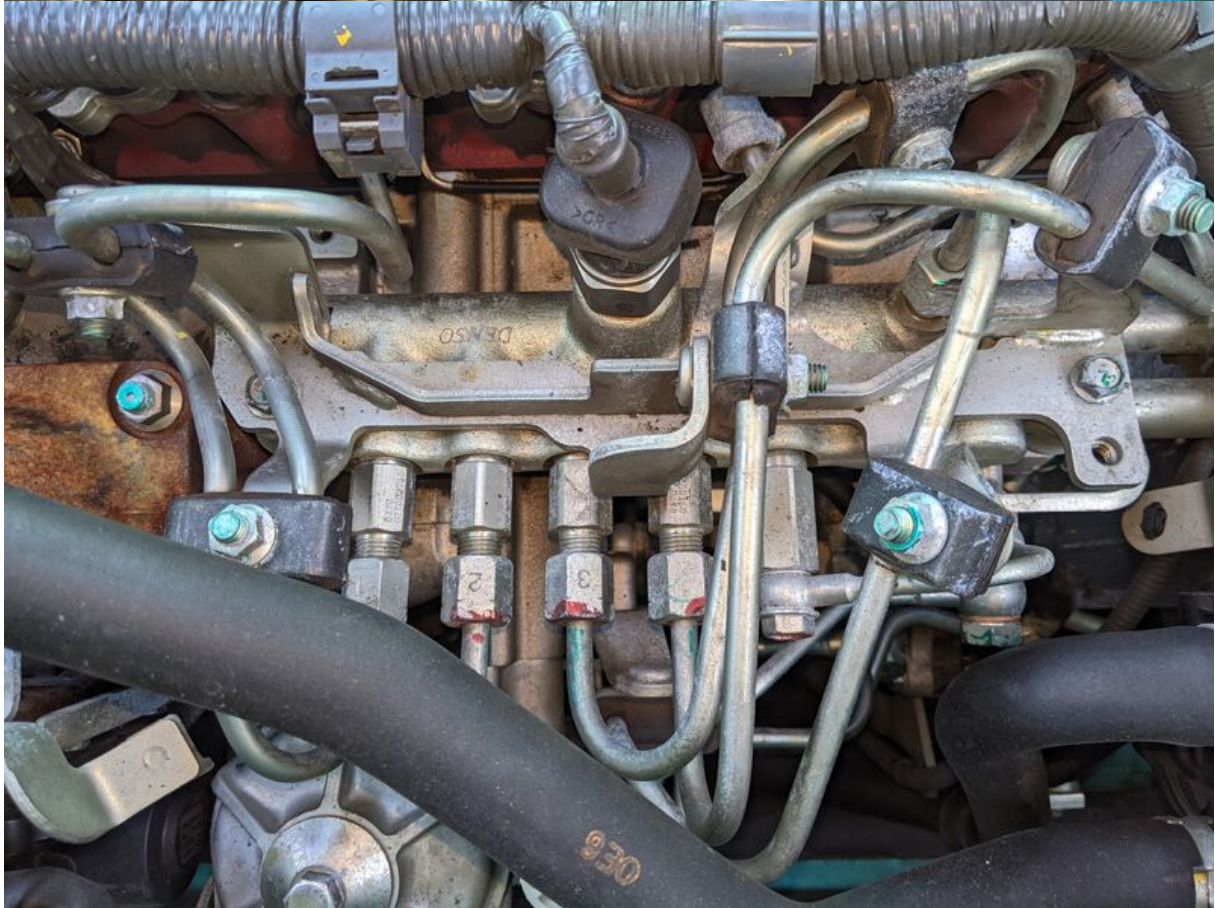
















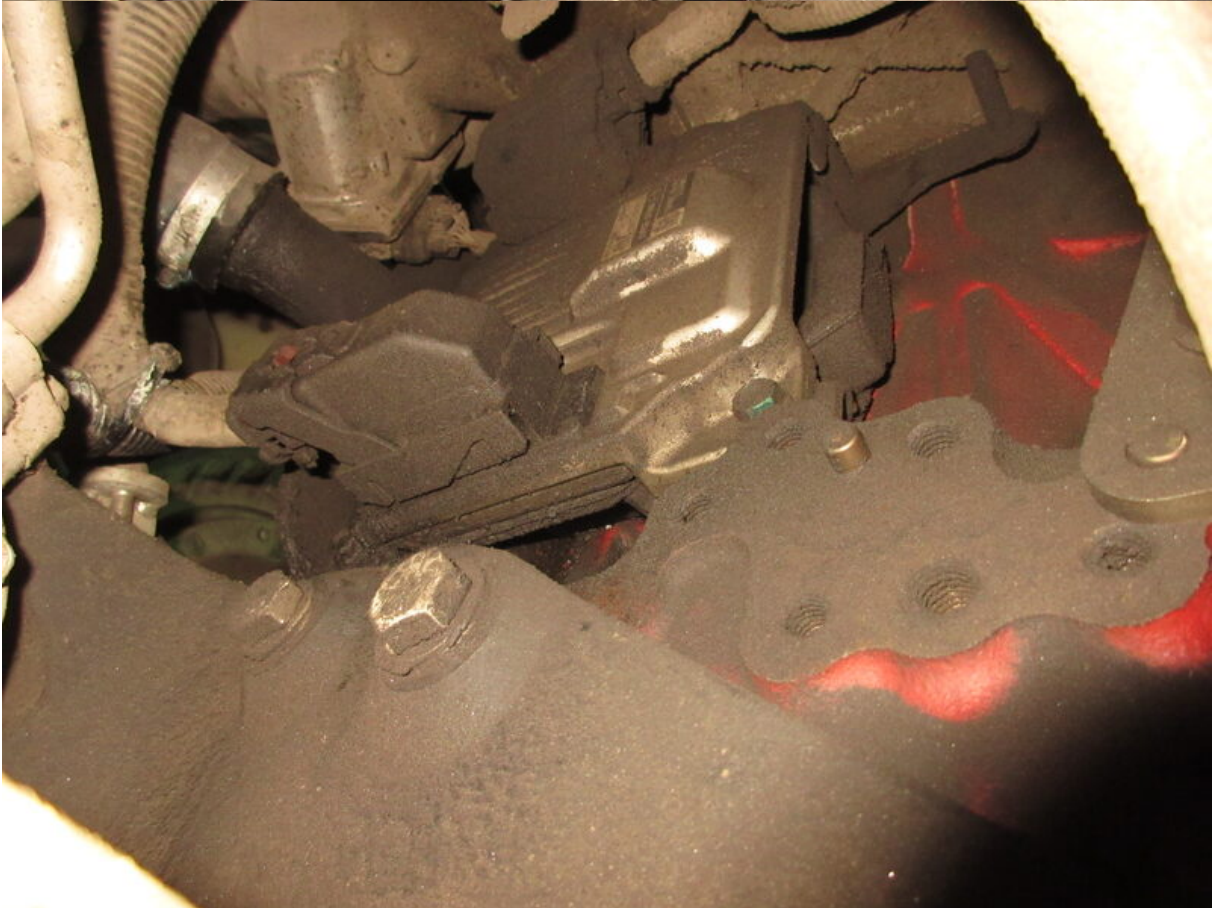




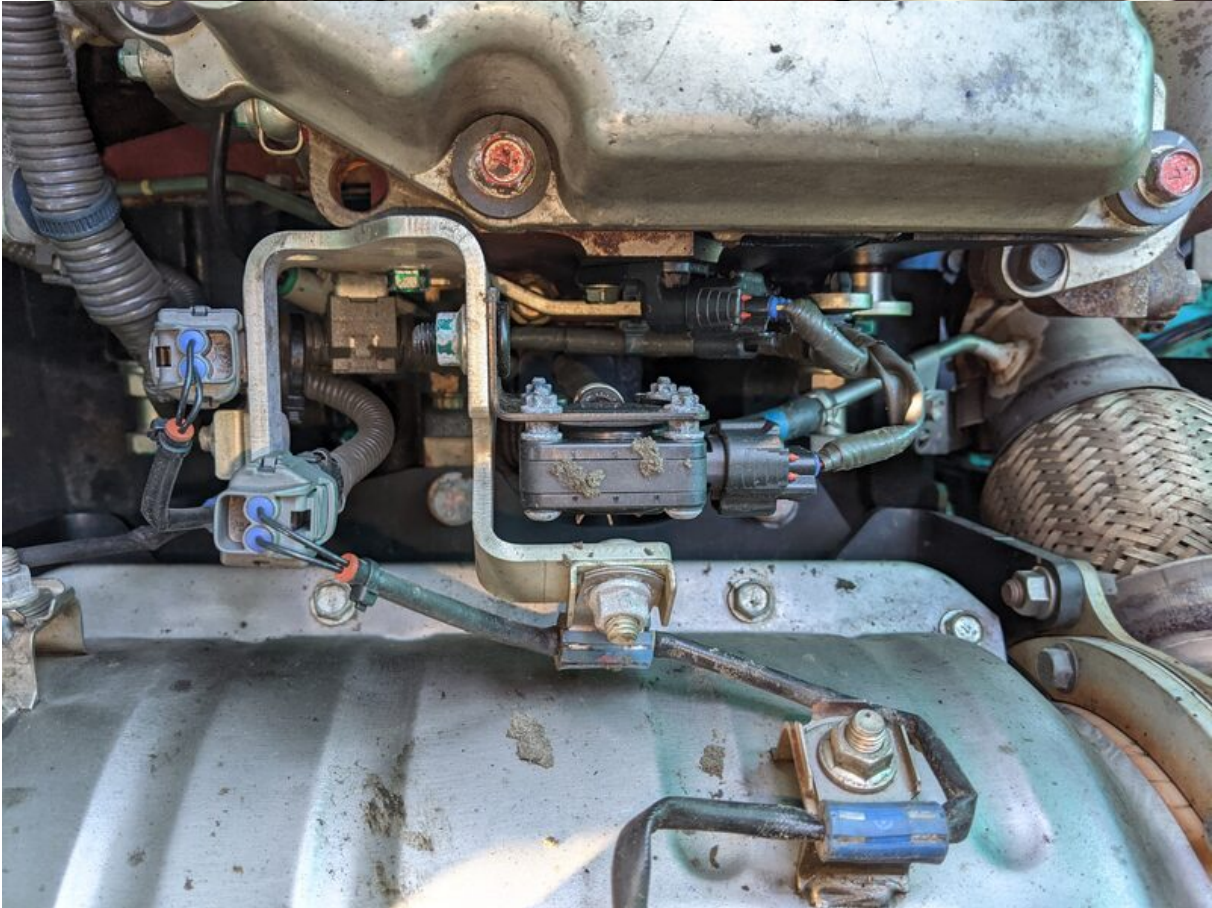
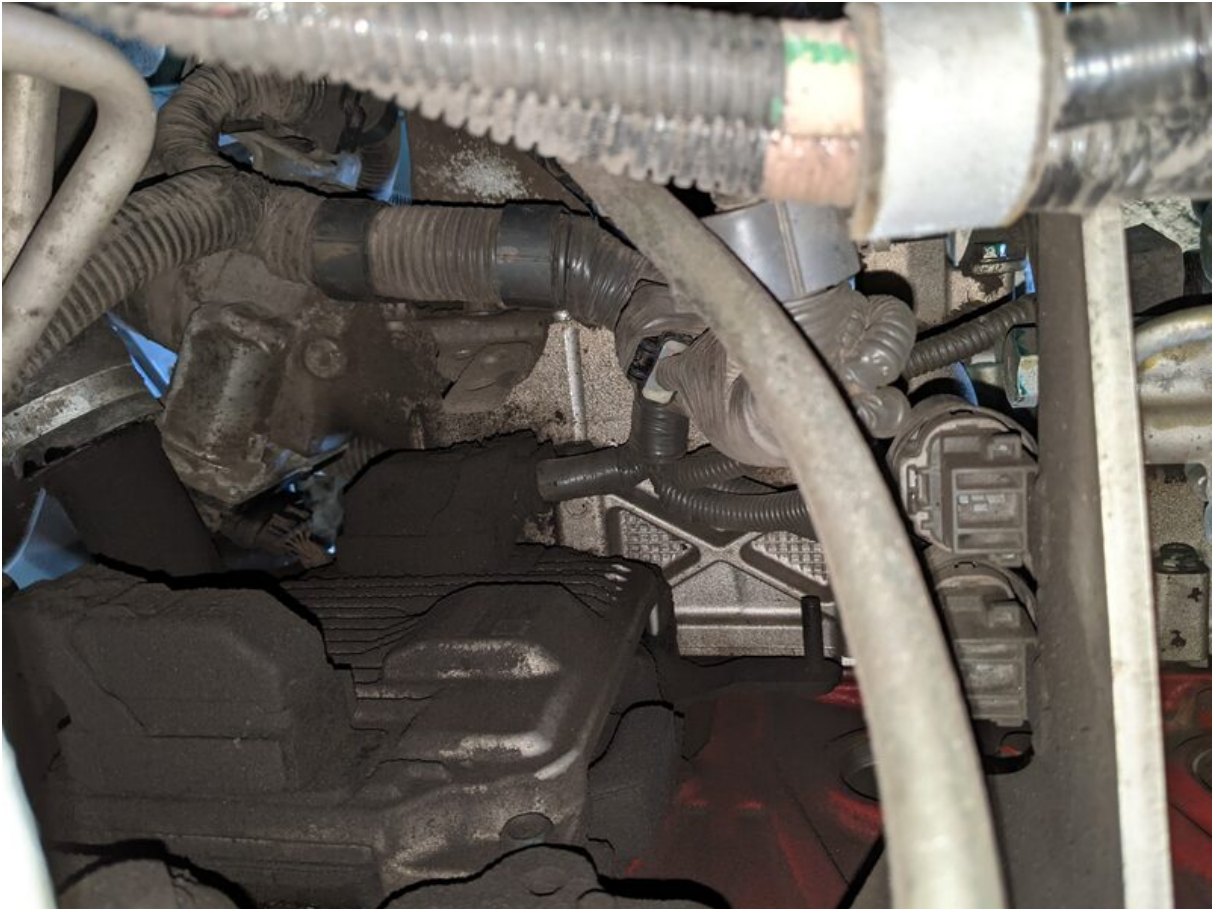




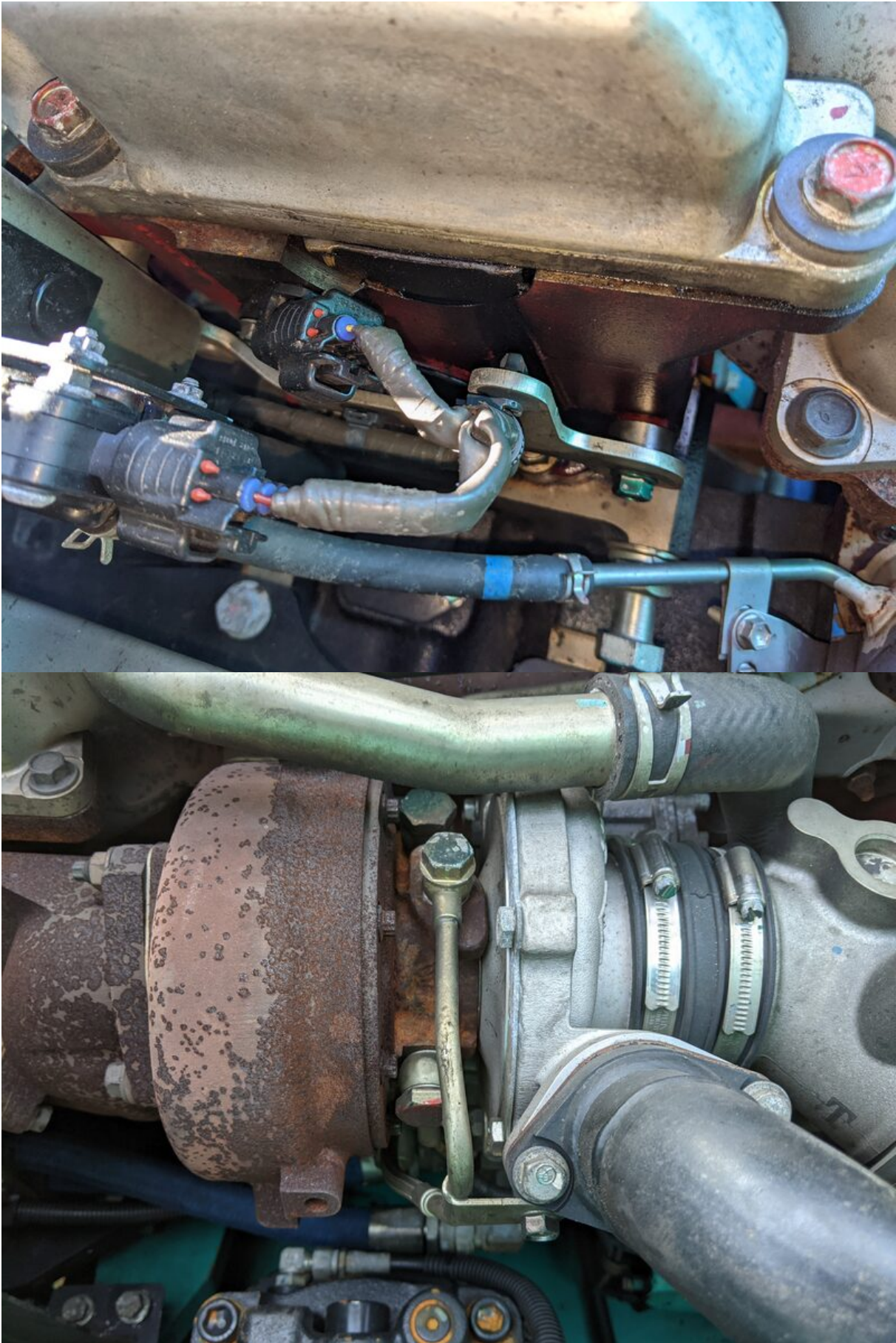




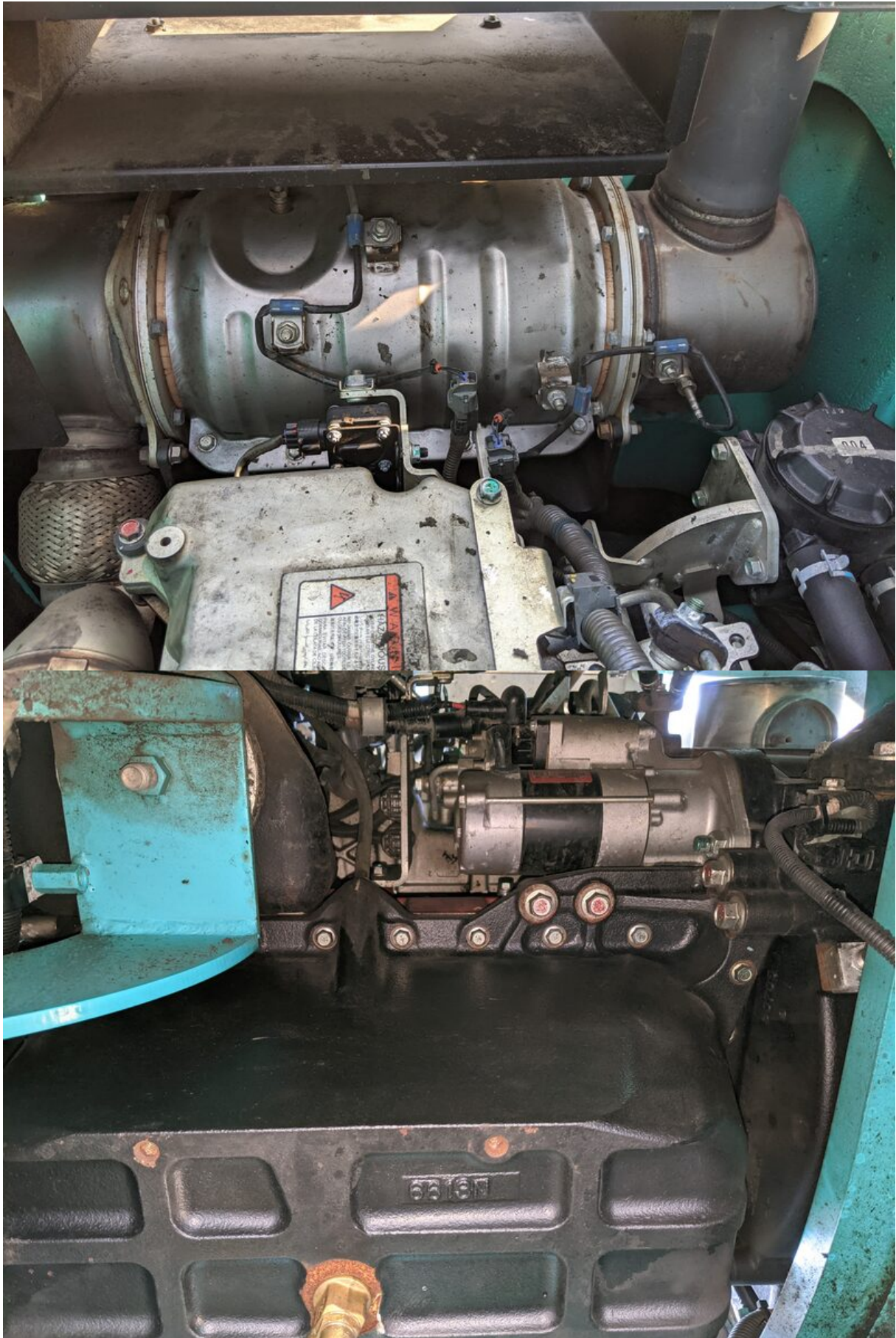
















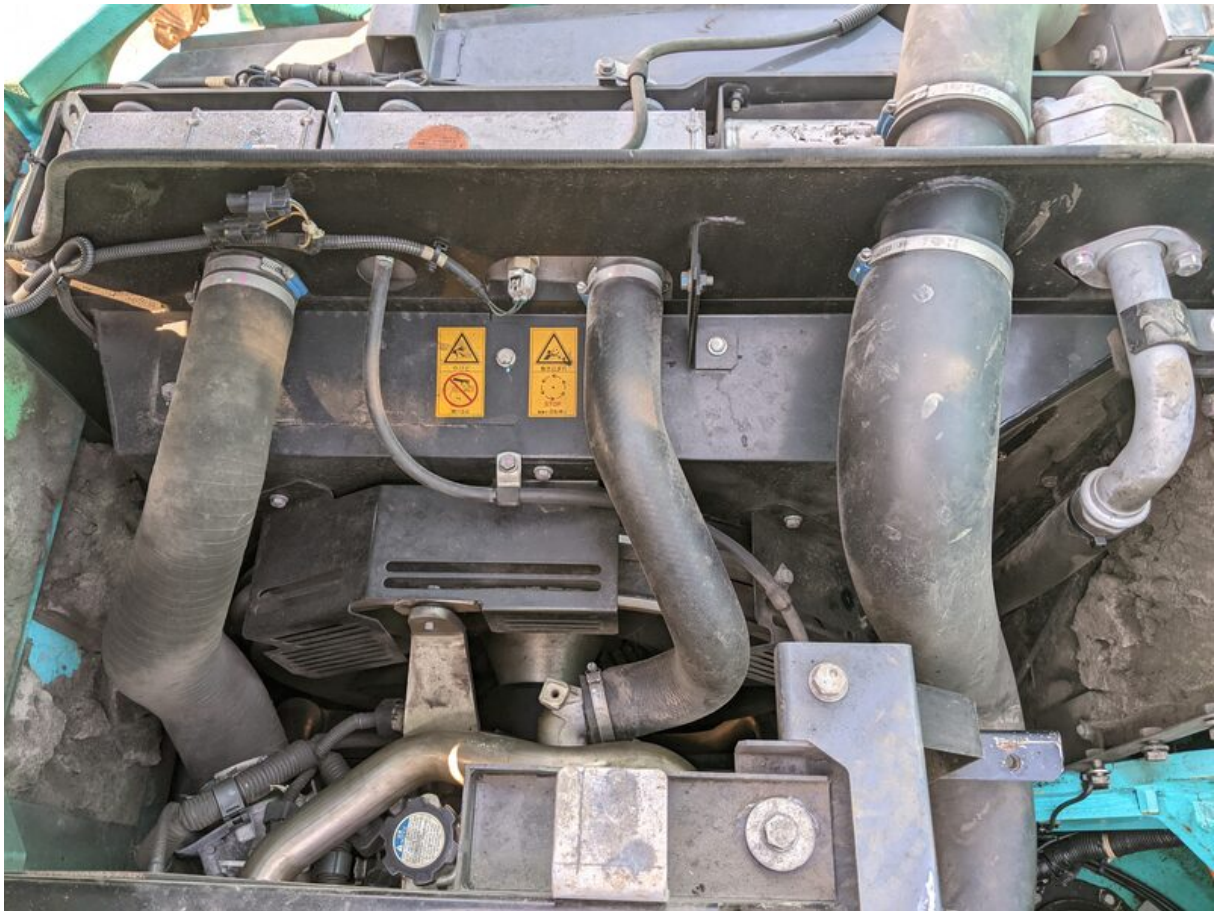




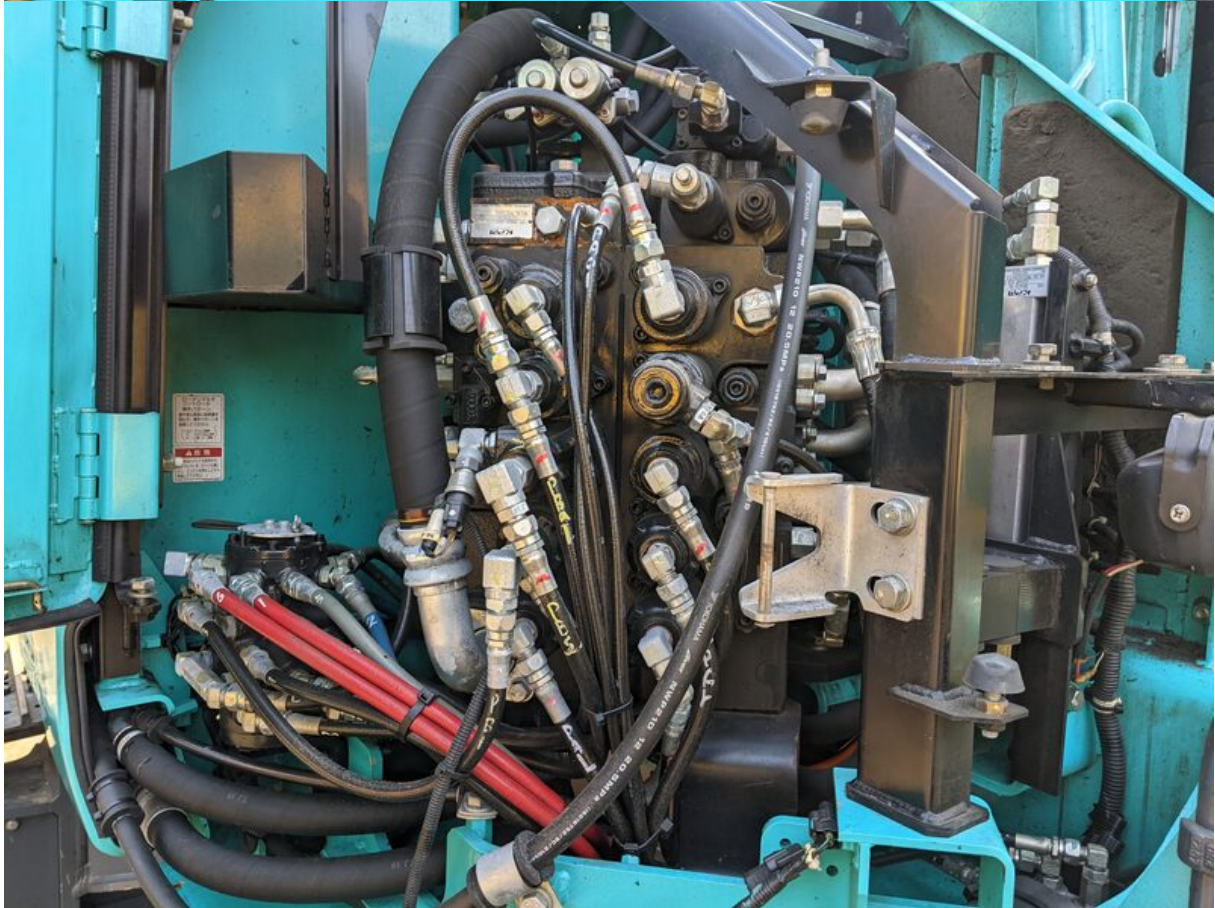
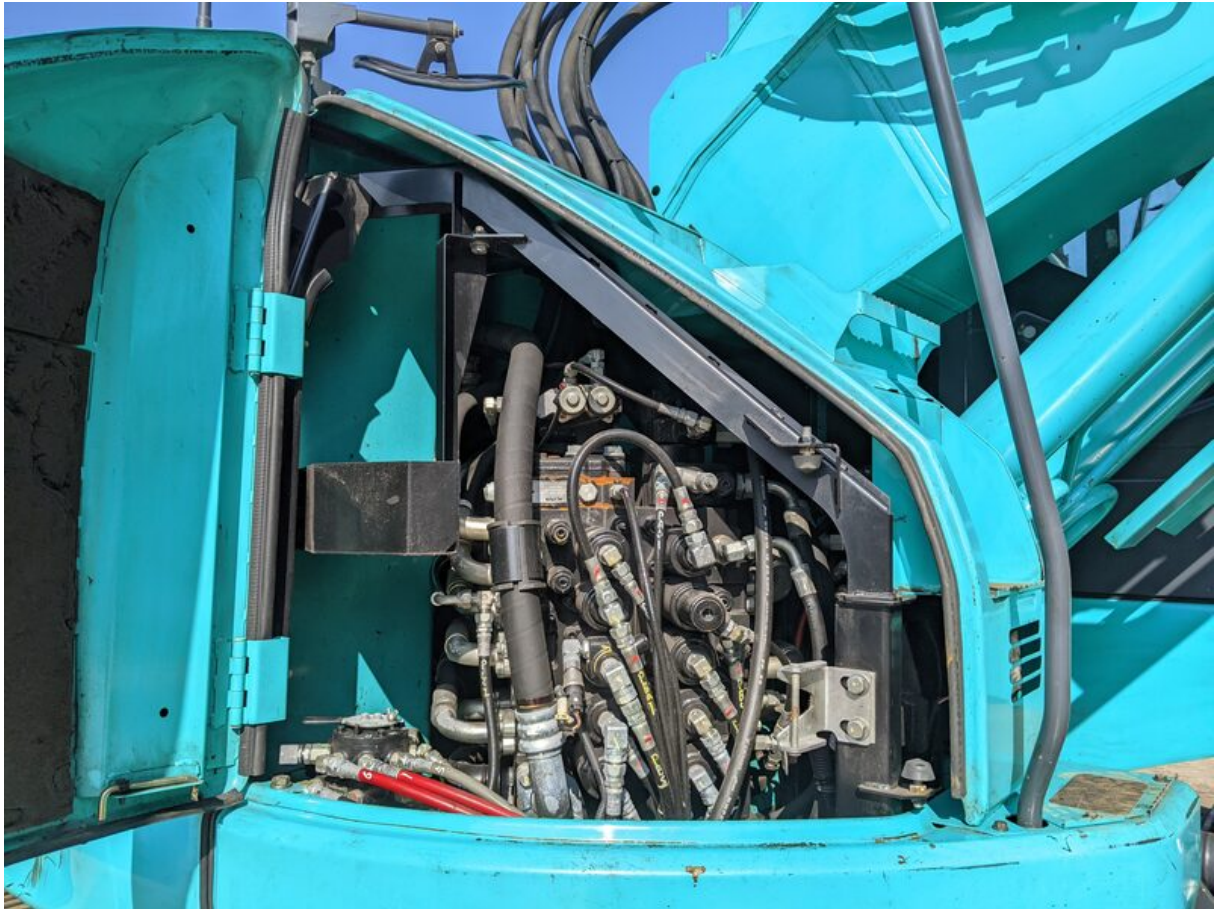




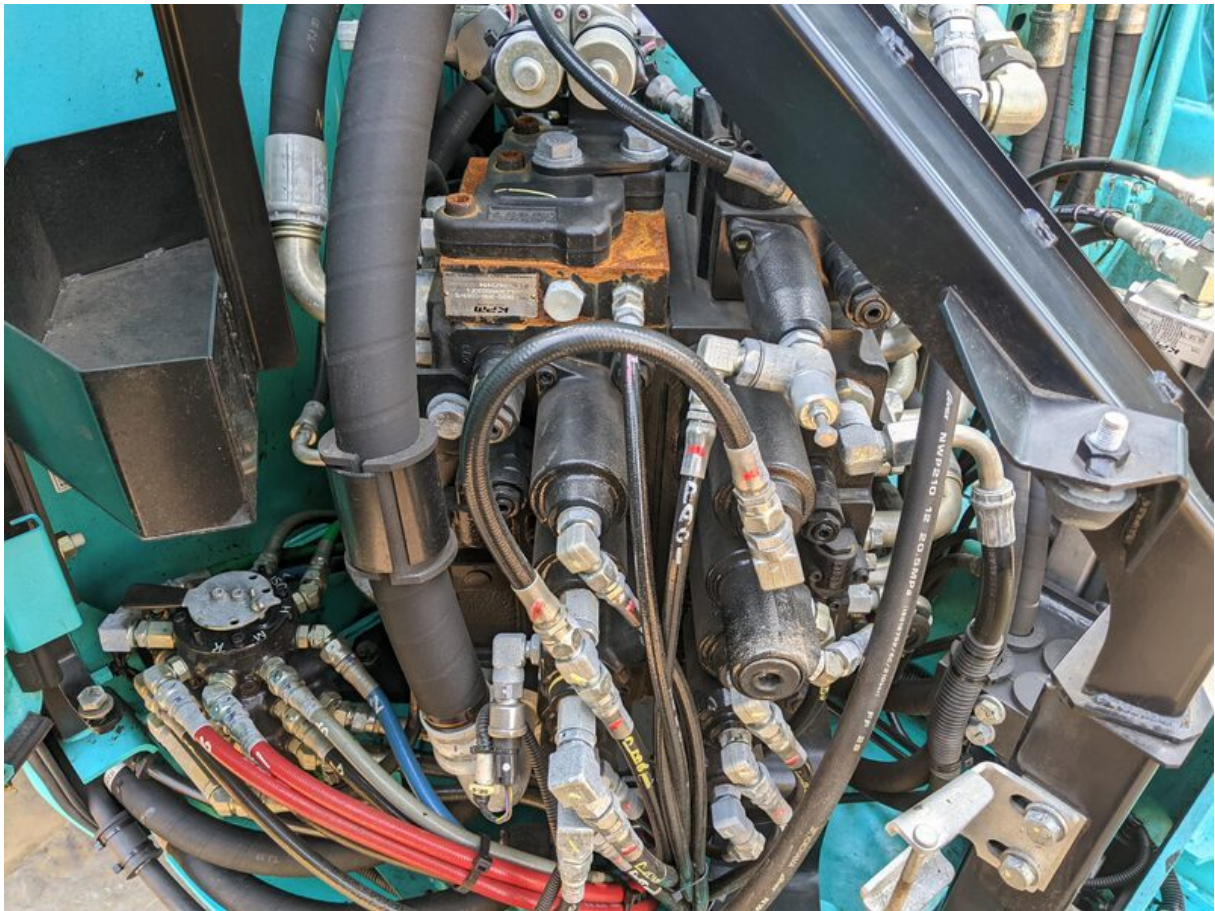




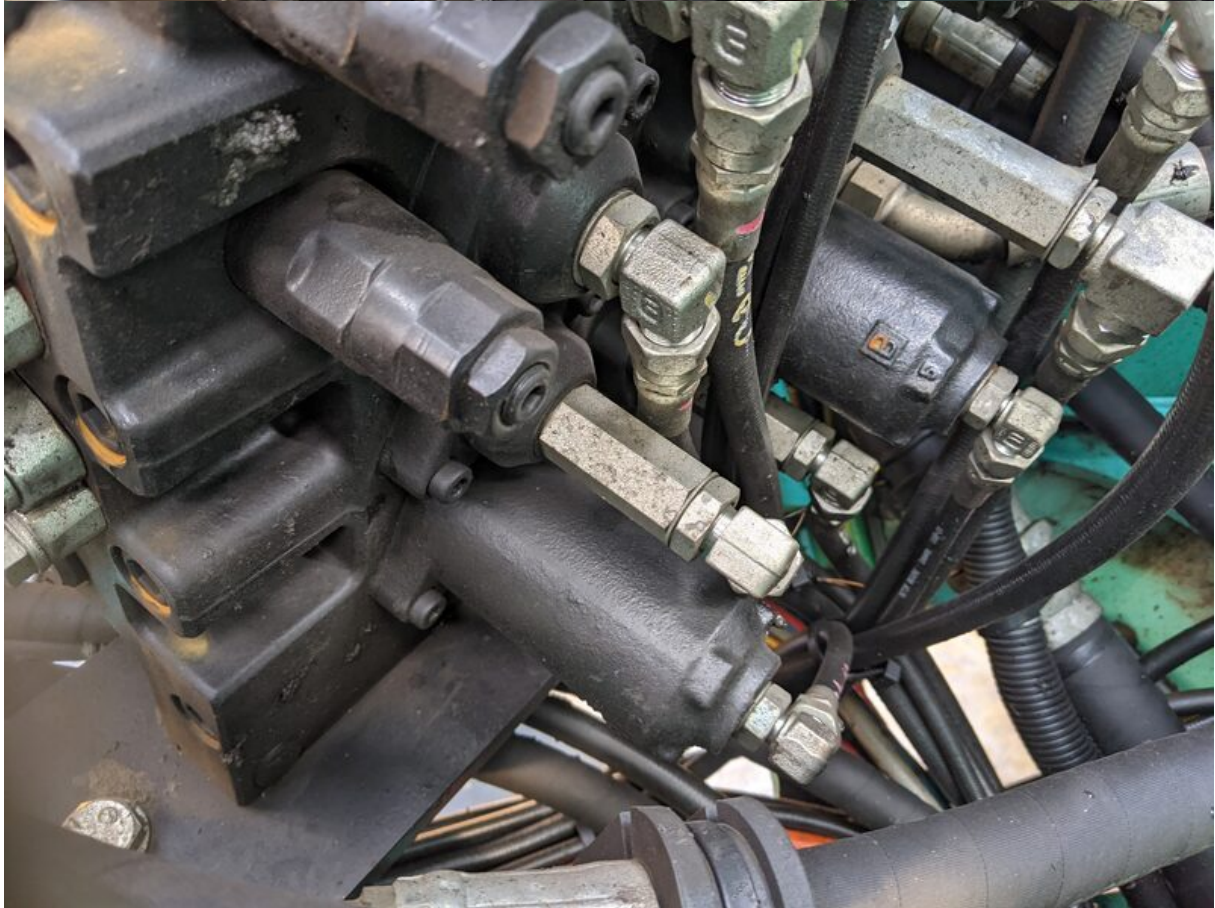
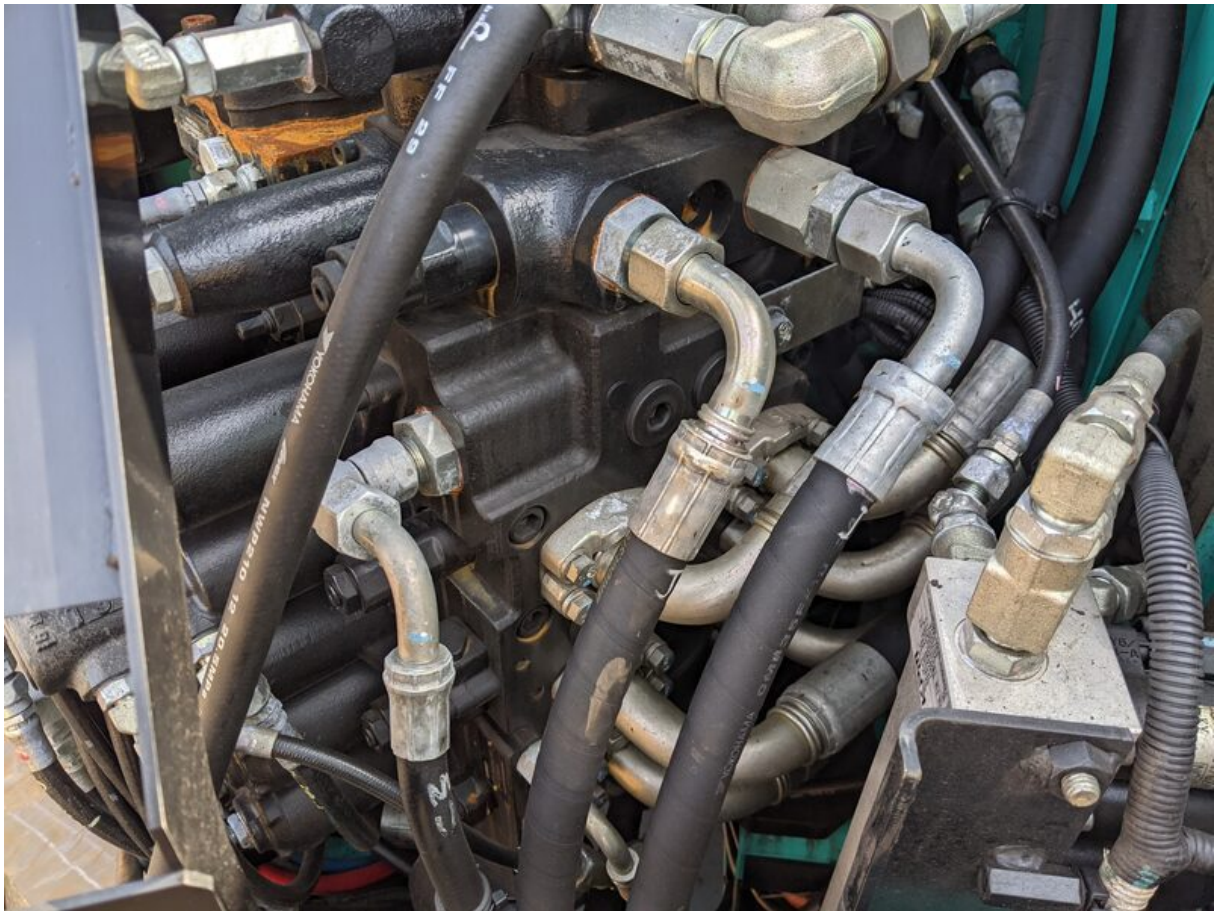




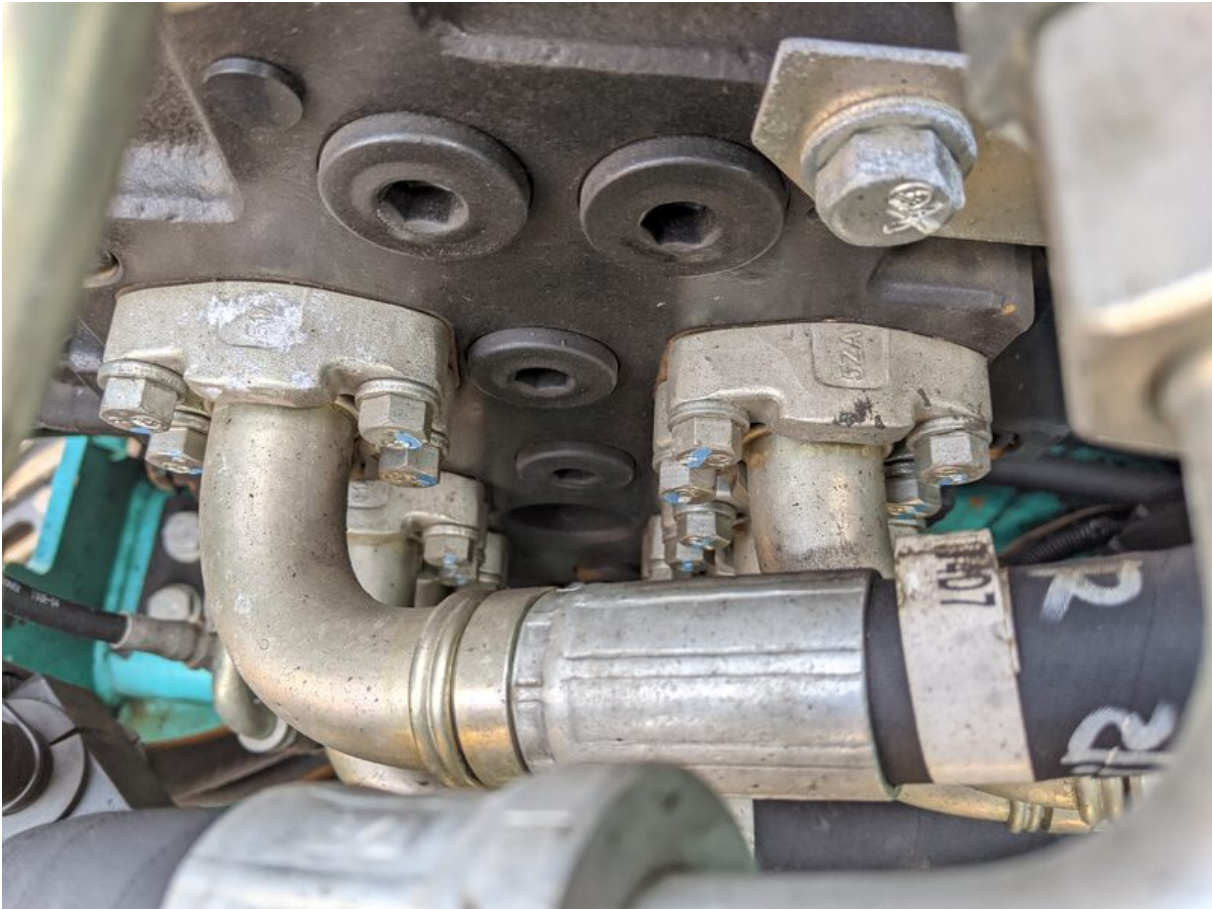




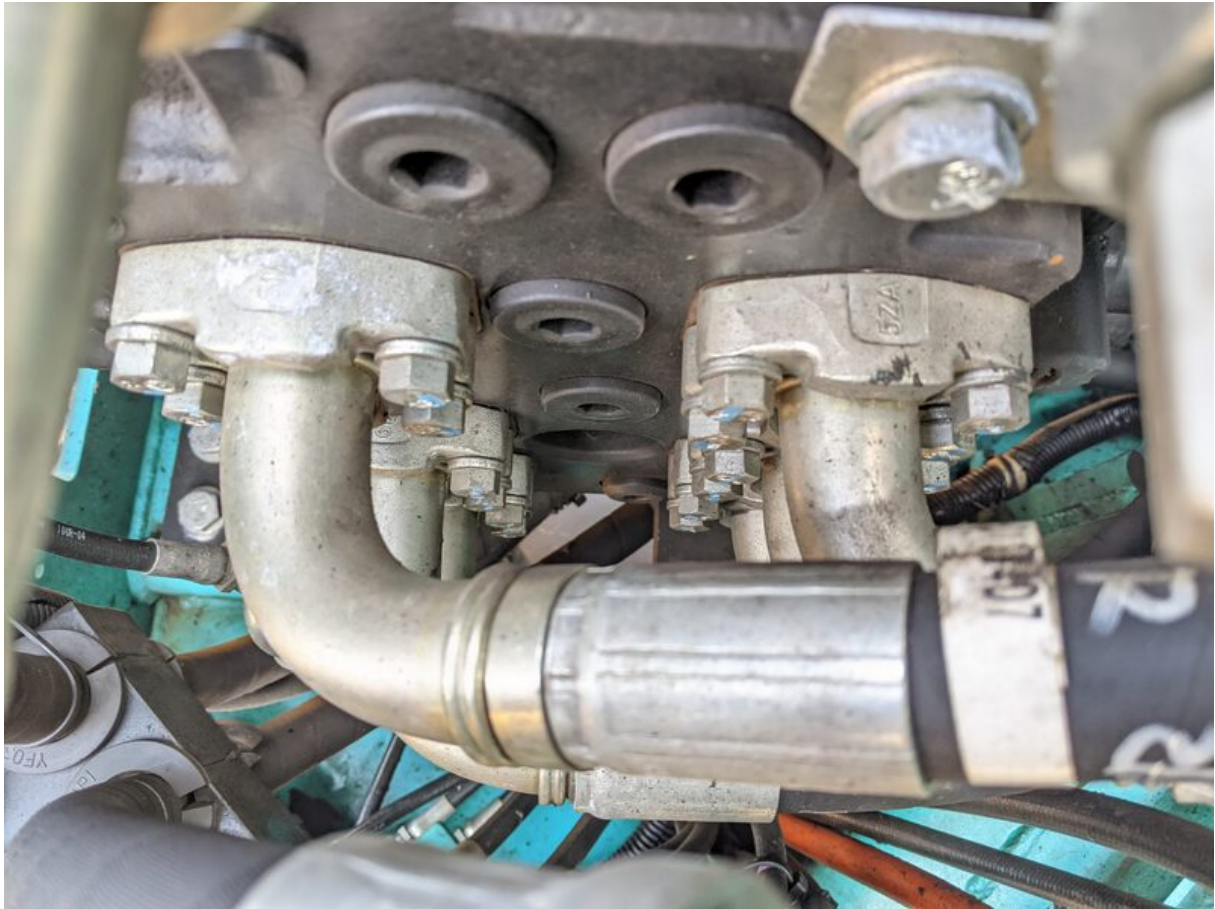




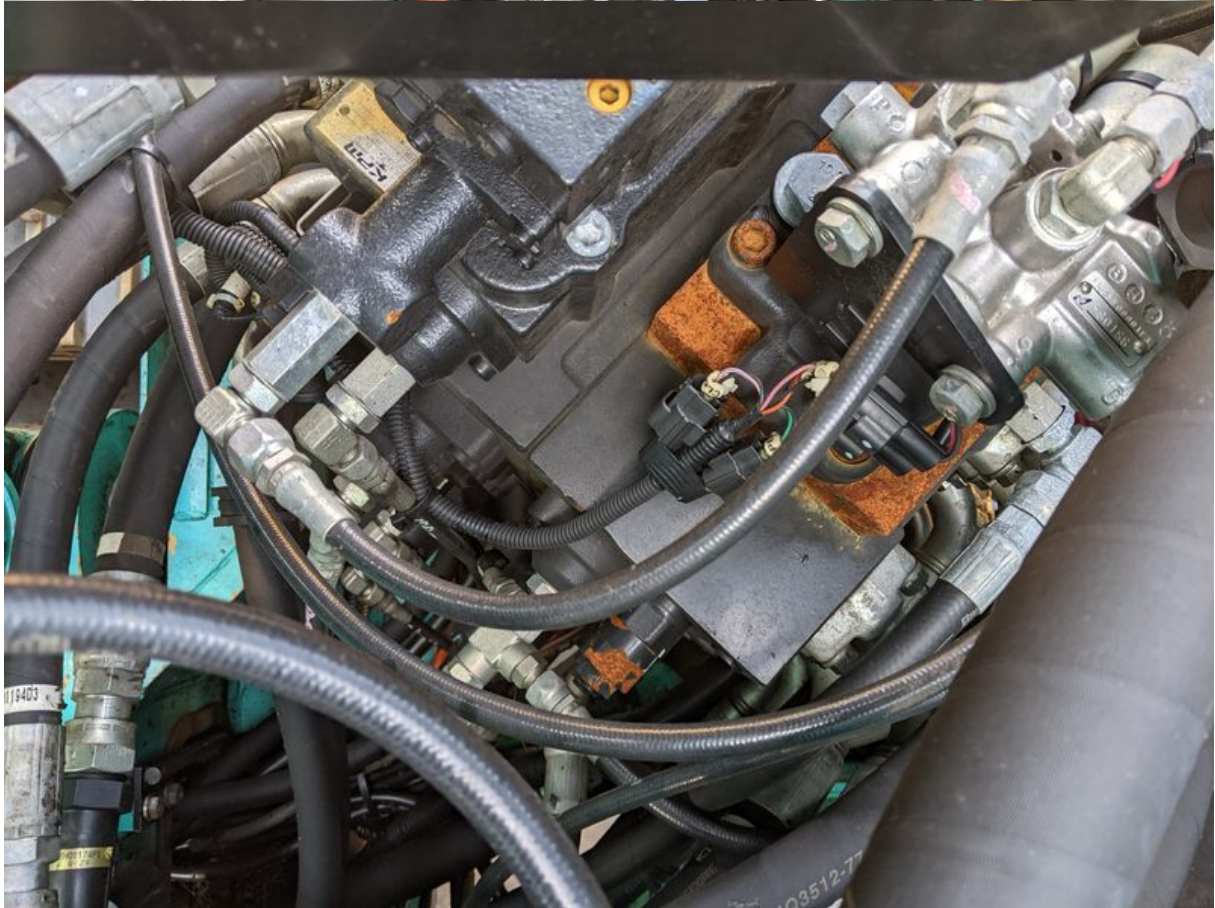
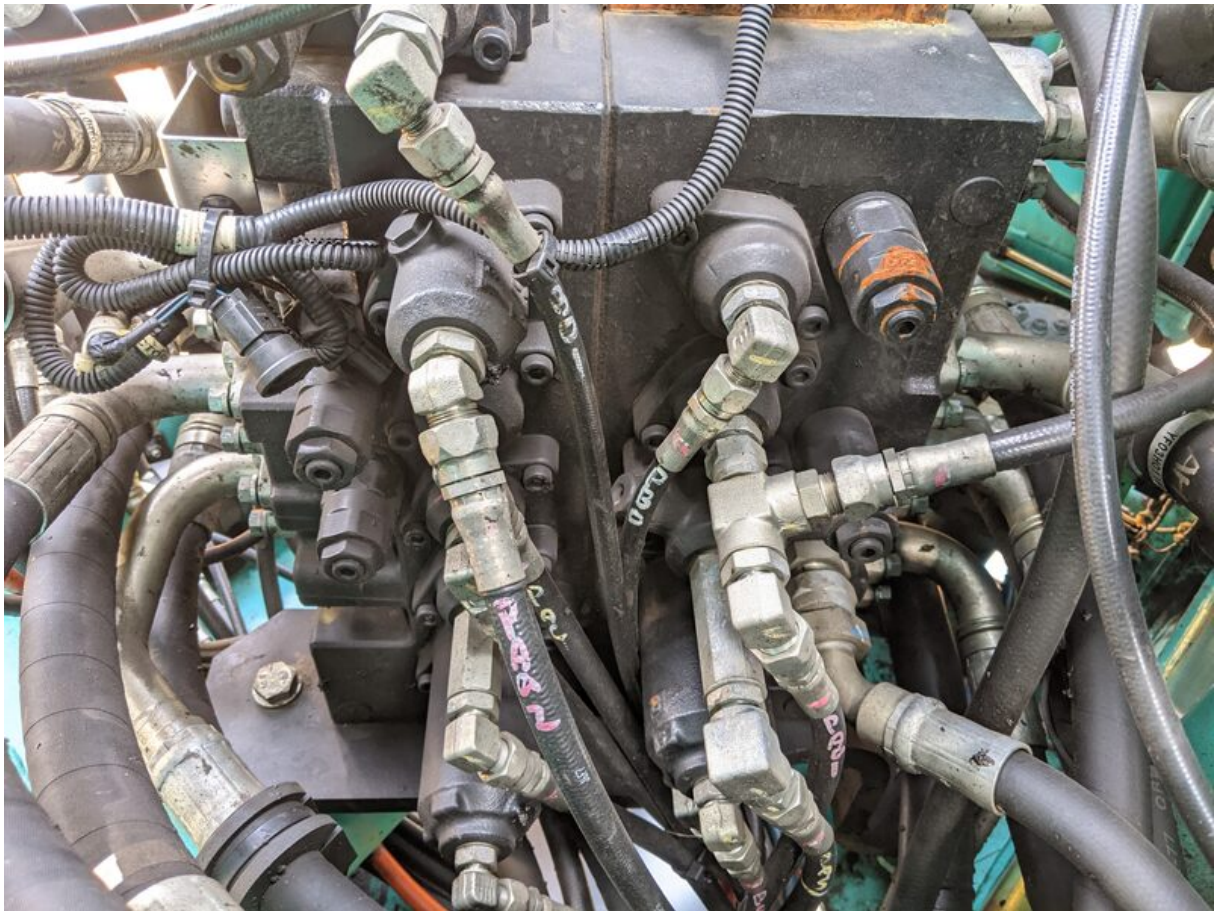




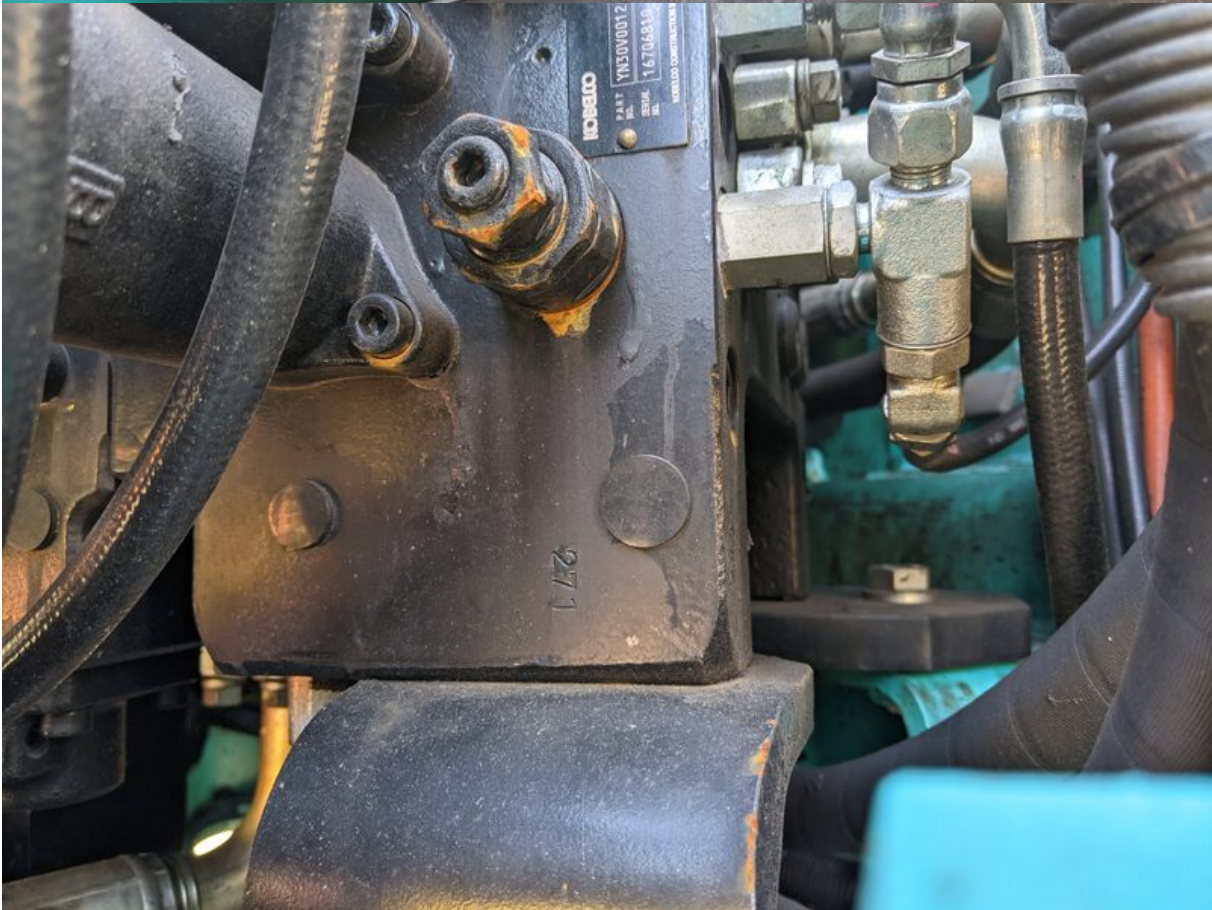
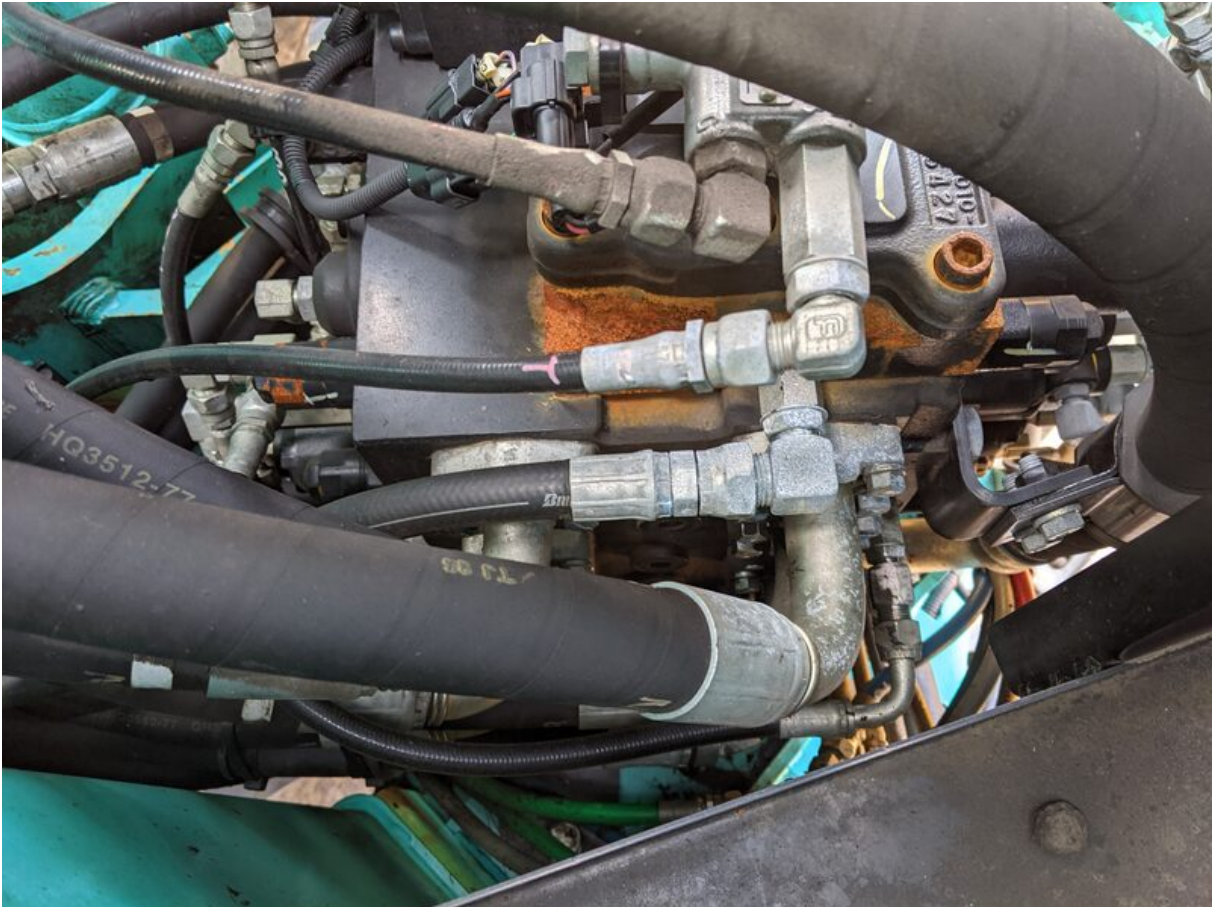




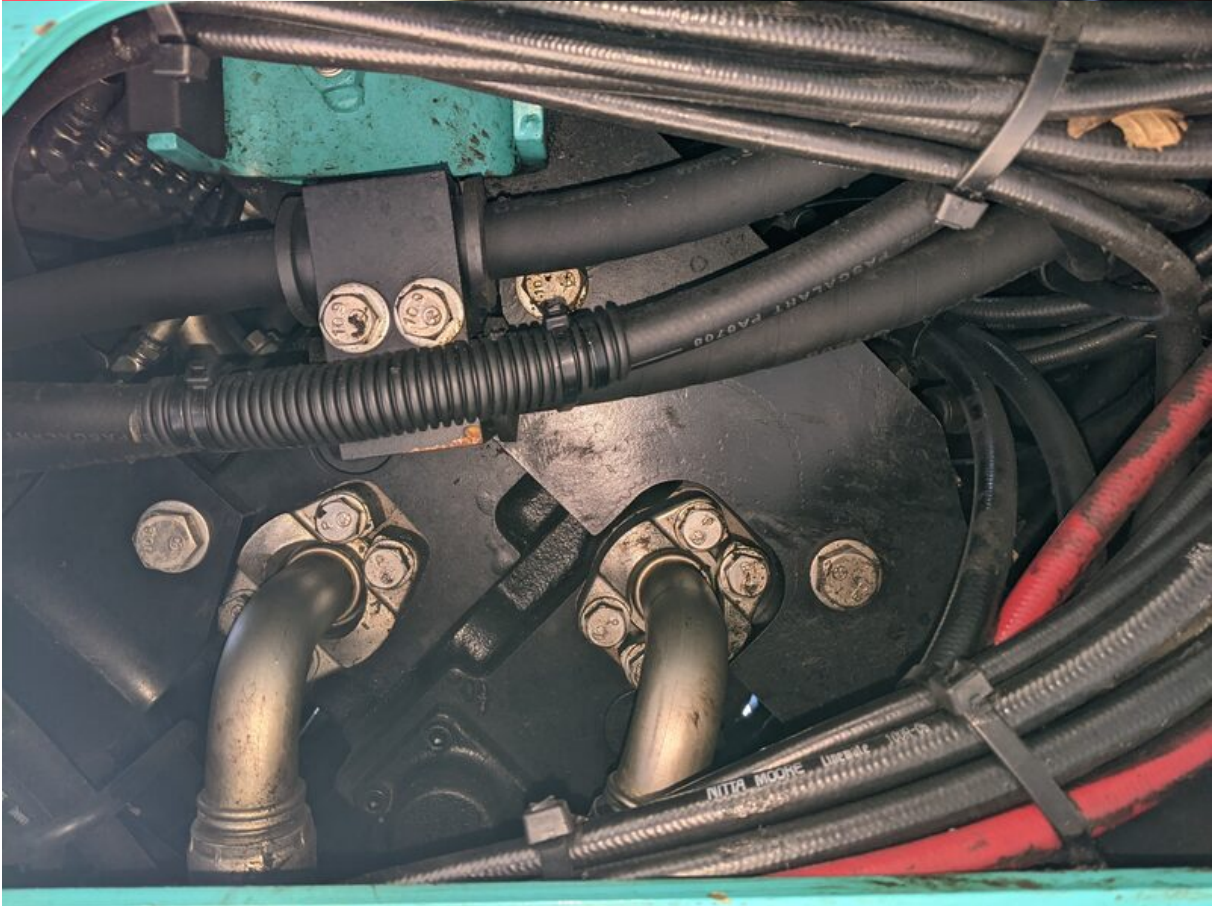
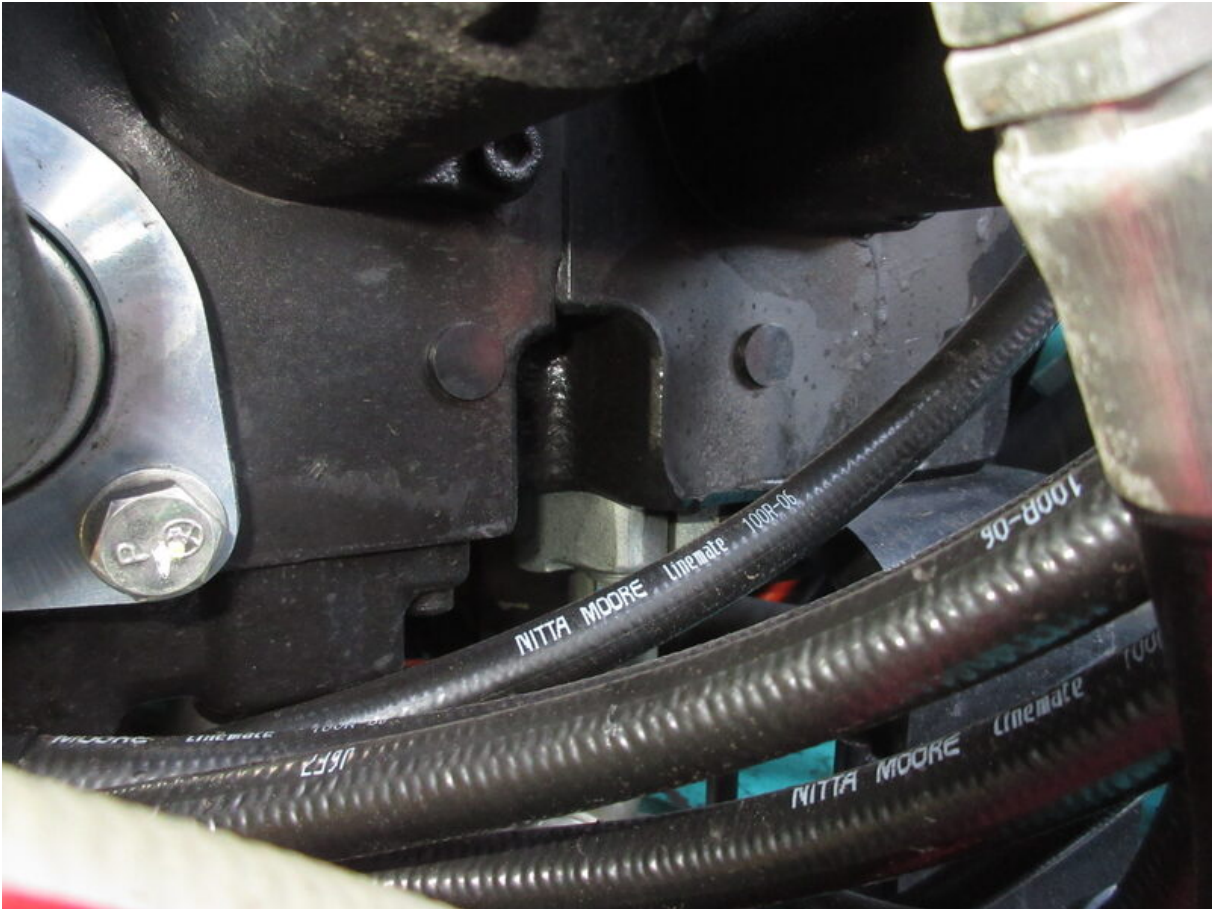




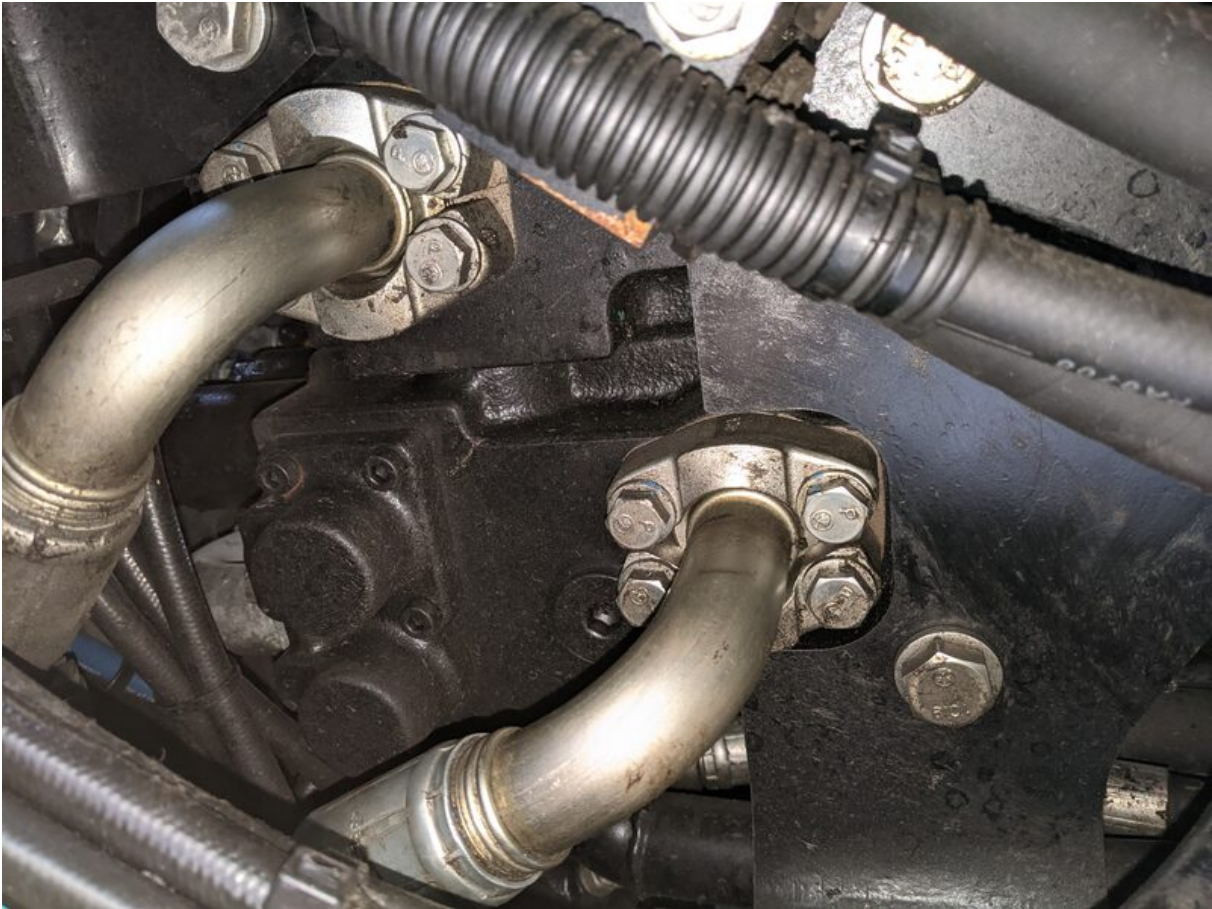
































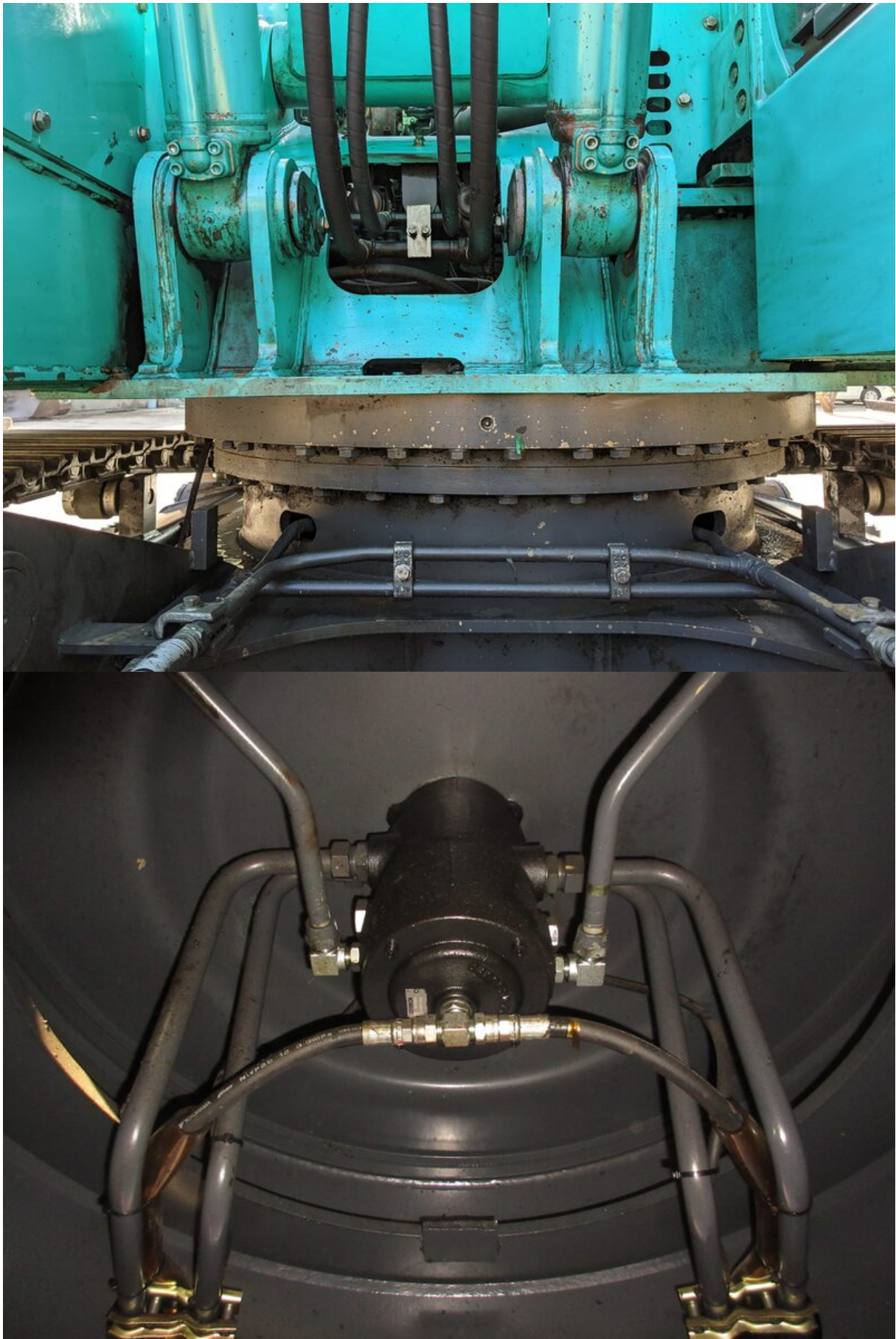




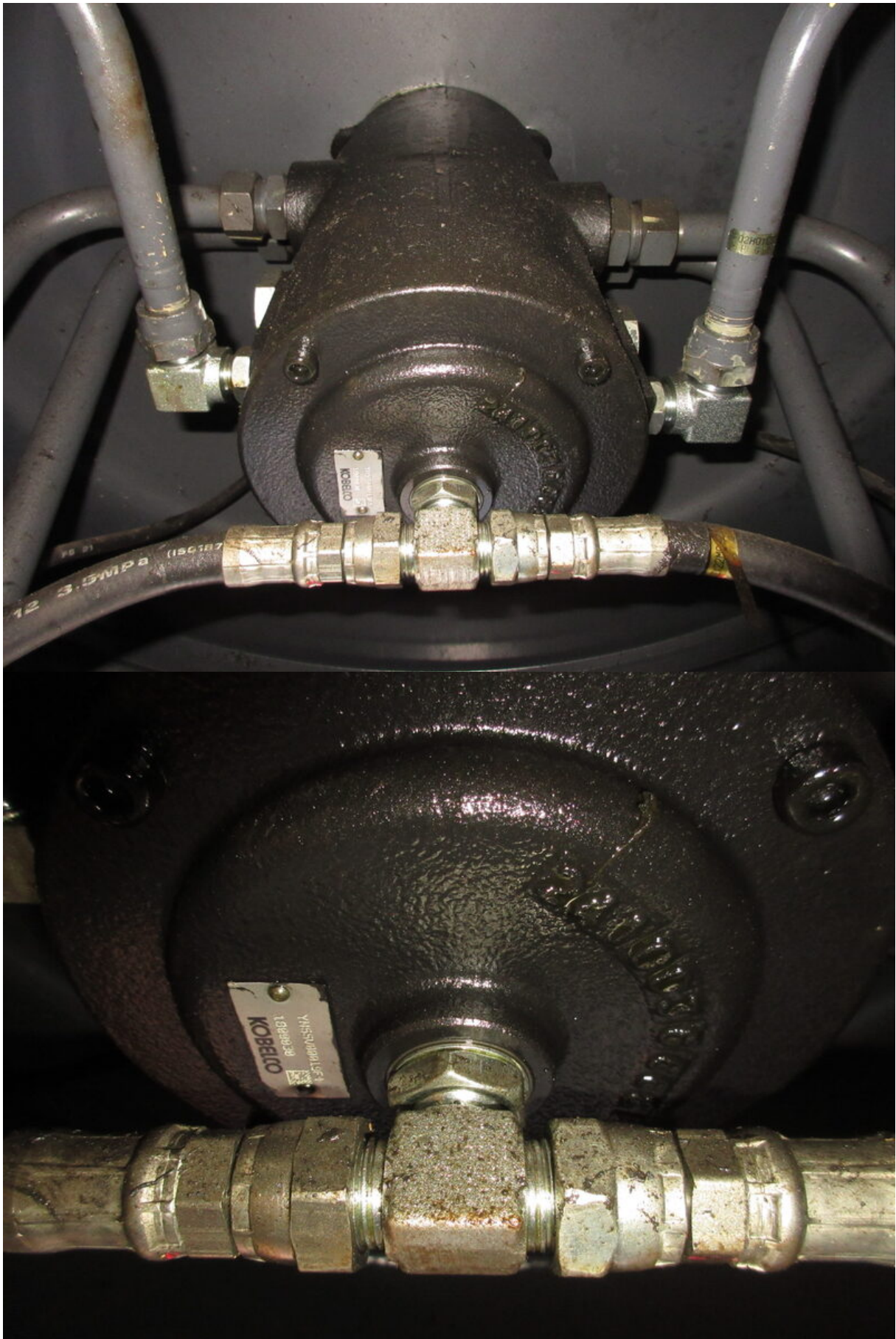








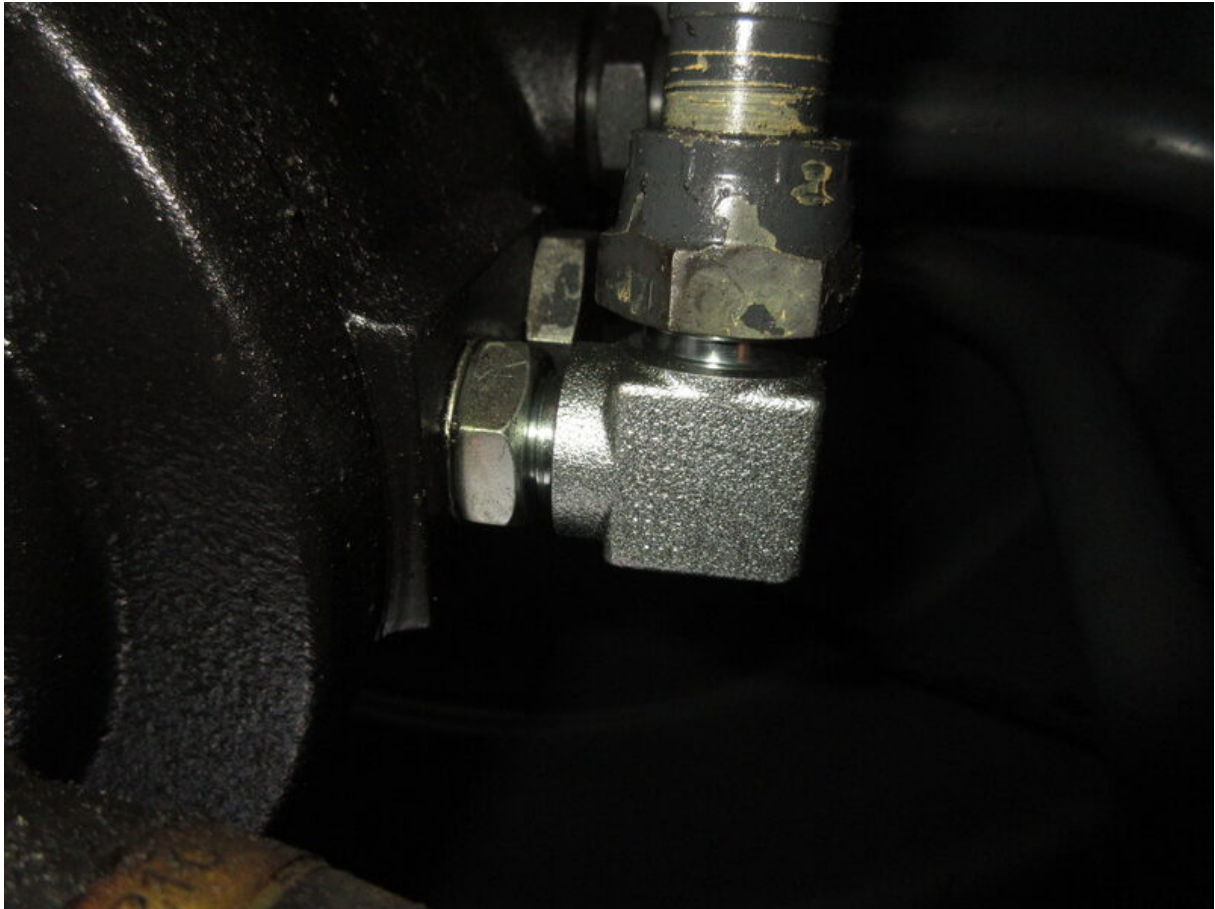




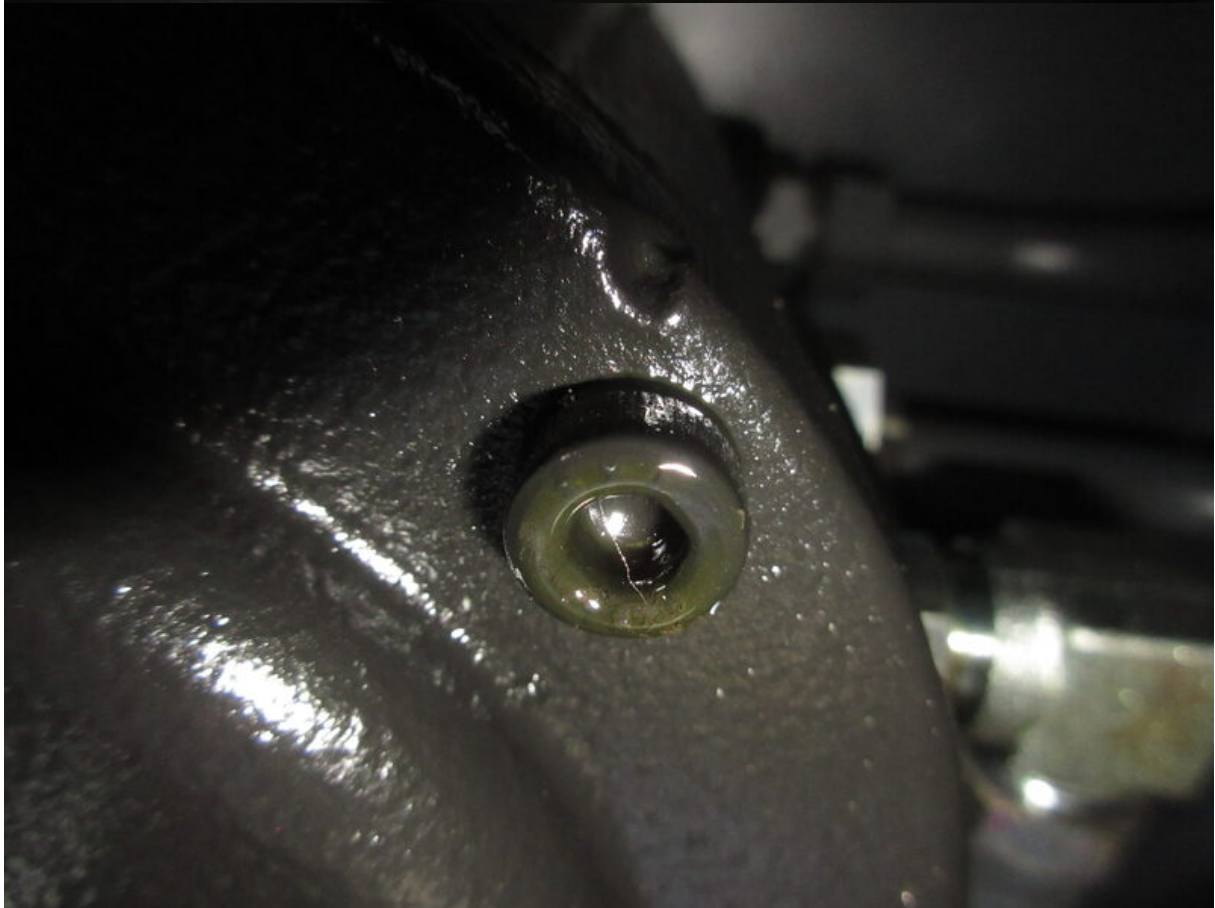




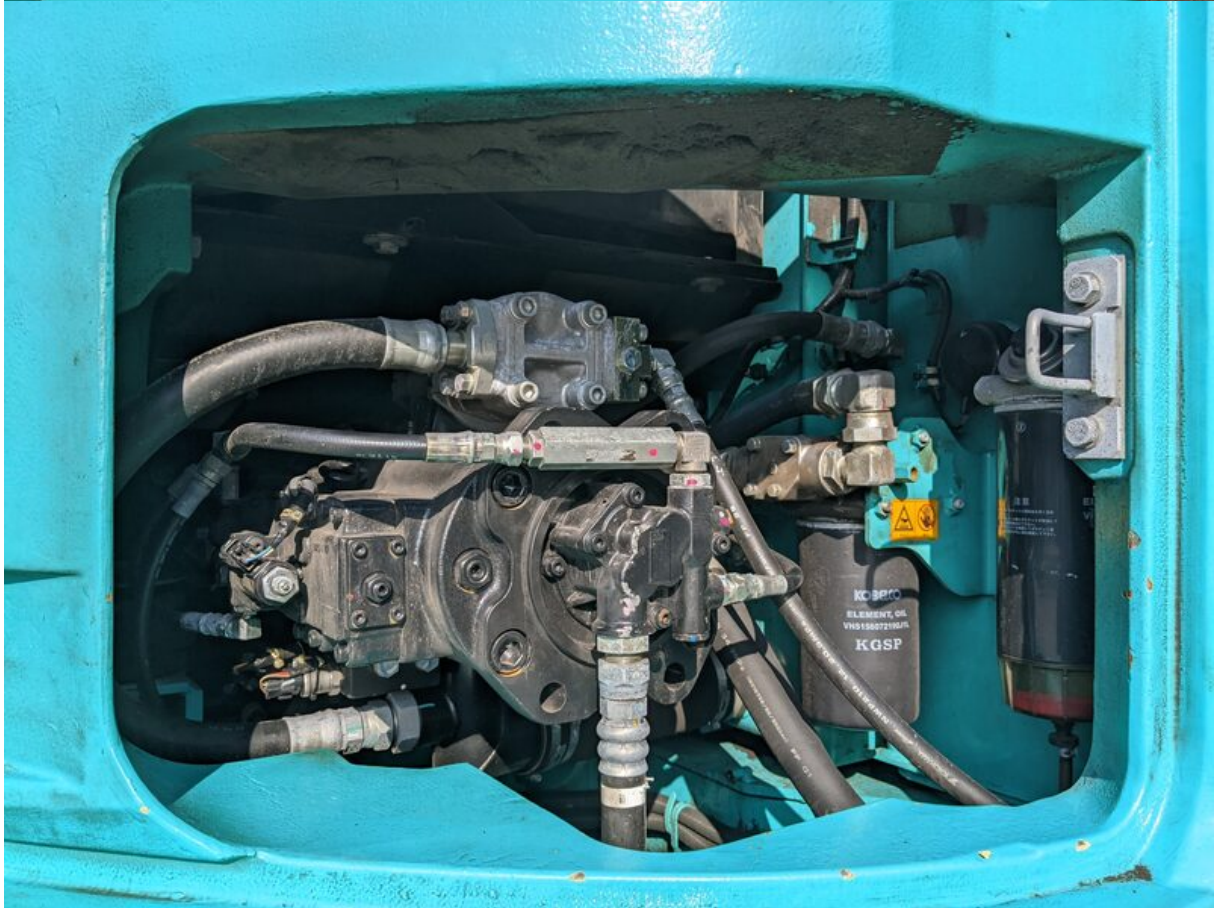








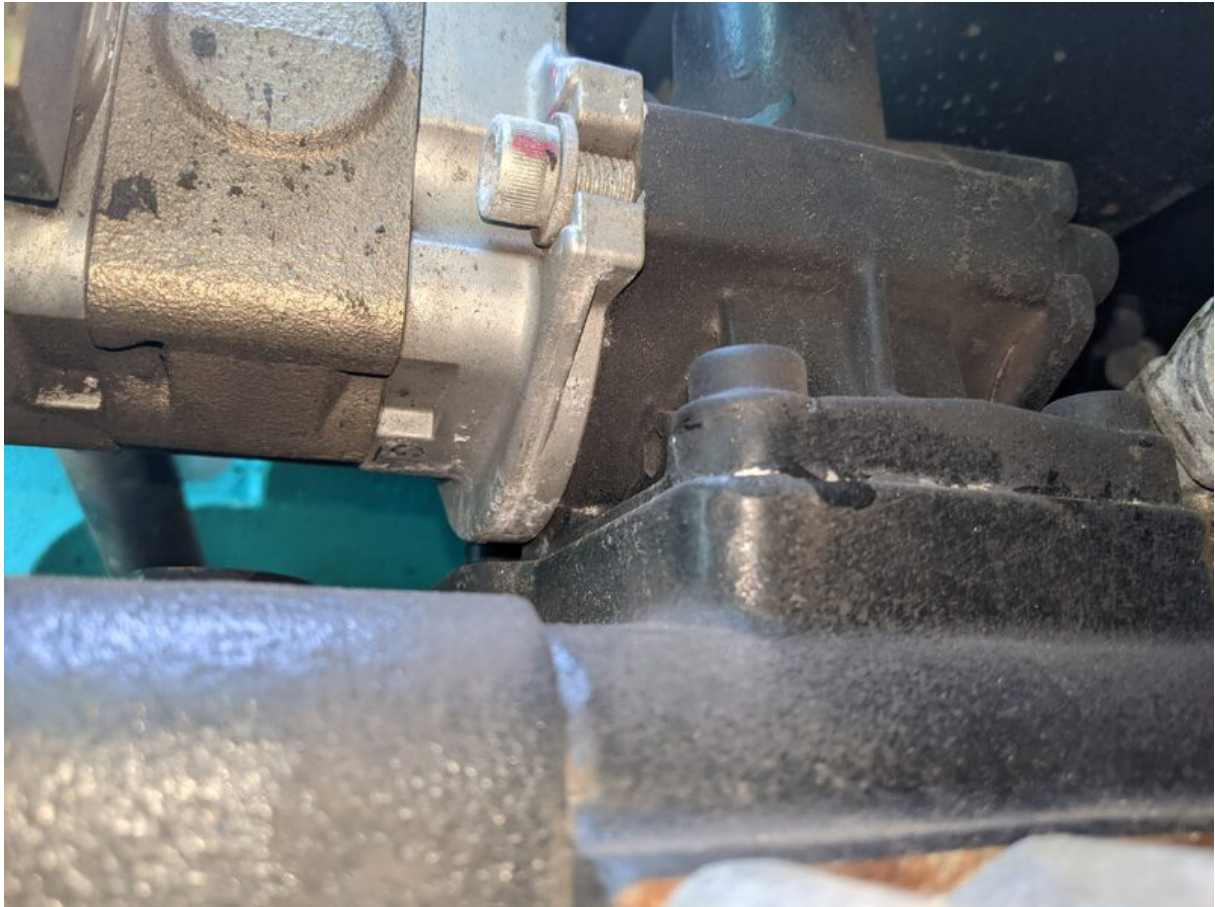




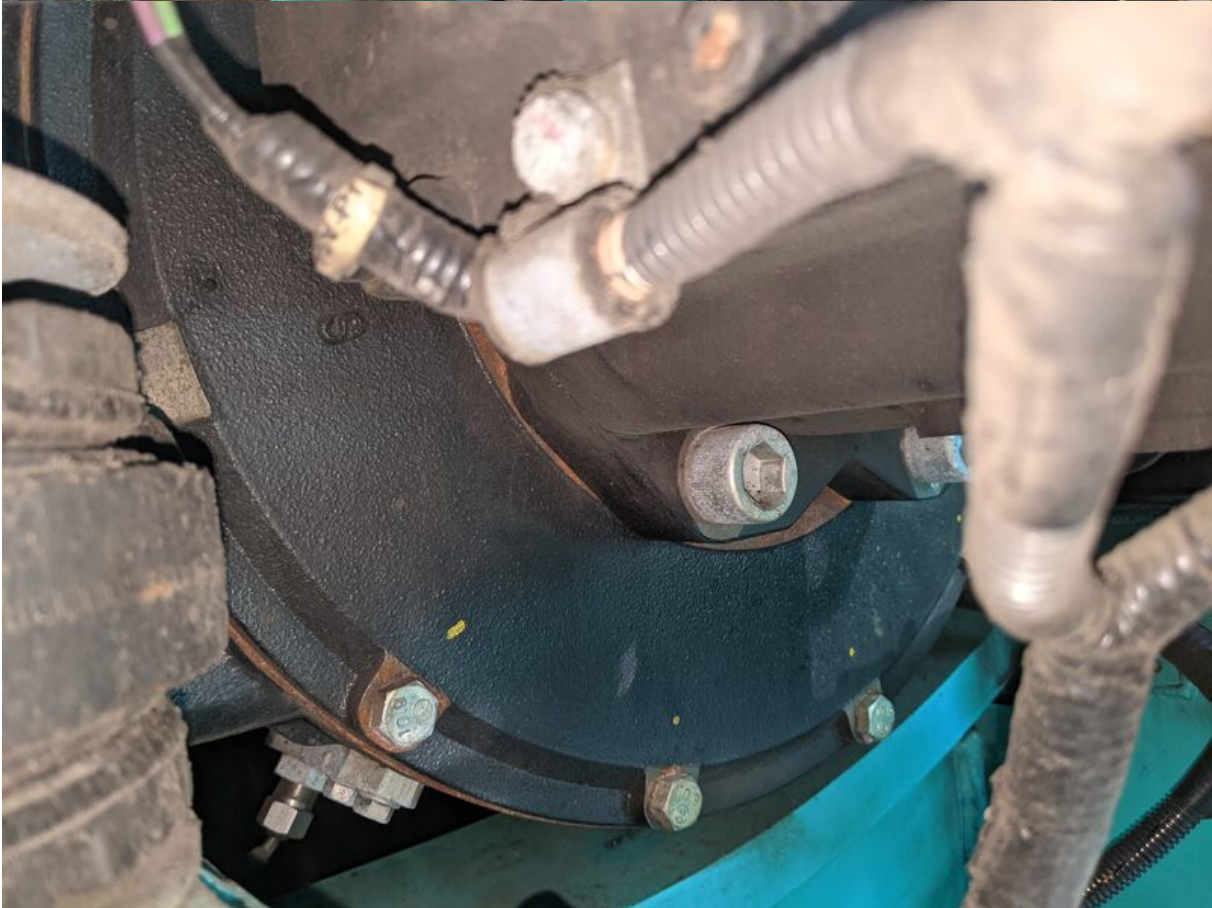




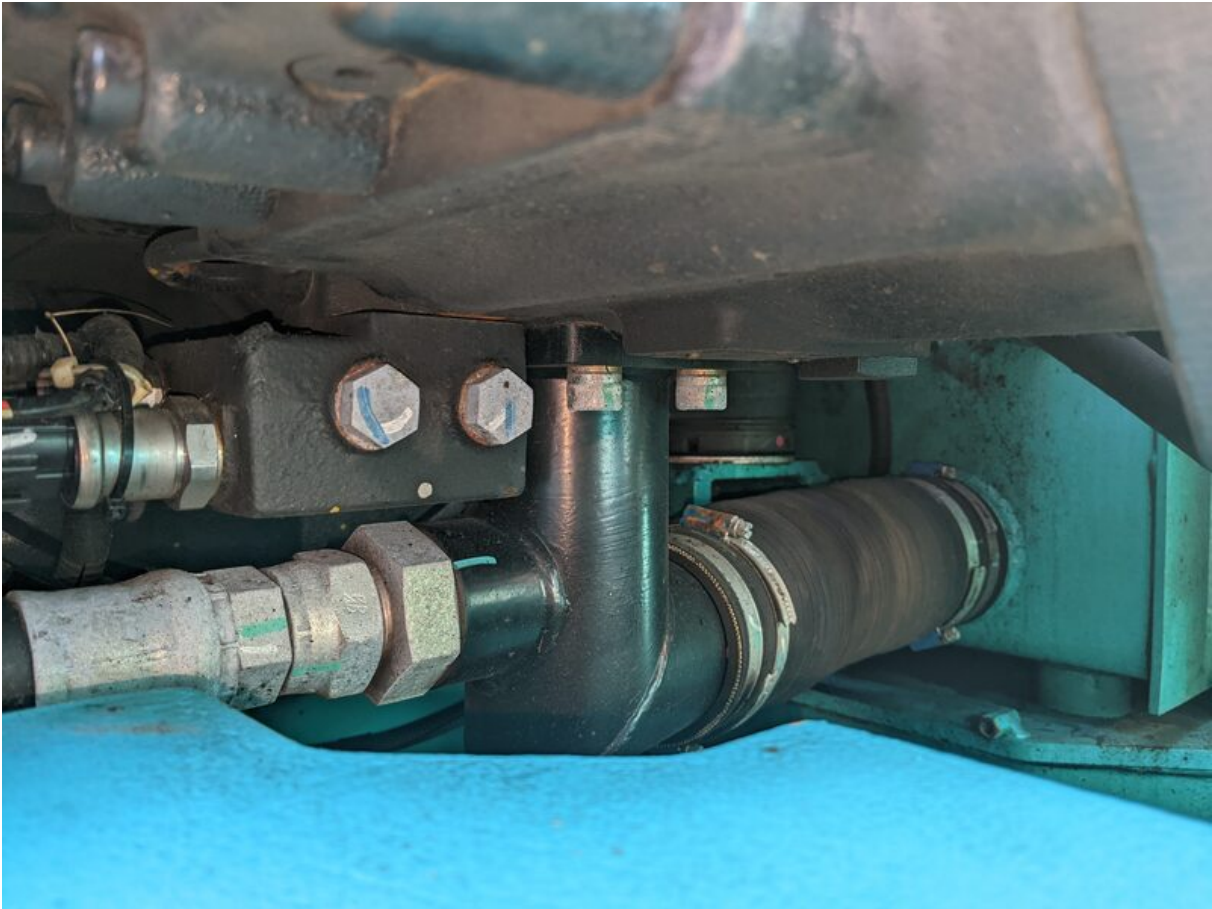




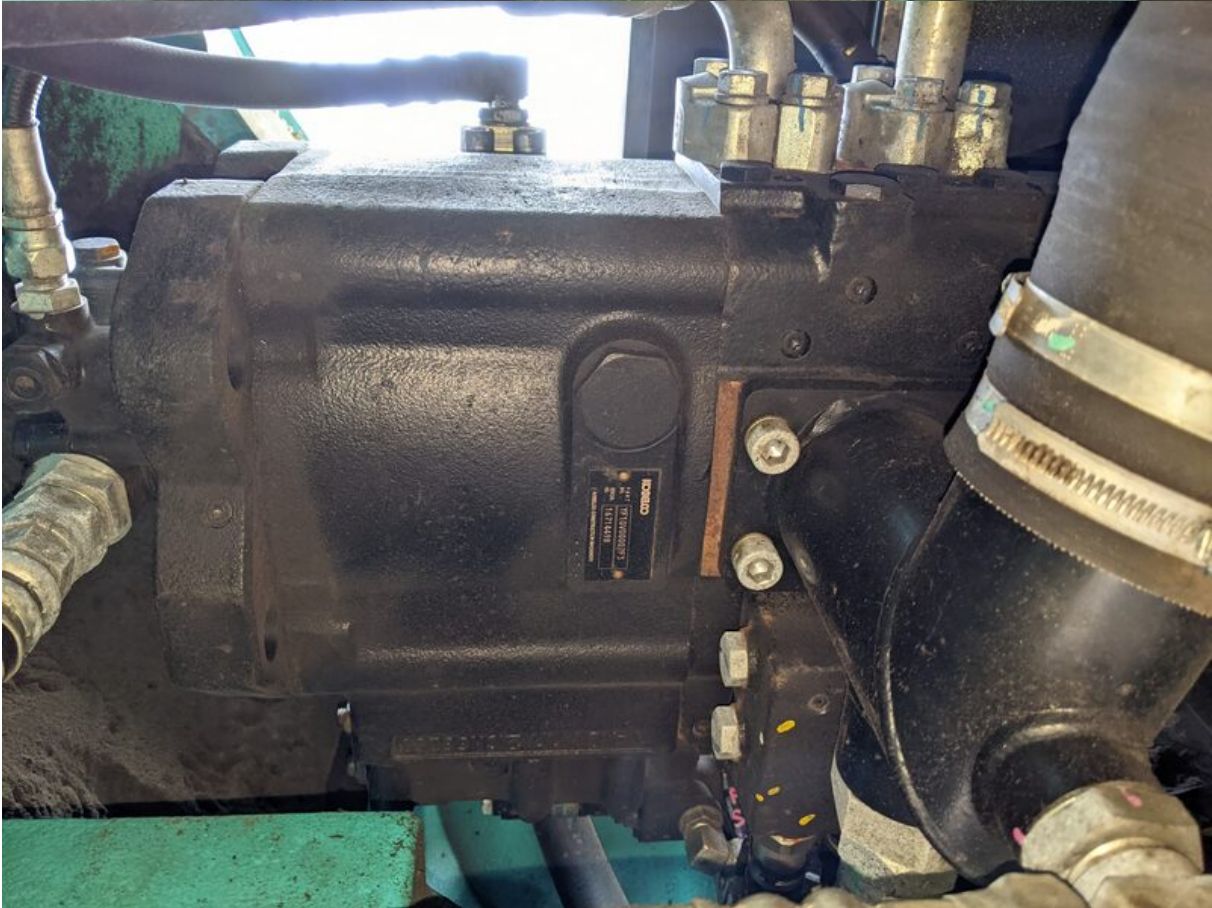




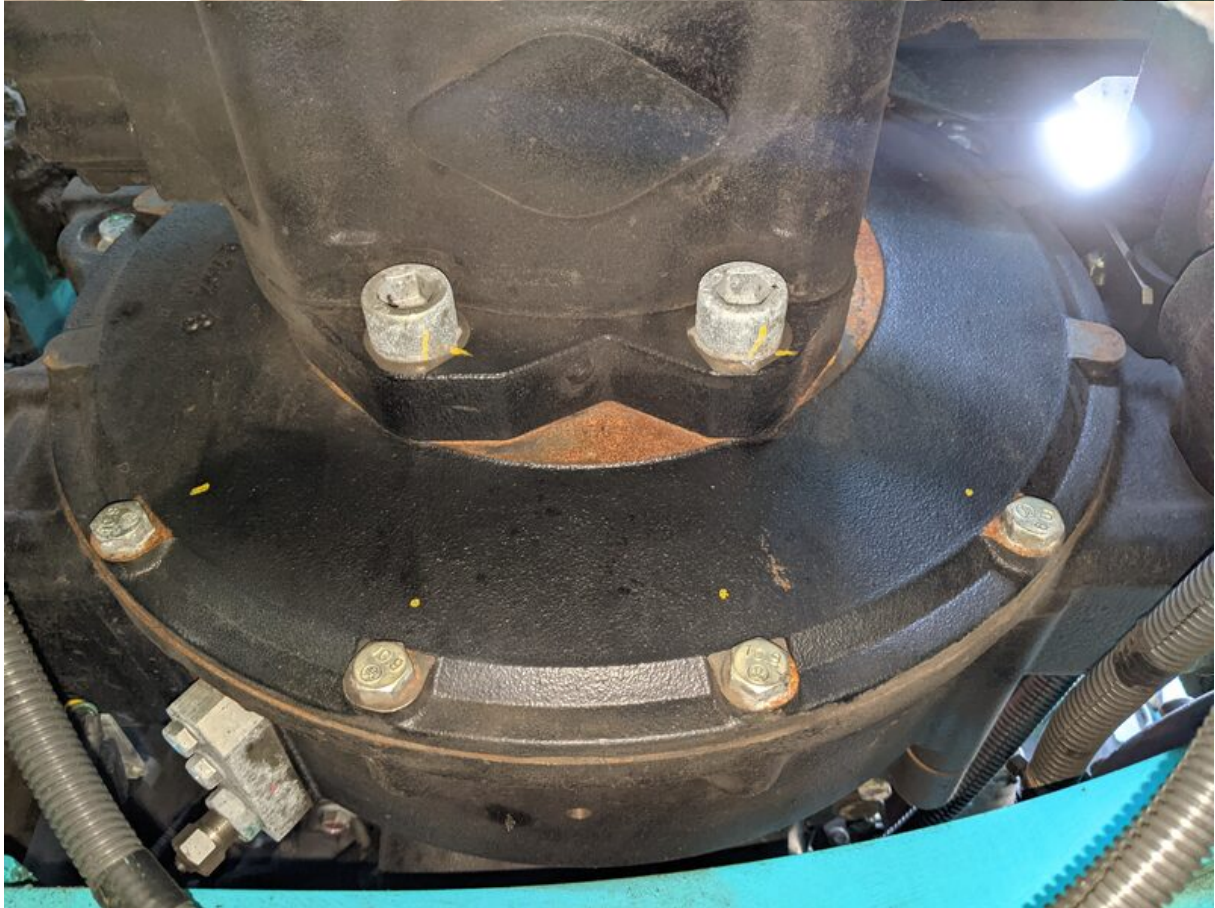
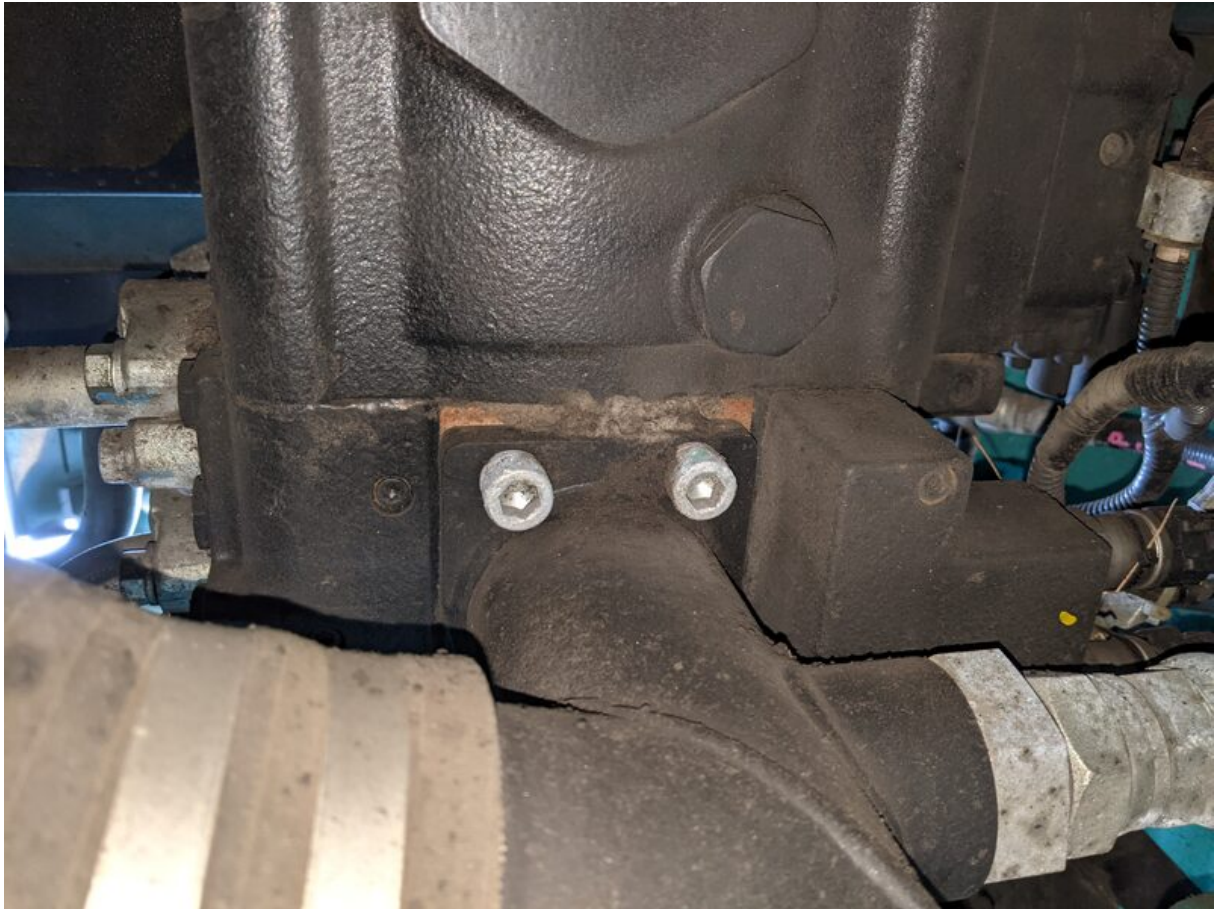




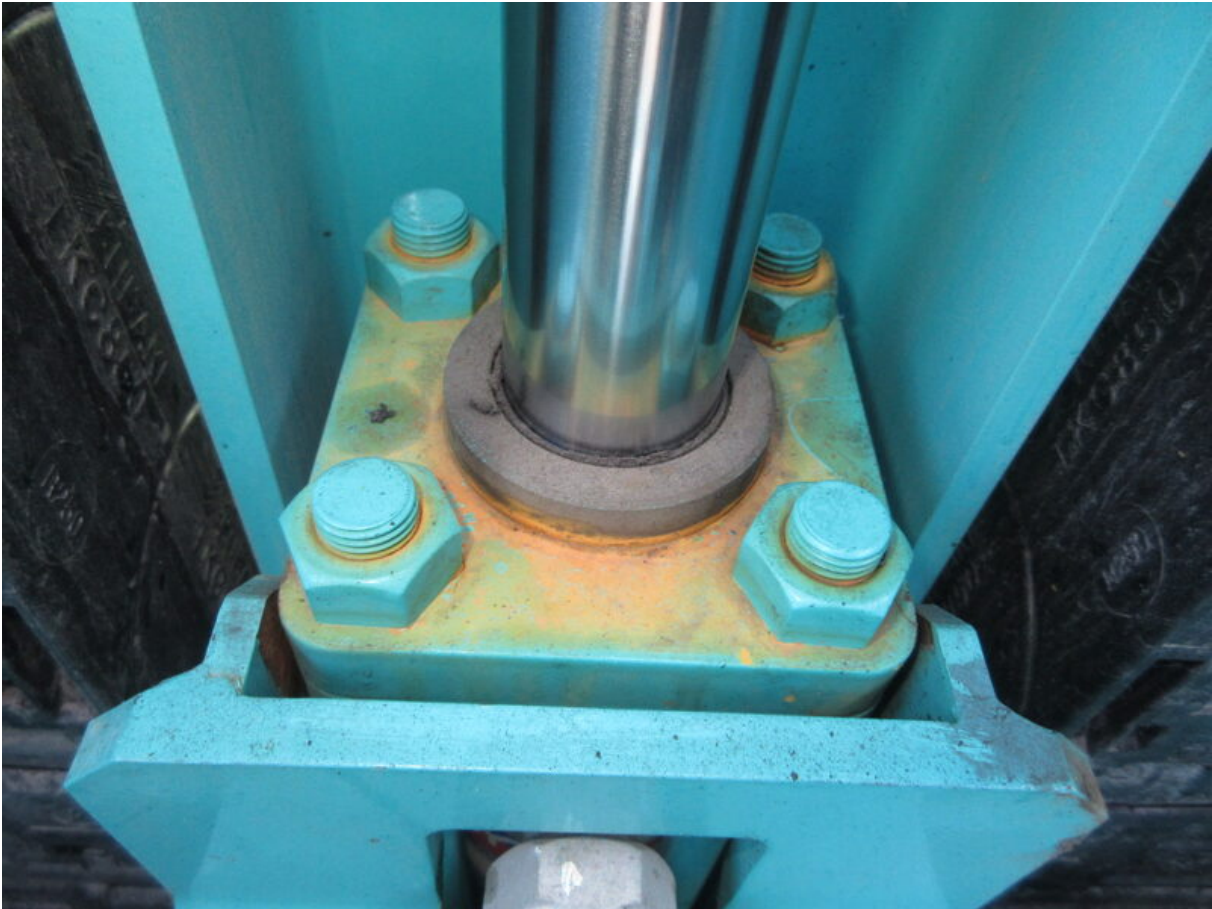








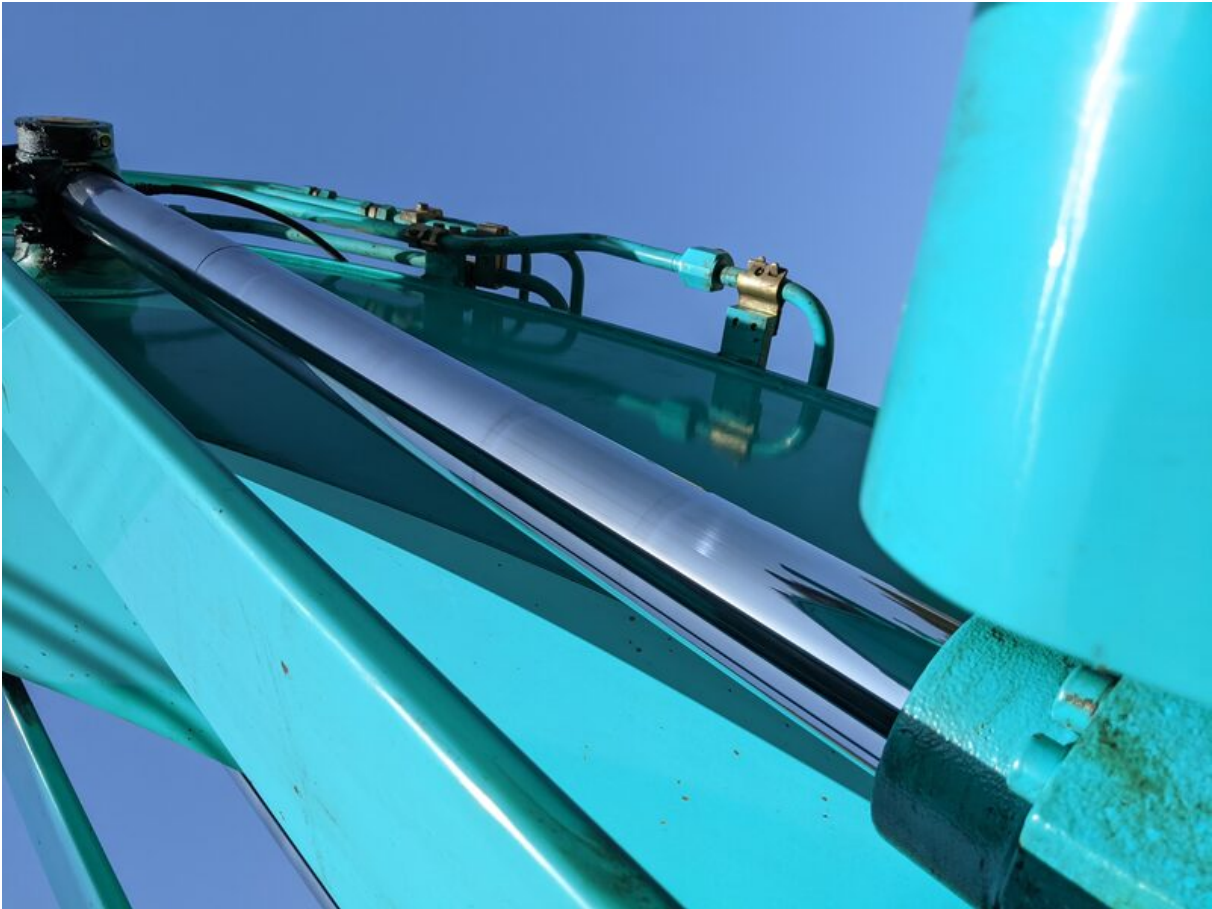








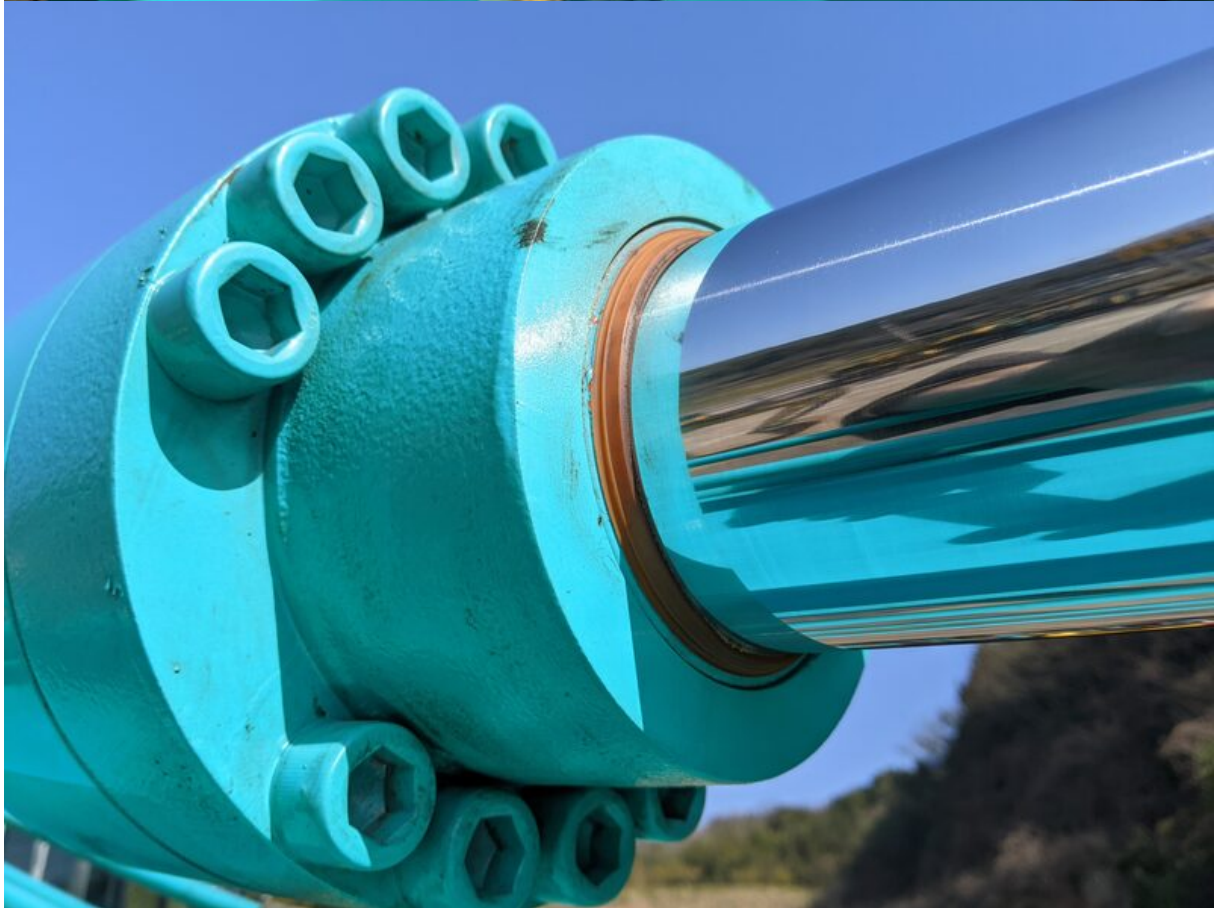








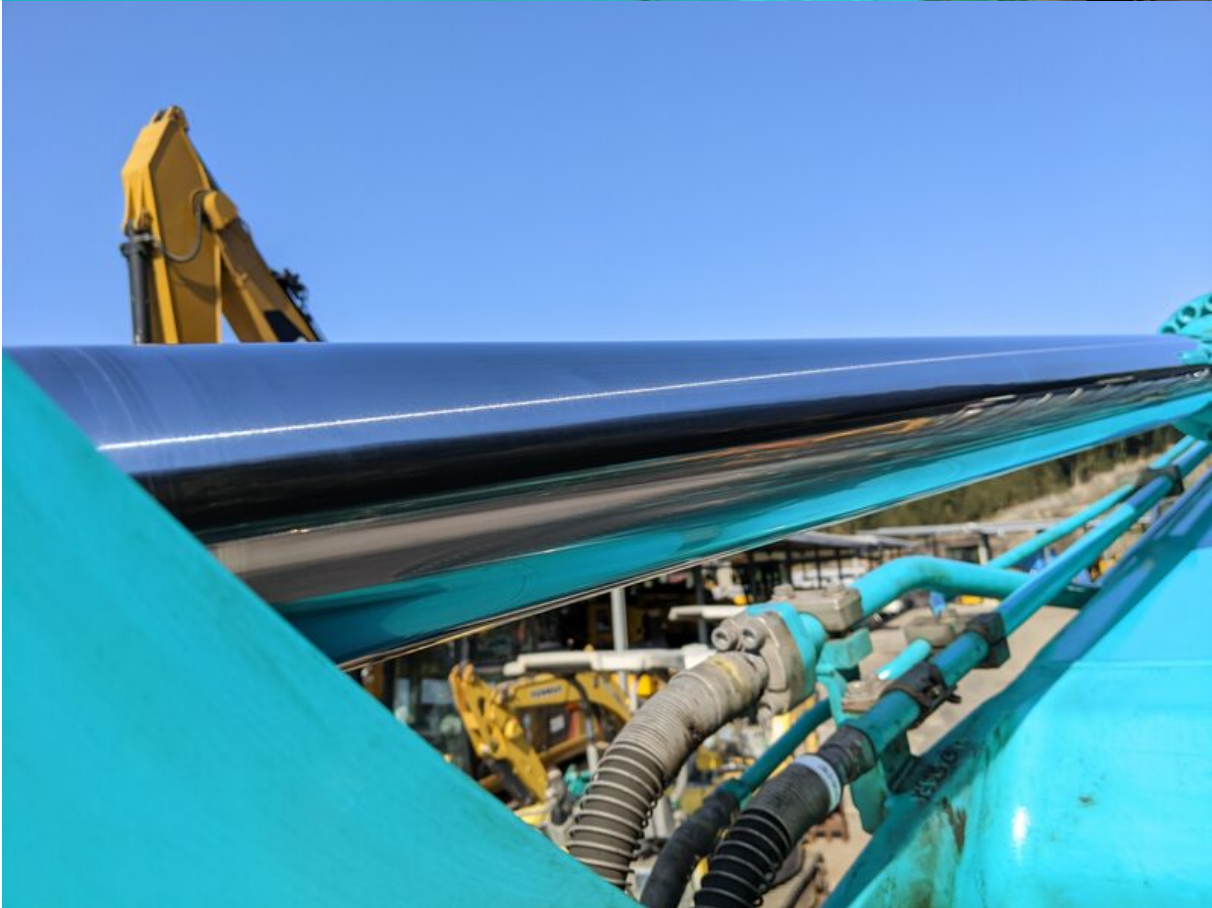




























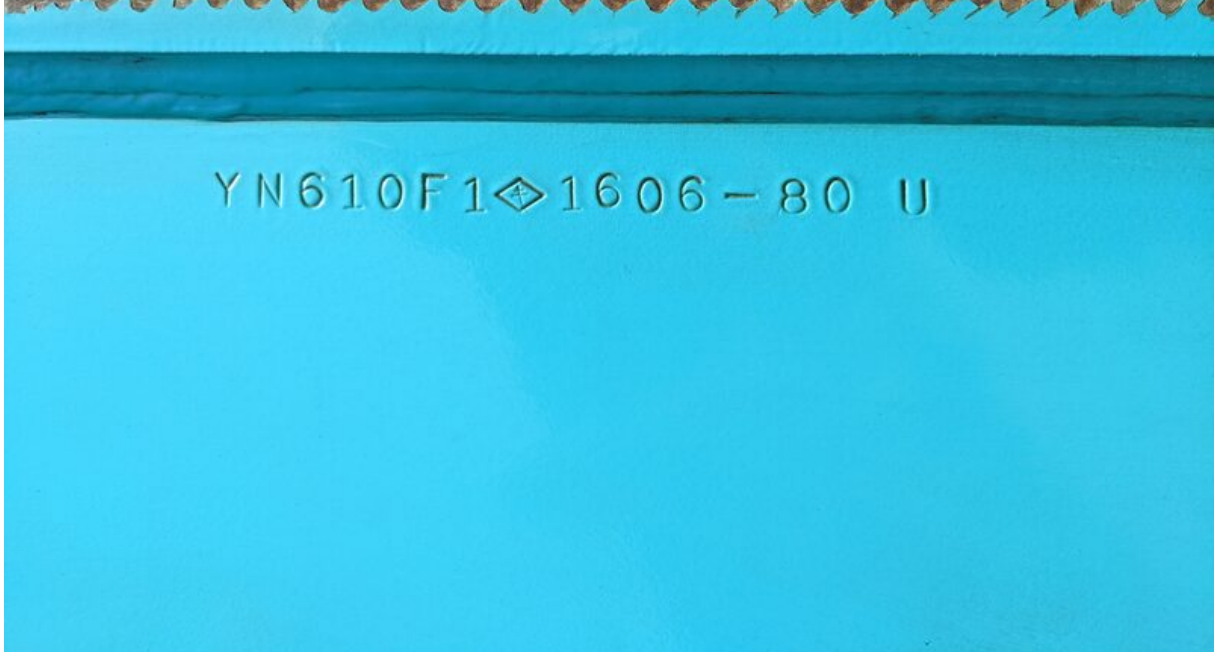












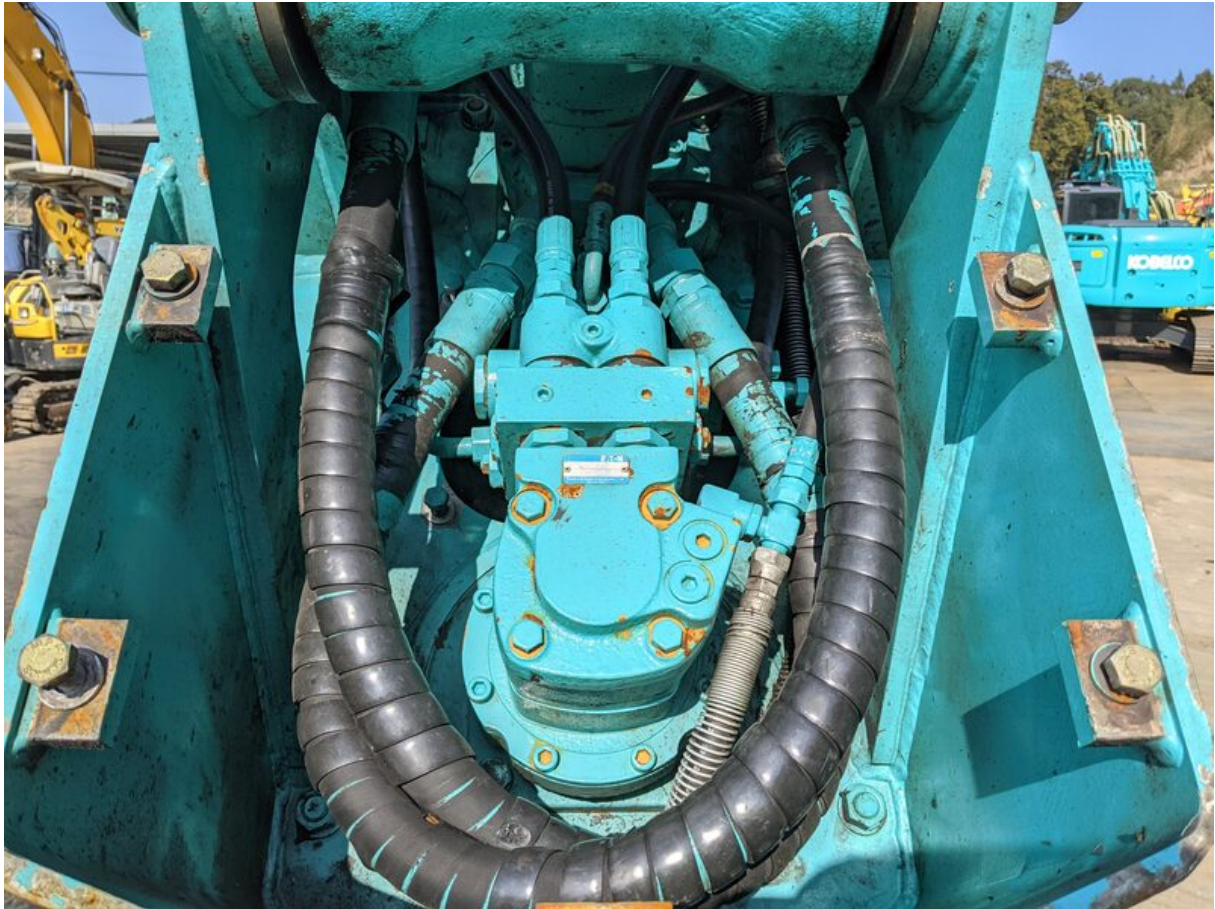




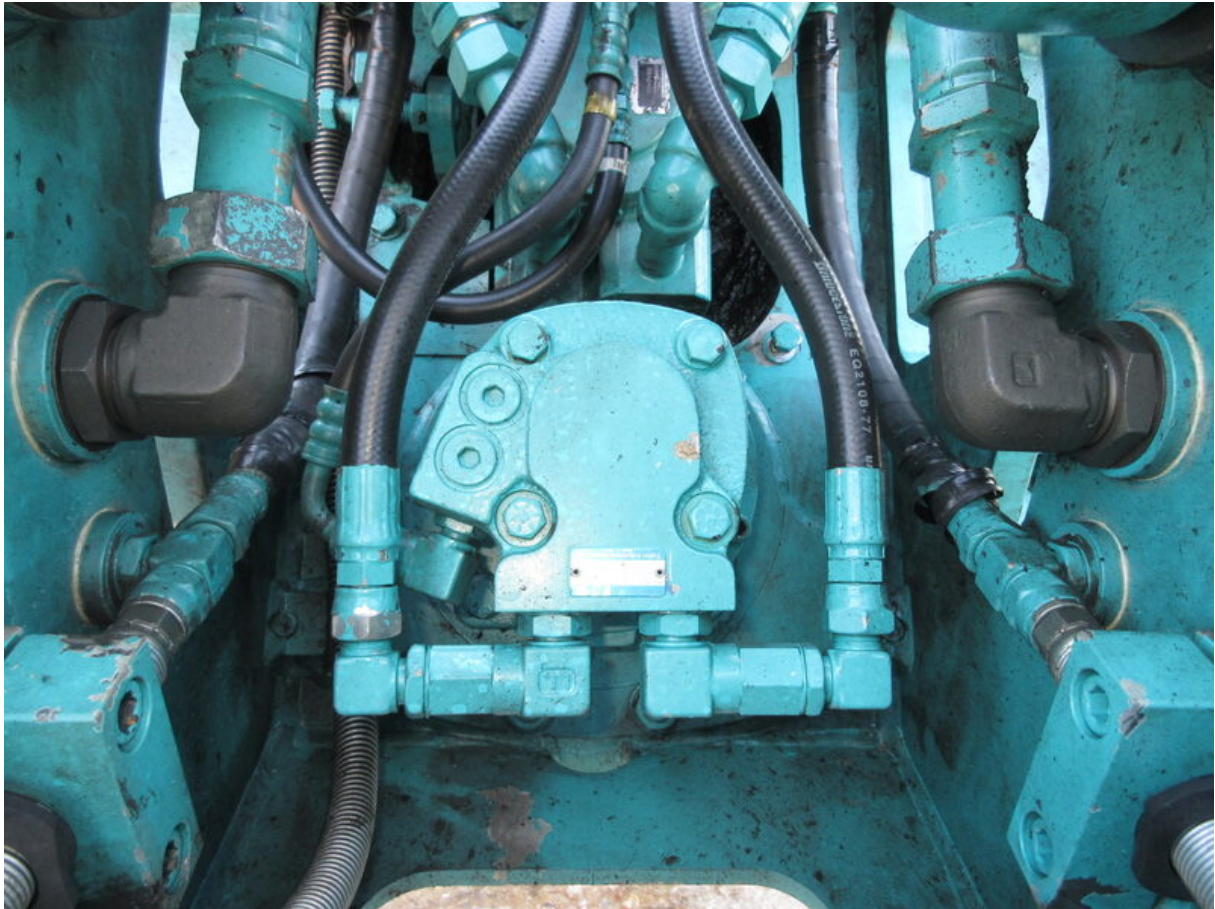












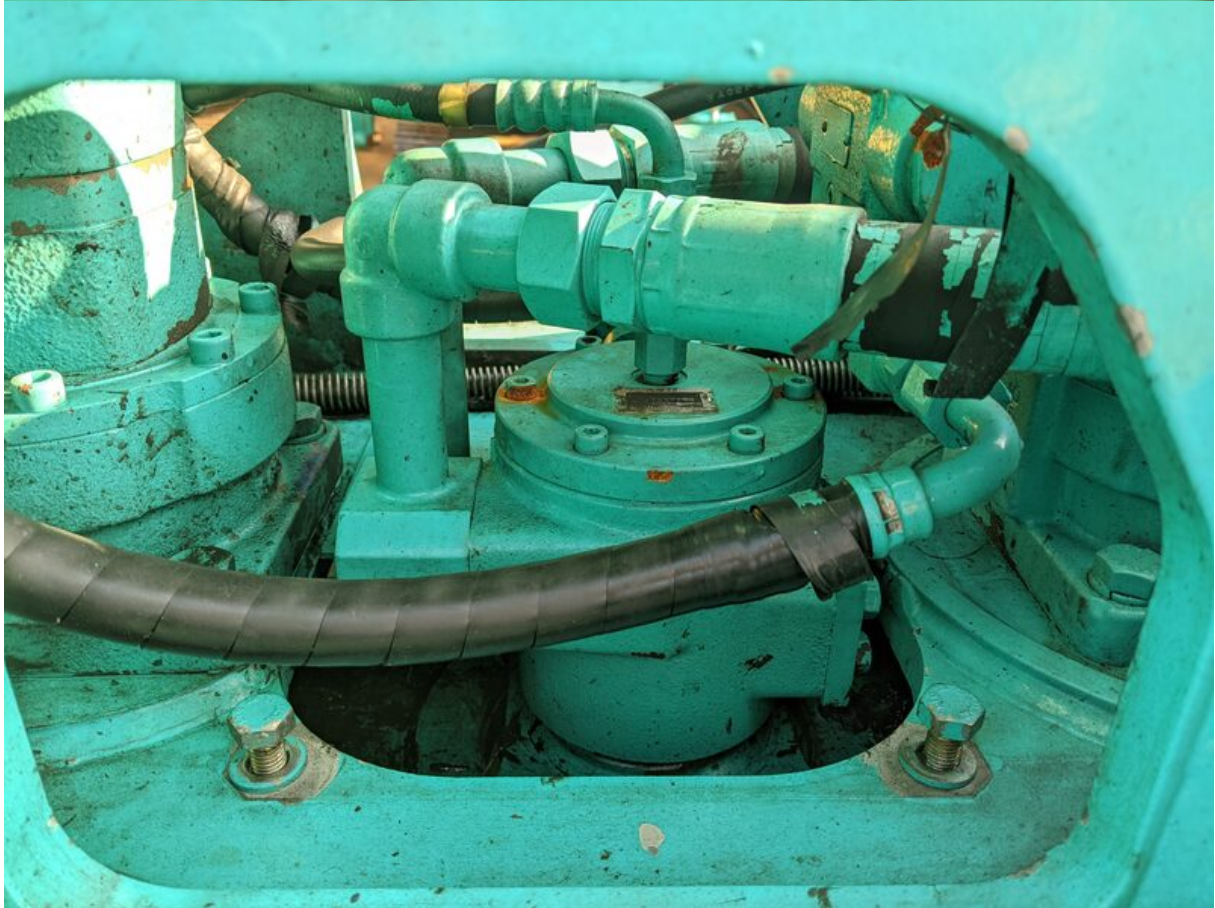
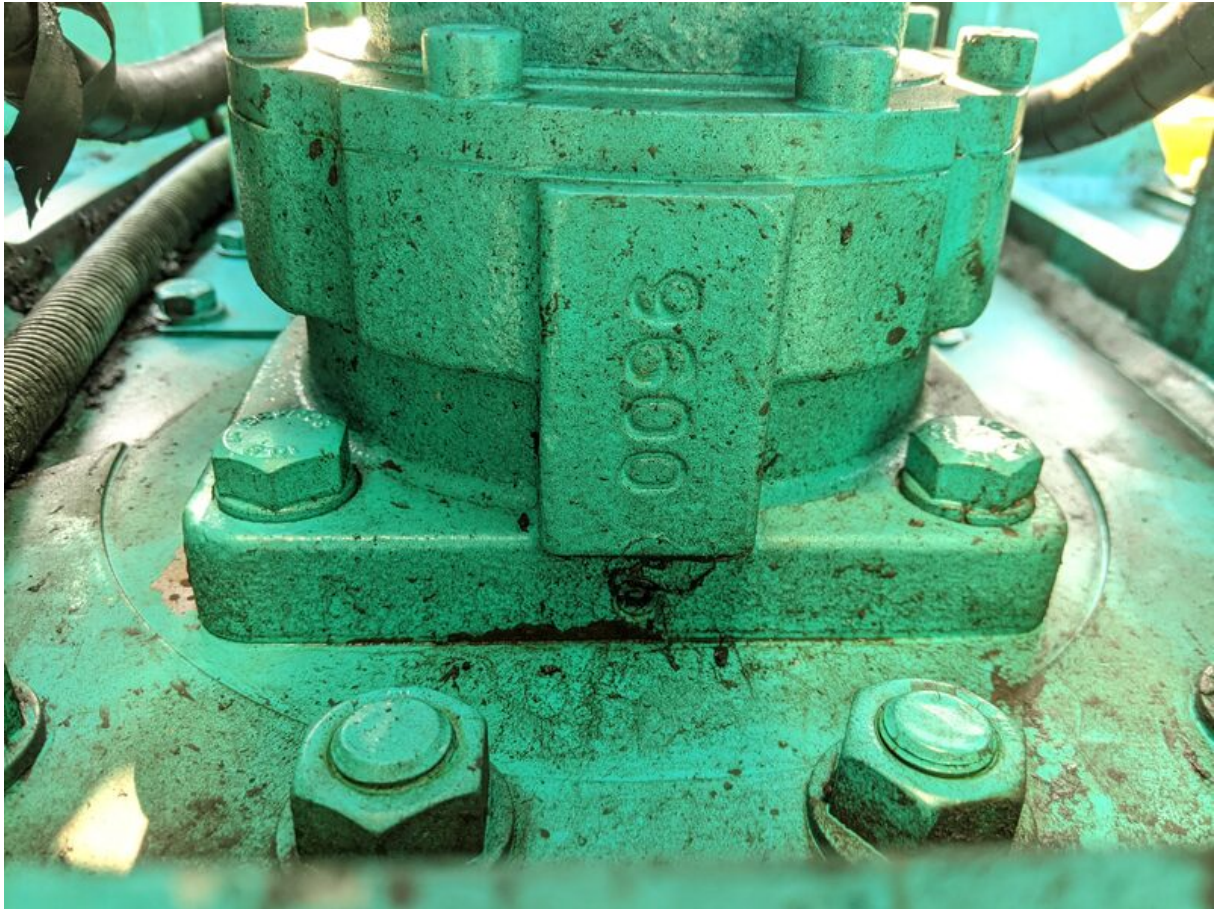




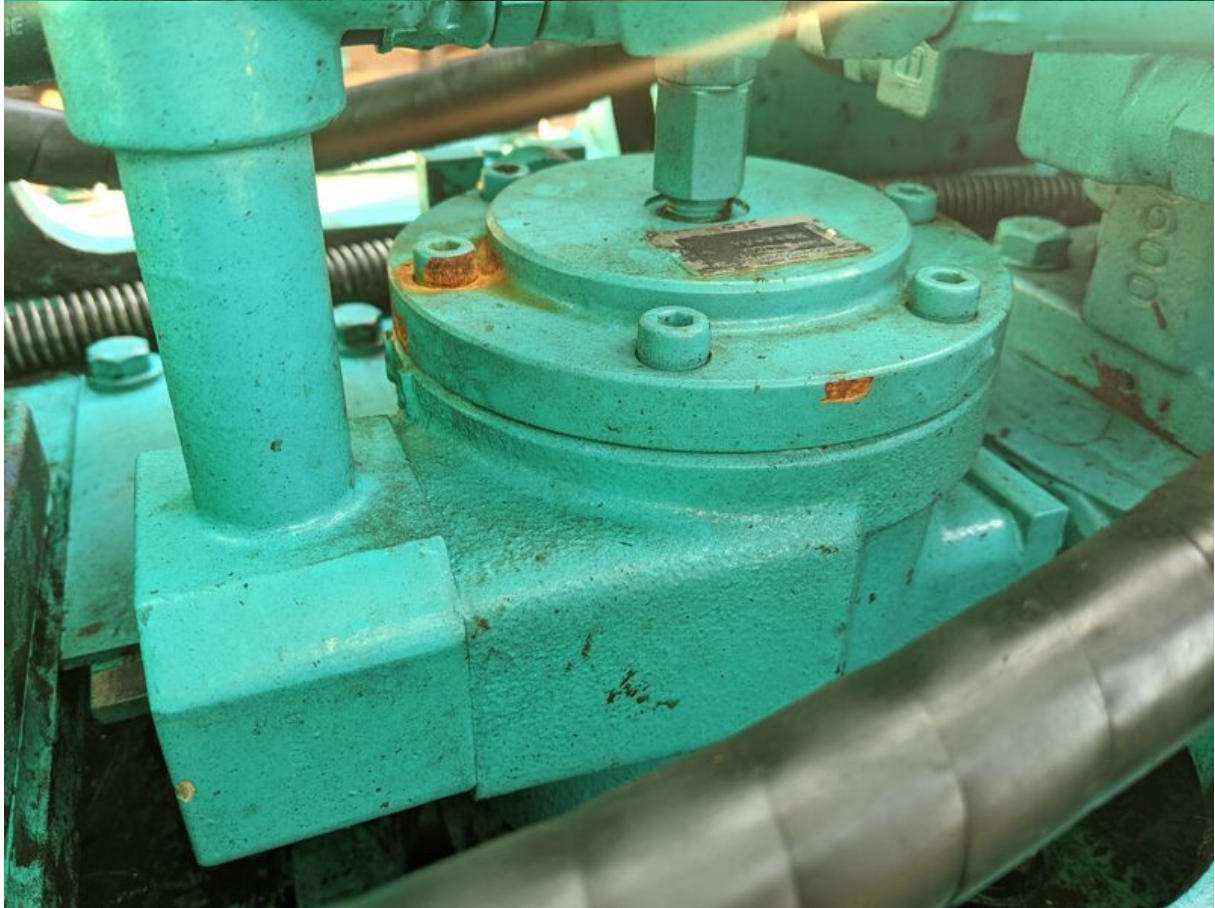
























































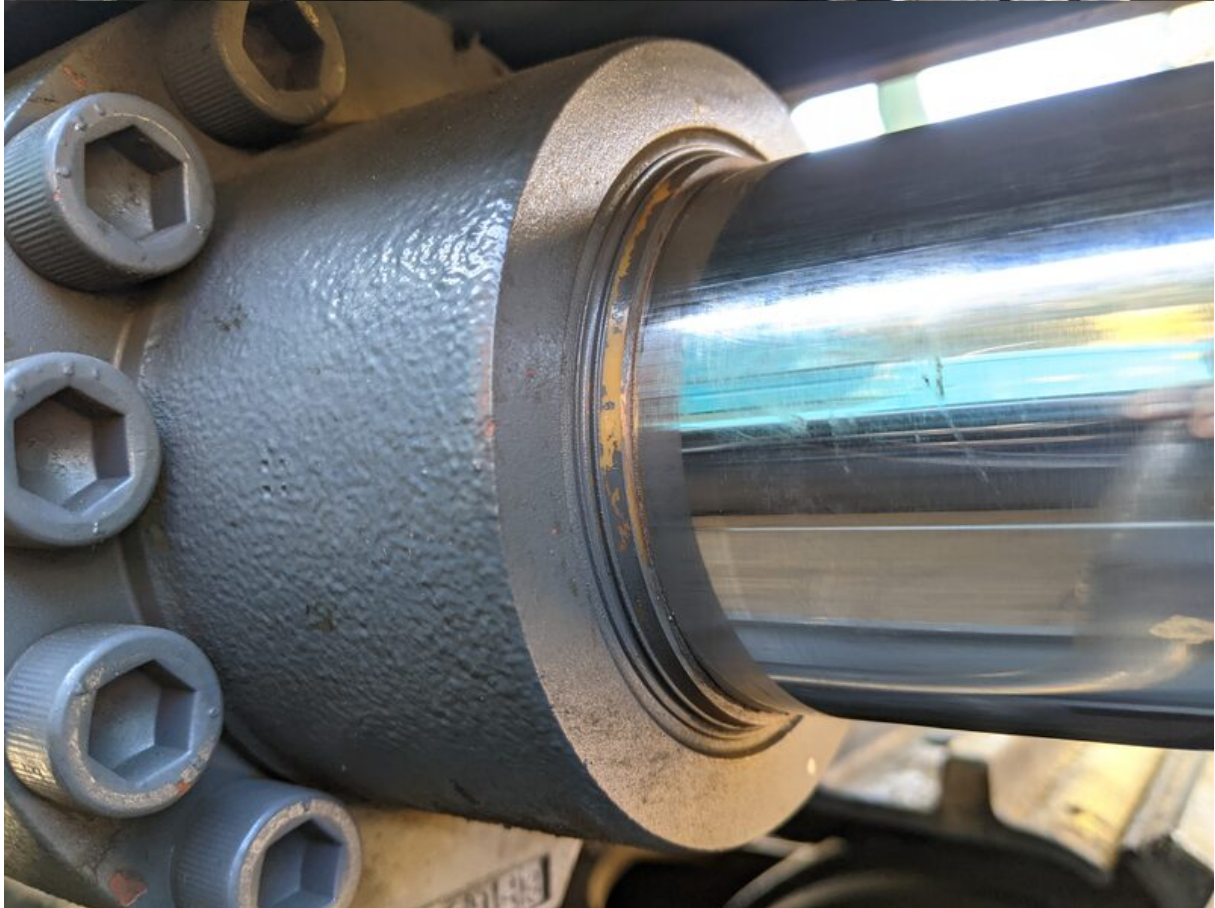




























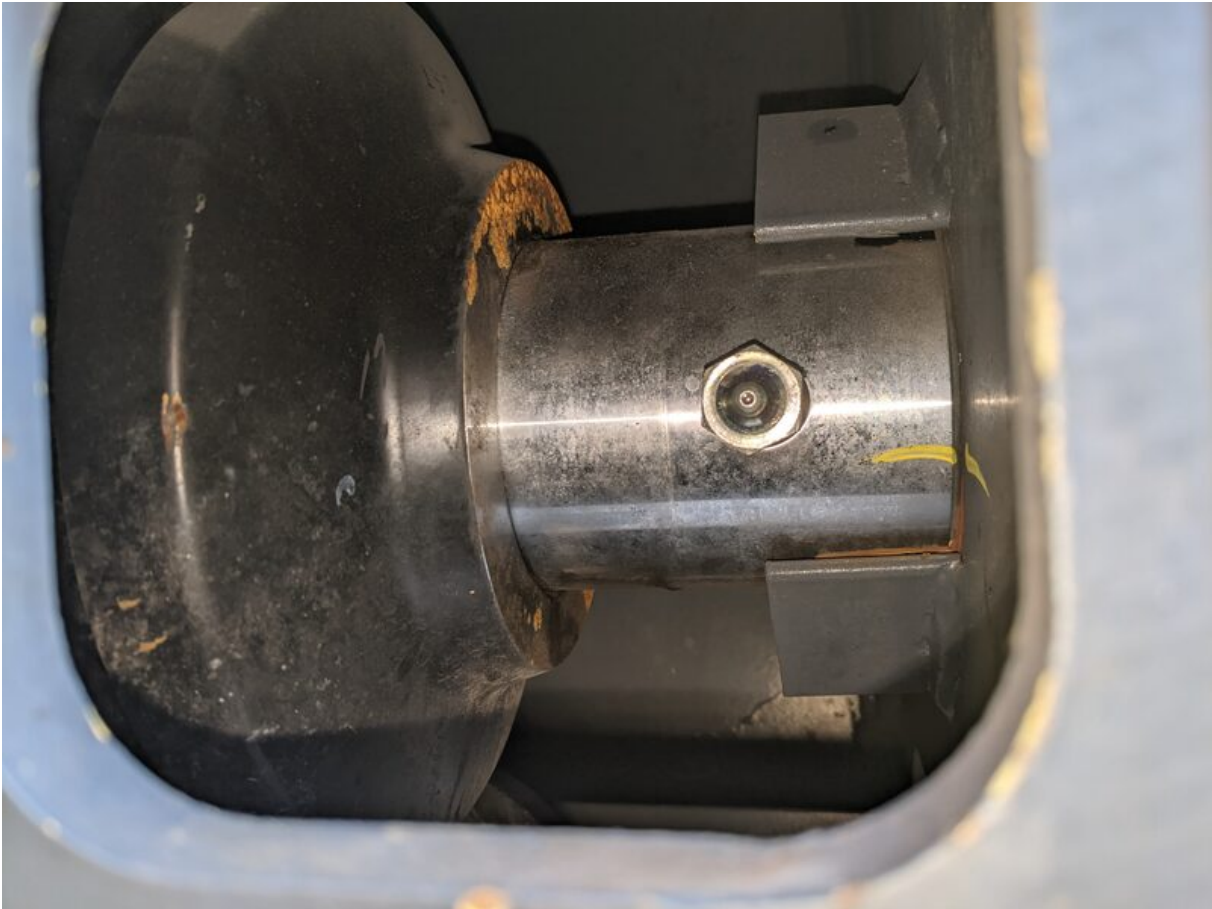




































































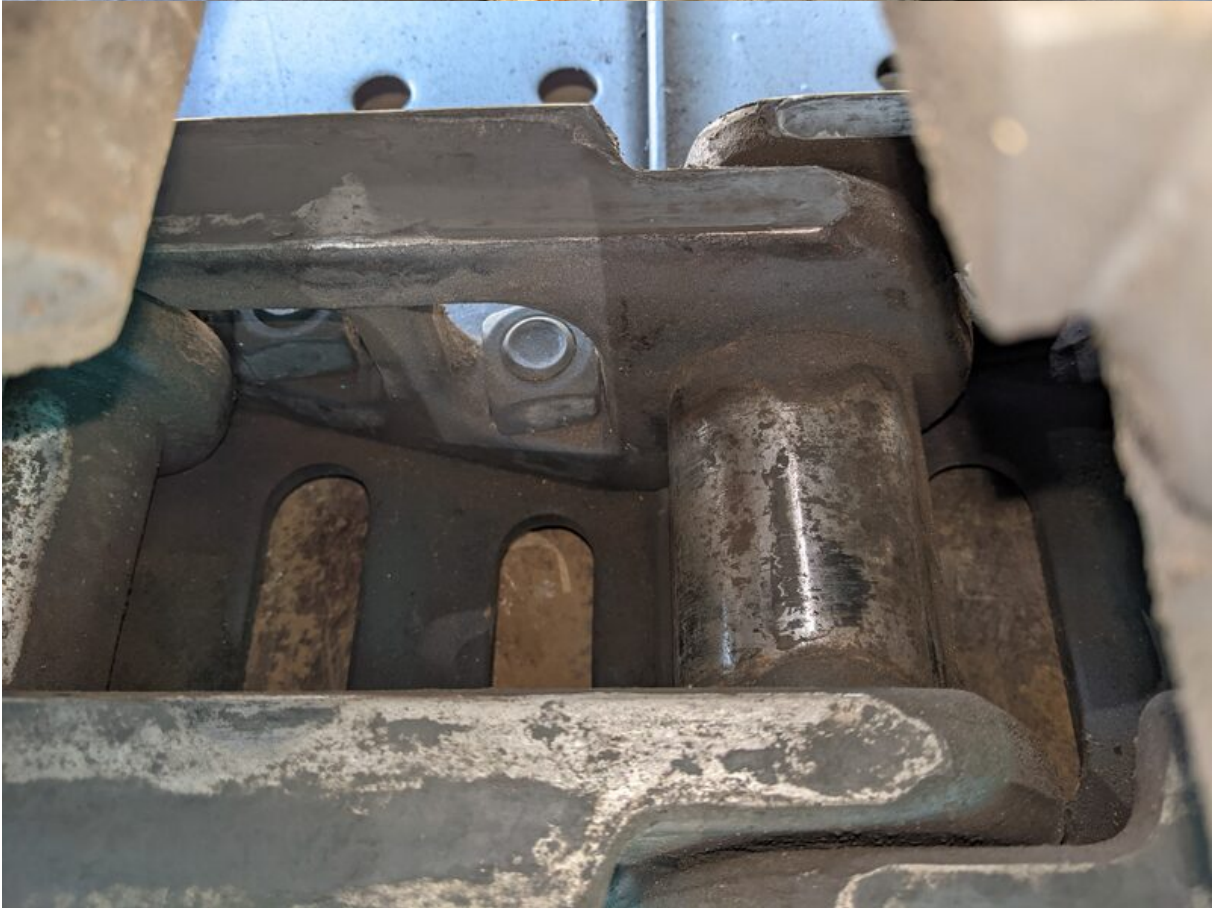
























ロータリマルチ  
コントロール  
操作パターン

操作前に取扱い説明書を読んで、操作パターンを確認してください。

( ISO : コベルコ標準  
H : コマツ, 日立, 住友  
M : 三菱, K : 神鋼 )

**⚠ 危険**

切換時はバケットを接地させ、ロックレバーを「ロック位置」にし、エンジンを停止してから実施してください。

Y12010138801



