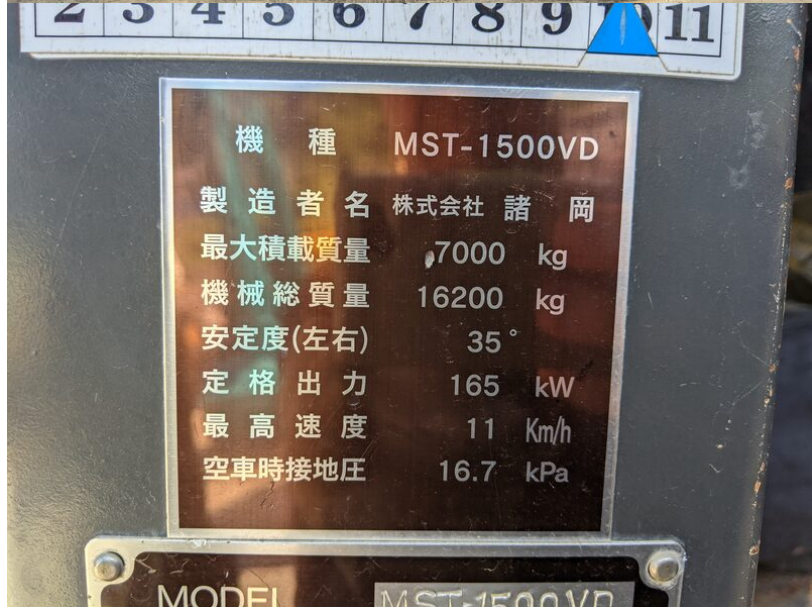


Model MST-1500VD
Year 2011

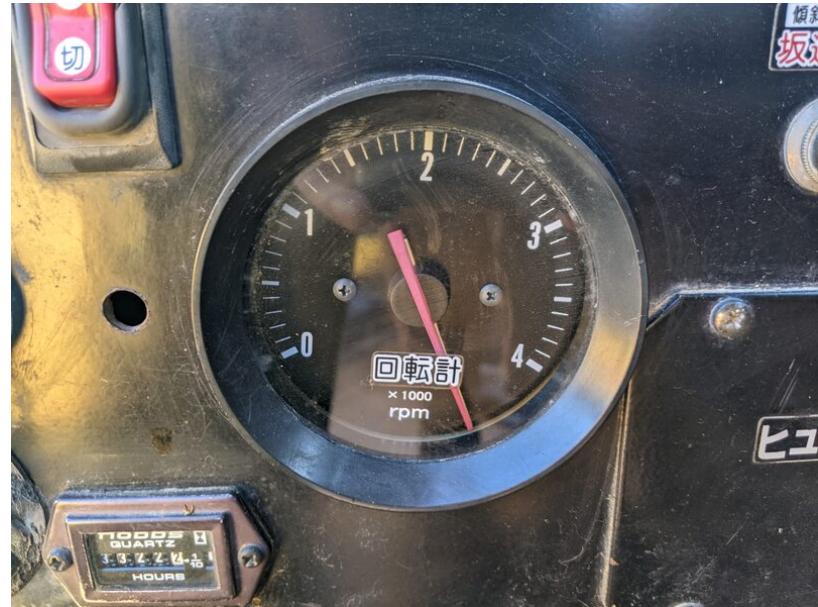
Serial 154324
Hours 3322

Photos taken at Aug. 02, 2024



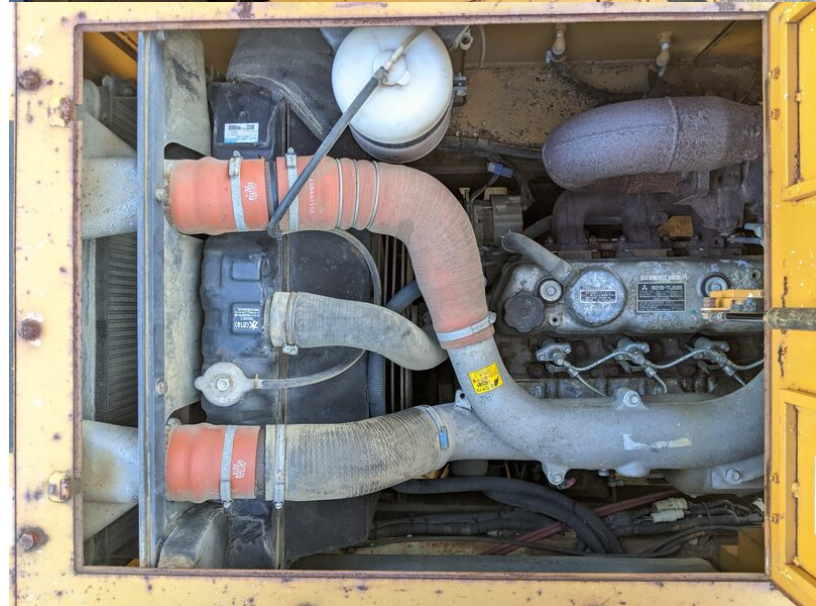


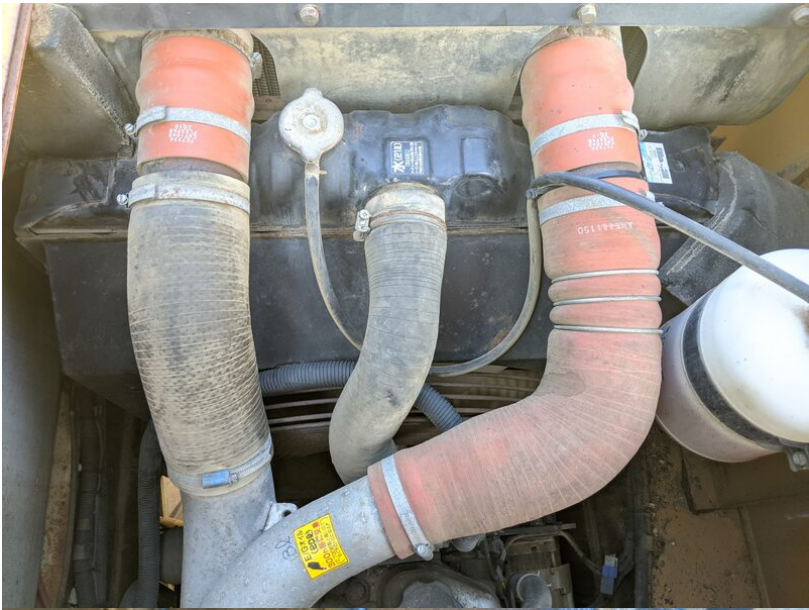
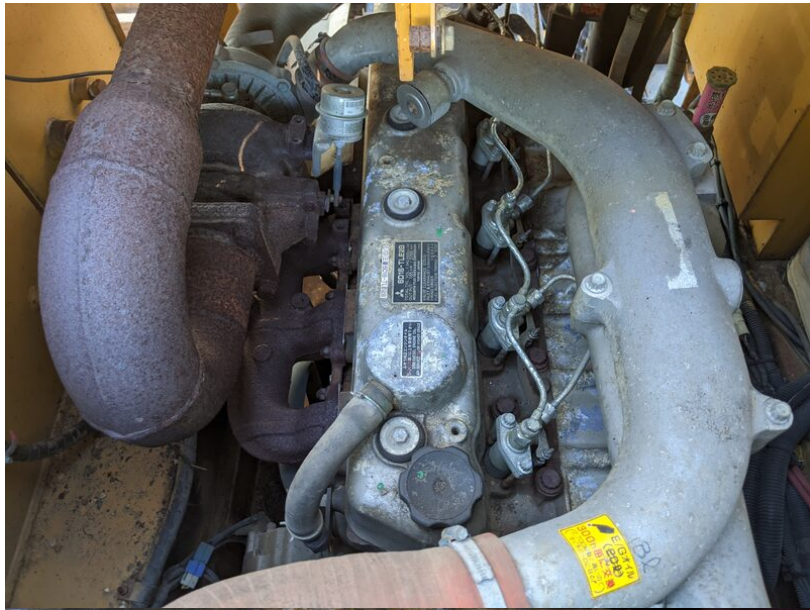












E/G(三菱6D16-TLE2B)

SD16-TLE2B
TOTAL CYL. VOL. 7.54L(460cu.in)
OUT PUT 165 kW / 2700 min⁻¹
MITSUBISHI FUSO TRUCK & BUS CORPORATION
TOKYO JAPAN M265

VALVE CLEARANCE (COLD)
INLET & EXHAUST 0.4mm(0.016in)
FIRING ORDER 1-5-3-6-2-4
FUEL INJECTION TIMING 7° BTDC





