

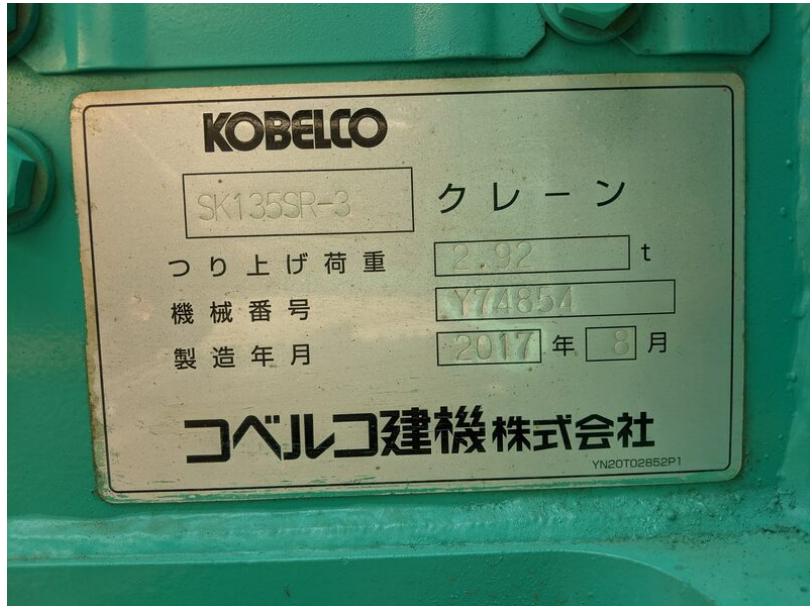
Model SK135SR-3
Year 2017

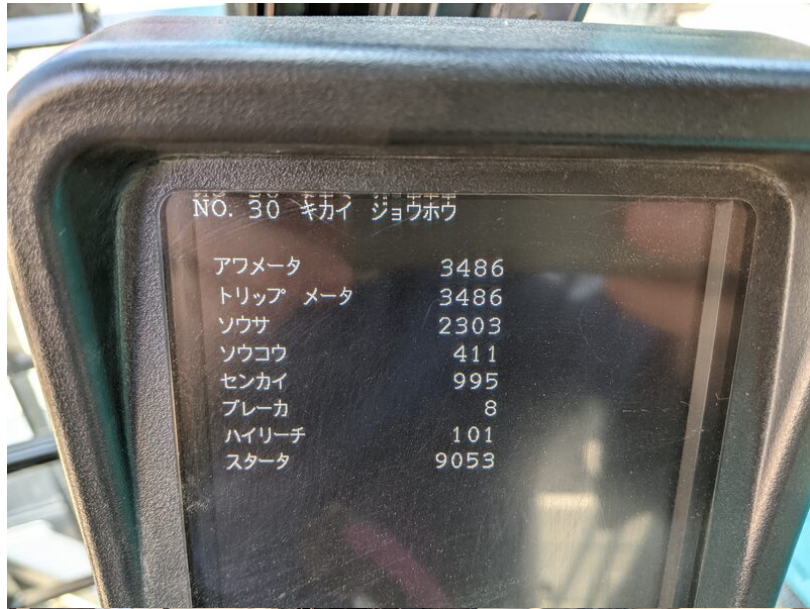
Serial YY07-30639
Hours 3486

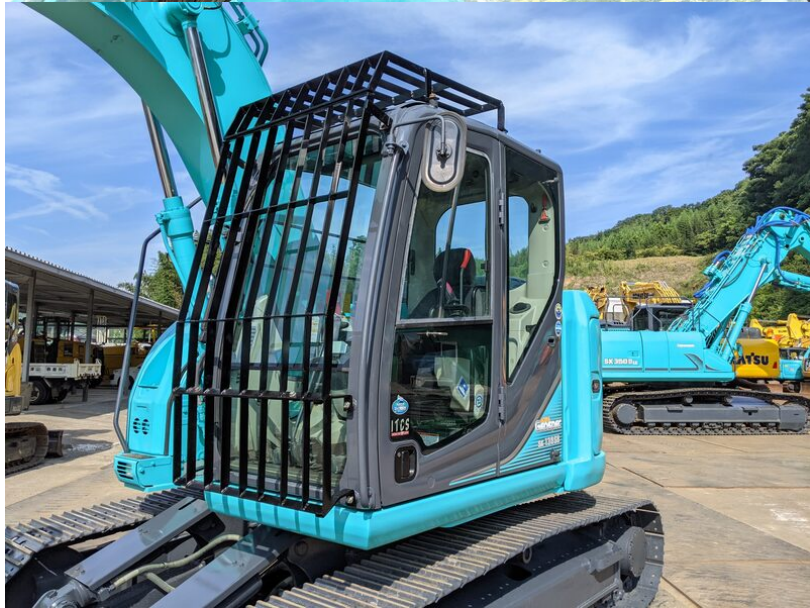
Photos taken at Aug. 07, 2024

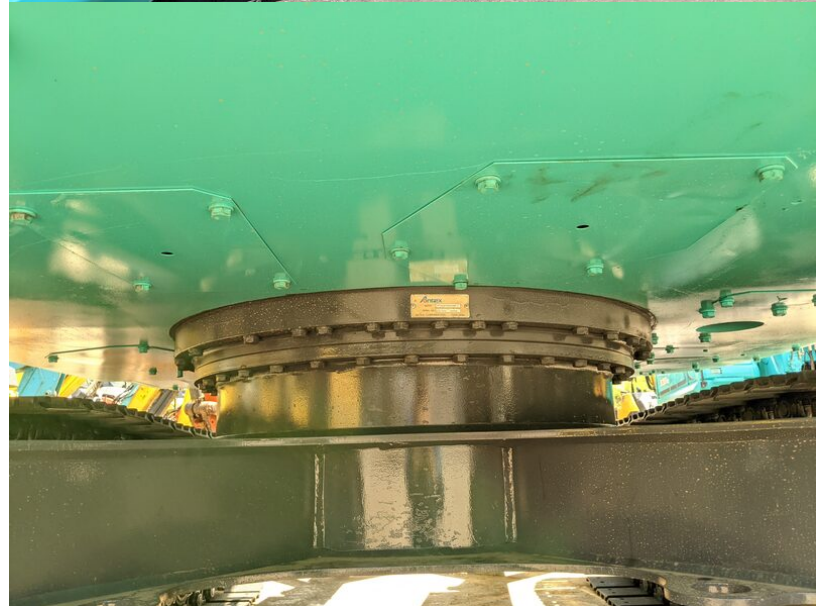


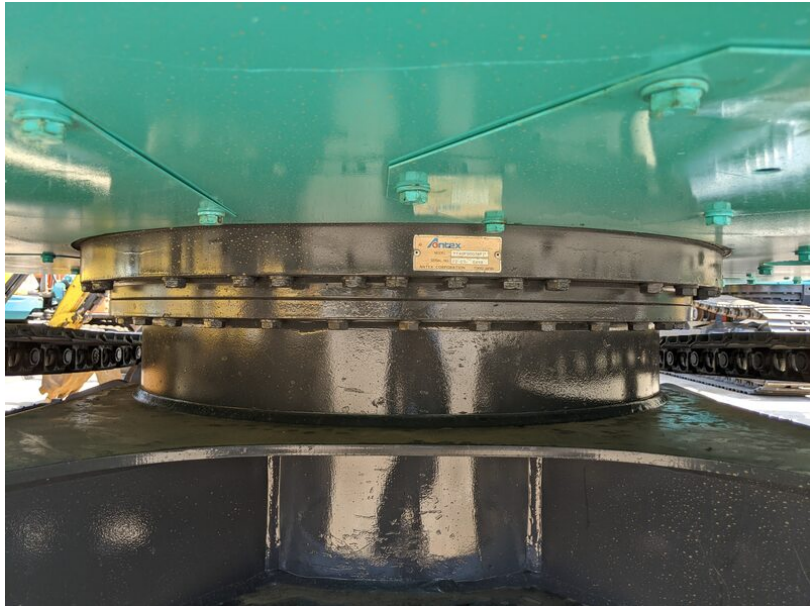


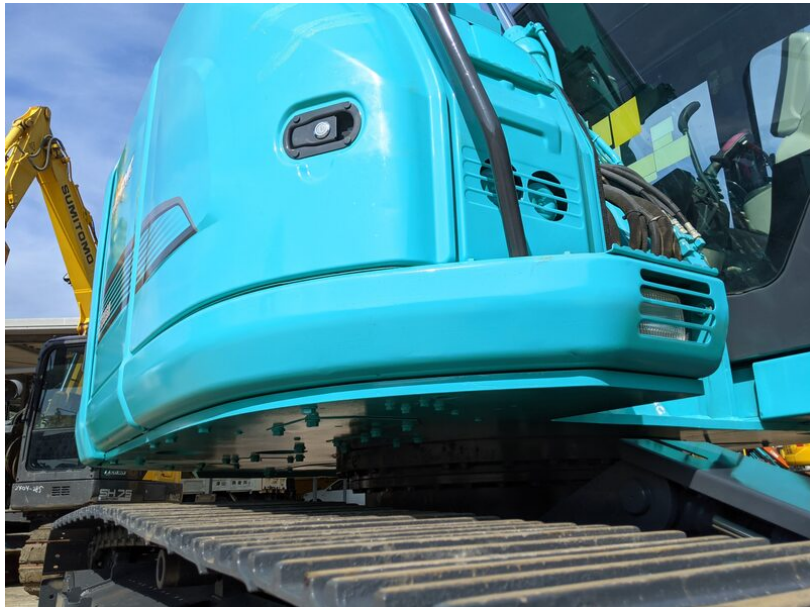


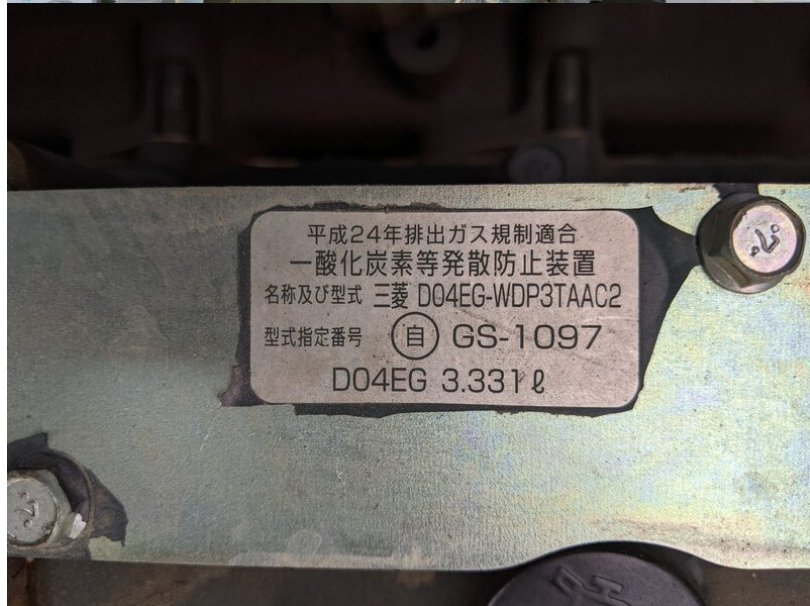


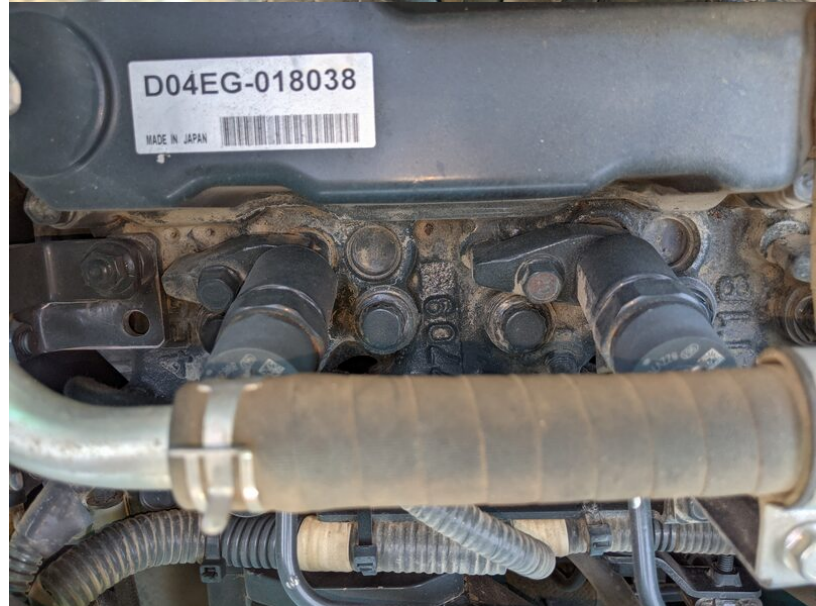
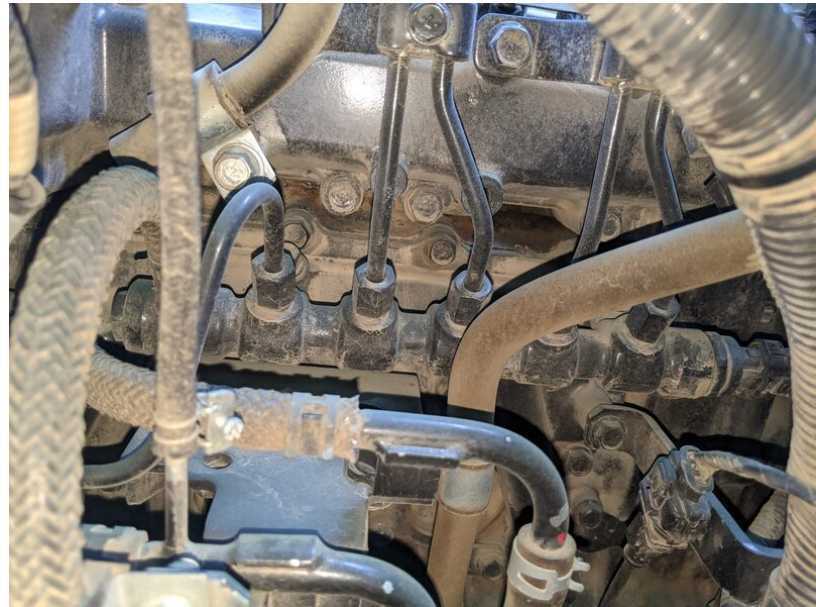


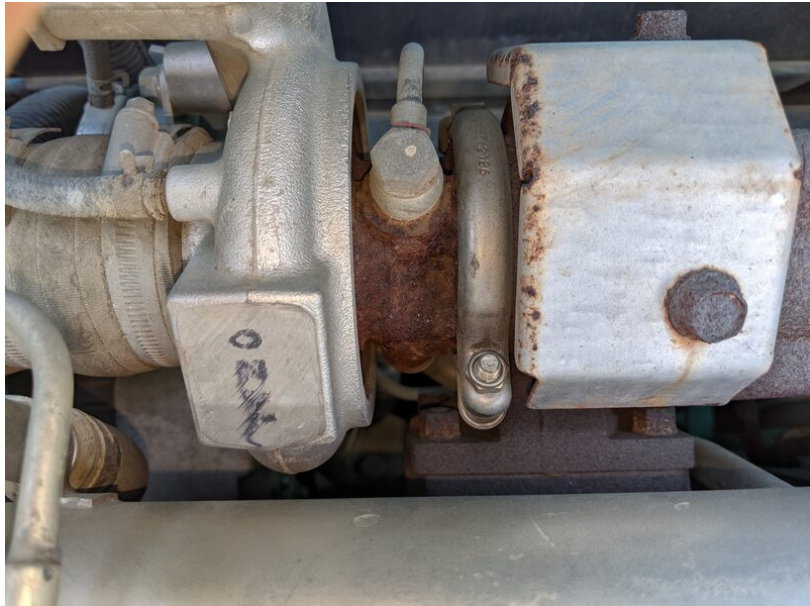




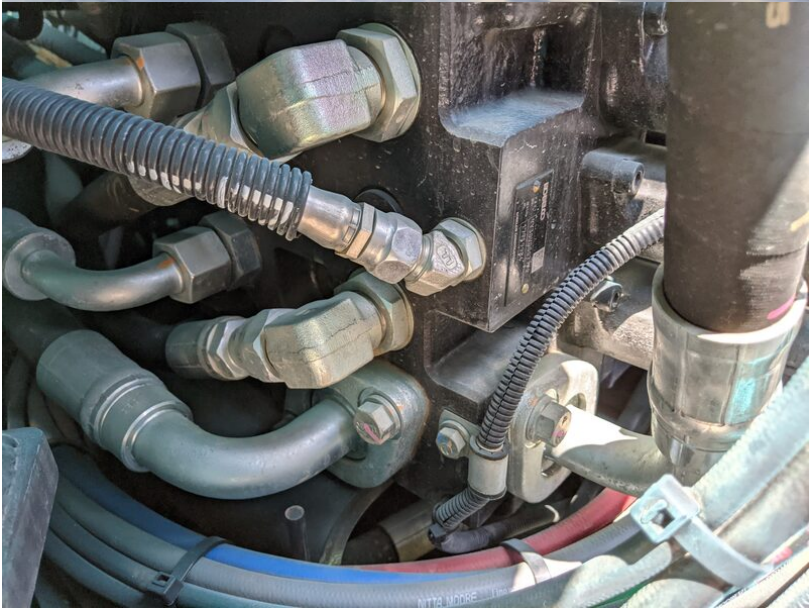




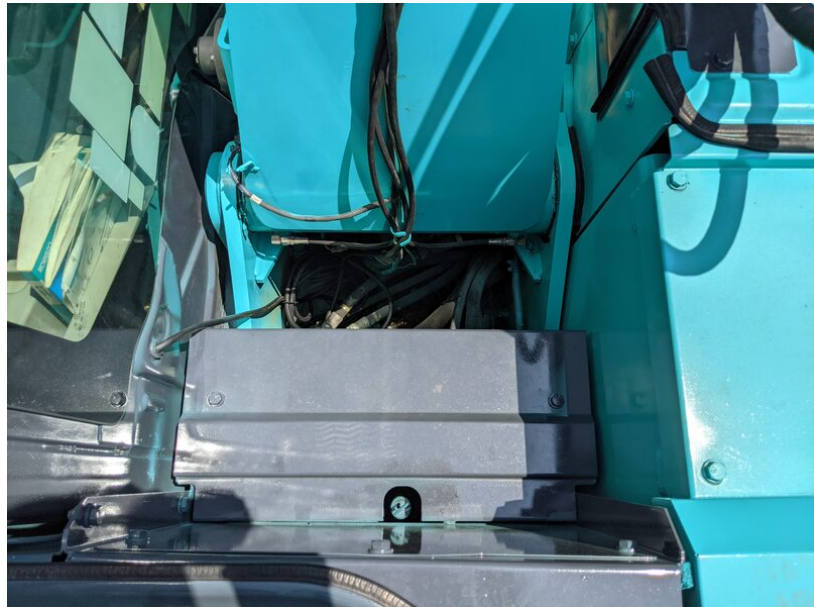


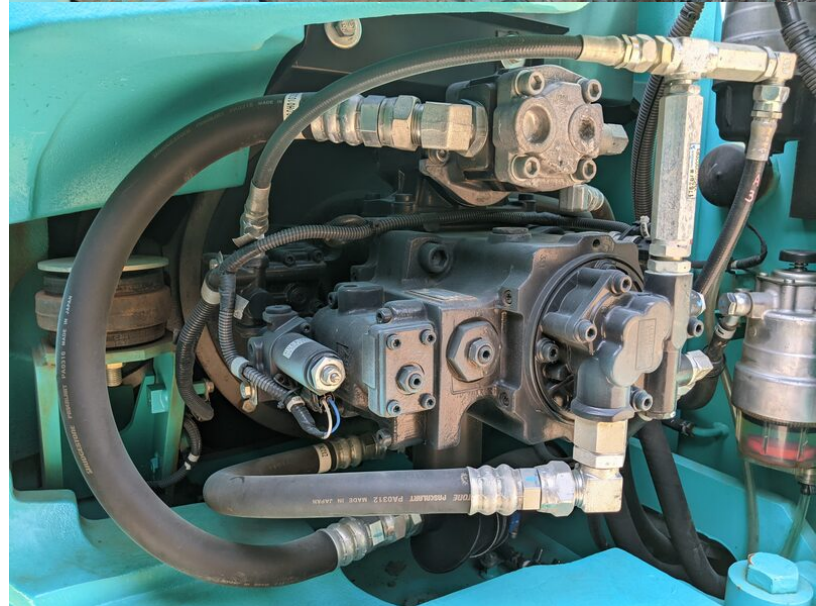


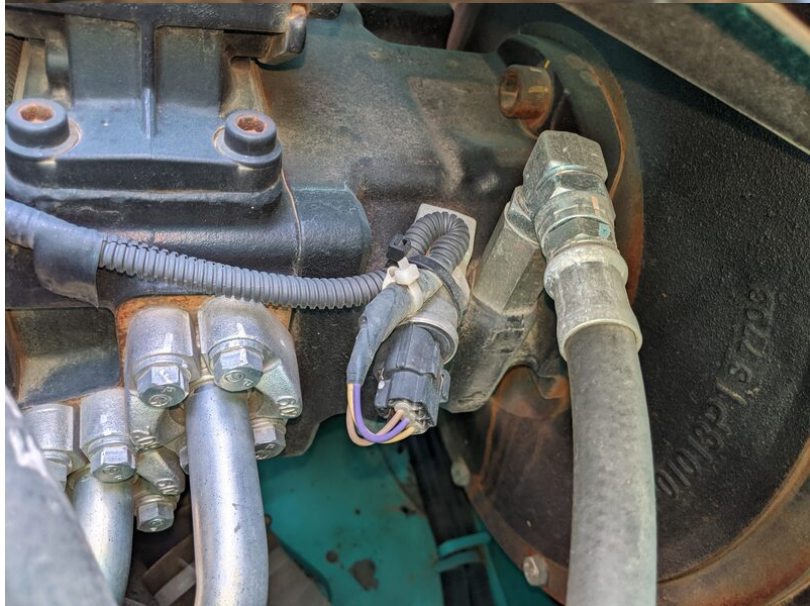






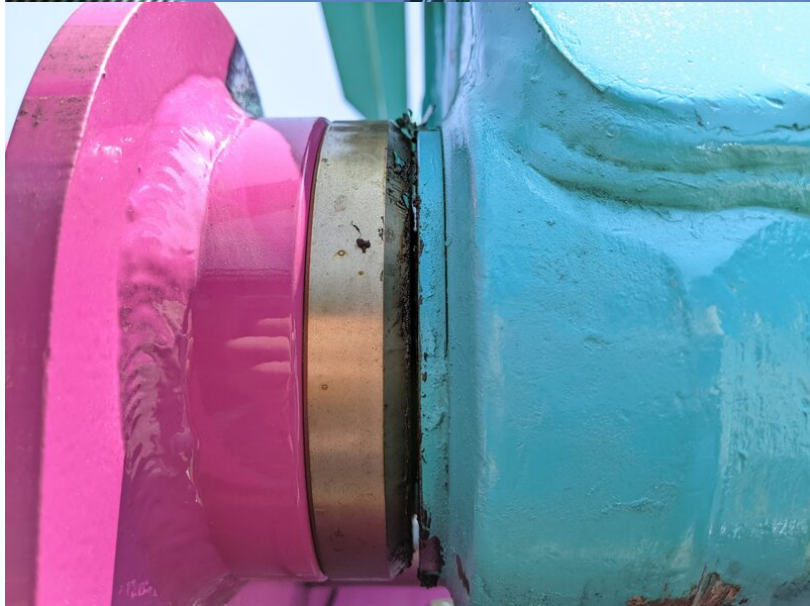
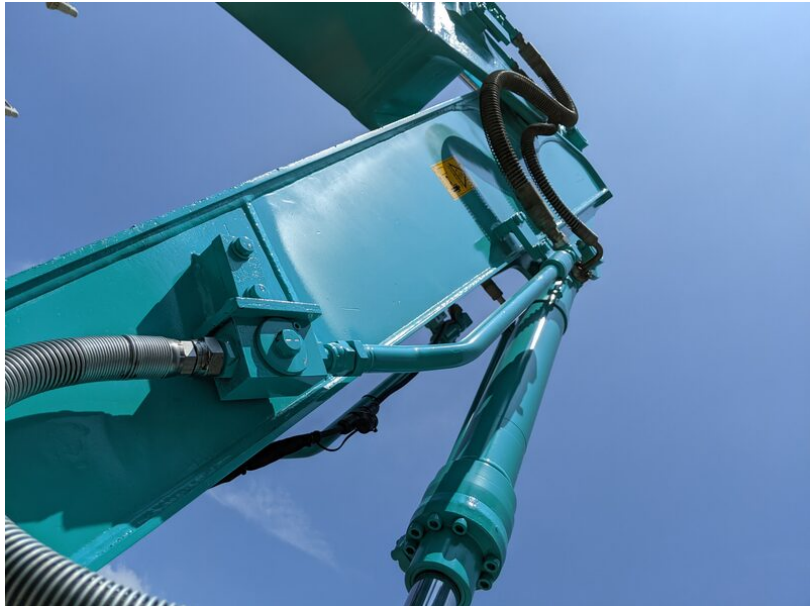






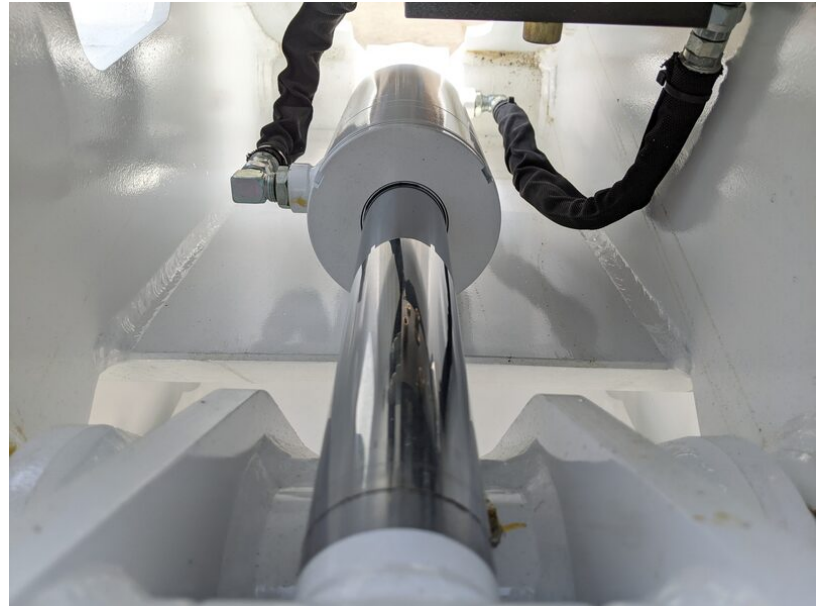
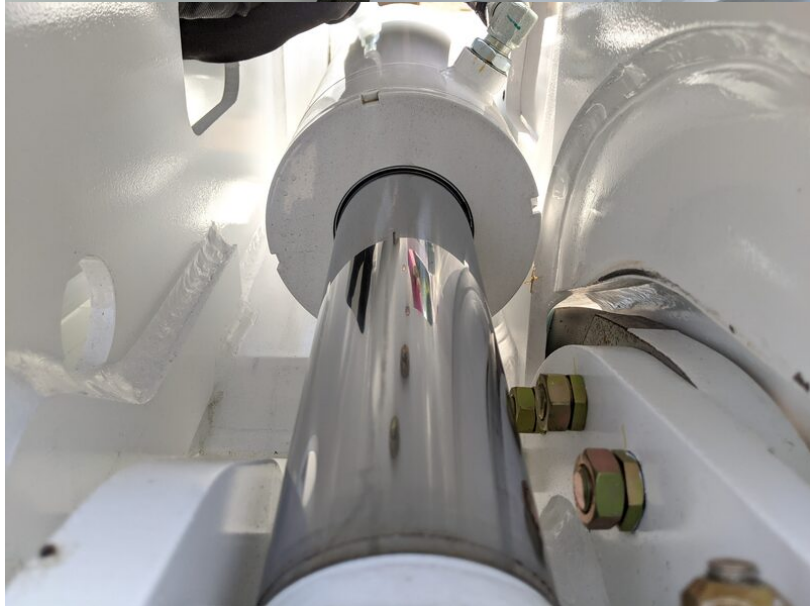
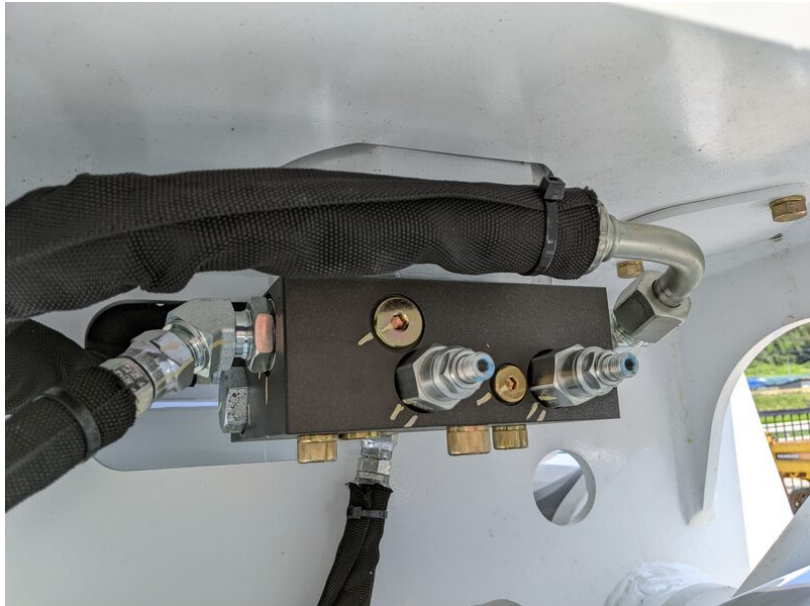


















ロータリマルチ
コントロール
操作パターン
操作前に取扱い説明書
を読んで、操作パターンを
確認してください。
(ISO: コベルコ標準
H: ヤマツ、日立、住友
M: 三菱、K: 神鋼)
危険
切換時はバケットを接地させ、
ロックレバーを「ロック位置」
にし、エンジンを停止してから
実施してください。
Y120Y01388P1

