

Model 311FLRR  
Year 2019

Serial CAT0311FTJFT11018  
Hours 2796

Photos taken at Jun. 27, 2024



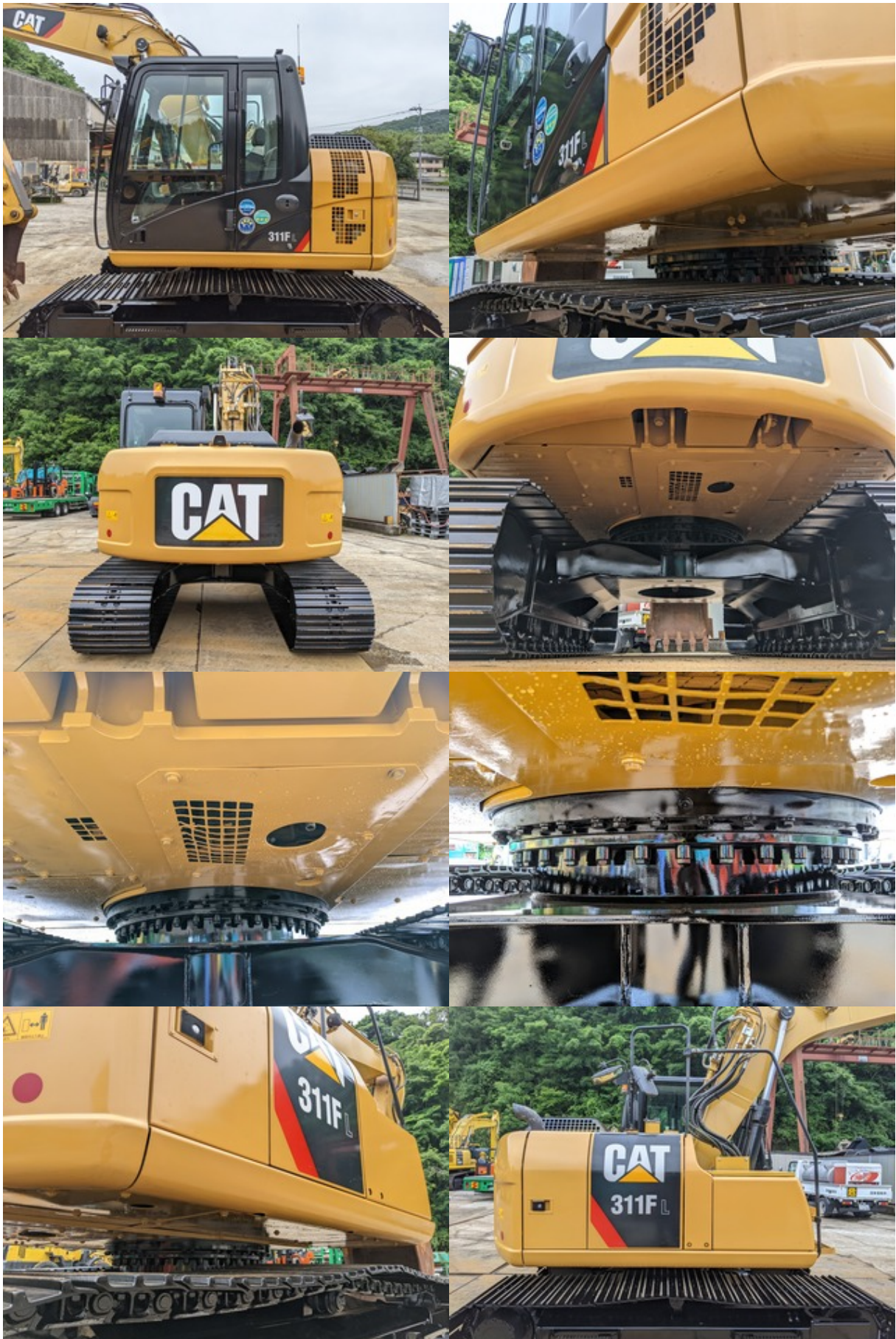
















**FPT** EMISSION CONTROL INFORMATION

ENGINE FAMILY	KFPXLB3.4BPC	Model	C3.4B	Serial	3976/1886
DISPLACEMENT	3.4 L	ADVERTISED POWER	55@1800	Net @ Rpm	POWER CATEGORY 37 < - kW < 56
THIS ENGINE COMPLIES WITH U.S. EPA REGULATIONS FOR		2019	MODEL YEAR NON ROAD AND STATIONARY		
DIESEL ENGINES AND CALIFORNIA REGULATIONS FOR		2019	MODEL YEAR NON ROAD DIESEL ENGINES		
THIS ENGINE IS CERTIFIED TO OPERATE ON:		ULTRA LOW SULFUR FUEL ONLY			
ECC:		DDI ECM TC EGR DOC PTOX			
MANUFACTURED BY FPT INDUSTRIAL S.P.A. IN ITALY					

**FPT** EMISSION CONTROL INFORMATION

ENGINE FAMILY	KFPXLB3.4BPC	Model	C3.4B	Serial	3976/1886
DISPLACEMENT	3.4 L	ADVERTISED POWER	55@1800	Net @ Rpm	POWER CATEGORY 37 < - kW < 56
THIS ENGINE COMPLIES WITH U.S. EPA REGULATIONS FOR		2019	MODEL YEAR NON ROAD AND STATIONARY		
DIESEL ENGINES AND CALIFORNIA REGULATIONS FOR		2019	MODEL YEAR NON ROAD DIESEL ENGINES		
THIS ENGINE IS CERTIFIED TO OPERATE ON:		ULTRA LOW SULFUR FUEL ONLY			
ECC:		DDI ECM TC EGR DOC PTOX			
MANUFACTURED BY FPT INDUSTRIAL S.P.A. IN ITALY					











