

**Model 311FLRR**  
**Year 2019**

**Serial CAT0311FTJFT11018**  
**Hours 2796**

**Photos taken at Jun. 27, 2024**











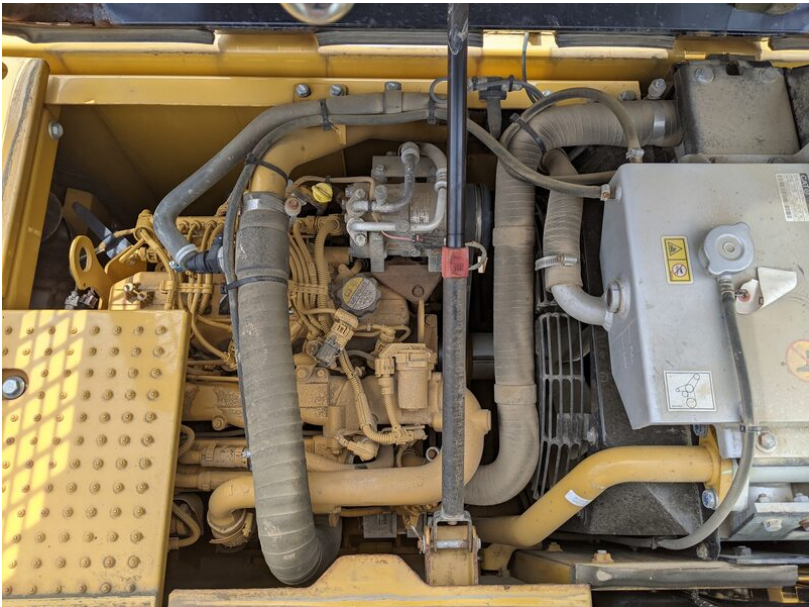
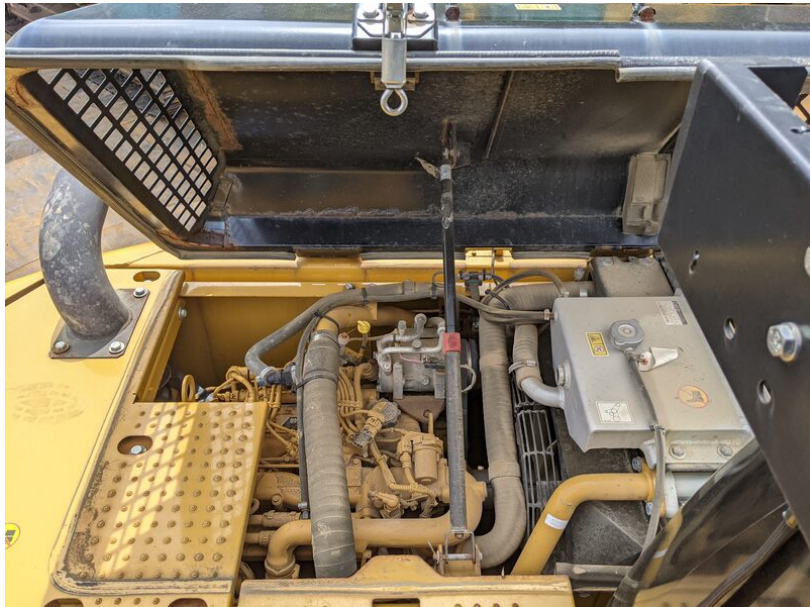


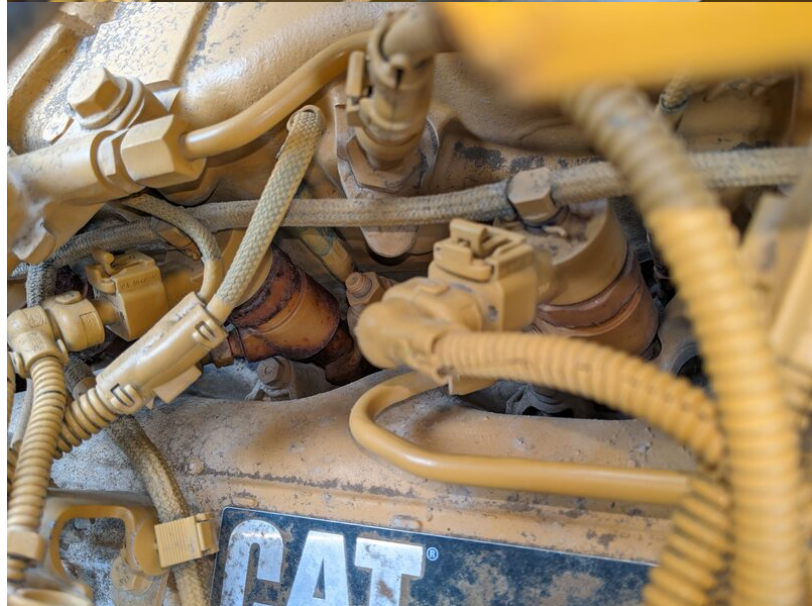
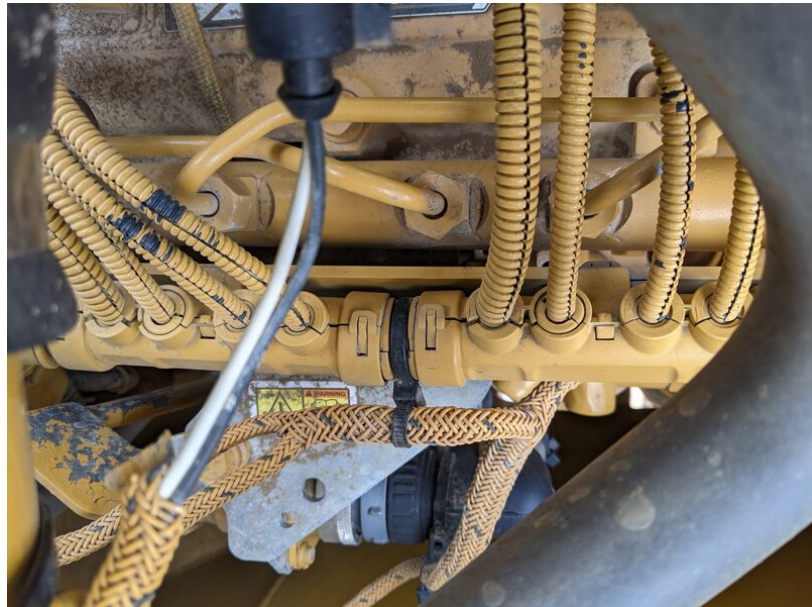
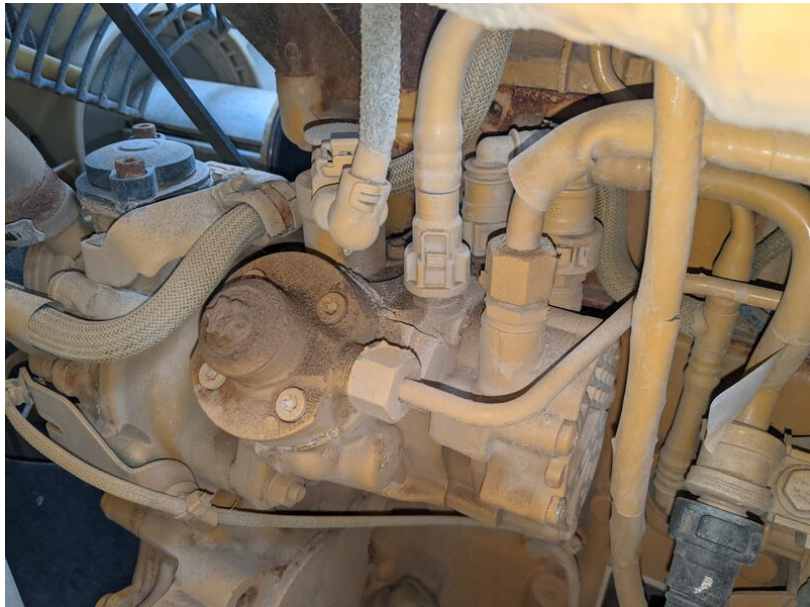






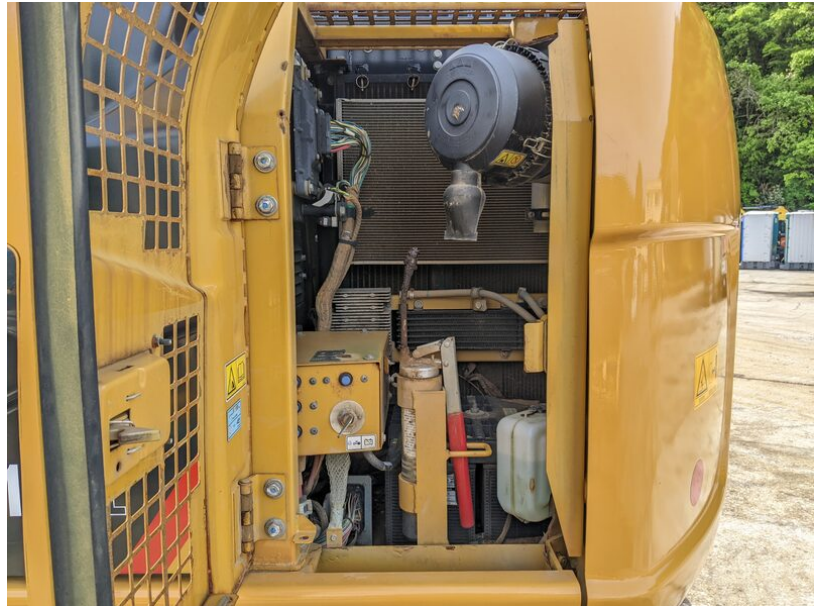


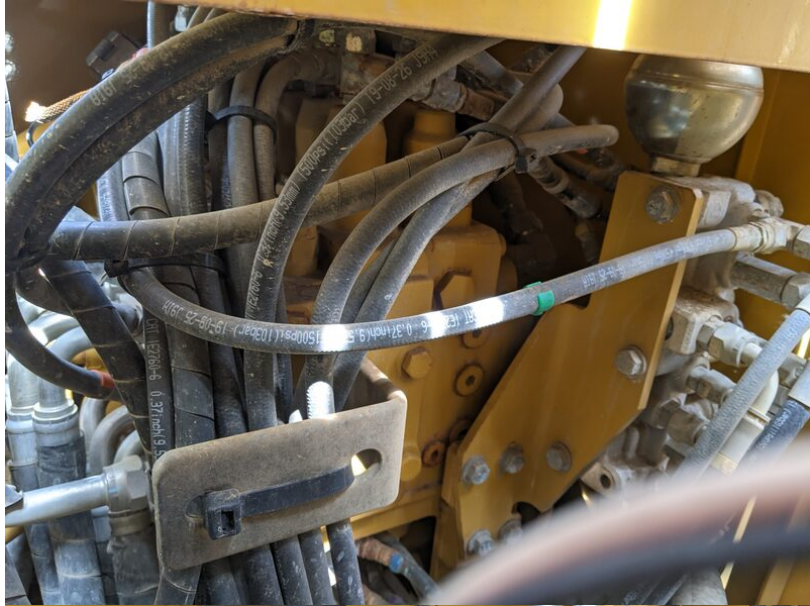


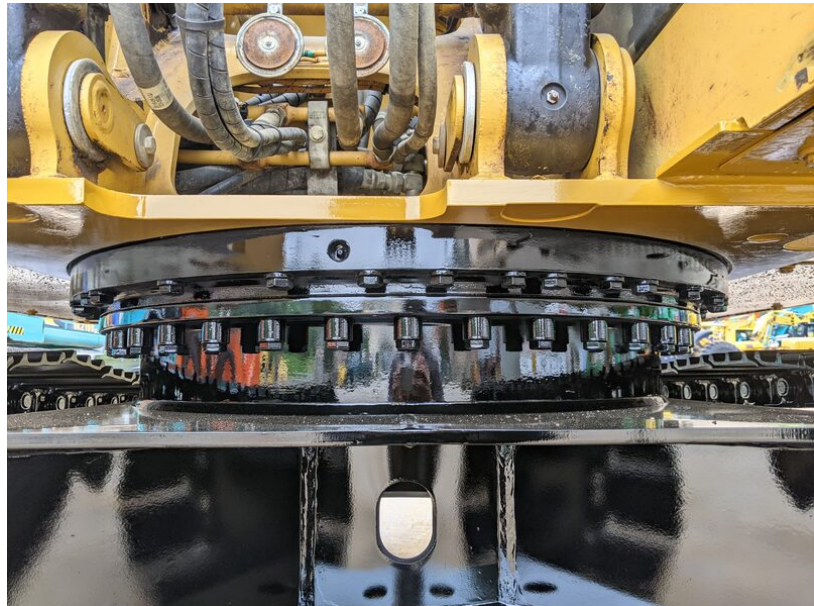




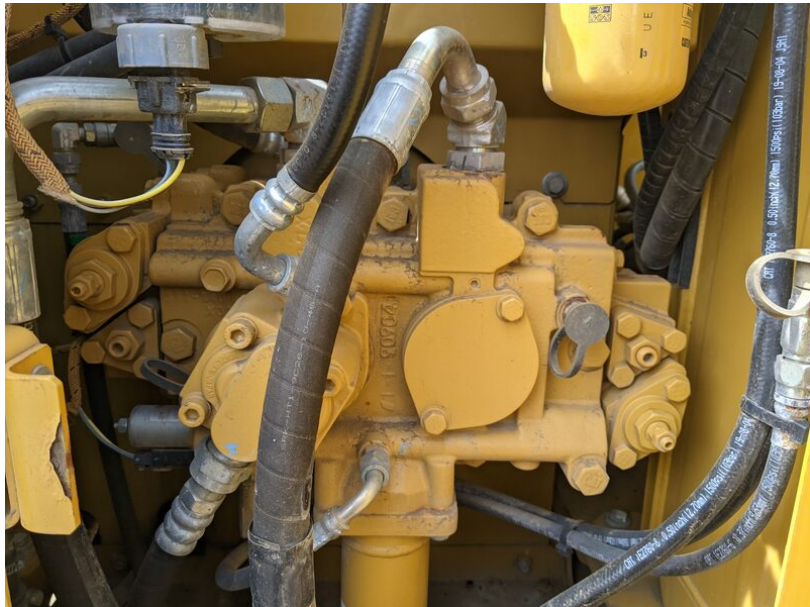






















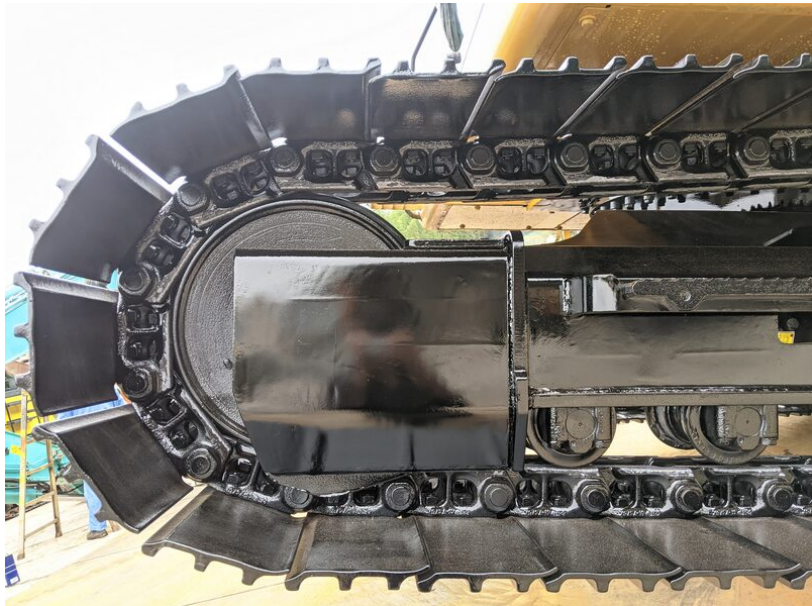




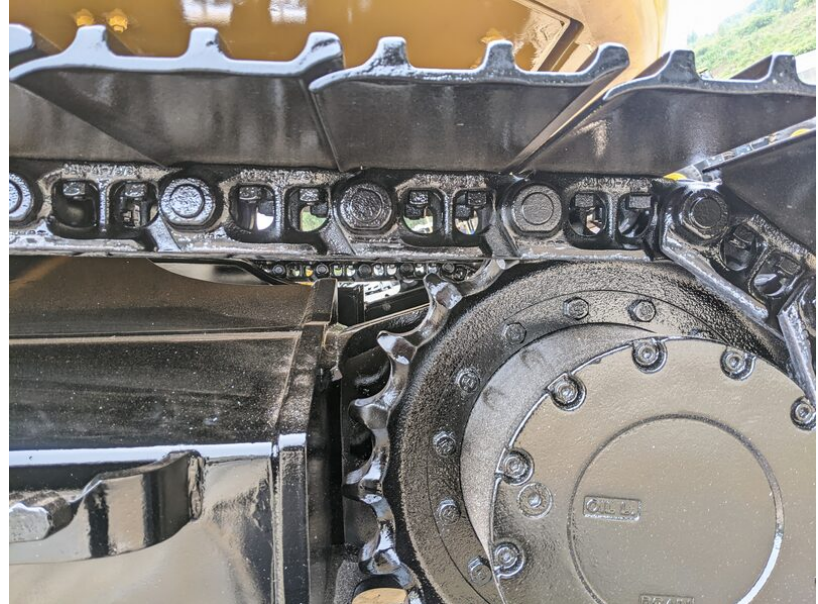




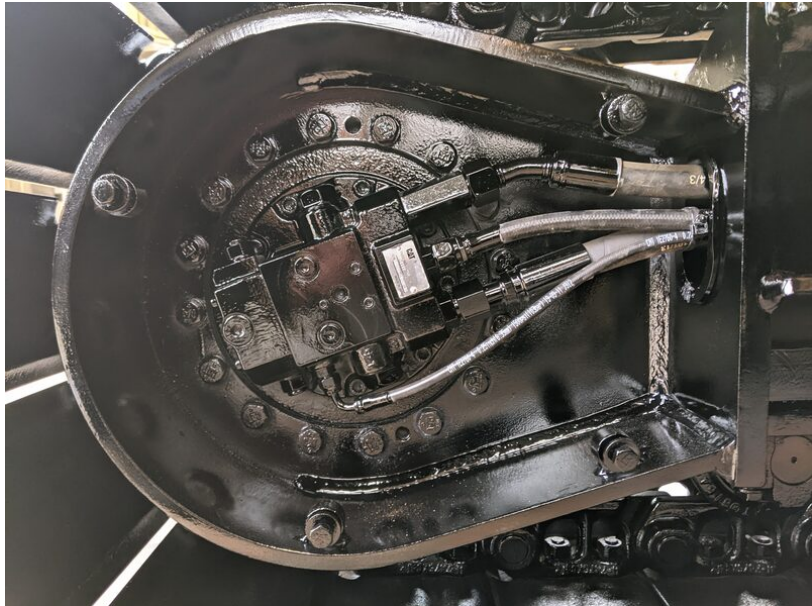








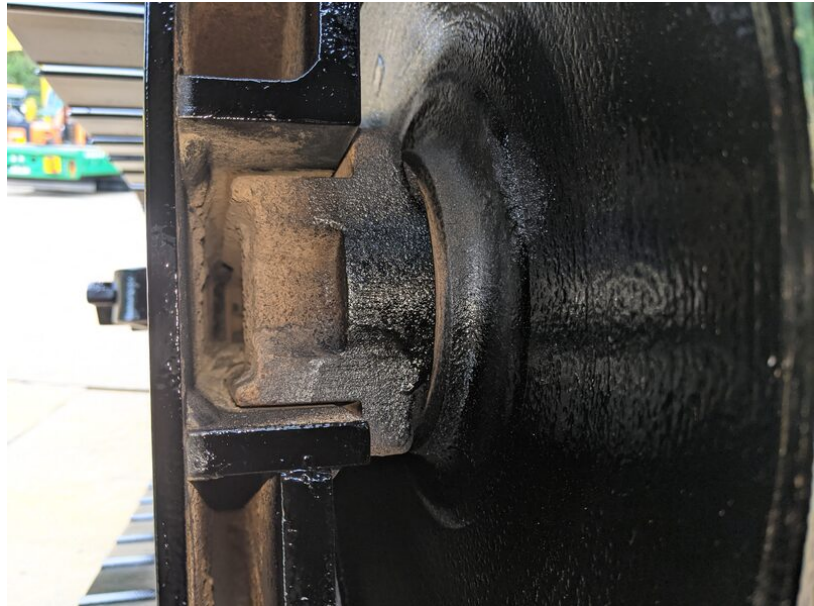
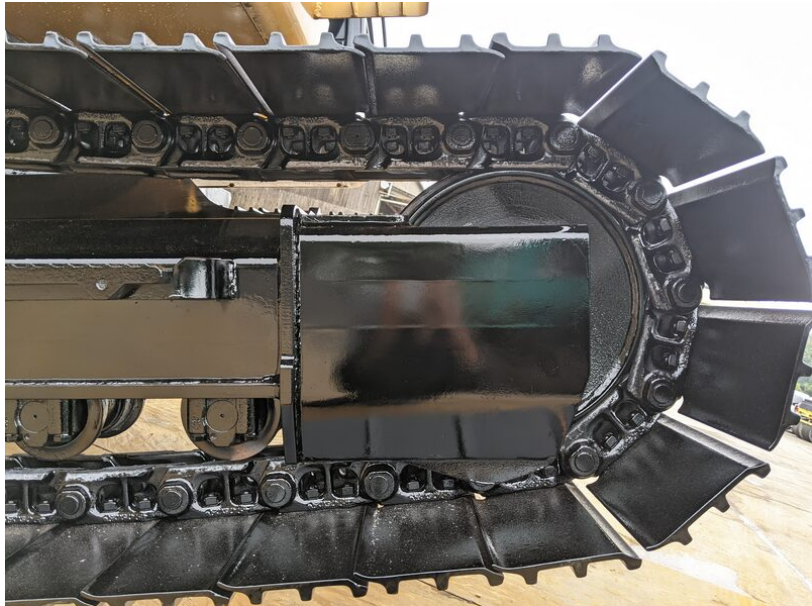


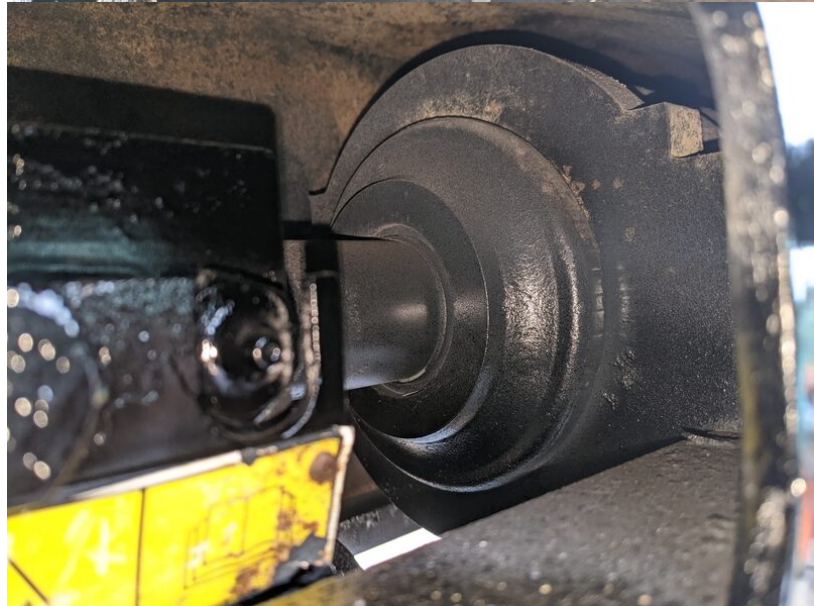




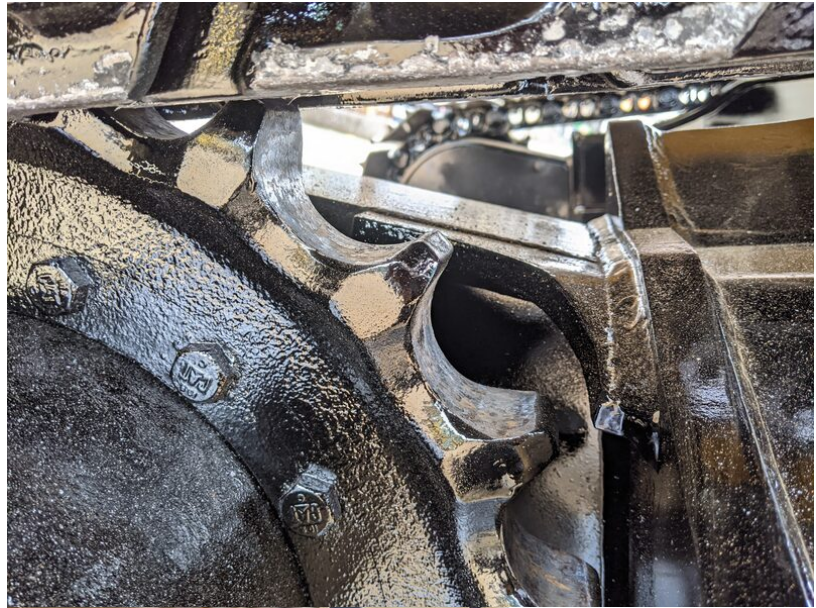


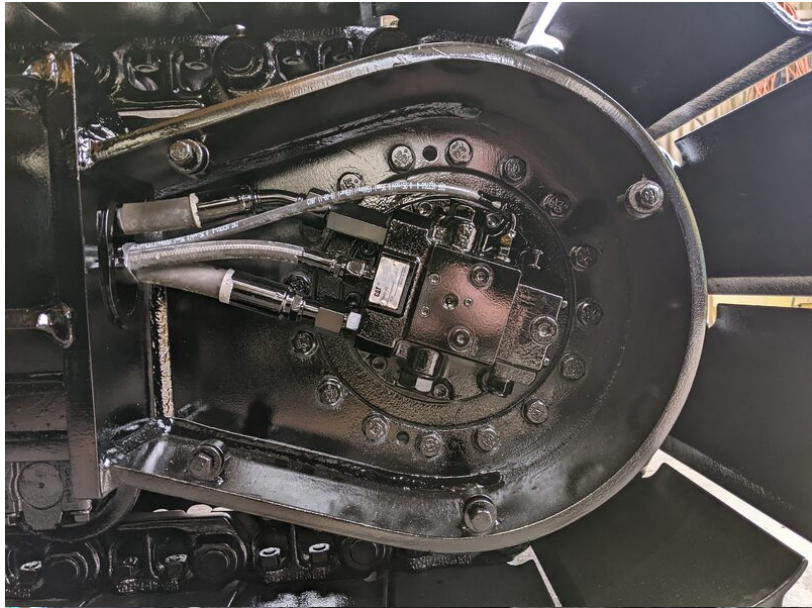












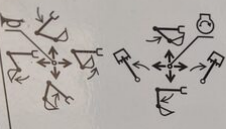
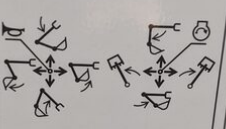
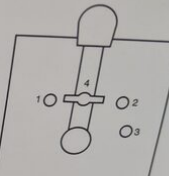
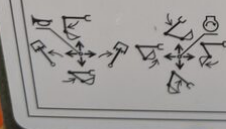








玉掛けロープの重量を差引いた値です  
Japanese 504-804

<p>① 三菱パターン</p> 	<p>② 神鋼パターン</p> 	 <p>パターン選定</p>
<p>③ JIS/CATパターン</p> 	<p>④ 旧SCMパターン</p> 	

- レバーを各パターンの①-④に合わせて下さい。(デントを確認して下さい。)
- パターンセット後フライングボルトでレバーを固定して下さい。

314-3792 1



特定特殊自動車  
軽油  
排出ガス2014年基準  
適合車

環境省・経済産業省・国土交通省

2020年燃費  
100%達成建設

'97 基準値