

Model 311FLRR

Year 2019

Serial CAT0311FTJFT11018

Hours 2796

Photos taken at Jun. 27, 2024

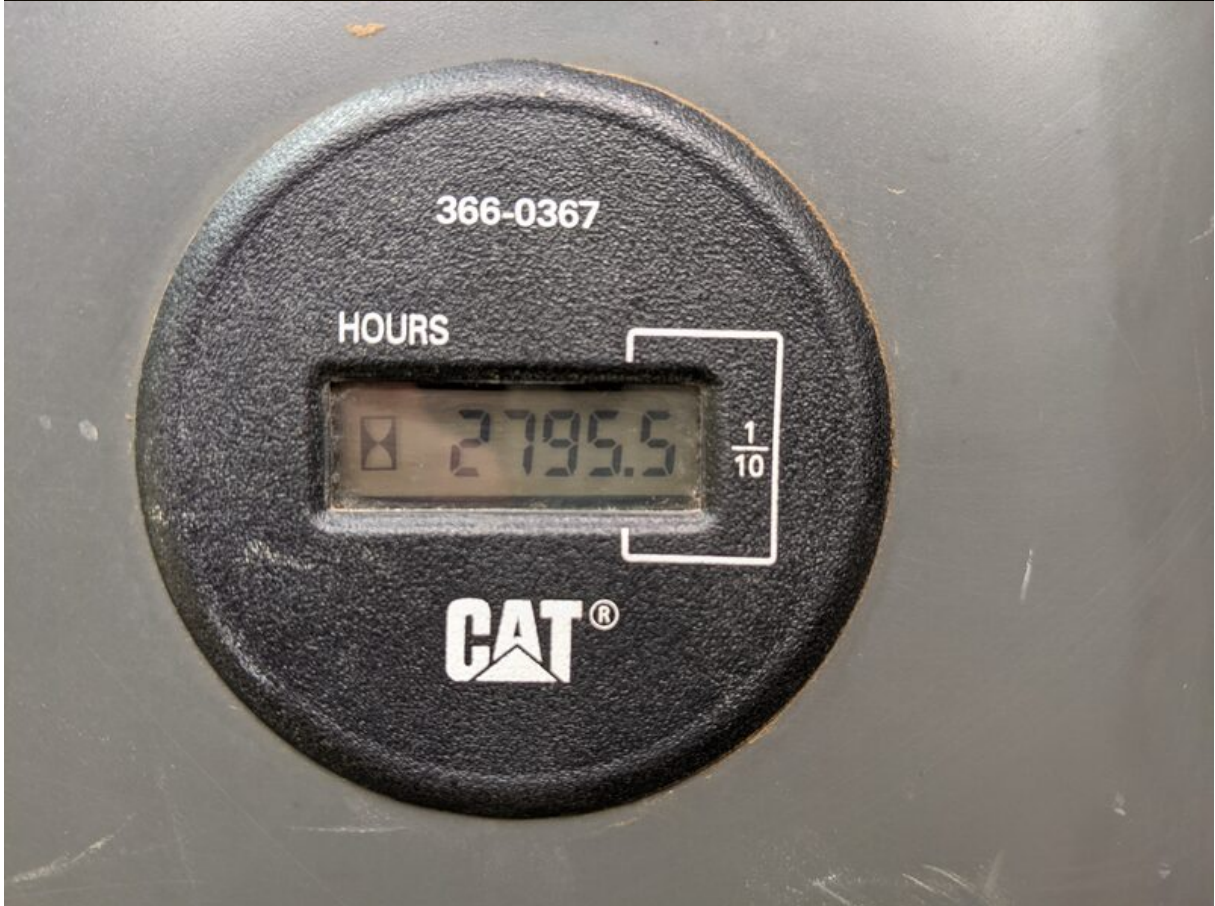


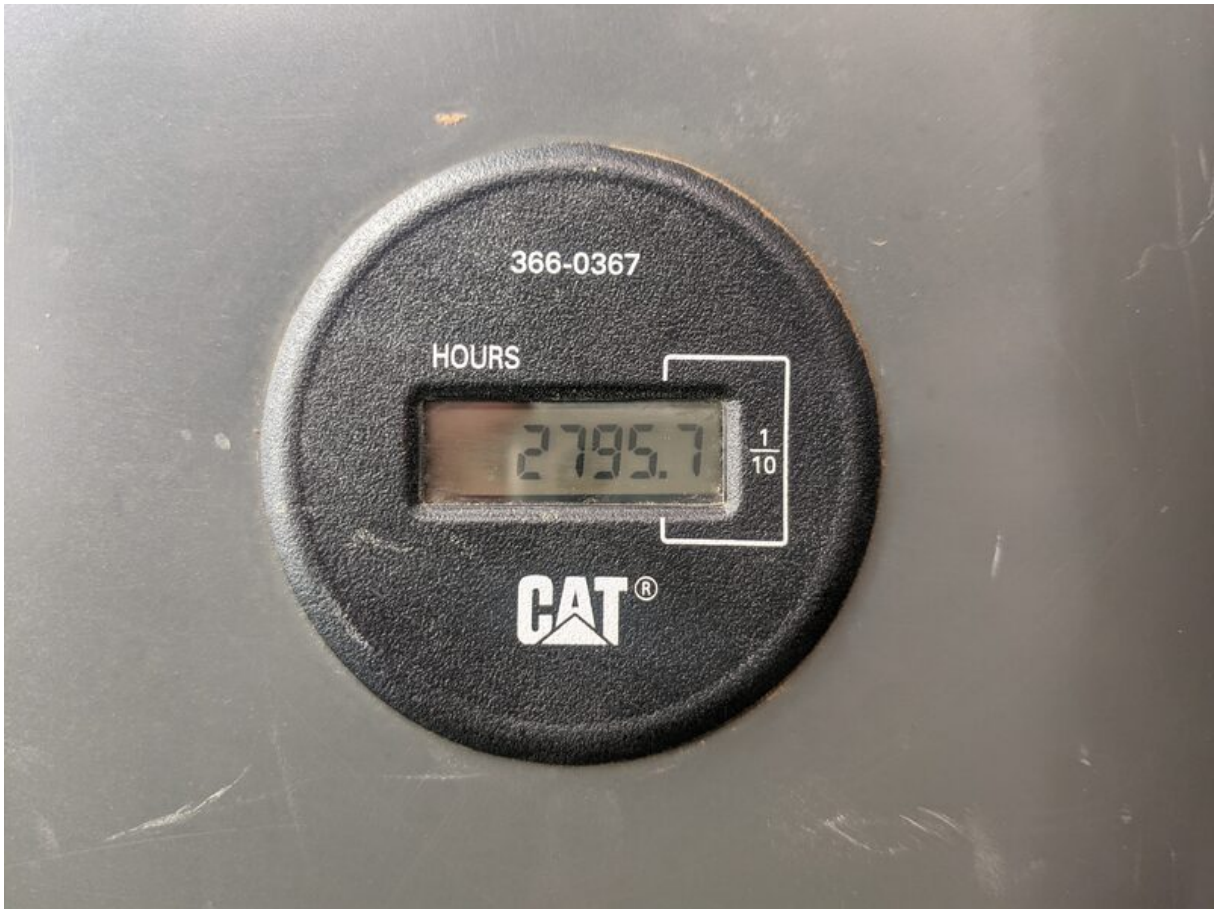




MODEL NUMBER	311FLRR	CAT®	CATERPILLAR®	GE®
PRODUCT IDENTIFICATION NUMBER	*CAT0311FTJFT11018*			
239-6986 7		2019	CATERPILLAR INC. PEORIA, IL 61629 USA	ISSUE
		MADE IN JAPAN OF DOMESTIC AND FOREIGN COMPONENTS		

OF DOMESTIC AND FOREIGN COMPONENTS

























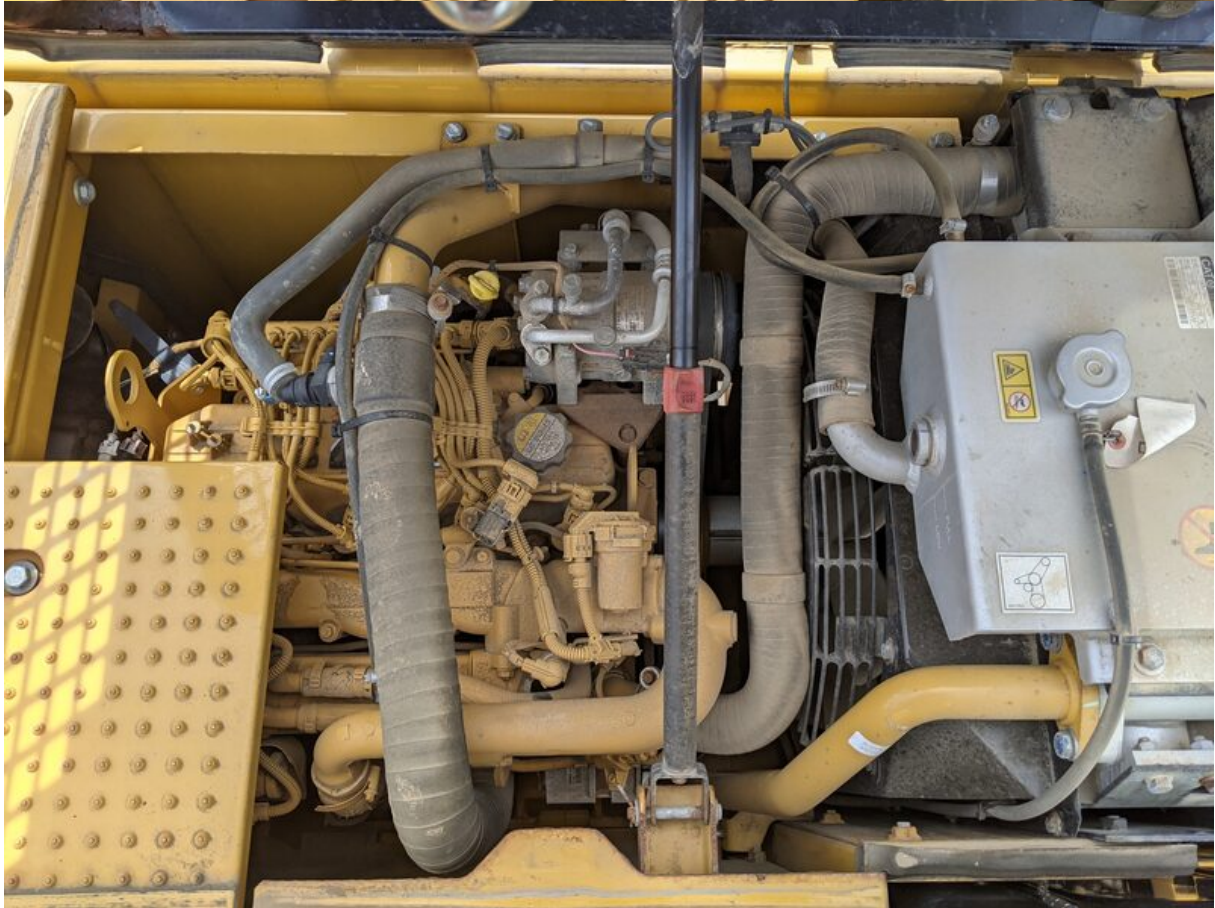
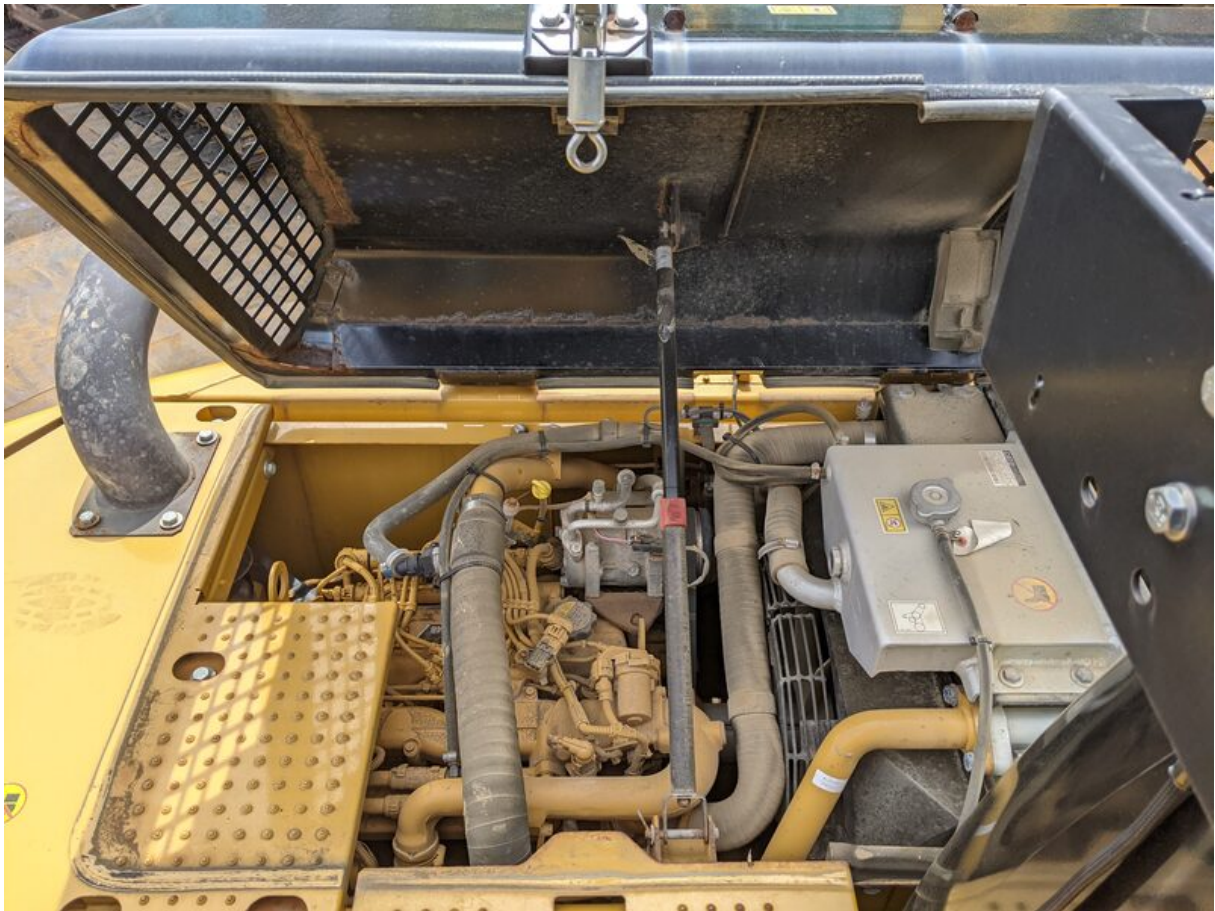


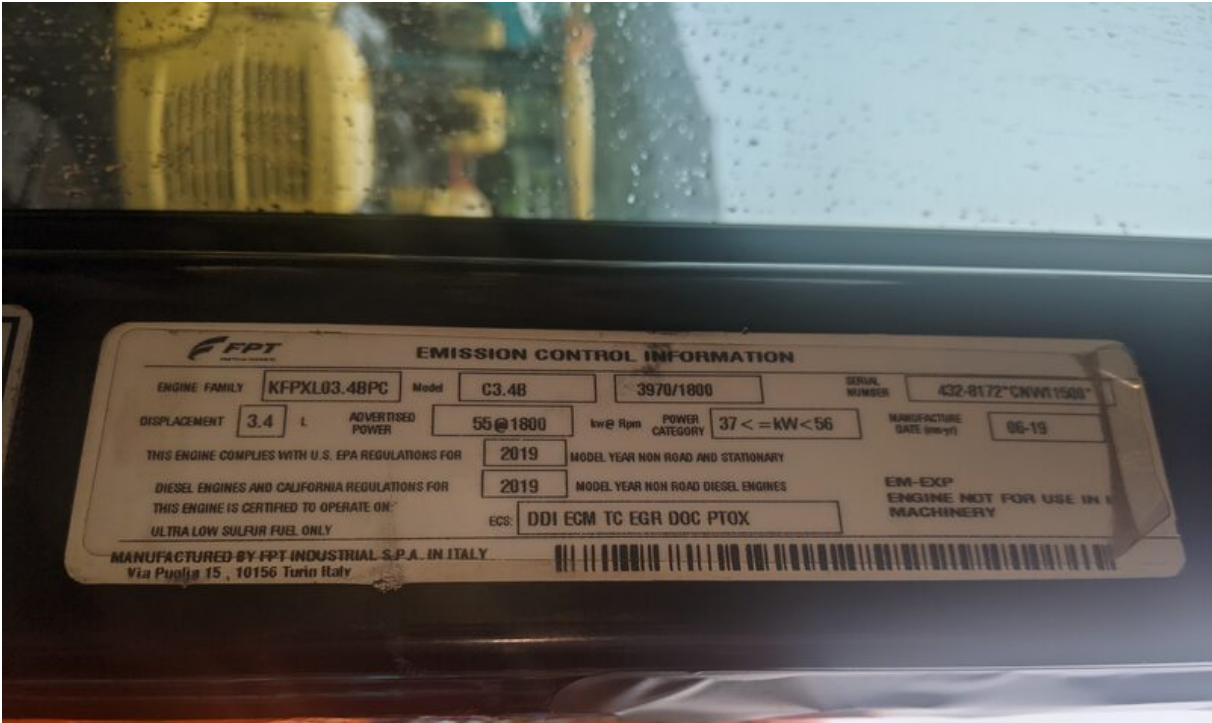












**FPT**  
**EMISSION CONTROL INFORMATION**

ENGINE FAMILY	KFPXL03.4BPC	Model	C3.4B	3970/1800	SERIAL NUMBER	432-8172*CNW11500*
DISPLACEMENT	3.4 L	ADVERTISED POWER	55@1800	kw@ Rpm	POWER CATEGORY	37 <= kW < 56
THIS ENGINE COMPLIES WITH U.S. EPA REGULATIONS FOR		2019	MODEL YEAR NON ROAD AND STATIONARY			
DIESEL ENGINES AND CALIFORNIA REGULATIONS FOR		2019	MODEL YEAR NON ROAD DIESEL ENGINES			
THIS ENGINE IS CERTIFIED TO OPERATE ON:		EM-EXP ENGINE NOT FOR USE IN MACHINERY				
ULTRA LOW SULFUR FUEL ONLY		ECS: DDI ECM TC EGR DOC PTOX				
MANUFACTURED BY FPT INDUSTRIAL S.P.A. IN ITALY Via Puollia 15, 10156 Turin Italy						



**FPT**  
**EMISSION CONTROL INFORMATION**

ENGINE FAMILY	KFPXL03.4BPC	Model	C3.4B	3970/1800	SERIAL NUMBER	
DISPLACEMENT	3.4 L	ADVERTISED POWER	55@1800	kw@ Rpm	POWER CATEGORY	37 <= kW < 56
THIS ENGINE COMPLIES WITH U.S. EPA REGULATIONS FOR		2019	MODEL YEAR NON ROAD AND STATIONARY			
DIESEL ENGINES AND CALIFORNIA REGULATIONS FOR		2019	MODEL YEAR NON ROAD DIESEL ENGINES			
THIS ENGINE IS CERTIFIED TO OPERATE ON:		EM-EXP ENGINE NOT FOR USE IN MACHINERY				
ULTRA LOW SULFUR FUEL ONLY		ECS: DDI ECM TC EGR DOC PTOX				
MANUFACTURED BY FPT INDUSTRIAL S.P.A. IN ITALY Via Puollia 15, 10156 Turin Italy						

