

Model 311FLRR

Year 2019

Serial CAT0311FTJFT11018

Hours 2796

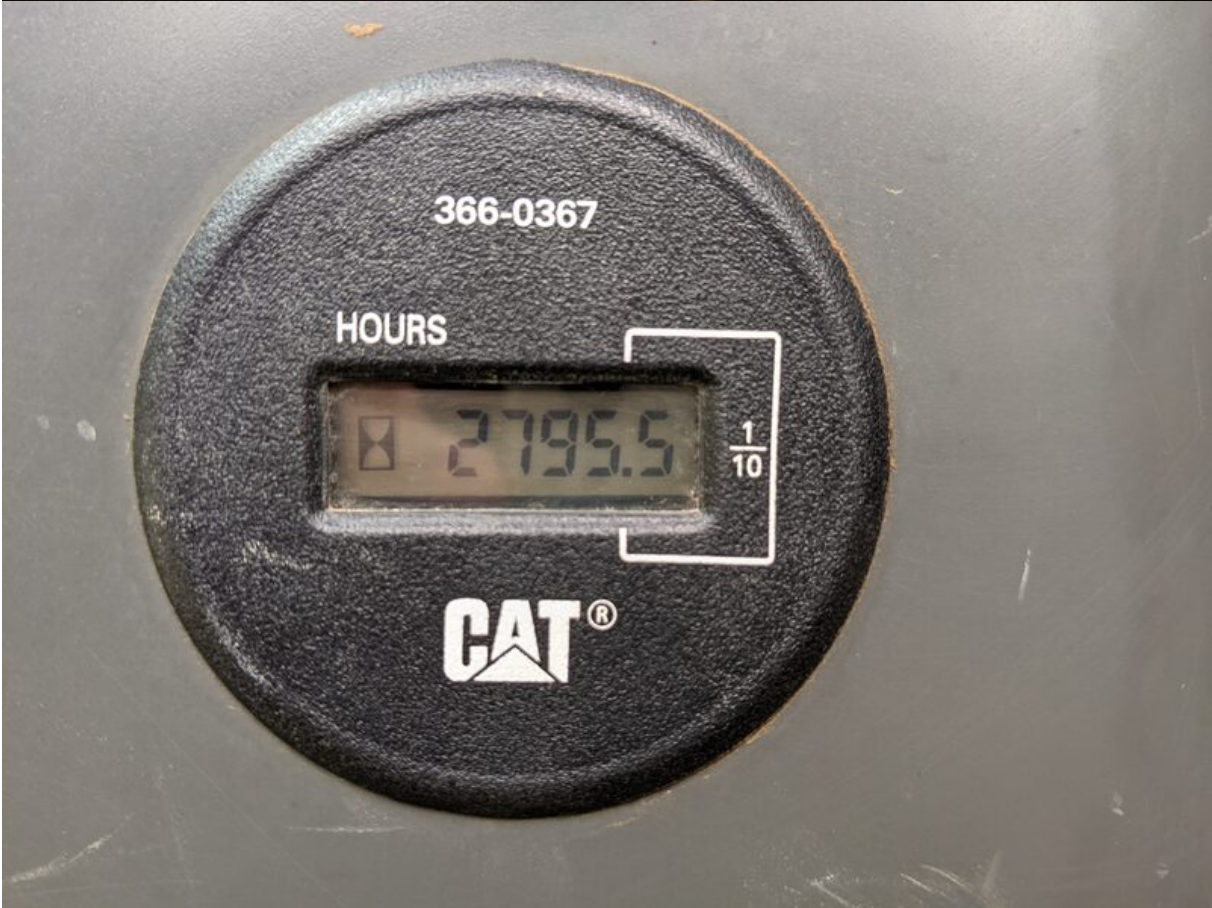
Photos taken at Jun. 27, 2024

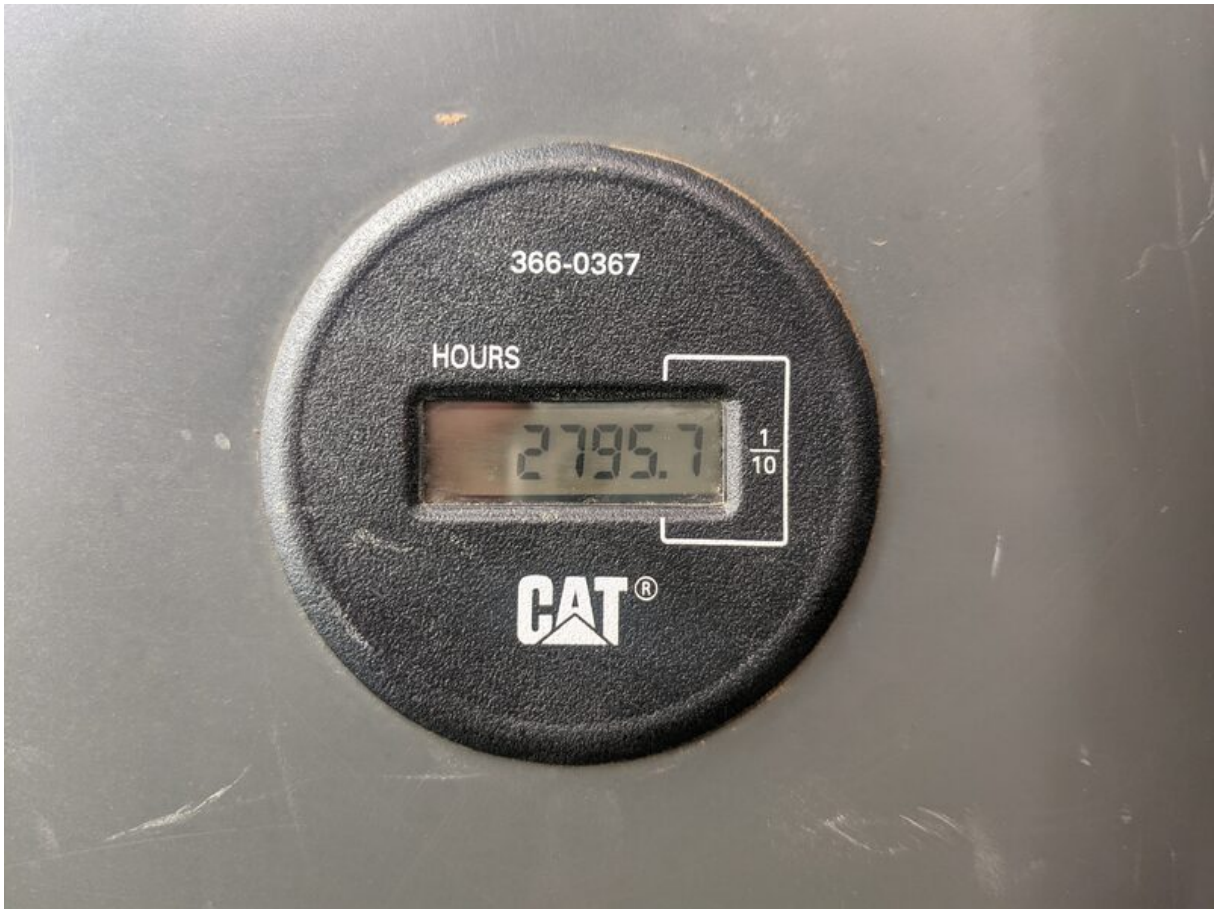






MODEL NUMBER	311FLRR	CAT®	CATERPILLAR®	
PRODUCT IDENTIFICATION NUMBER	*CAT0311FTJFT11018*			
		2019		CATERPILLAR INC. PEORIA, IL 61629 USA
239-6986 7		MADE IN JAPAN OF DOMESTIC AND FOREIGN COMPONENTS		ISSUE

























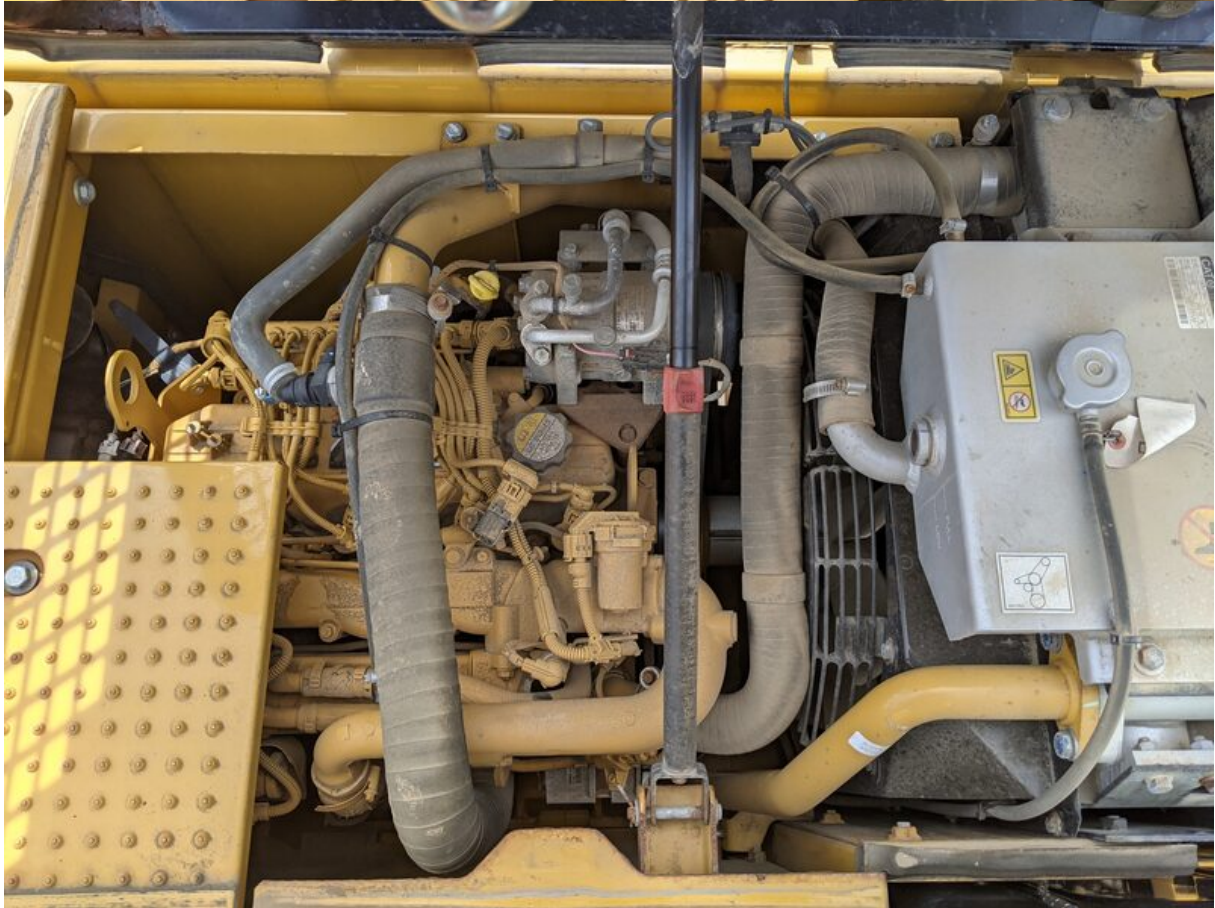
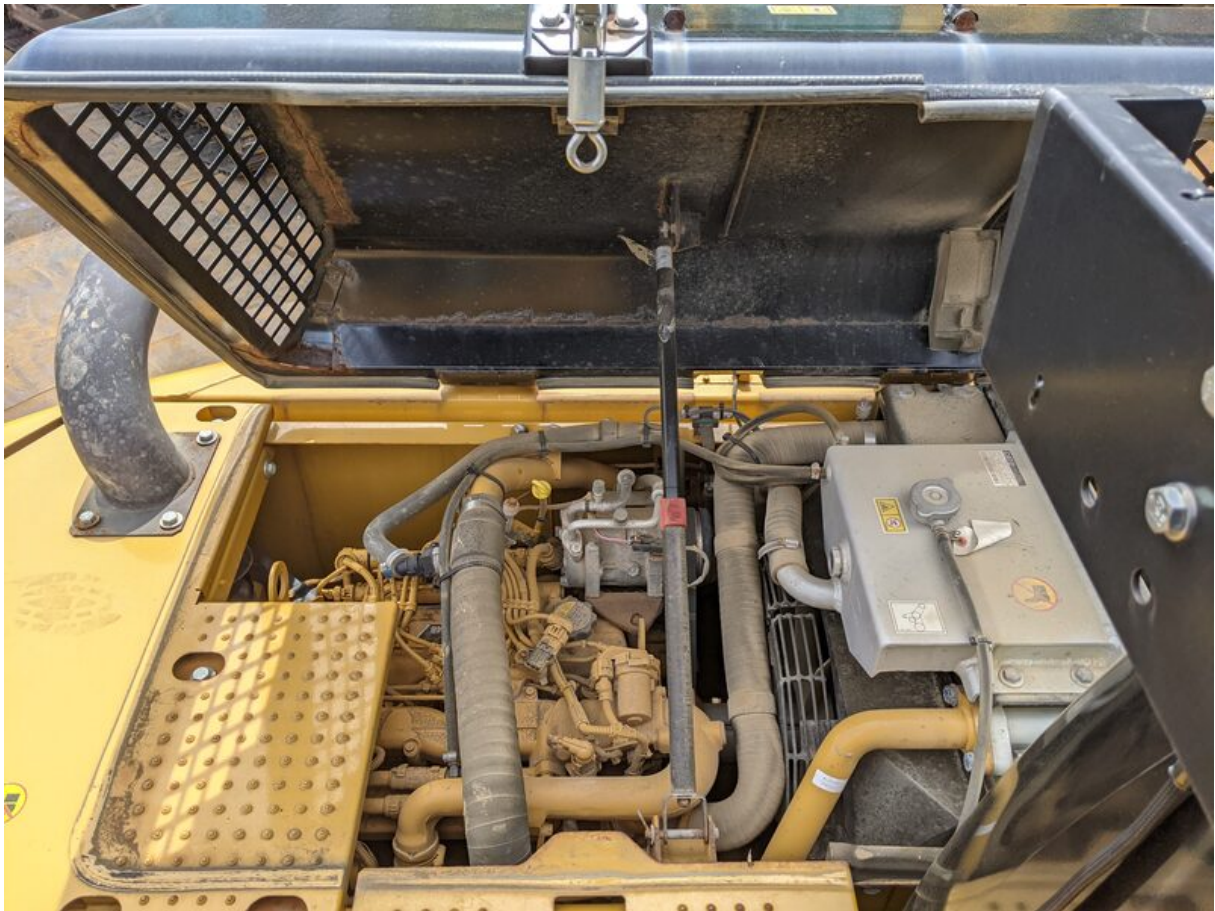


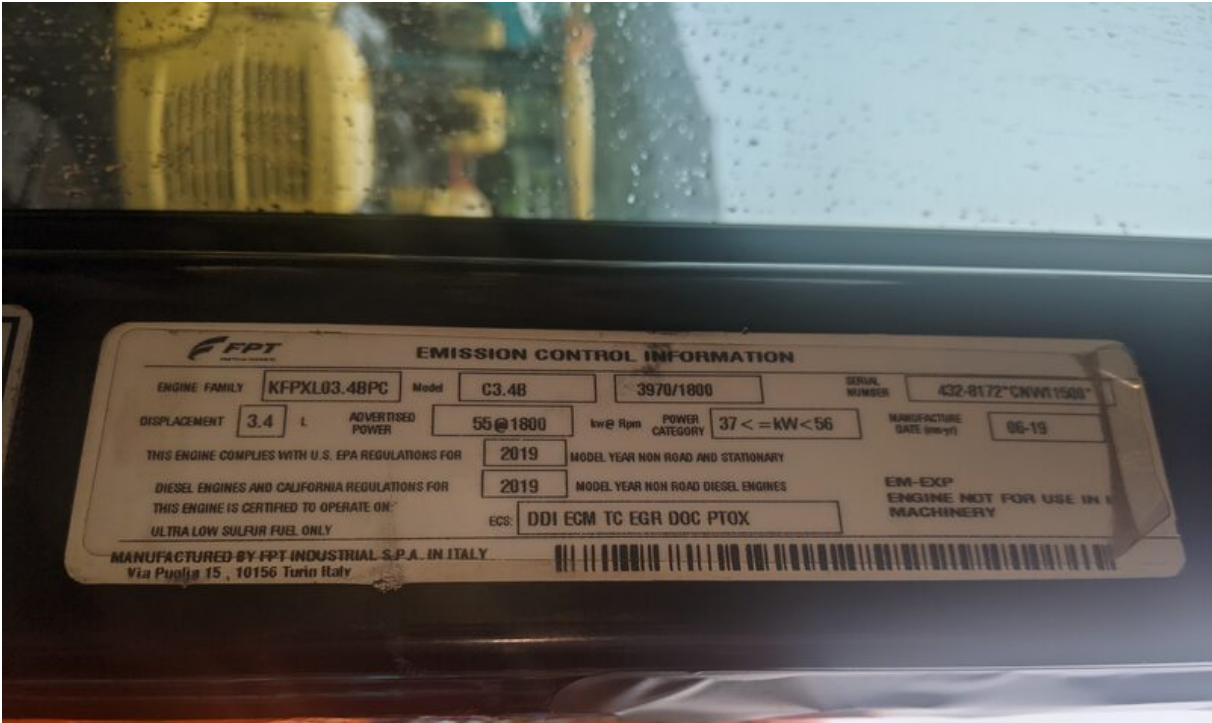












FPT		EMISSION CONTROL INFORMATION			
ENGINE FAMILY	KFPXL03.4BPC	Model	C3.4B	3970/1800	SERIAL NUMBER 432-8172*CNW1500*
DISPLACEMENT	3.4 L	ADVERTISED POWER	55@1800	kw@ Rpm	POWER CATEGORY 37 < = kW < 56
THIS ENGINE COMPLIES WITH U.S. EPA REGULATIONS FOR		2019	MODEL YEAR NON ROAD AND STATIONARY		
DIESEL ENGINES AND CALIFORNIA REGULATIONS FOR		2019	MODEL YEAR NON ROAD DIESEL ENGINES		
THIS ENGINE IS CERTIFIED TO OPERATE ON:		ECS: DDI ECM TC EGR DOC PTOX			EM-EXP ENGINE NOT FOR USE IN MACHINERY
ULTRA LOW SULFUR FUEL ONLY					
MANUFACTURED BY FPT INDUSTRIAL S.P.A. IN ITALY				Via Puollia 15 , 10156 Turin Italy	



FPT		EMISSION CONTROL INFORMATION			
ENGINE FAMILY	KFPXL03.4BPC	Model	C3.4B	3970/1800	SERIAL NUMBER 432-8172*CNW1500*
DISPLACEMENT	3.4 L	ADVERTISED POWER	55@1800	kw@ Rpm	POWER CATEGORY 37 < = kW < 56
THIS ENGINE COMPLIES WITH U.S. EPA REGULATIONS FOR		2019	MODEL YEAR NON ROAD AND STATIONARY		
DIESEL ENGINES AND CALIFORNIA REGULATIONS FOR		2019	MODEL YEAR NON ROAD DIESEL ENGINES		
THIS ENGINE IS CERTIFIED TO OPERATE ON:		ECS: DDI ECM TC EGR DOC PTOX			EM-EXP ENGINE NOT FOR USE IN MACHINERY
ULTRA LOW SULFUR FUEL ONLY					
MANUFACTURED BY FPT INDUSTRIAL S.P.A. IN ITALY				Via Puollia 15 , 10156 Turin Italy	

