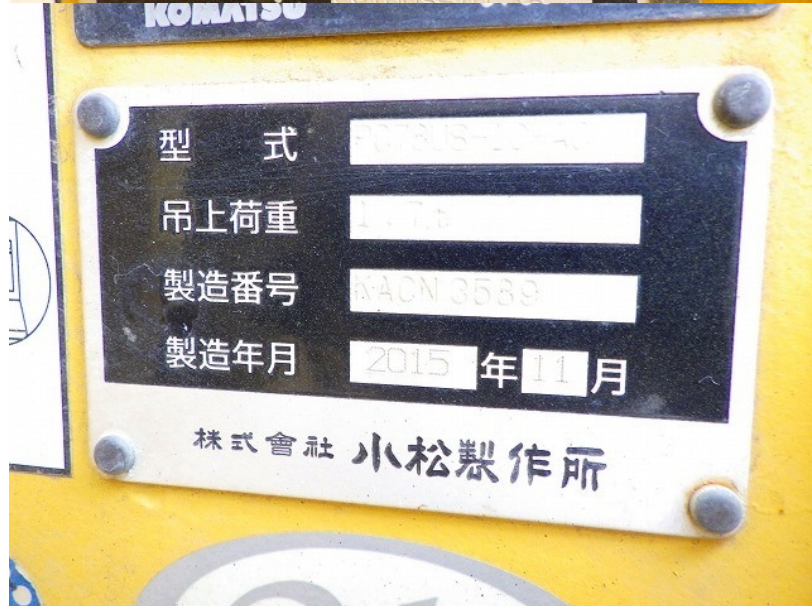


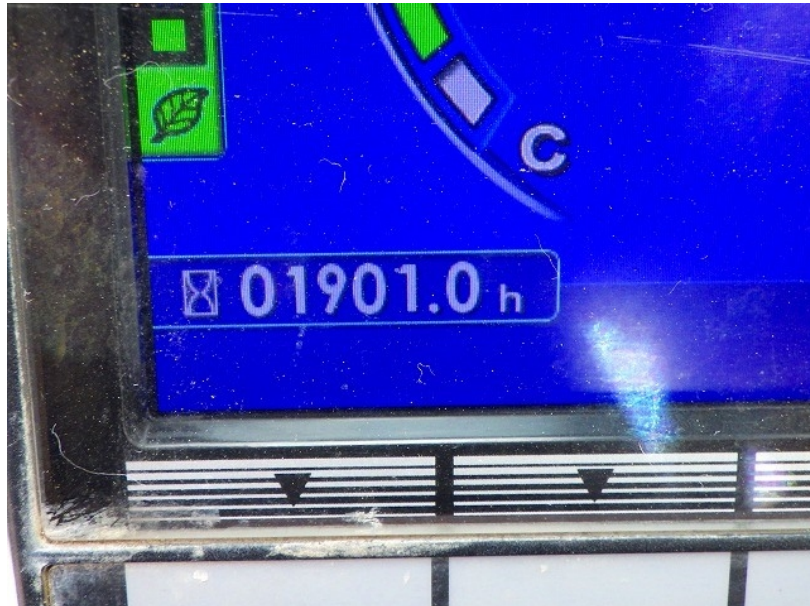
Model PC78US-10
Year 2015

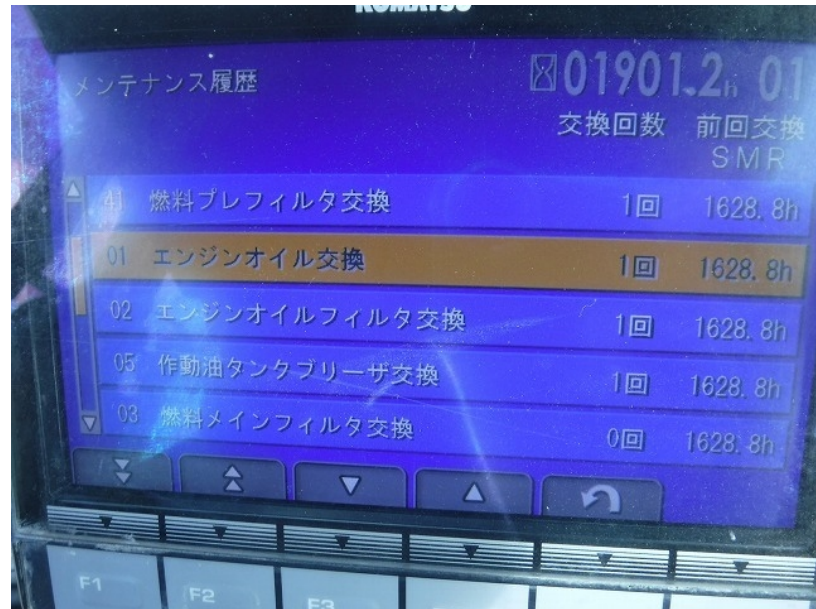
Serial 31063
Hours 1901

Photos taken at Jul. 02, 2024













EMISSION CONTROL INFORMATION
This engine complies with U.S. EPA and California Regulations for 2015 nonroad diesel engines. This engine is certified to operate on ultra low sulfur fuel only.
WARNING Injury may result and warranty is voided if fuel rate, rpm or altitudes exceed published maximum values for this model and application

Engine Model	SAA4D95LE-6-C	ESN	711787
EPA Cert. Family			
European Approval No.	FKLXL03.3JDB		
Gross rated HP/kw		e11#97/68PA#2012/46#2754#01	
Low idle RPM	1175 RPM	68 / 51	at 1950rpm
Firing order	1-2-4-3		Displacement 3.26m³
Fuel rate at rated			Power
Valve lash			

EMISSION CONTROL INFORMATION
 This engine complies with U.S. EPA and California Regulations for 2015 nonroad diesel engines. This engine is certified to operate on ultra low sulfur fuel only.
WARNING Injury may result and warranty is voided if fuel rate, rpm or altitudes exceed published maximum values for this model and application

Engine Model	SAA4D95LE-6-C	ESN	711787
EPA Cert. Family	FKLXL03.3JDB		
European Approval No.	e11*97/68PA*2012/46*2754*01		
Gross rated HP/kw	68 / 51	at 1950rpm	
Low idle RPM	1175	RPM	
Firing order	1-2-4-3	Displacement	3.261Liters
Fuel rate at rated		Power category	37skW<56
Valve lash cold		HP/kW	59 mm3/st
Timing-TDC	deg. BTDC	IN.	0.35mm
Emission Control System	EM, TC, CAC, EGR, ECM, OC, DF1	EX.	0.50mm
Date of manufacture	20151103	4C13	

KOMATSU
 平成 27
 Made

