

Model PC78US-10

Serial 31063

Year 2015

Hours 1901

Photos taken at Jul. 02, 2024





MODEL PC78US-10
SERIAL No. 31063
MANUFACT. MONTH/YEAR 11/2015

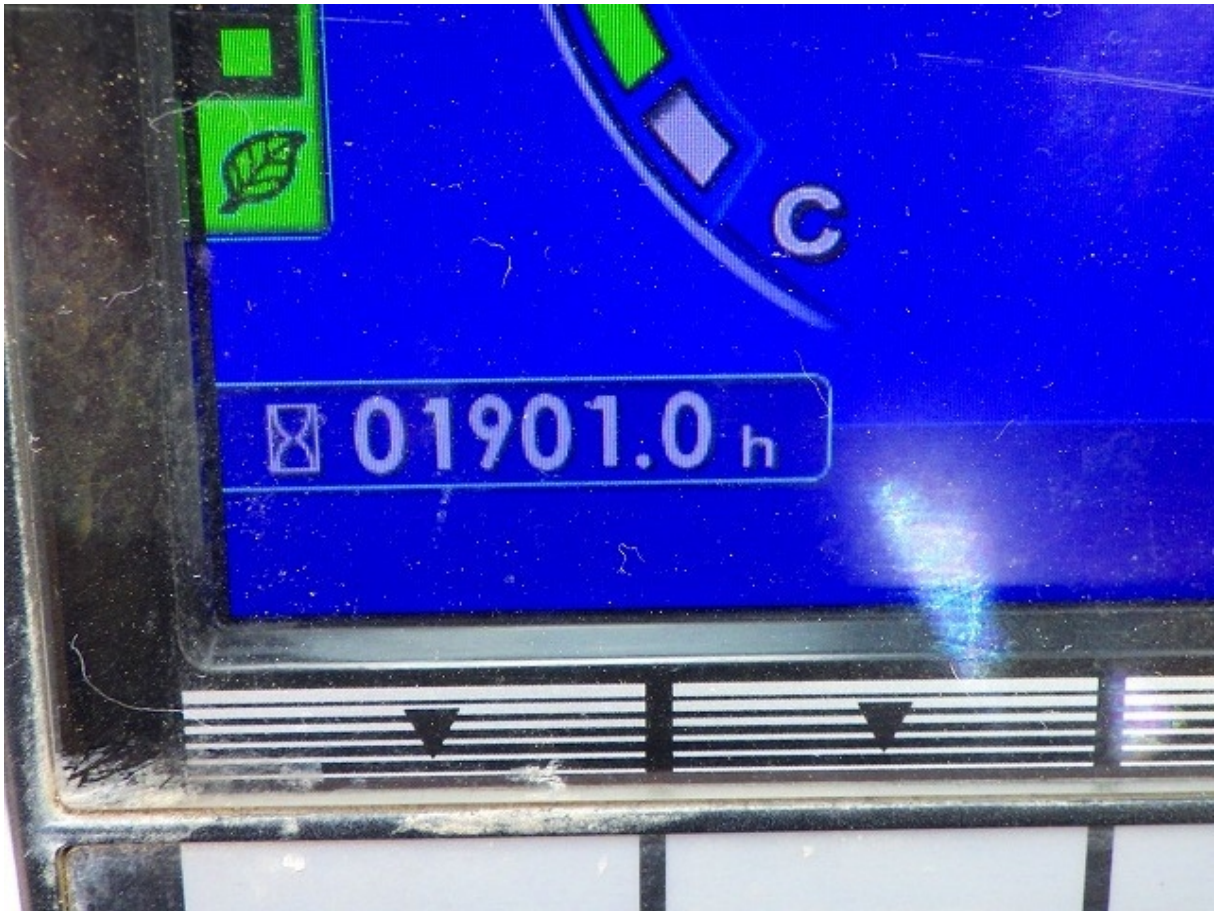
Product Identification Number
KMTPC258LFA031063

MANUFACTURER
Komatsu Ltd., Tokyo, Japan
KOMATSU 09601-14000

型 式 PC78US-10











メンテナンス履歴

01901.2h 01

	交換回数	前回交換 SMR
41 燃料プレフィルタ交換	1回	1628.8h
01 エンジンオイル交換	1回	1628.8h
02 エンジンオイルフィルタ交換	1回	1628.8h
05 作動油タンクブリーザ交換	1回	1628.8h
03 燃料メインフィルタ交換	0回	1628.8h

F1 F2 F3

The maintenance history screen has a blue background. At the top left is the title 'メンテナンス履歴'. At the top right, it shows '01901.2h 01'. Below this is a table with three columns: a description of the maintenance item, the number of times it has been performed ('交換回数'), and the last time it was performed ('前回交換 SMR'). The table lists five items, with the first four having been performed once at 1628.8 hours, and the fifth having not been performed yet. Navigation arrows are visible at the bottom of the screen.











EMISSION CONTROL INFORMATION
This engine complies with U.S. EPA and California Regulations for 2015 nonroad diesel engines. This engine is certified to operate on ultra low sulfur fuel only.
WARNING Injury may result and warranty is voided if fuel rate, rpm or altitudes exceed published maximum values for this model and application

Engine Model	SAA4D95LE-6-C	ESN	711787
EPA Cert. Family		FKLXL03.3JDB	
European Approval No.		e11*97/68PA*2012/46*2754*01	
Gross rated HP/kw		68 / 51	at 1950rpm
Low idle RPM	1175	Displacement	3.244
Firing order	1-2-4-3	Power	
Fuel rate at rated			
Valve lash			

EMISSION CONTROL INFORMATION

This engine complies with U.S. EPA and California Regulations for 2015 nonroad diesel engines. This engine is certified to operate on ultra low sulfur fuel only.

WARNING Injury may result and warranty is voided if fuel rate, rpm or altitudes exceed published maximum values for this model and application

Engine Model	SAA4D95LE-6-C	ESN	711787
EPA Cert. Family	FKLXL03.3JDB		
European Approval No.	e11*97/68PA*2012/46*2754*01		
Gross rated HP/kw	68 / 51 at 1950rpm		
Low Idle RPM	1175 RPM	Displacement	3.261Liters
Firing order	1-2-4-3	HP/kW	59 mm ³ /st 37≤kW<56
Fuel rate at rated		IN.	0.35mm
Valve lash cold (mm)		EX.	0.50mm
Timing-TDC	----deg. BTDC	Engine Code	4C13
Emission Control System	EM, TC, CAC, EGR, ECM, OC, DFI	Date of manufacture	20151103
Komatsu Ltd.		Made	

KOMATSU

平成 28



