

Model PC78US-10

Serial 31063

Year 2015

Hours 1901

Photos taken at Jul. 02, 2024





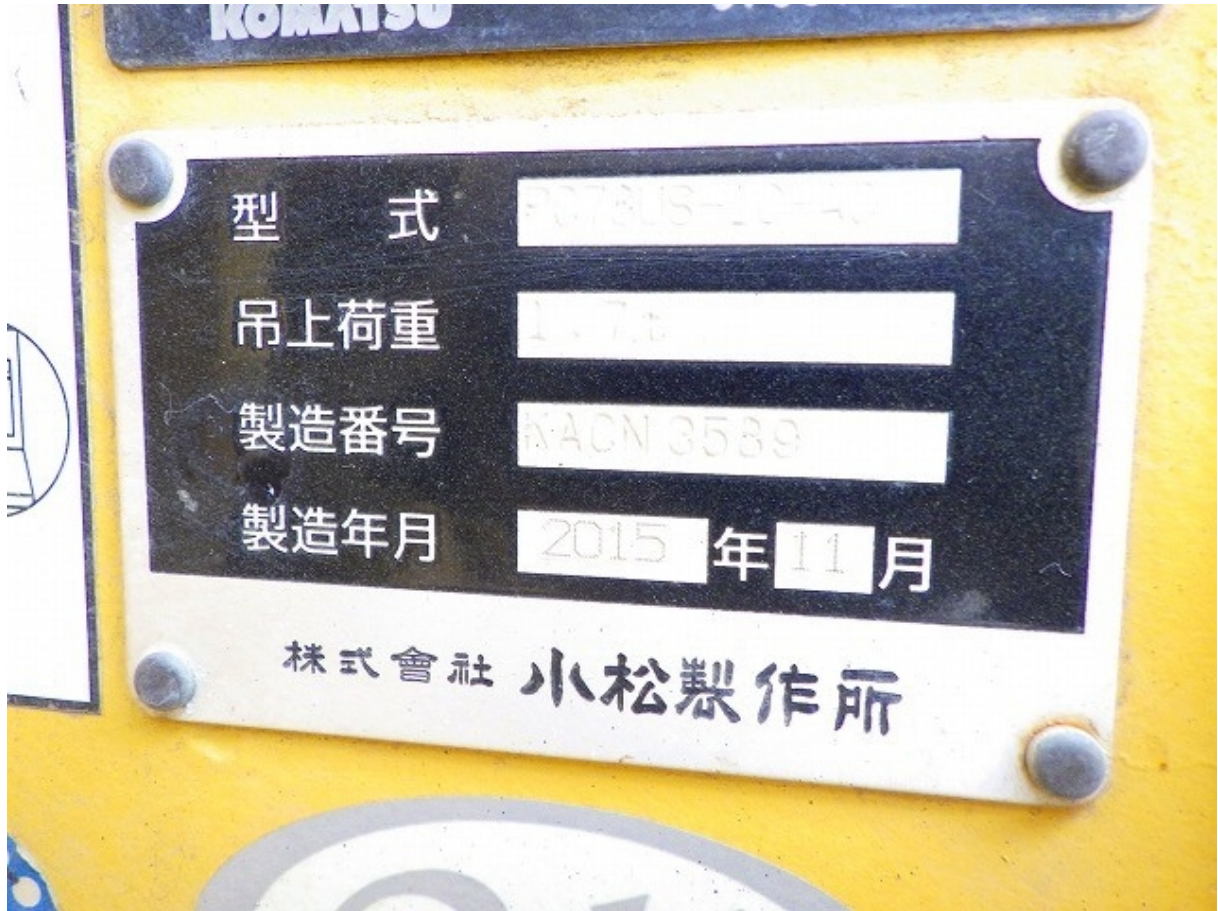
MODEL **PC78US-10**
SERIAL No. **31063**
MANUFACT. MONTH/YEAR **11/2015**

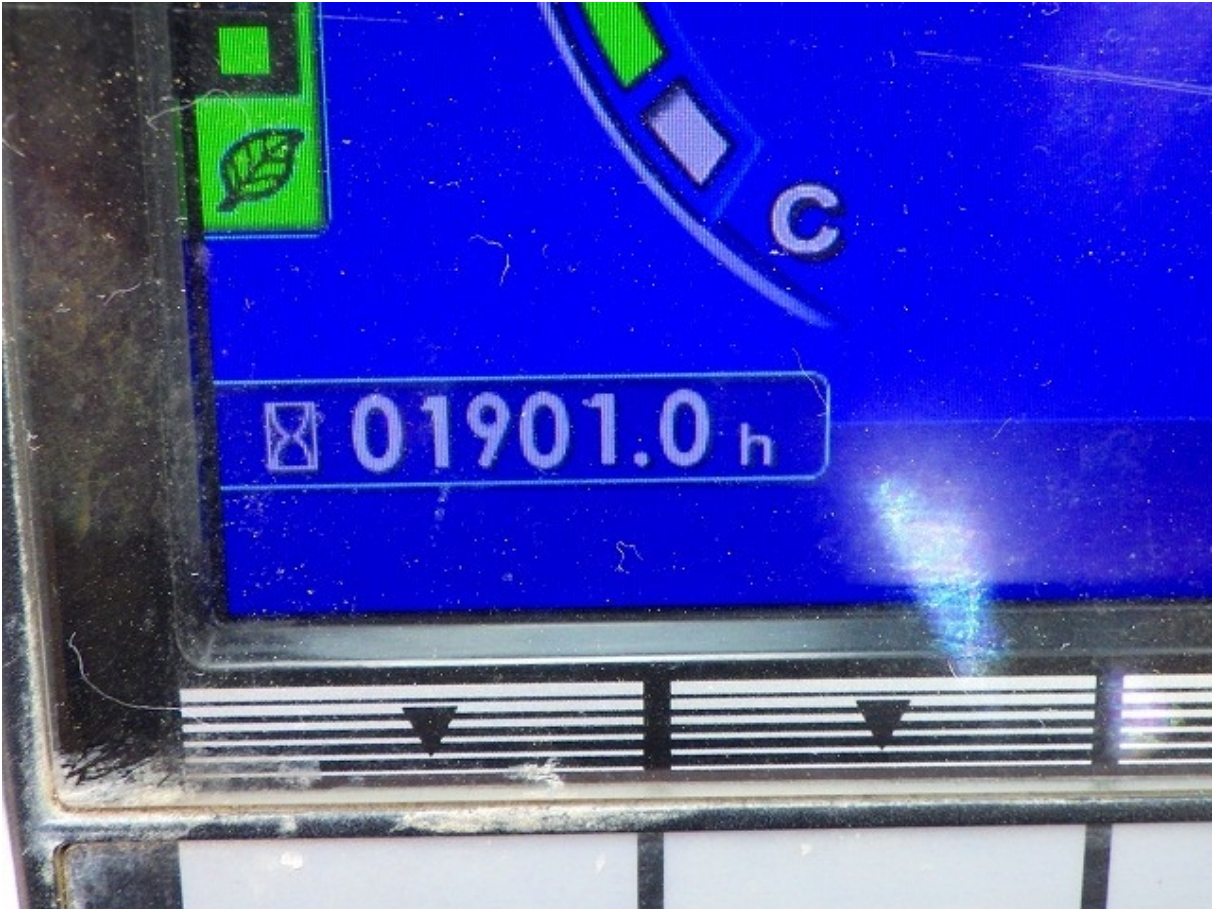
Product Identification Number
KMTPC258LFA031063

MANUFACTURER
Komatsu Ltd., Tokyo, Japan
KOMATSU 09601-14000

型 式 **PC78US-10**











メンテナンス履歴

01901.2h 01

	交換回数	前回交換 SMR
41 燃料プレフィルタ交換	1回	1628.8h
01 エンジンオイル交換	1回	1628.8h
02 エンジンオイルフィルタ交換	1回	1628.8h
05 作動油タンクブリーザ交換	1回	1628.8h
03 燃料メインフィルタ交換	0回	1628.8h

F1 F2 F3

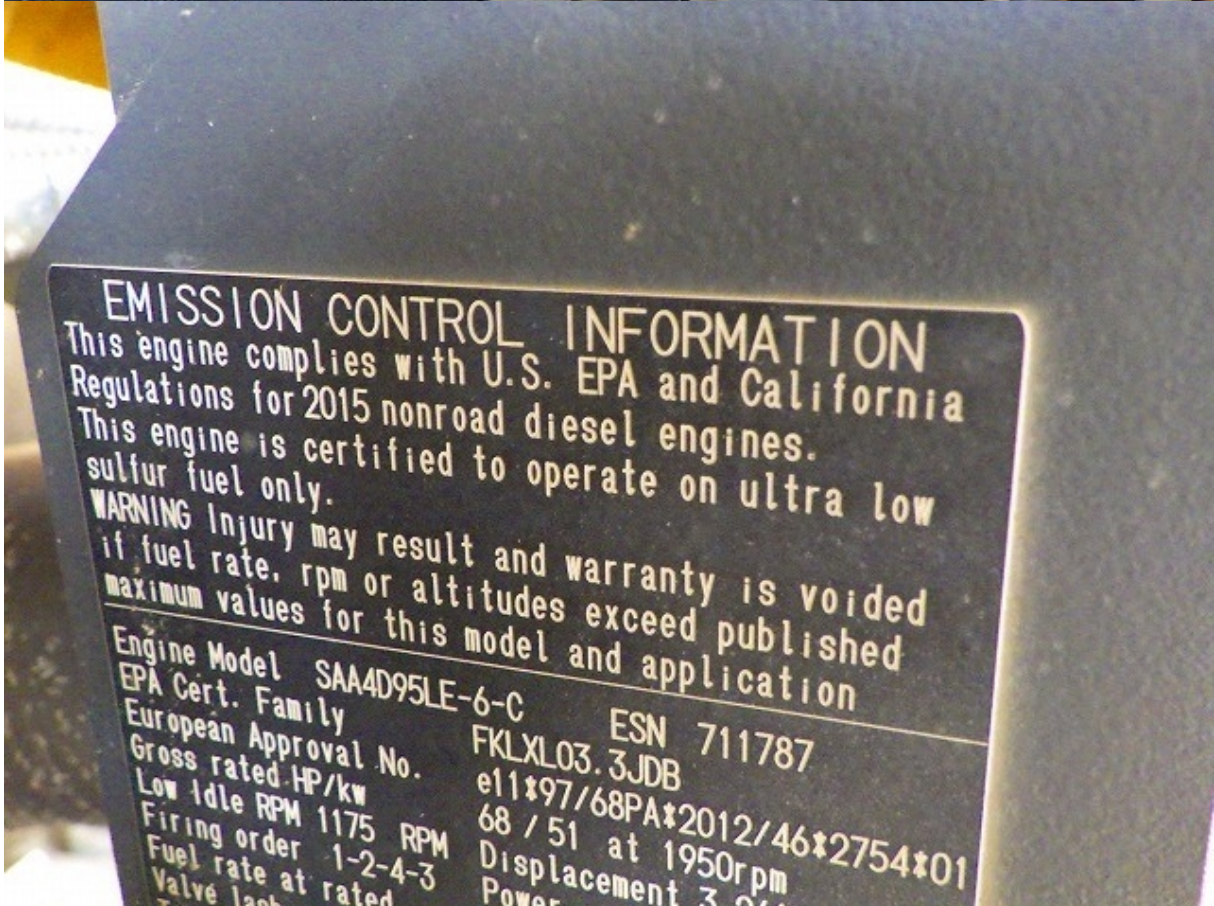
The screen displays a maintenance history list. At the top, it shows 'メンテナンス履歴' and a total of '01901.2h 01'. Below this is a table with three columns: maintenance item, exchange count, and previous exchange SMR. The items listed are fuel pre-filter, engine oil, engine oil filter, hydraulic tank breather, and fuel main filter. The exchange counts are 1 for most items and 0 for the fuel main filter. The previous exchange SMR for all items is 1628.8h. The screen also shows function keys F1, F2, and F3 at the bottom.











EMISSION CONTROL INFORMATION

This engine complies with U.S. EPA and California Regulations for 2015 nonroad diesel engines.

This engine is certified to operate on ultra low sulfur fuel only.

WARNING Injury may result and warranty is voided if fuel rate, rpm or altitudes exceed published maximum values for this model and application

Engine Model	SAA4D95LE-6-C	ESN	711787
EPA Cert. Family	FKLXL03.3JDB		
European Approval No.	e11*97/68PA*2012/46*2754*01		
Gross rated HP/kw	68 / 51 at 1950rpm		
Low Idle RPM	1175 RPM	Displacement	3.261Liters
Firing order	1-2-4-3	HP/kW	59 mm ³ /st 37≤kW<56
Fuel rate at rated		IN.	0.35mm
Valve lash cold (mm)		EX.	0.50mm
Timing-TDC	----deg. BTDC	Engine Code	4C13
Emission Control System:	EM, TC, CAC, EGR, ECM, OC, DFI	Date of manufacture	20151103
Komatsu Ltd.		Made	

KOMATSU

平成 28



