

Model MST-1500VDR

Serial 035208

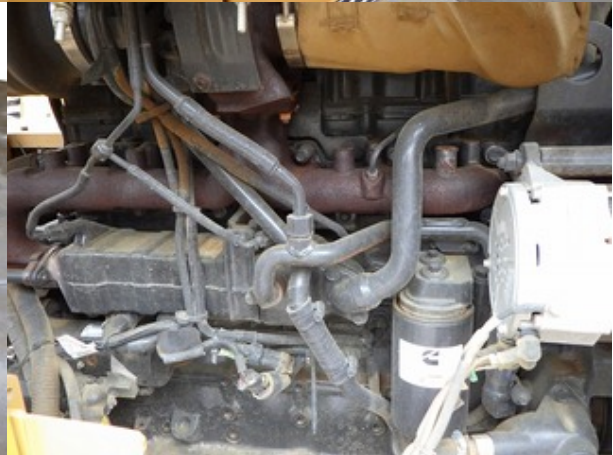
Year 2019

Hours 1710

Photos taken at Jun. 21, 2024







Ref. No. MST1500YDR 14F-K	Model QSB6.7	Fuel rate at adv. HP/kW Im3rate: 105
Advised HP/kW 225 / 168 at 2200 rpm	Family NCEX06 TAAX 1500/14 14F-K	
Timing I.D.C. ELECTRONIC	Category 130 - 560 kW IMC	
0.020 Exh. C.I./D/L 408 / 6.7	E.C.S. SCR.DOC.D01.TC PM	

FORMATION: THIS ENGINE COMPLIES WITH U.S. EPA AND CALIFORNIA REGULATIONS
EL ENGINES. ULTRA LOW SULFUR FUEL ONLY. DELEGATED ASSEMBLY. EM-EXE ENGINE
PORTABLE MACHINERY UNLESS PLACED ON THE MARKET BEFORE 1 JANUARY 2019.







