

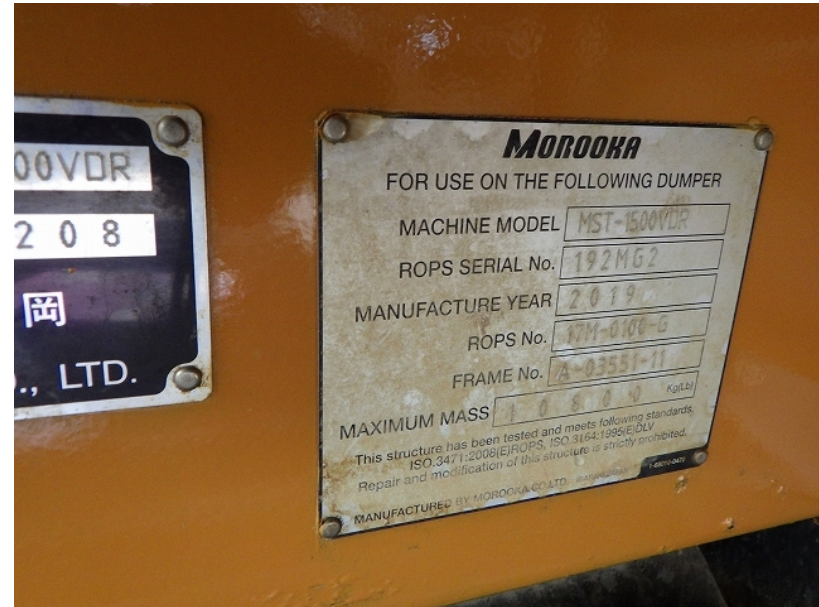
Model MST-1500VDR
Year 2019

Serial 035208
Hours 1710

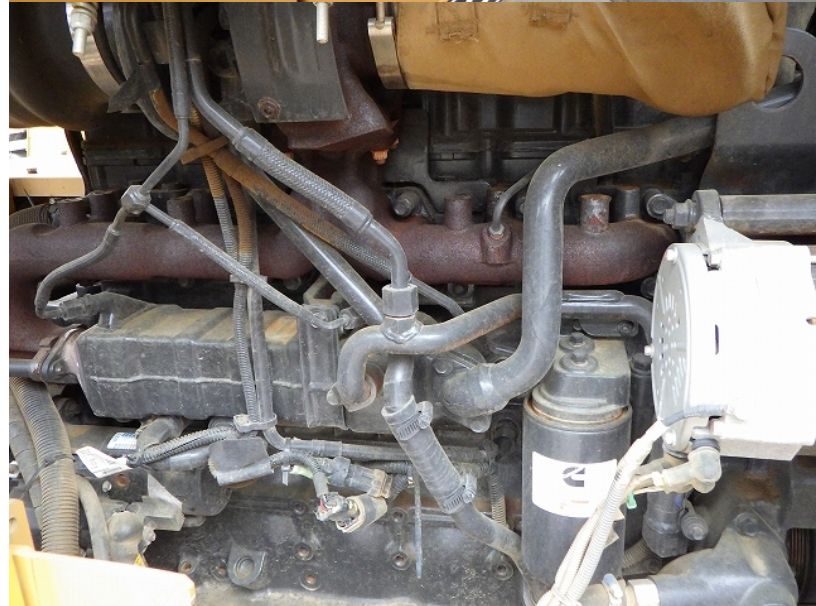
Photos taken at Jun. 21, 2024

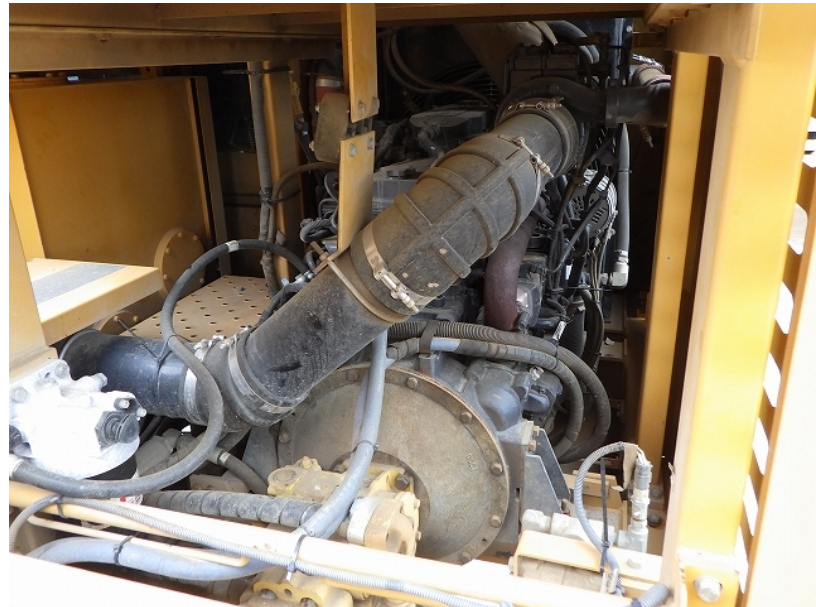
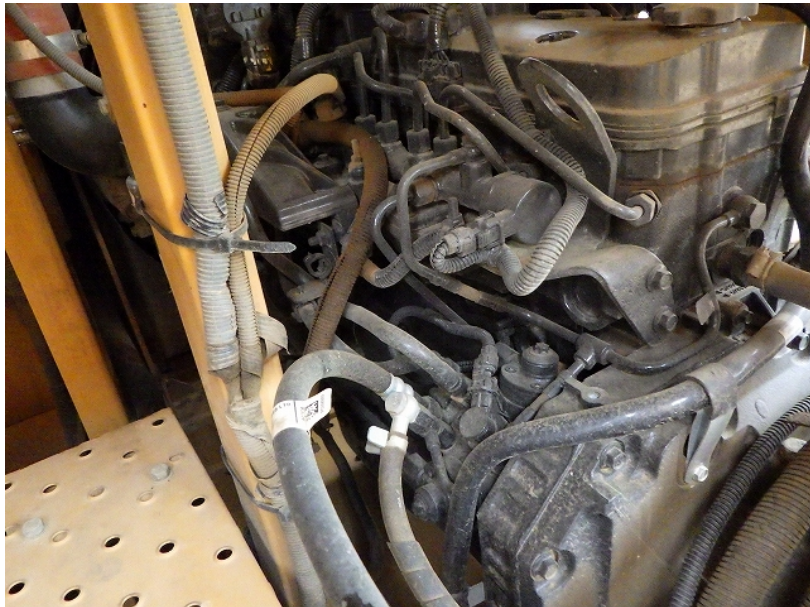












Rel. No. MST1500VDR-T4F-K	Model QSB6.7	Fuel Rate at adv. HP/kW (mm3/s) 103	EP03819
Advertised HP/kW 225 / 168 at 2200 rpm	Family NCEXL06.7AAK	STD/FL EPA	
Timing T.D.C. ELECTRONIC	Category 130 - 560 kW Nox		
0.020 Exh. C.I./D/L 408 / 6.7	E.C.S. SCR,DOC,DDI,TC	PM	

FORMATION: THIS ENGINE COMPLIES WITH U.S. EPA AND CALIFORNIA REGULATIONS FOR DIESEL ENGINES. ULTRA LOW SULFUR FUEL ONLY. DELEGATED ASSEMBLY. EM-EXP ENGINE. MOBILE MACHINERY UNLESS PLACED ON THE MARKET BEFORE 1 JANUARY 2019













