

Model EG40R-C

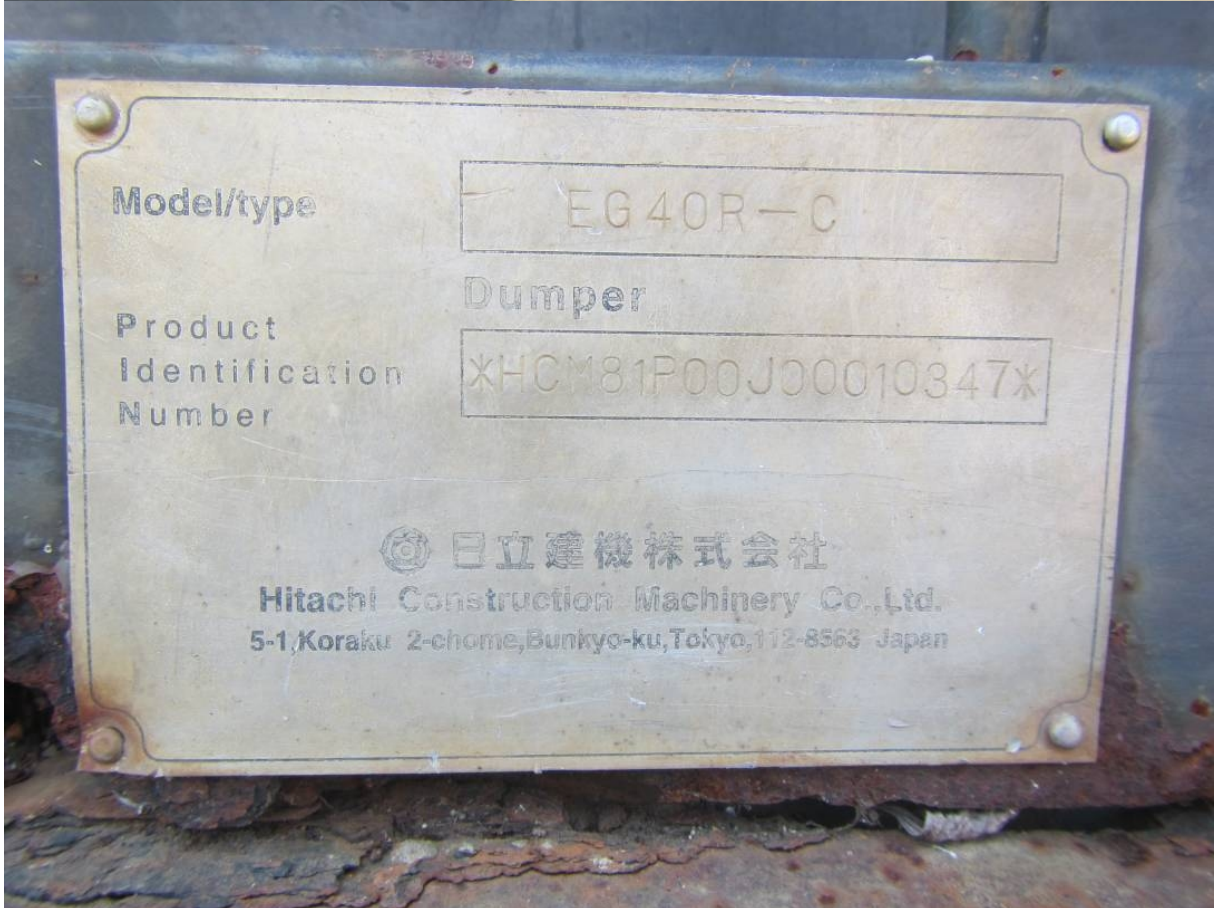
Serial HCM81P00J00010347

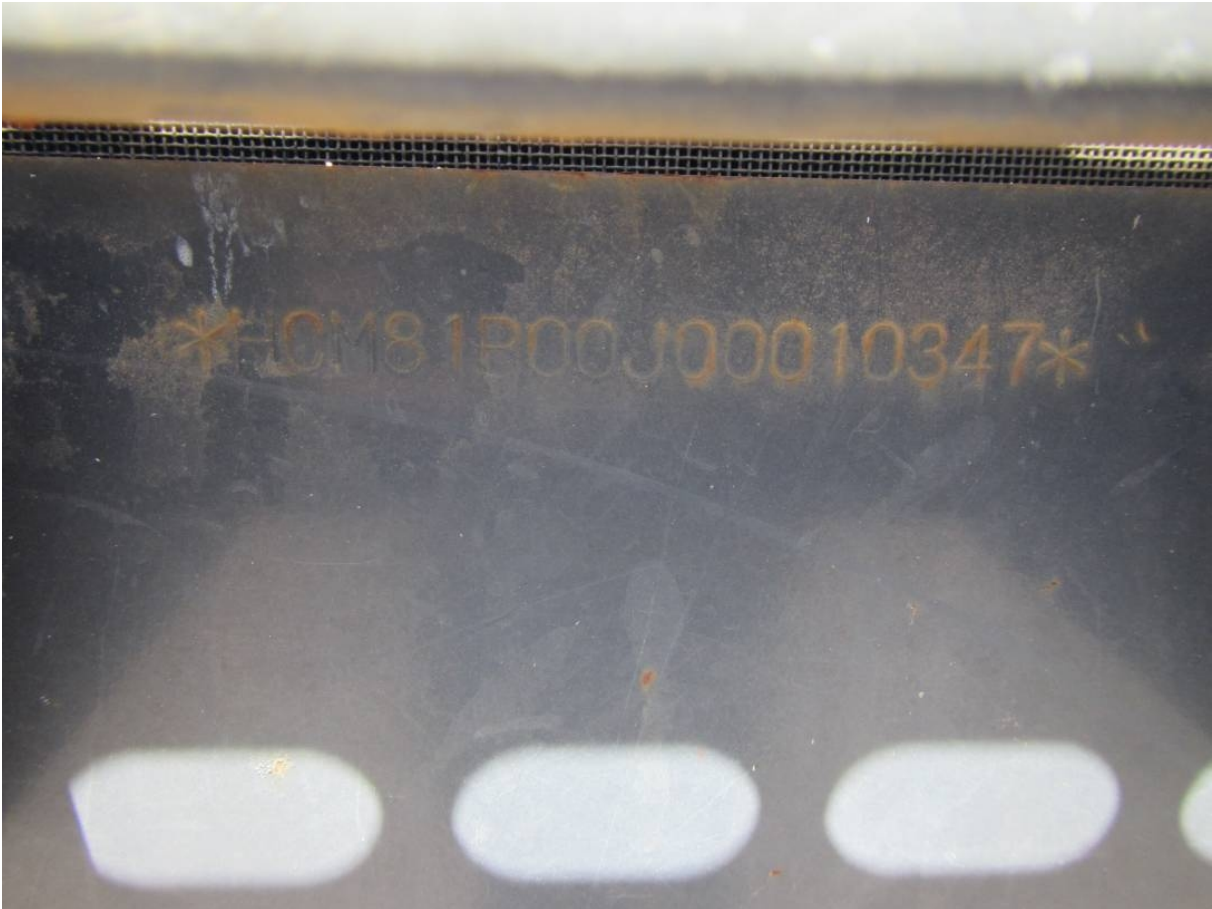
Year 2007

Hours 3532

Photos taken at Jun. 28, 2024













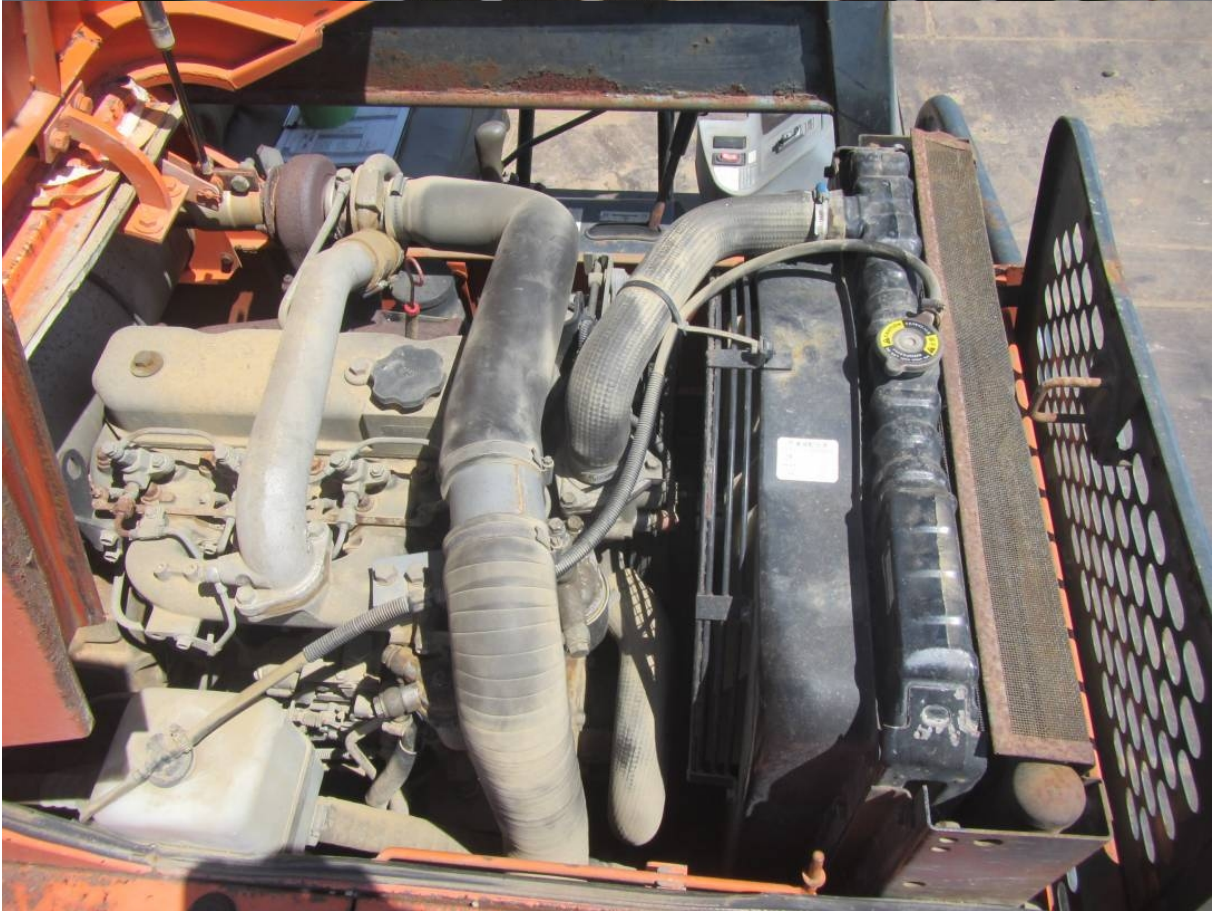




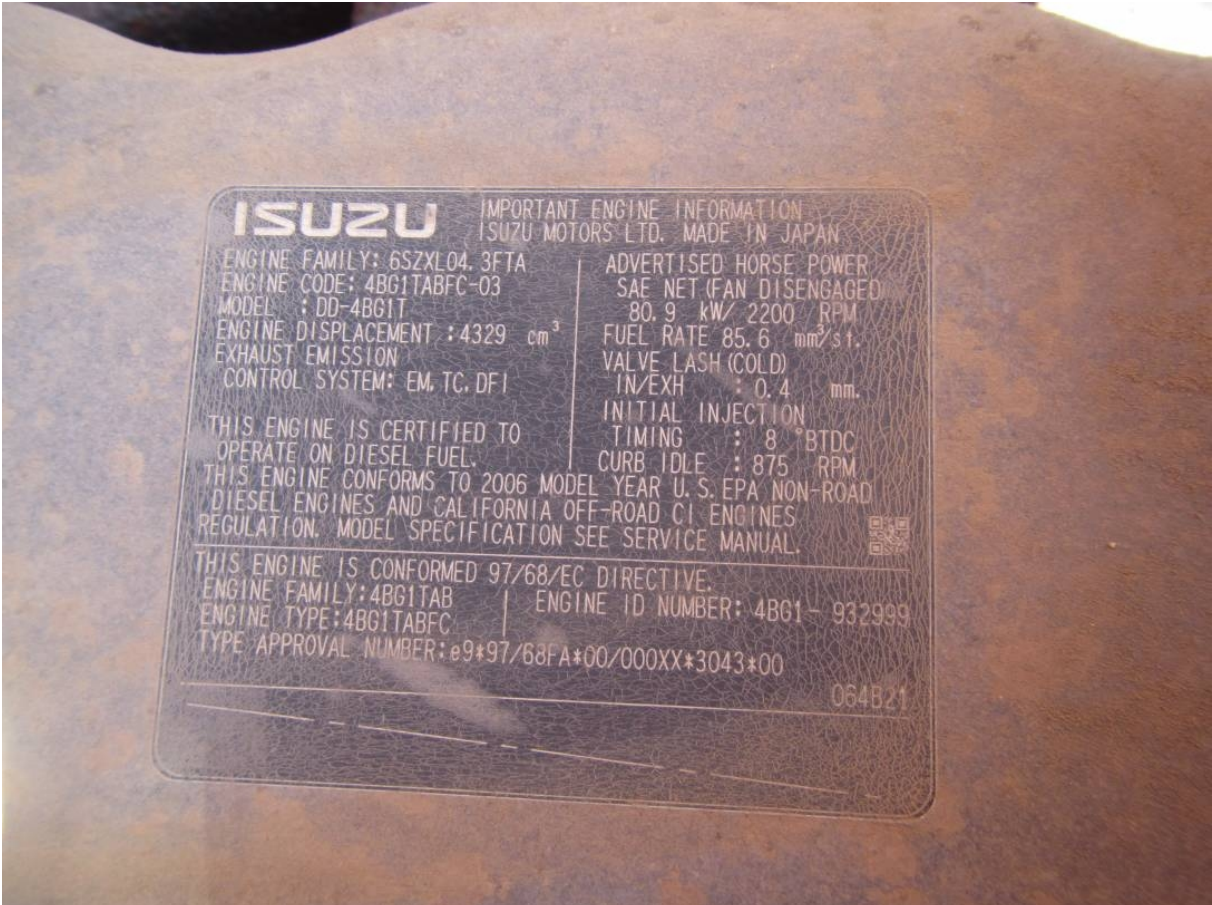












ISUZU

IMPORTANT ENGINE INFORMATION
ISUZU MOTORS LTD. MADE IN JAPAN

ENGINE FAMILY: 6SZXL04.3FTA
ENGINE CODE: 4BG1TABFC-03
MODEL : DD-4BG1T
ENGINE DISPLACEMENT : 4329 cm³
EXHAUST EMISSION
CONTROL SYSTEM: EM, TC, DFI

ADVERTISED HORSE POWER
SAE NET (FAN DISENGAGED)
80.9 kW/ 2200 RPM
FUEL RATE 85.6 mm³/s
VALVE LASH (COLD)
IN/EXH : 0.4 mm.
INITIAL INJECTION
TIMING : 8 °BTDC
CURB IDLE : 875 RPM

THIS ENGINE IS CERTIFIED TO
OPERATE ON DIESEL FUEL.
THIS ENGINE CONFORMS TO 2006 MODEL YEAR U.S. EPA NON-ROAD
DIESEL ENGINES AND CALIFORNIA OFF-ROAD CI ENGINES
REGULATION. MODEL SPECIFICATION SEE SERVICE MANUAL.



THIS ENGINE IS CONFORMED 97/68/EC DIRECTIVE.
ENGINE FAMILY: 4BG1TAB | ENGINE ID NUMBER: 4BG1- 932999
ENGINE TYPE: 4BG1TABFC
TYPE APPROVAL NUMBER: e9+97/68FA*00/000XX*3043*00

064B21





























