

Model SK235SRD-3

Serial YF07-03291

Year 2016

Hours 16263

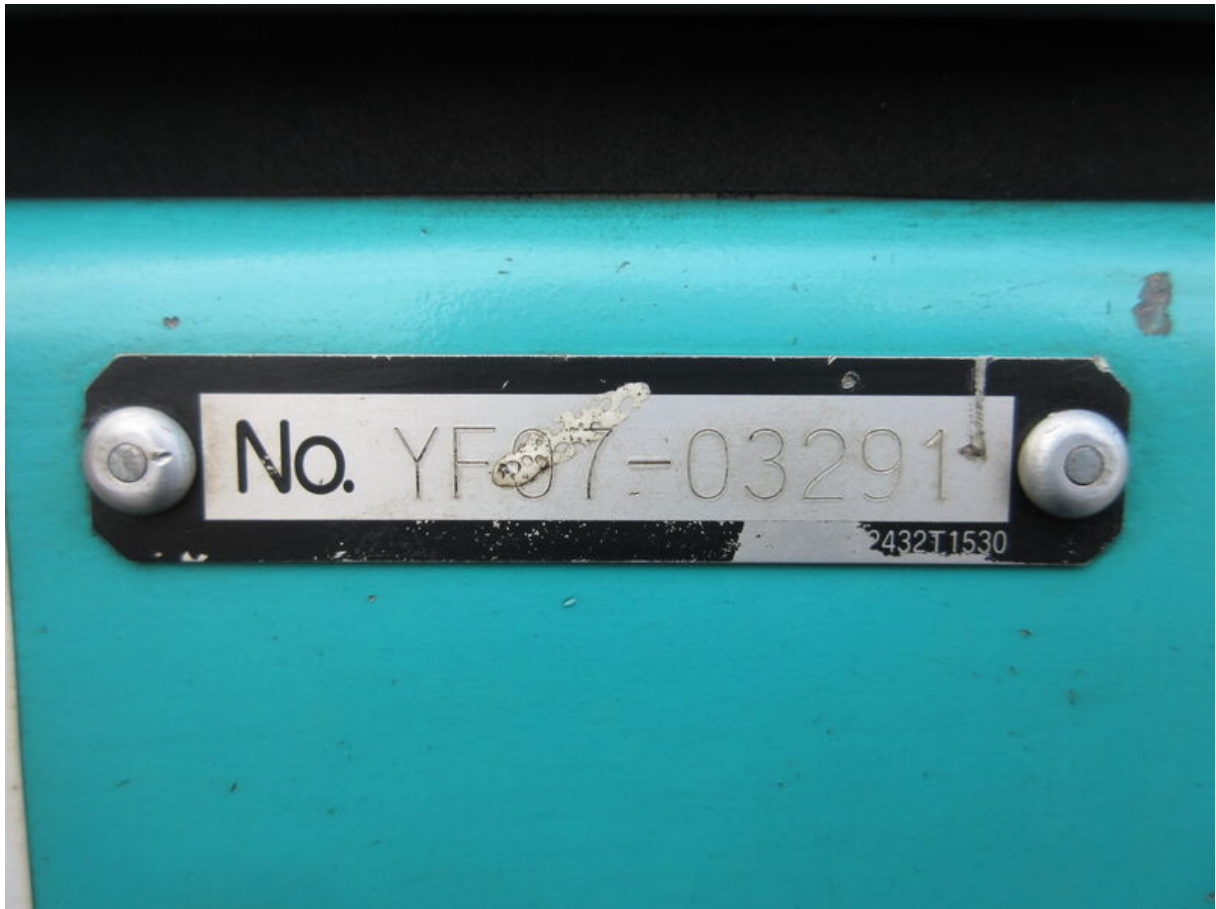
Photos taken at Oct. 16, 2023







SK23...-3 クランプアーム付			
車名及び型式	コベルコ WDR-YF07/YU07		
定格出力	117kW/2000min <sup>-1</sup>		
最高走行速度	5.5km/h		
仕様	2.4mアーム 5.65mブーム 増量ウェイト	2.94mアーム 5.65mブーム 増量ウェイト	労働安全衛生法に よる最も不利な仕様
シュー幅	600mm	600mm	600mm
機体質量	25100kg	27900kg	30300kg
機械質量	31000kg	34000kg	36700kg
機械総質量	32400kg	35300kg	38000kg
平均接地圧	76kPa	83kPa	90kPa
アタッチメント 装着可能質量	4300kg	3600kg	3600kg
・機械質量・機械総質量は先端アタッチメント質量を含む。			
コベルコ建機株式会社			
YF20T01366P1			



NO. 30 キカイ ショウホウ

アワメータ	16262
トリップ メータ	16253
ソウサ	4845
ソウコウ	52
センカイ	3242
ブレーカ	0
ハイリーチ	0
スタータ	4469

NO. 30 キカイ ショウホウ

アワメータ	16263
トリップ メータ	16253
ソウサ	4845
ソウコウ	52
センカイ	3242
ブレーカ	0
ハイリーチ	0
スタータ	4465













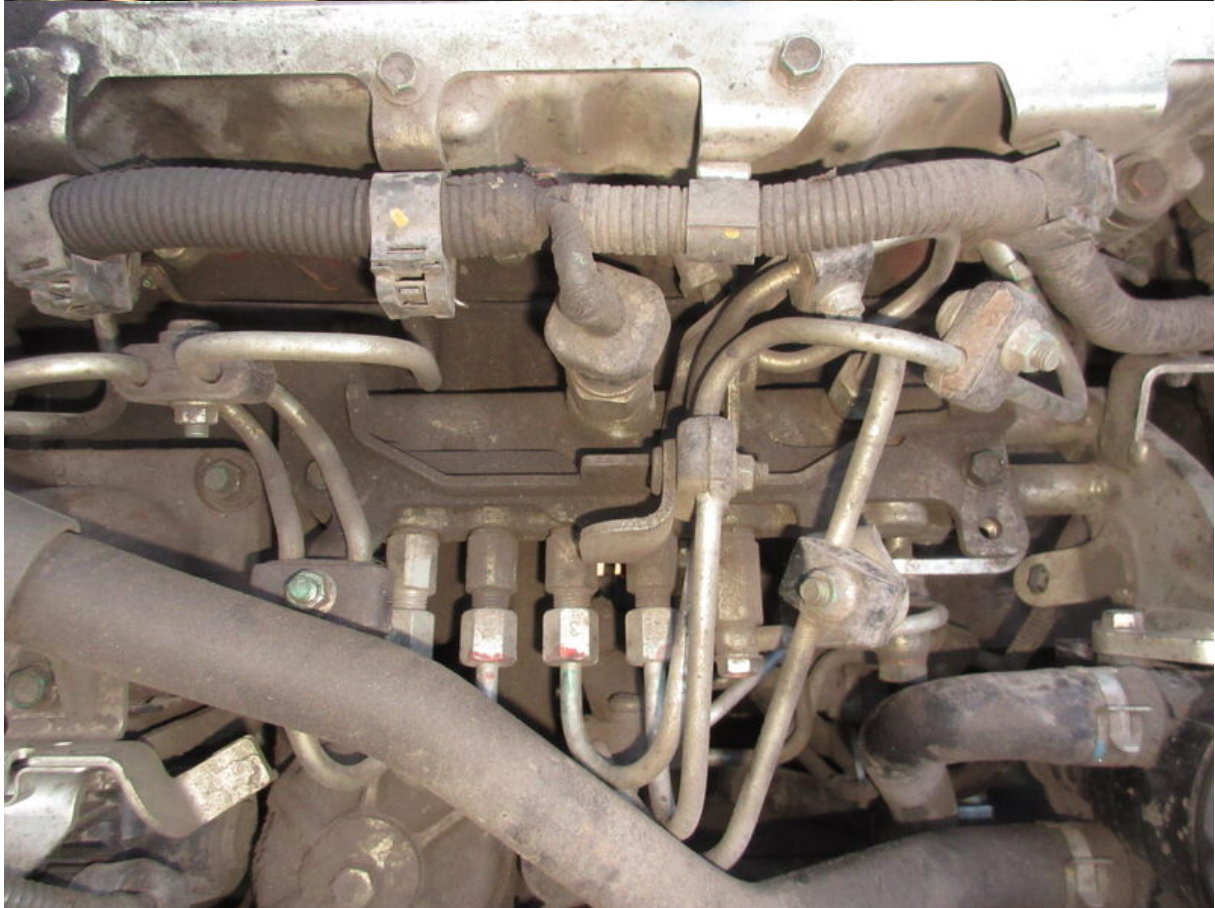




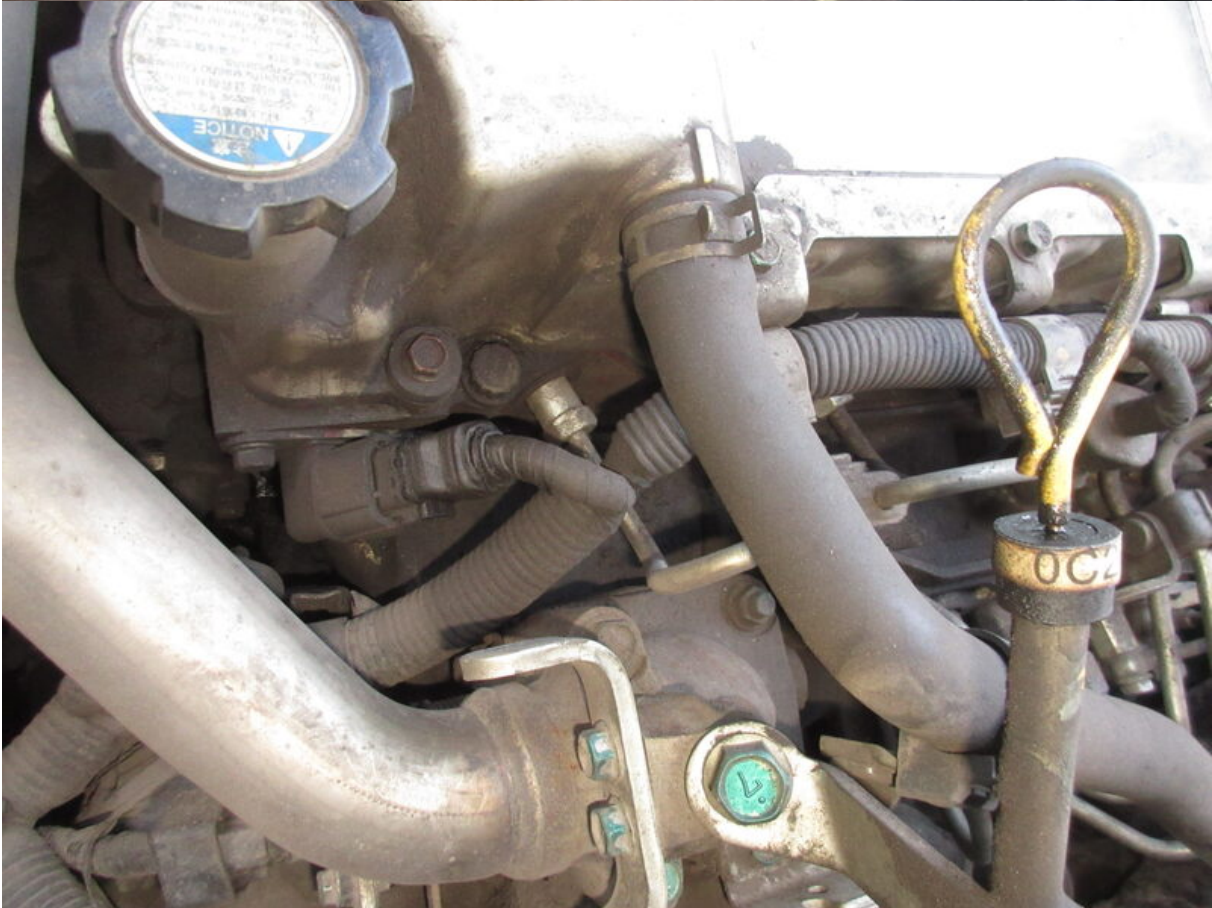
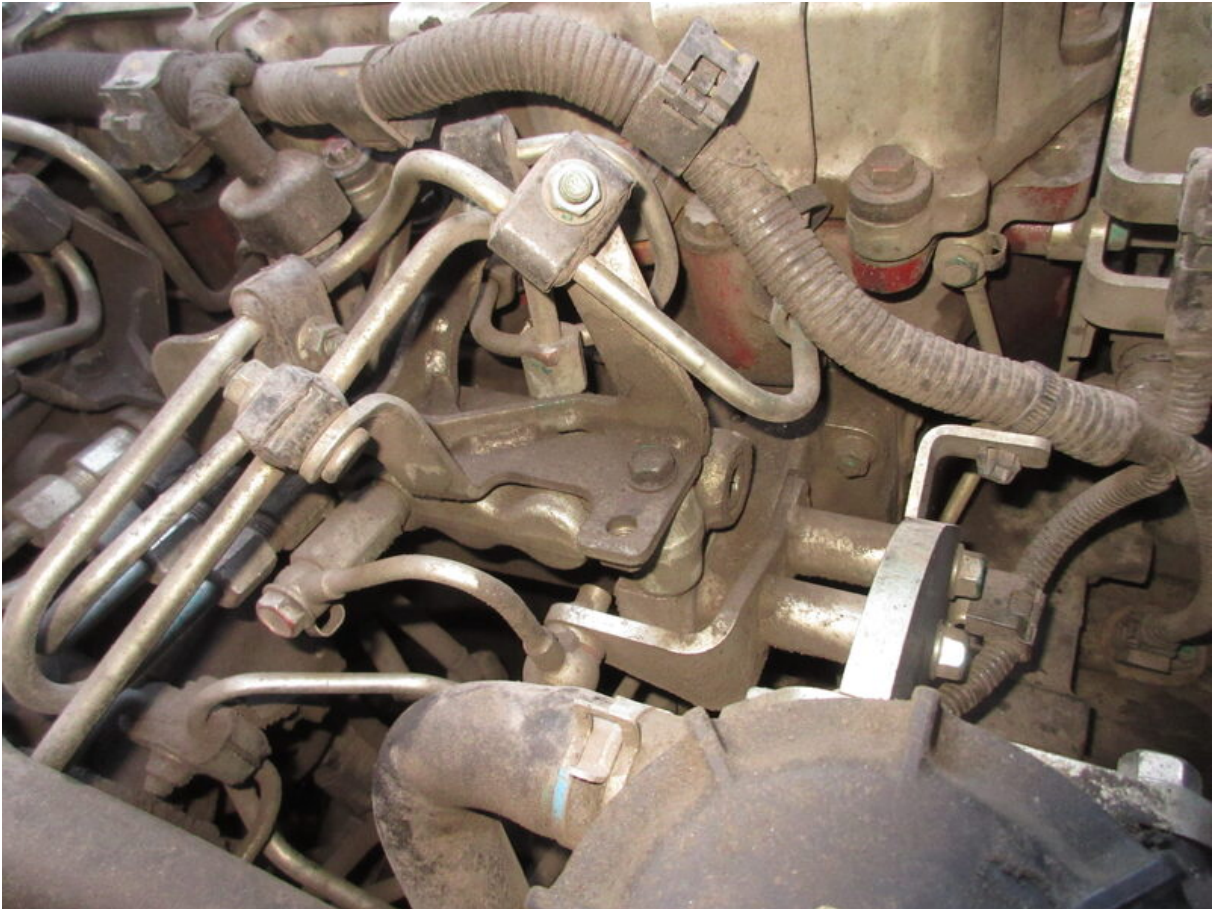


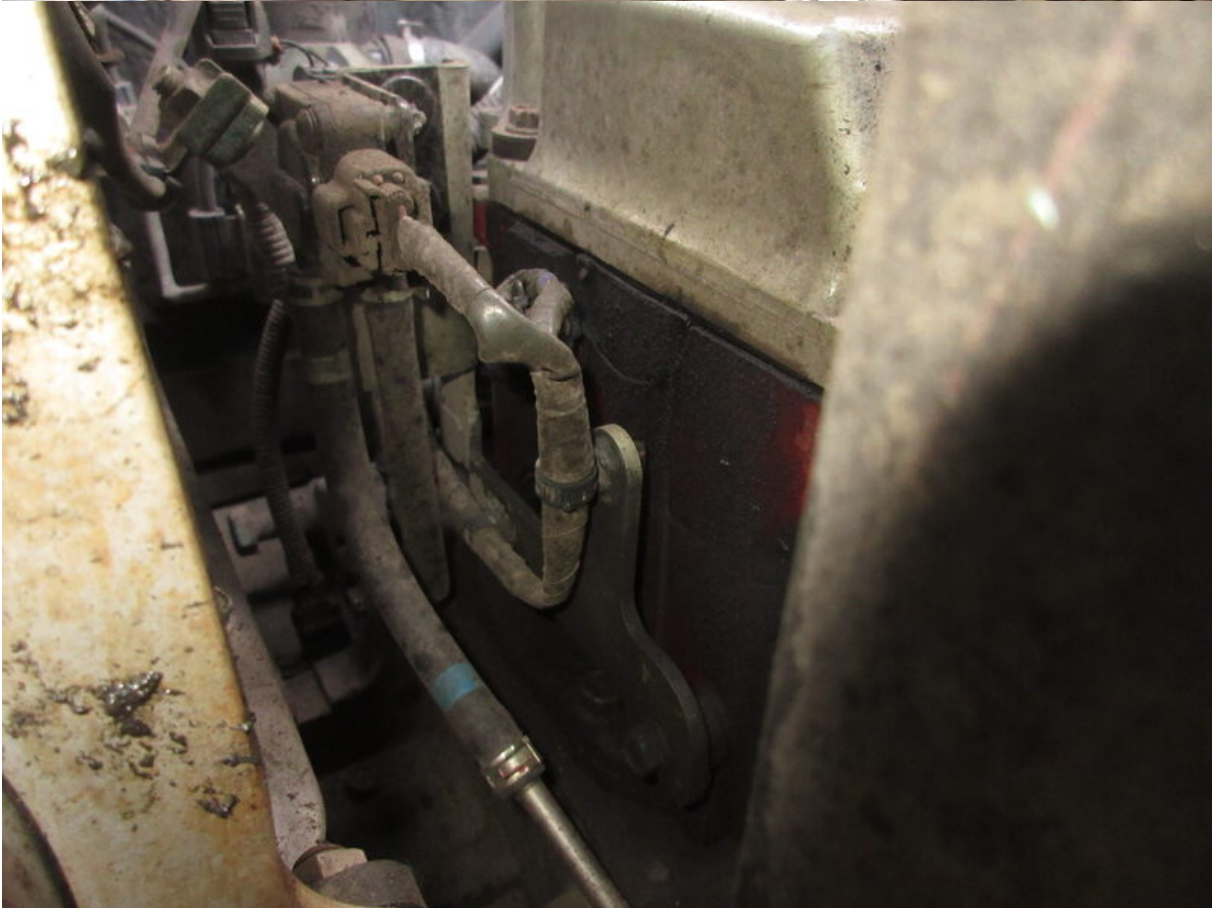


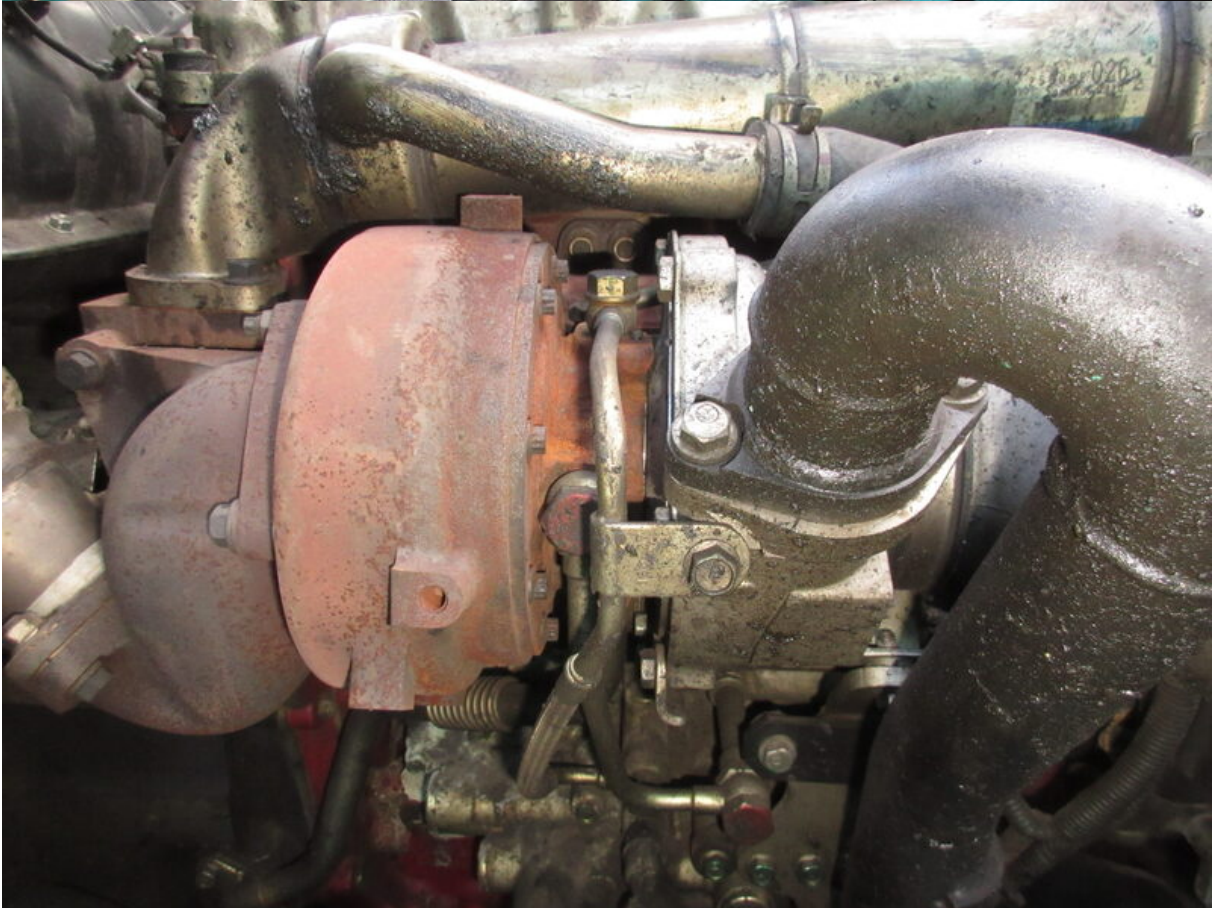
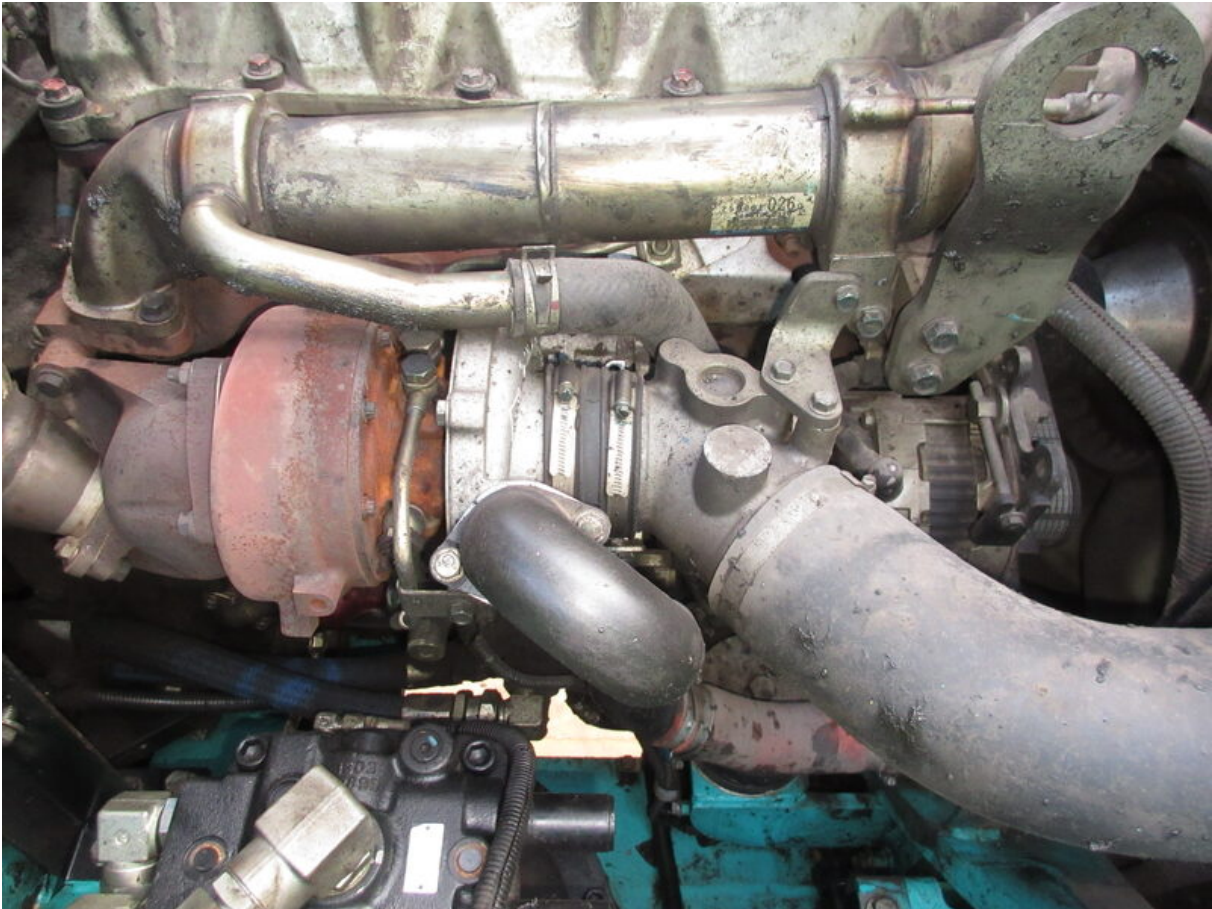


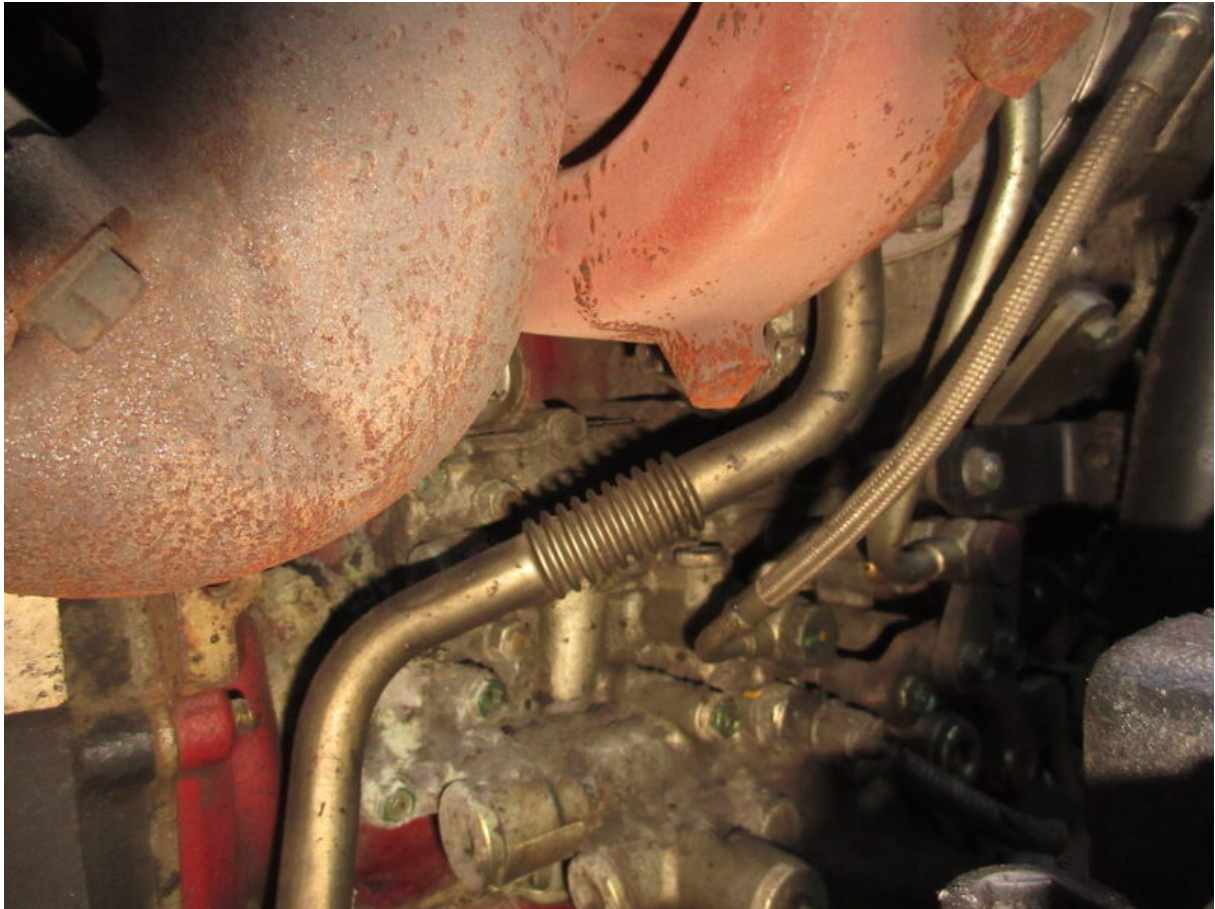


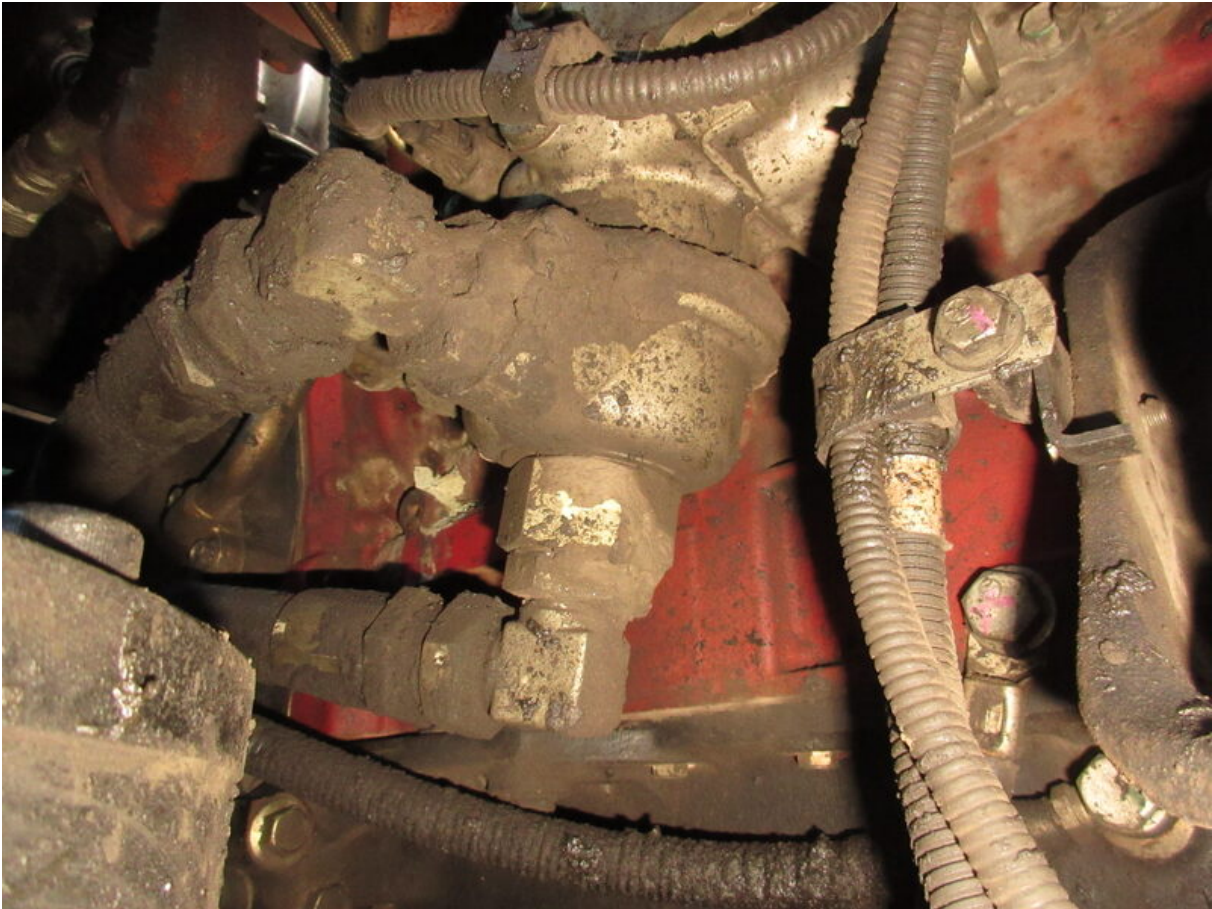


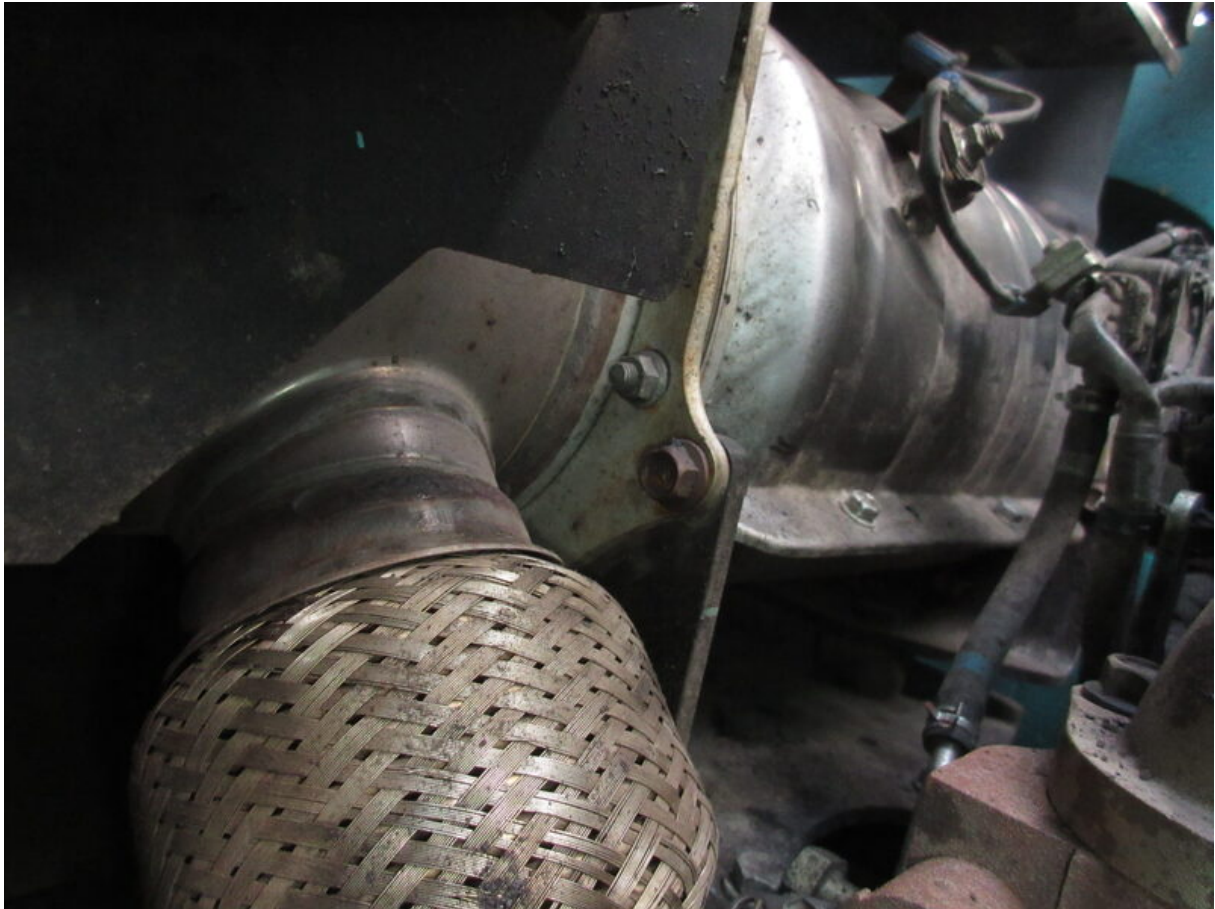








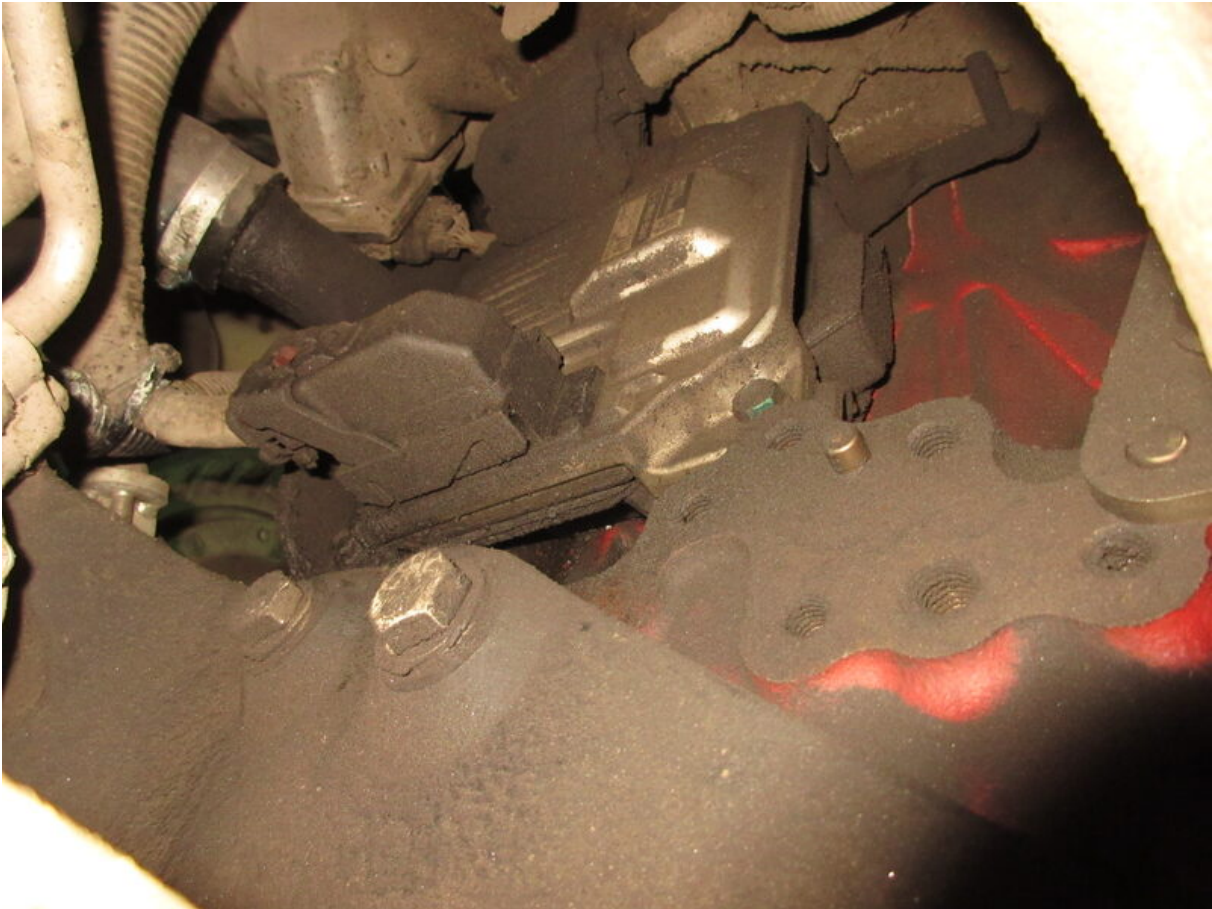




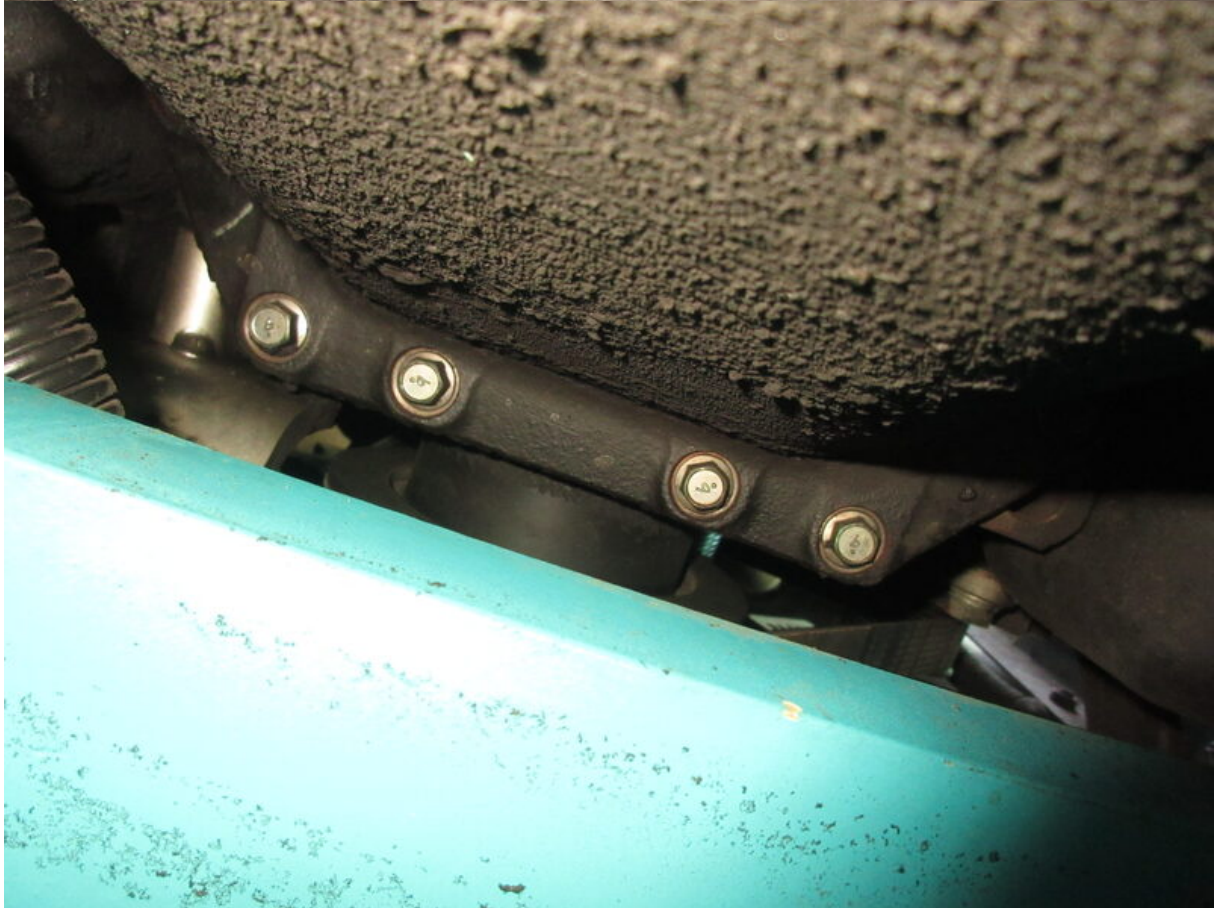


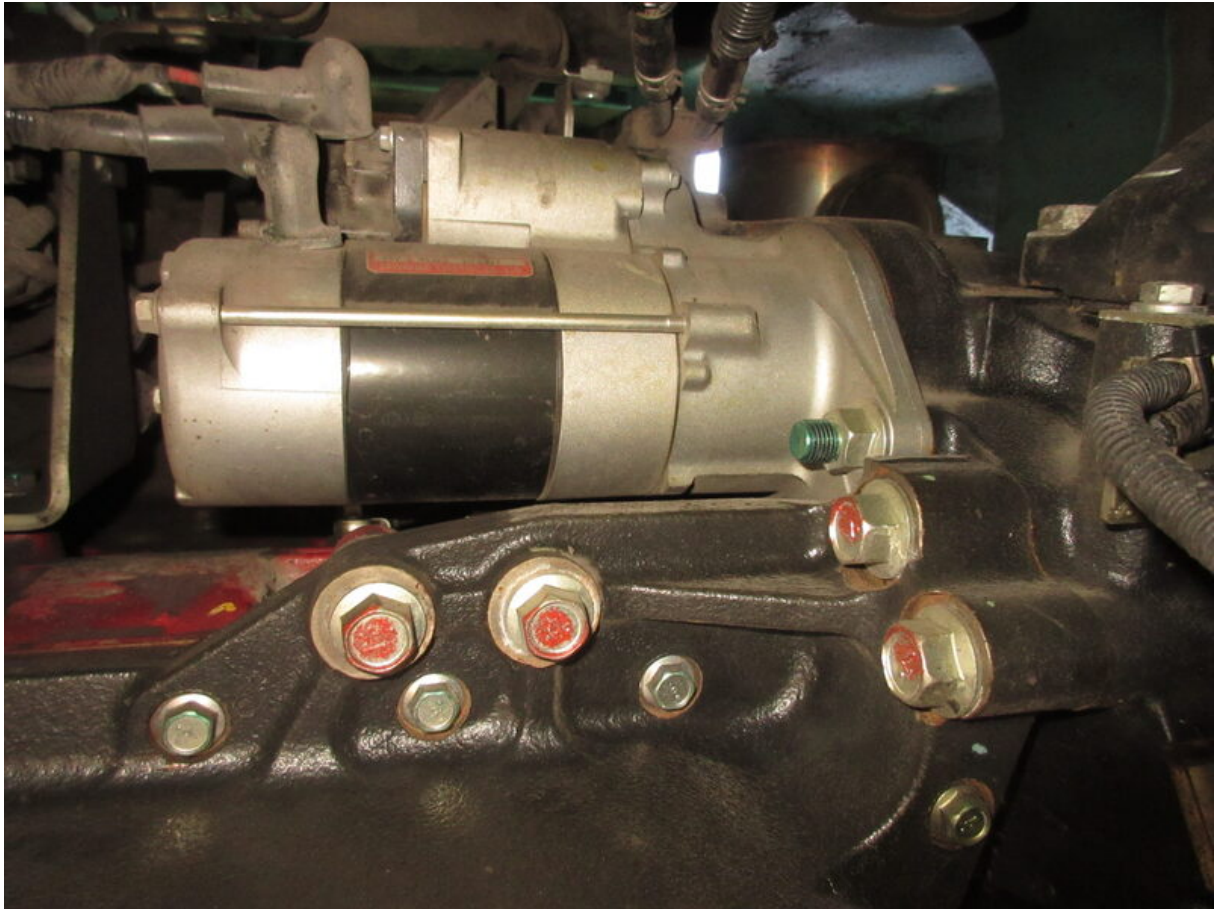




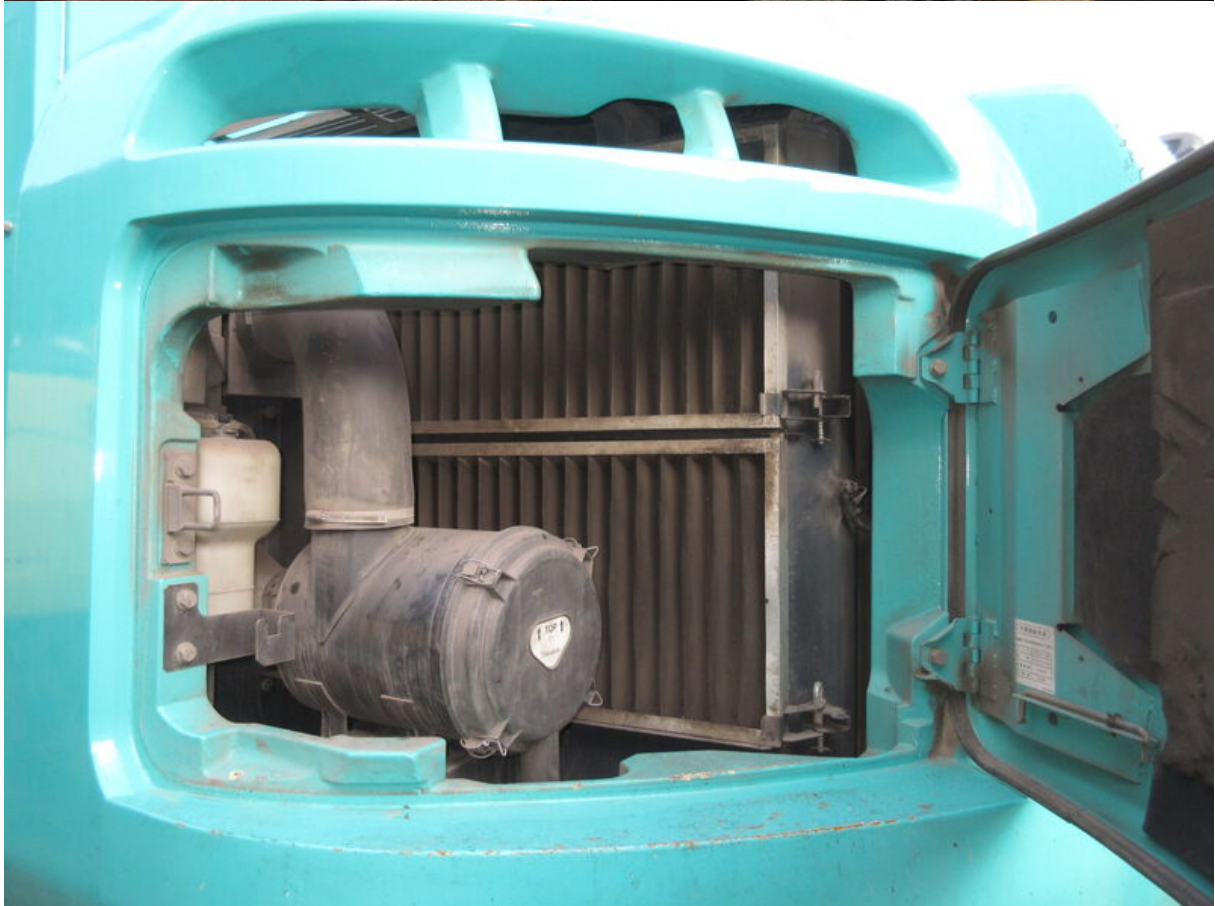


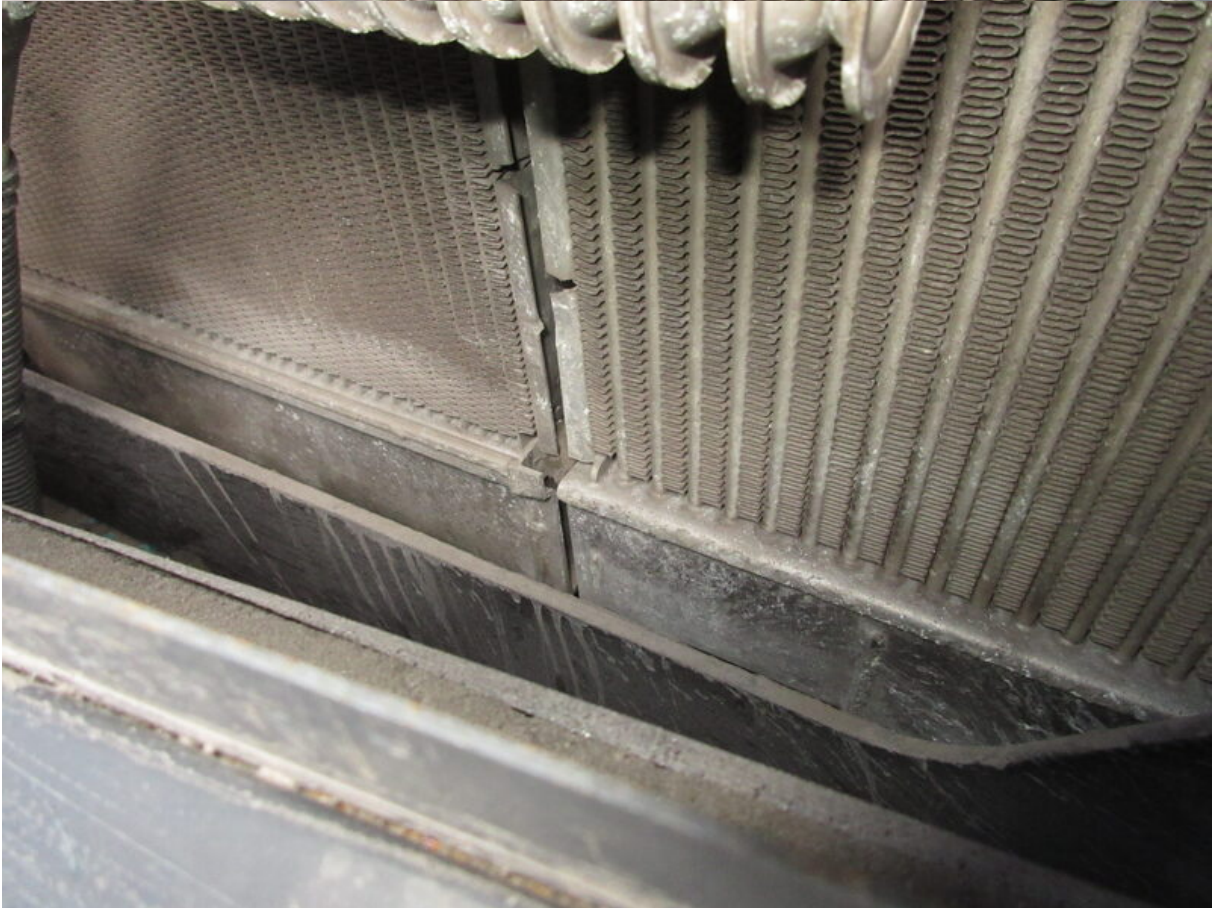
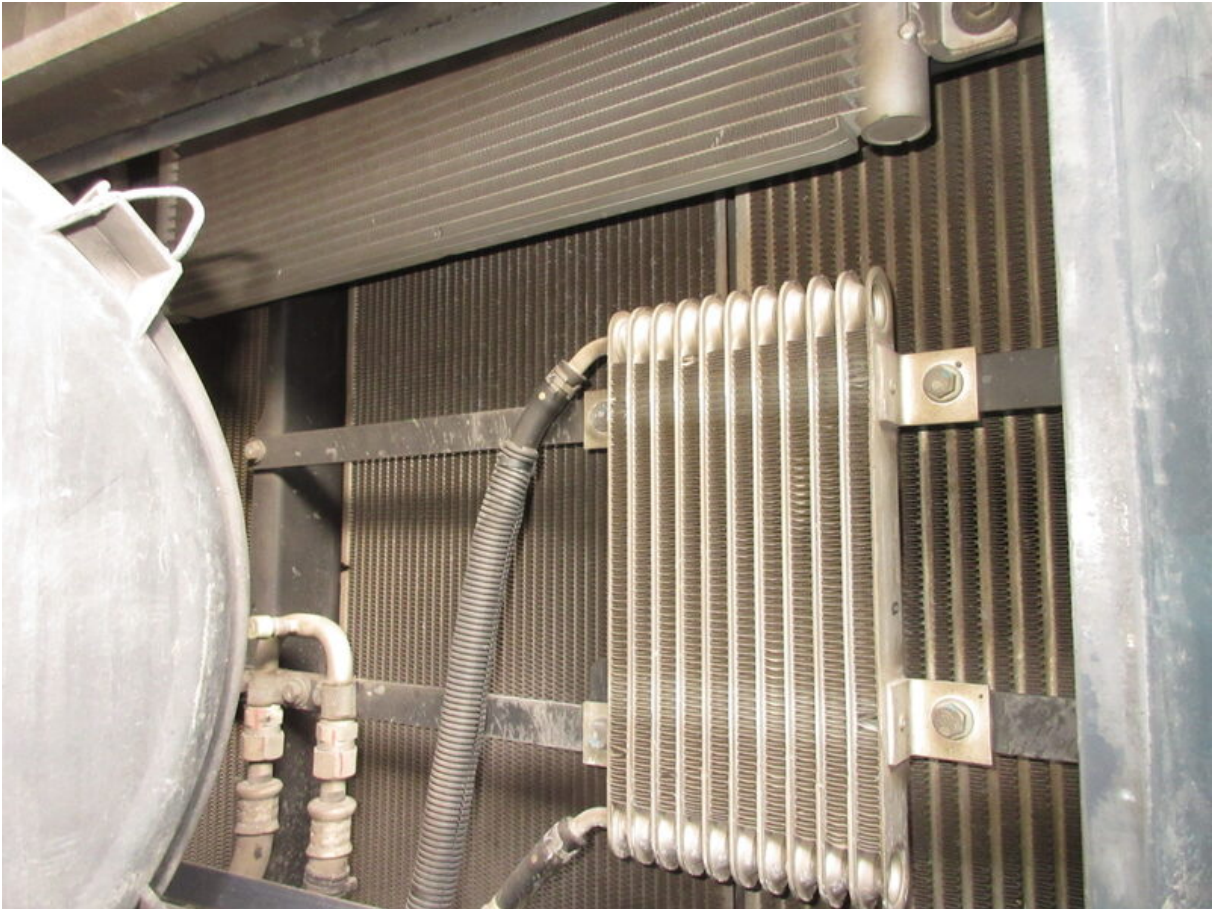


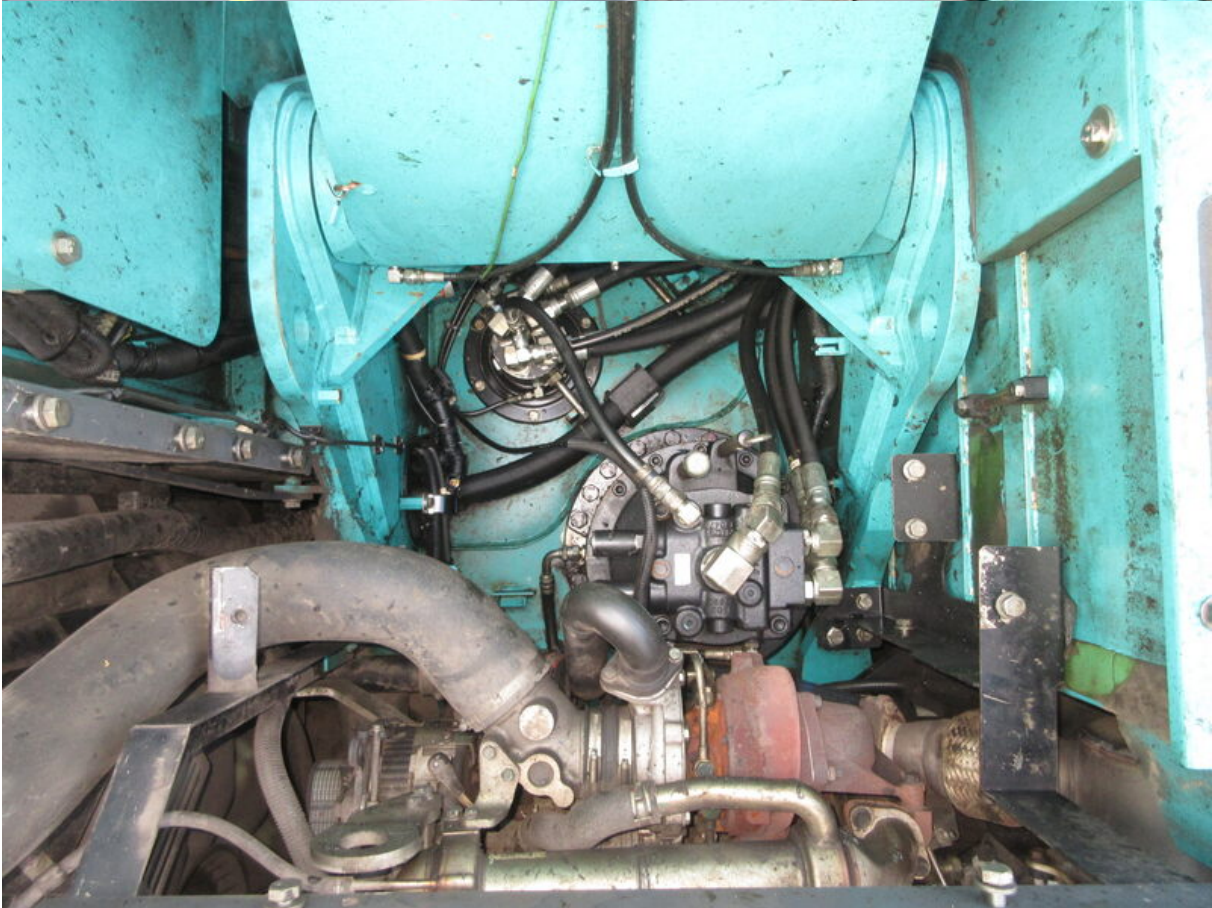




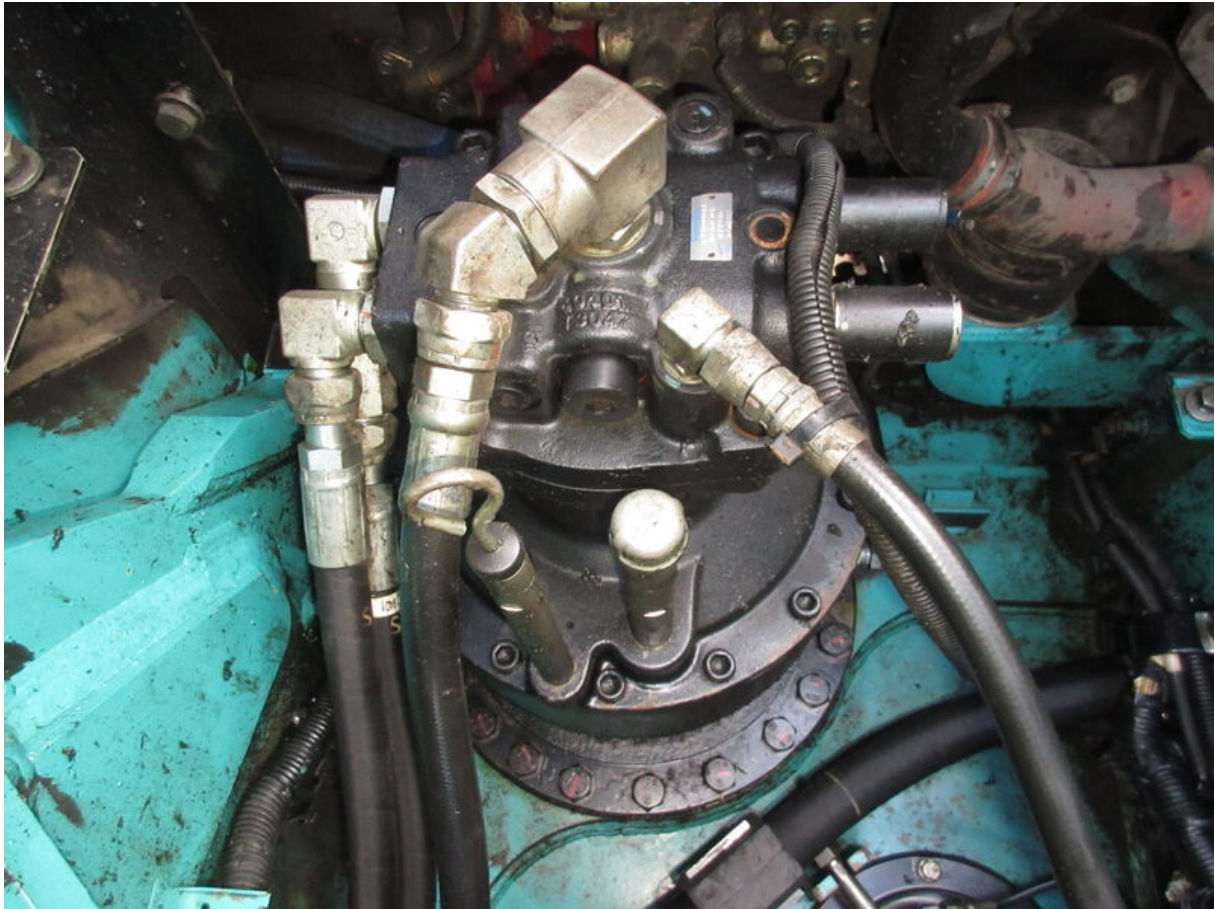


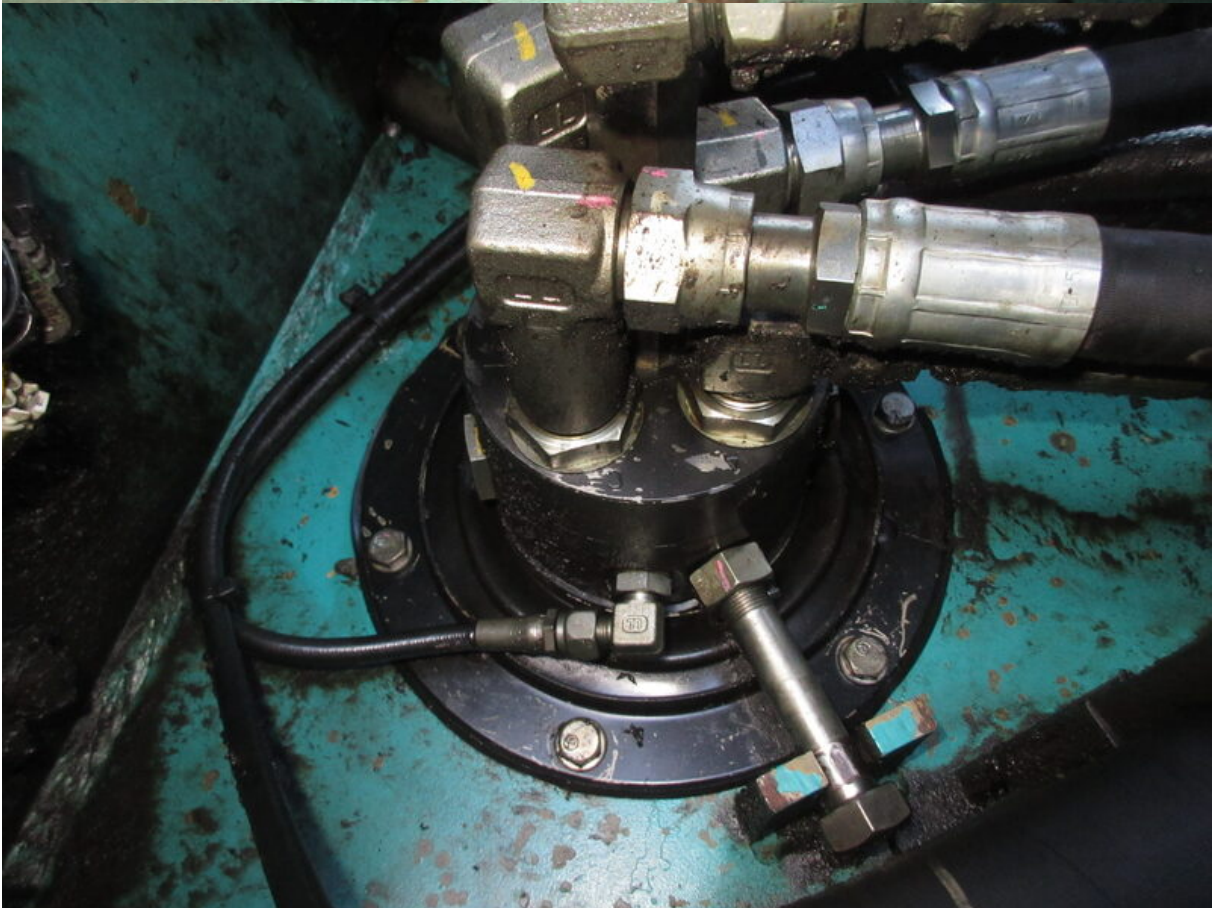




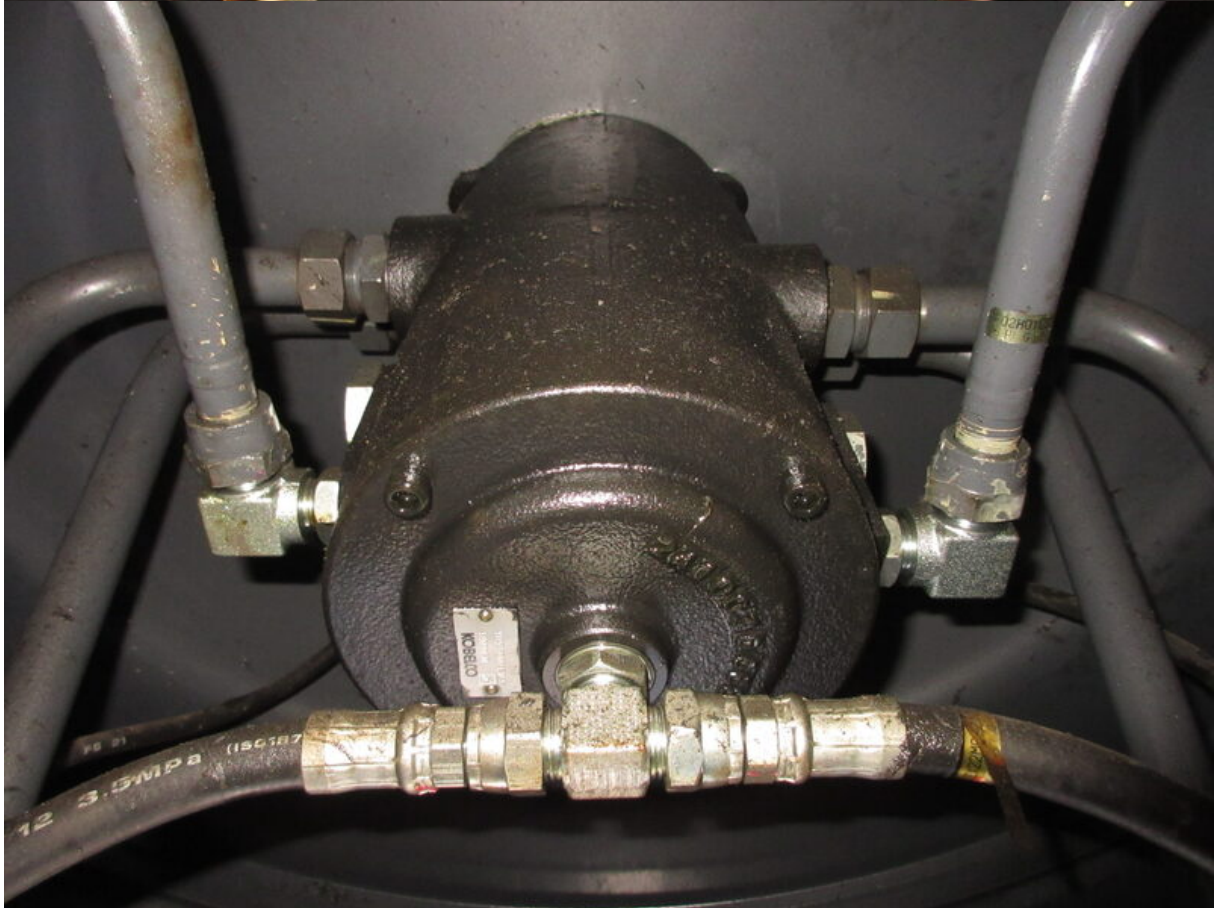




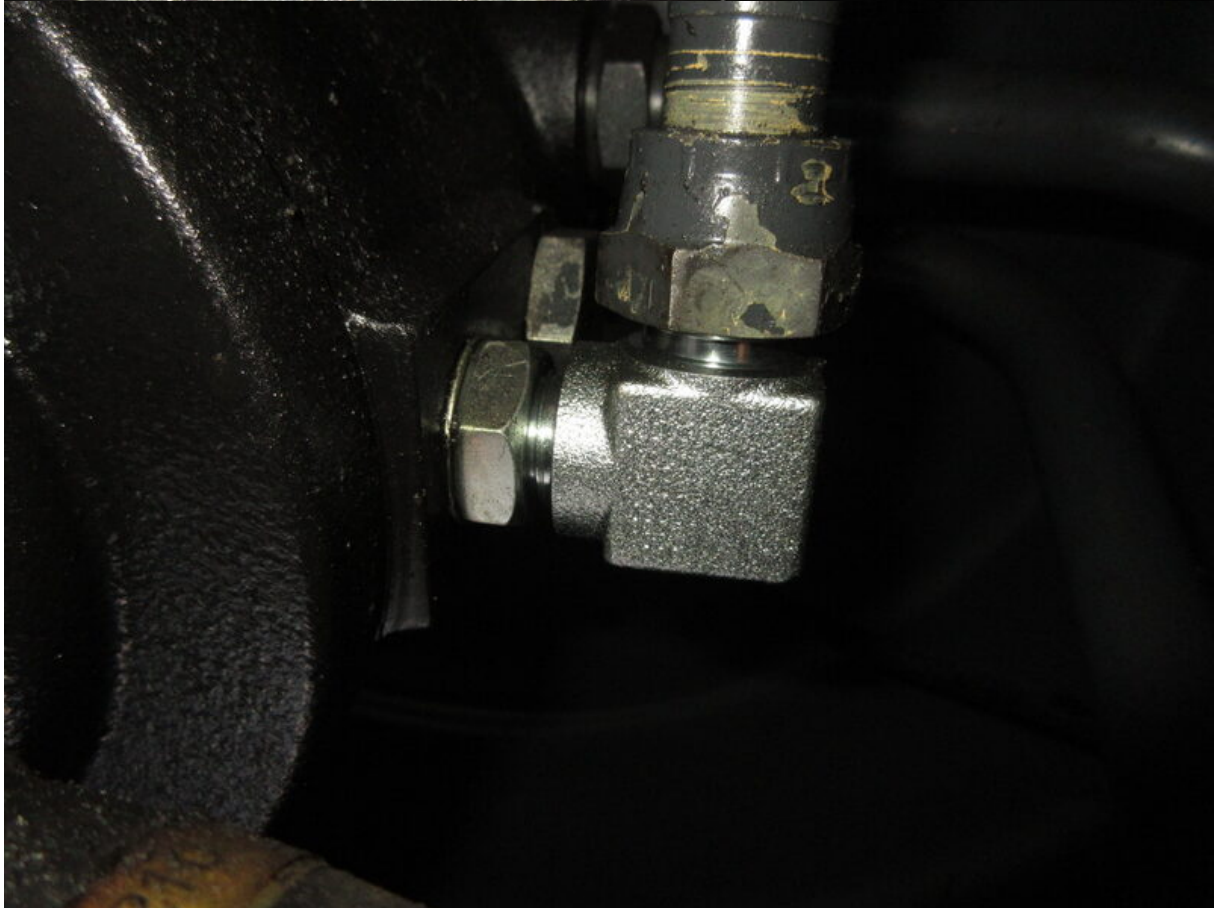


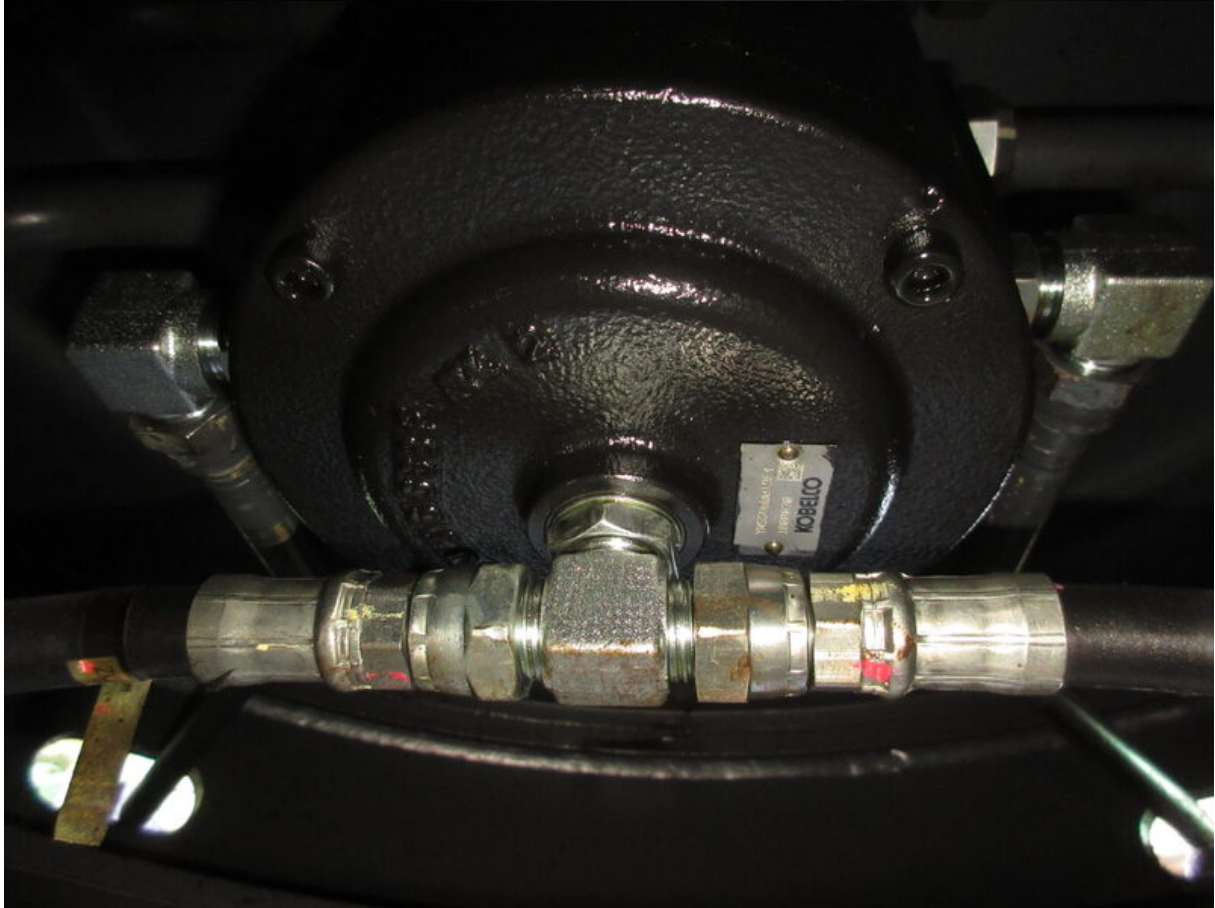


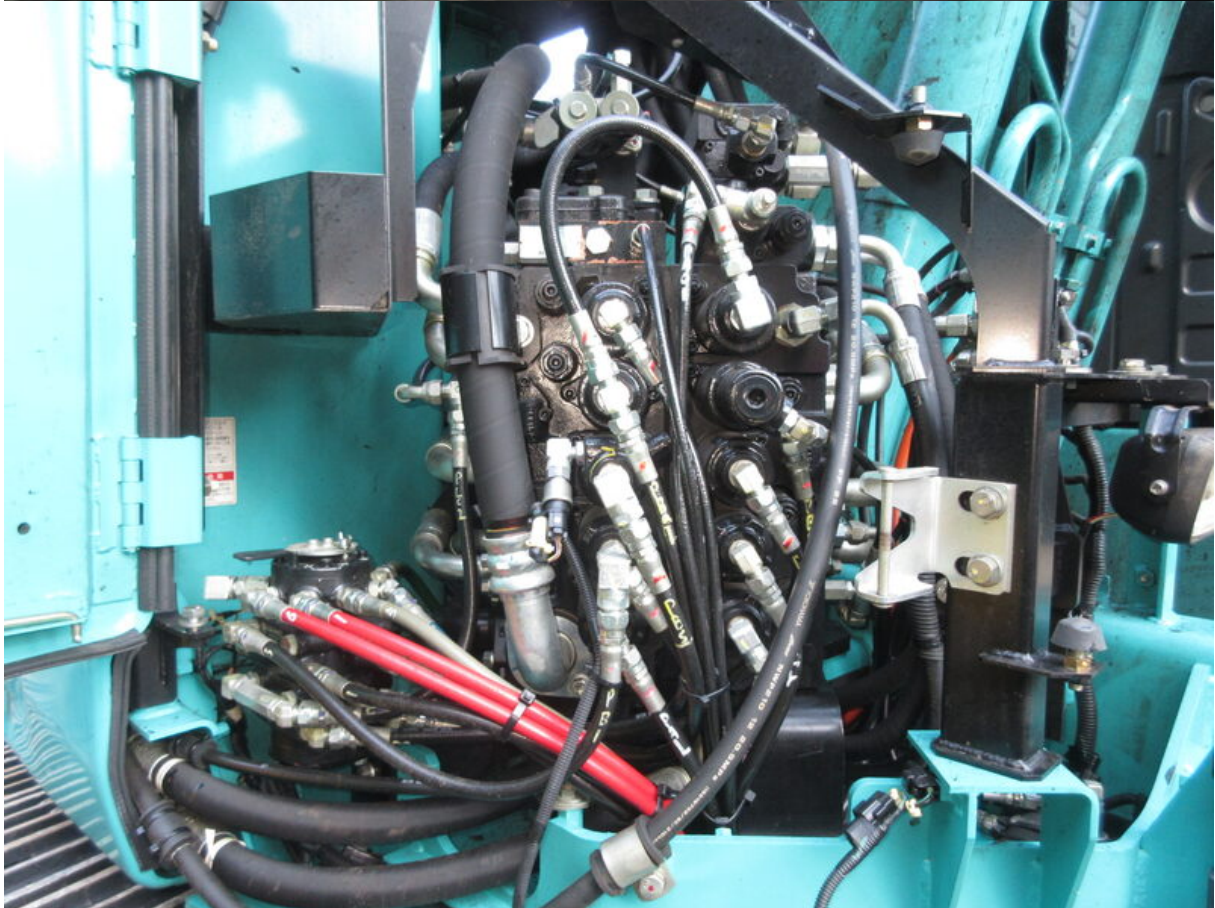
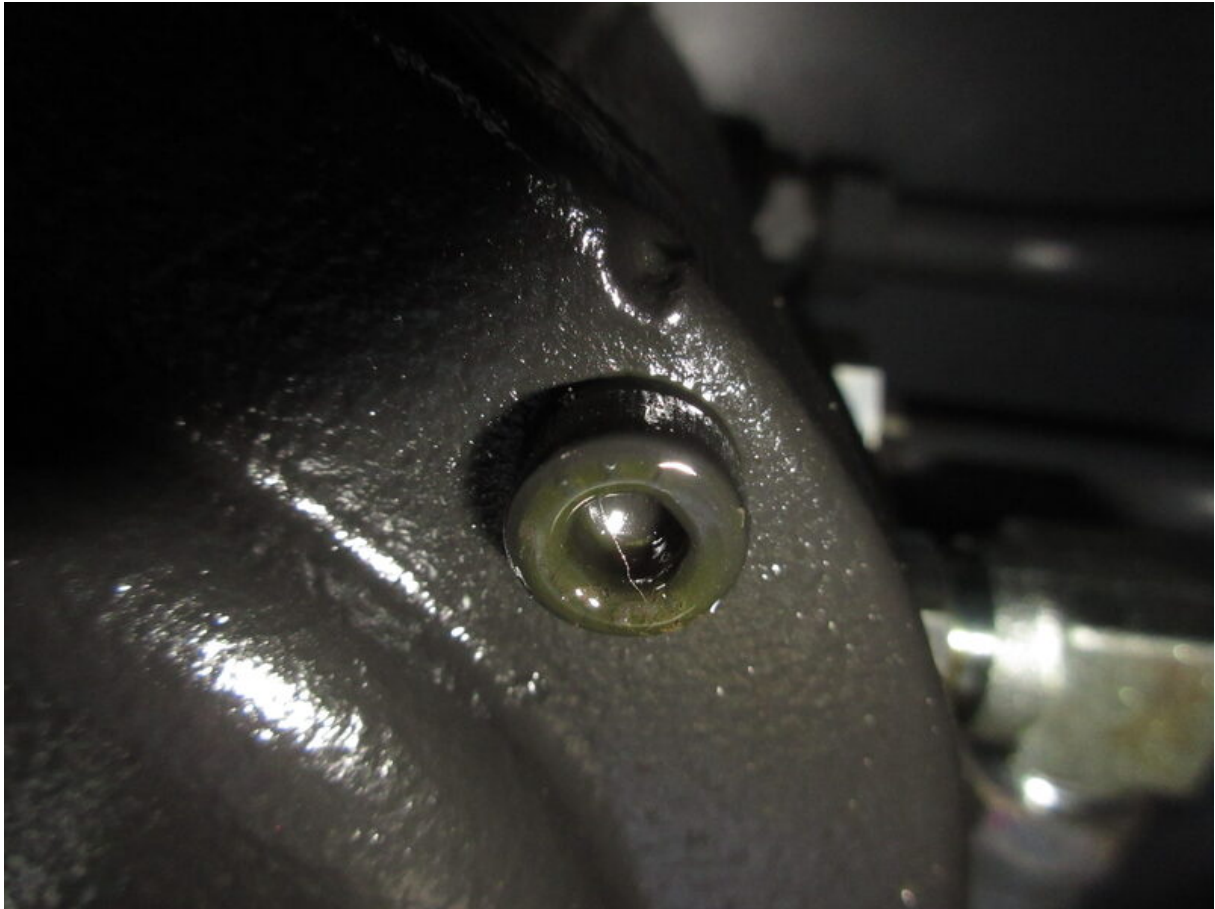




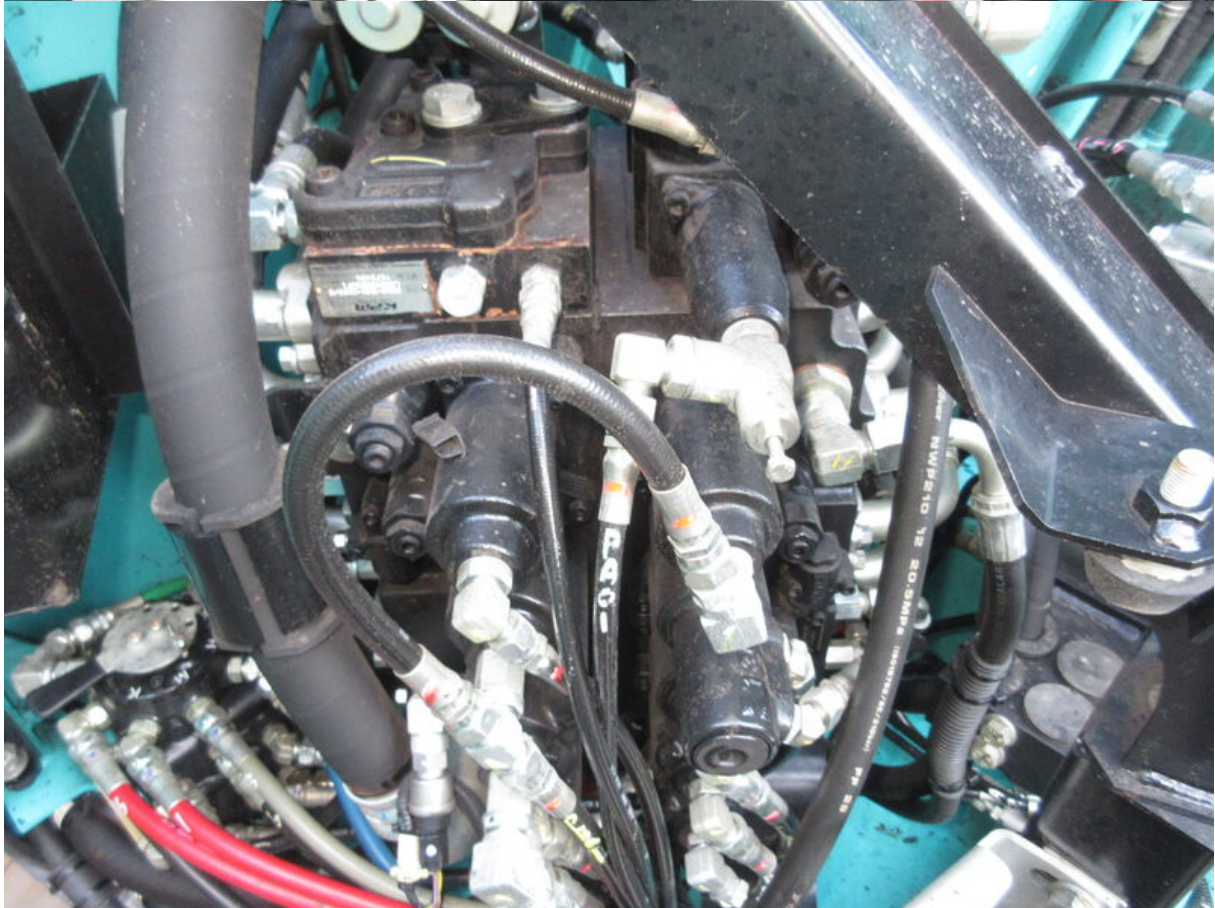
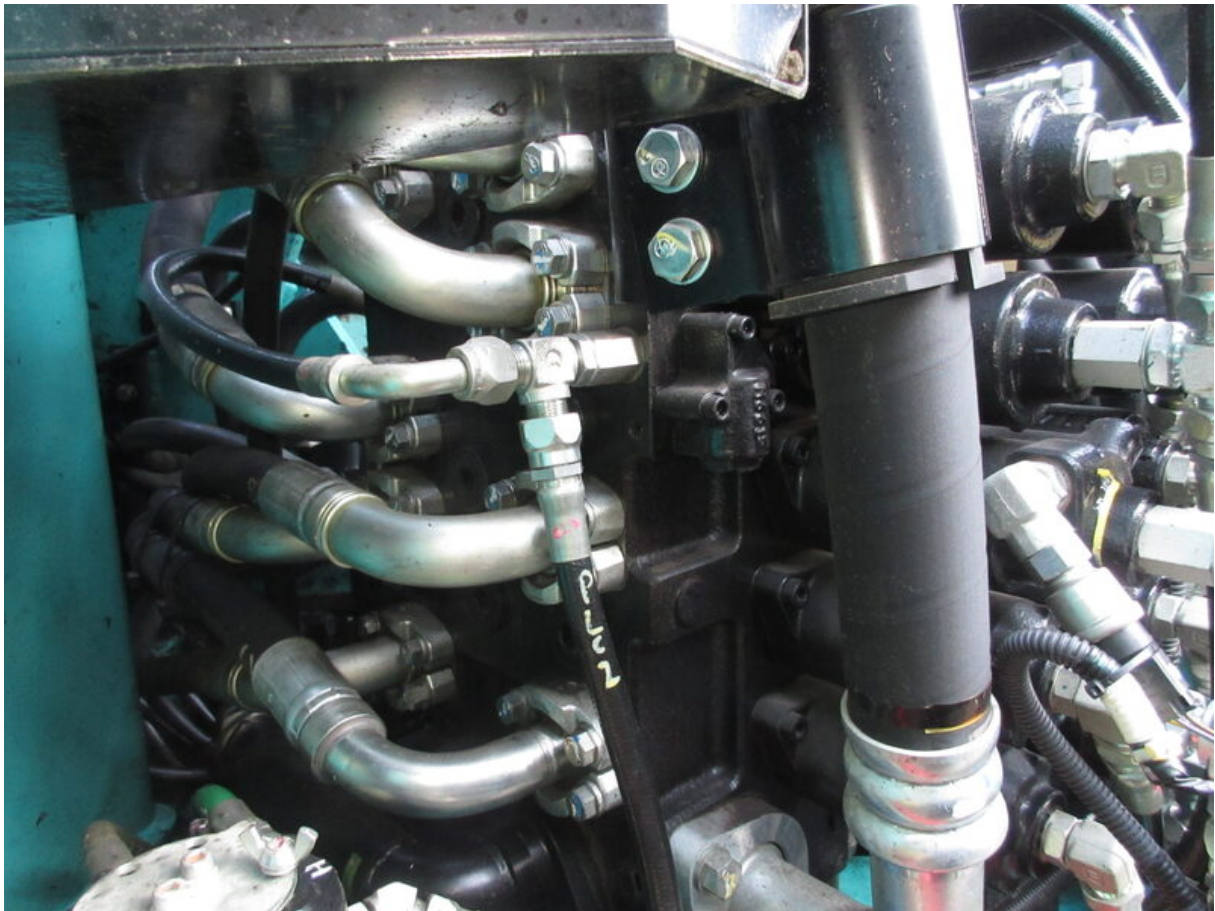


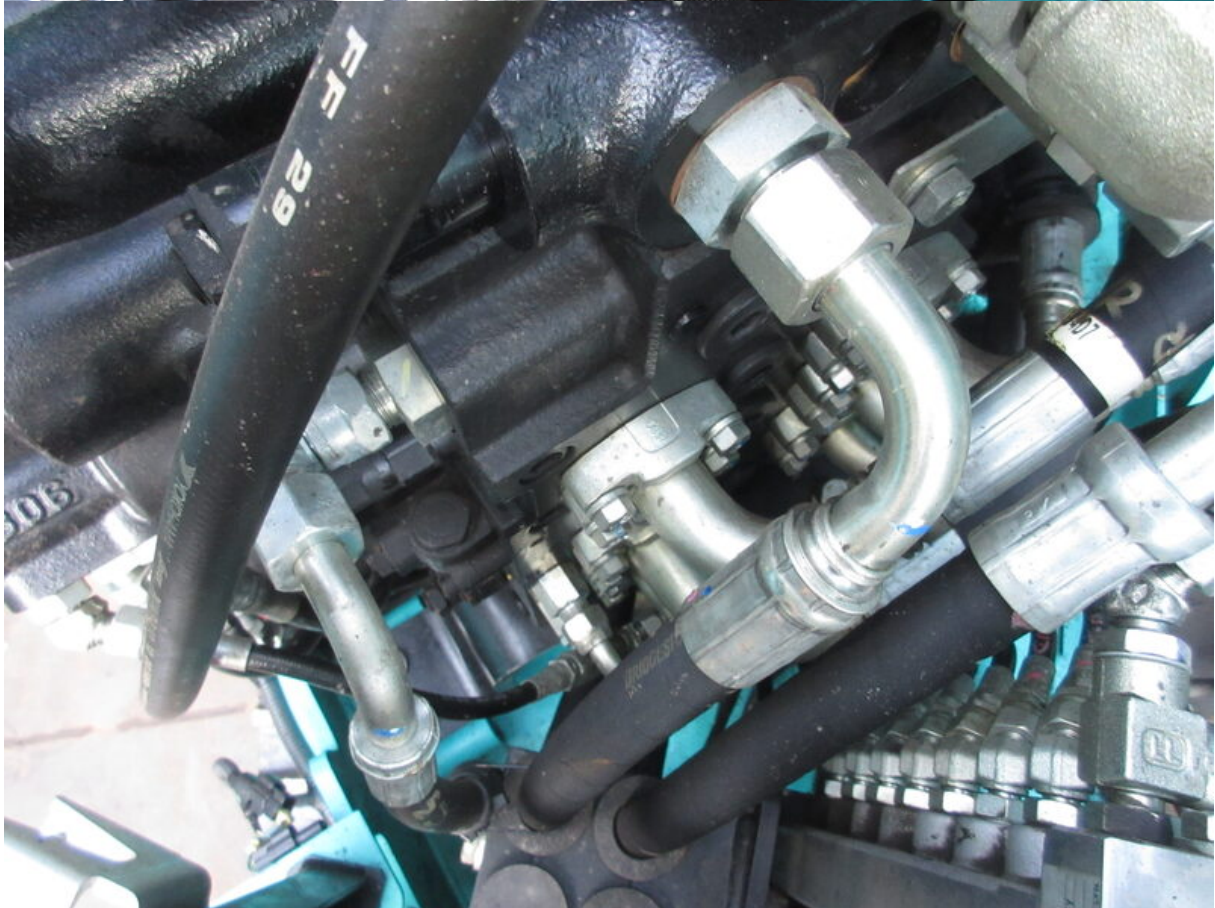
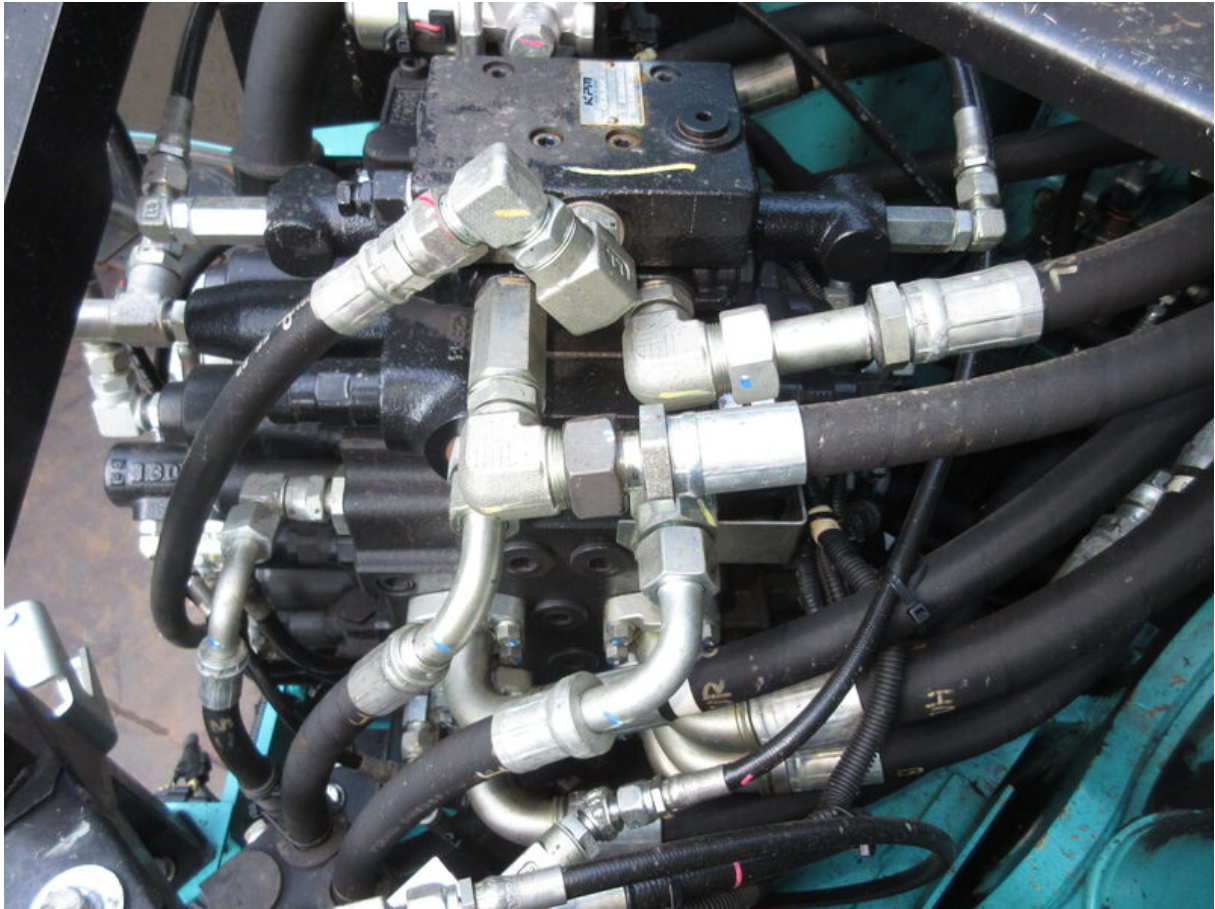


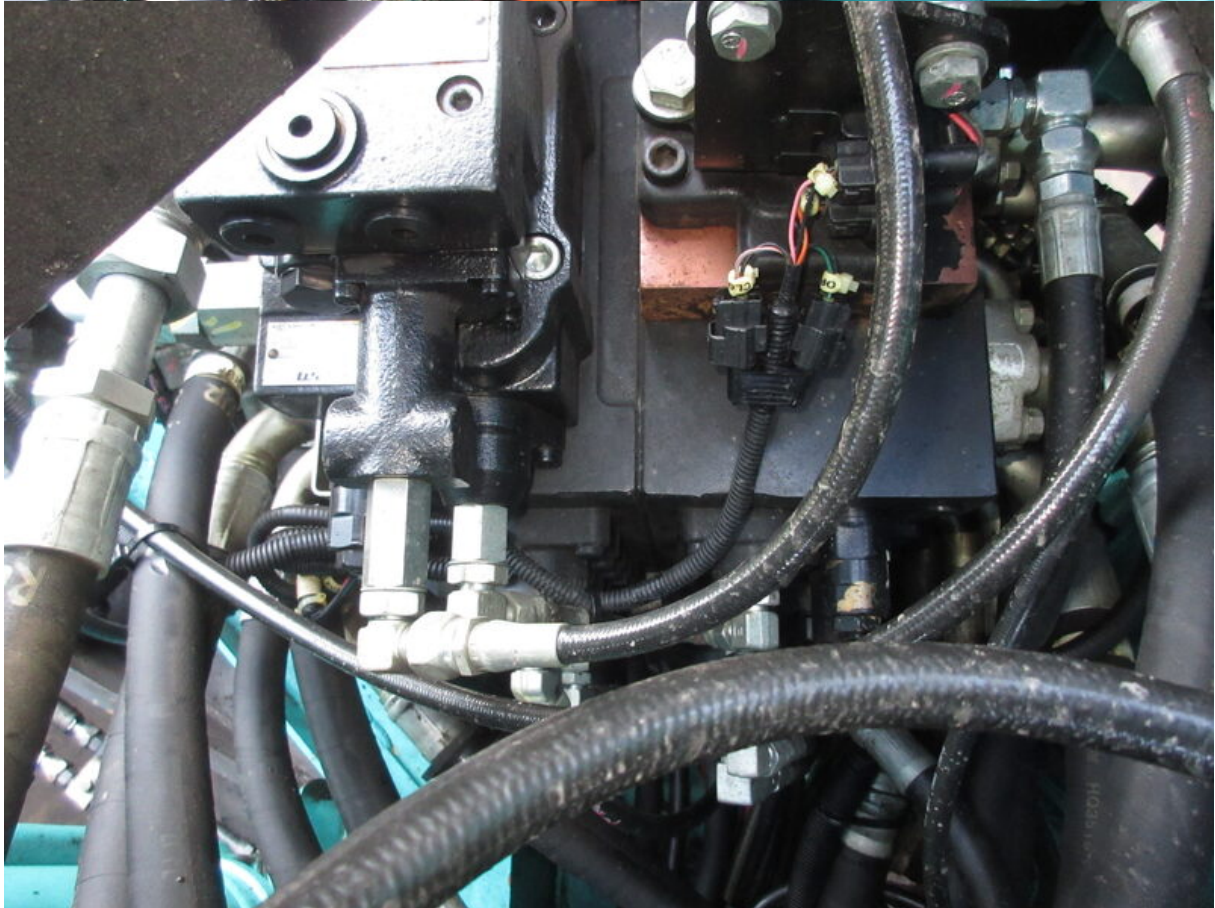
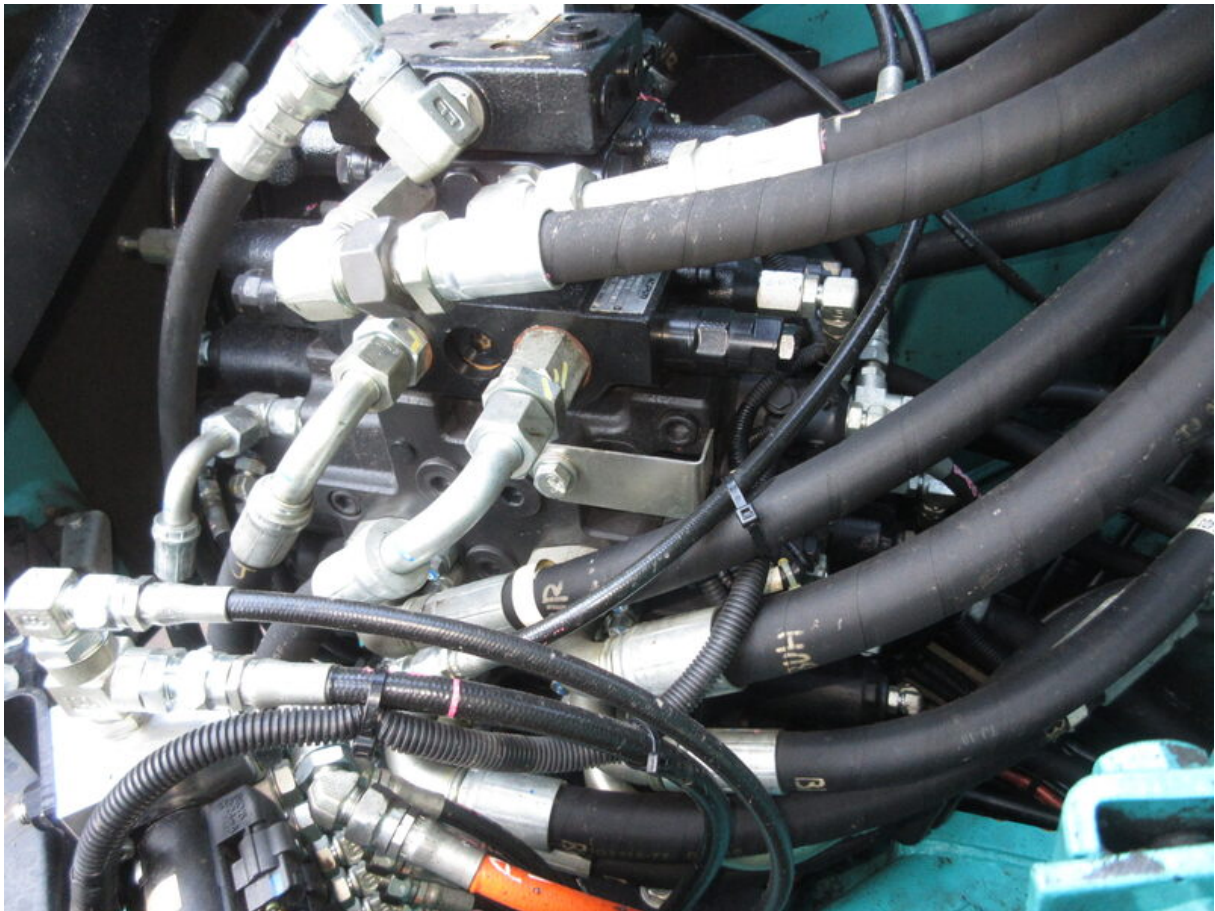


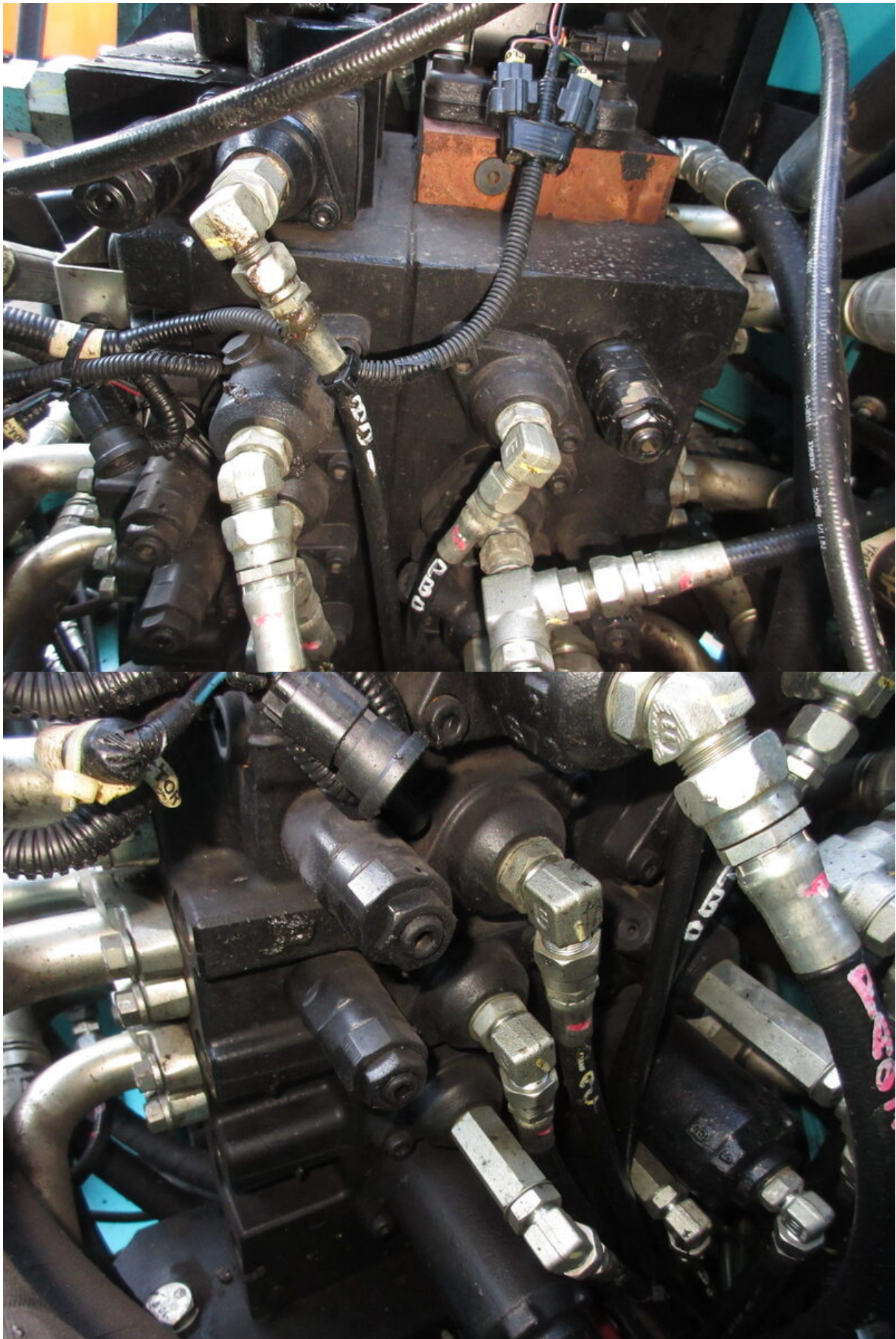


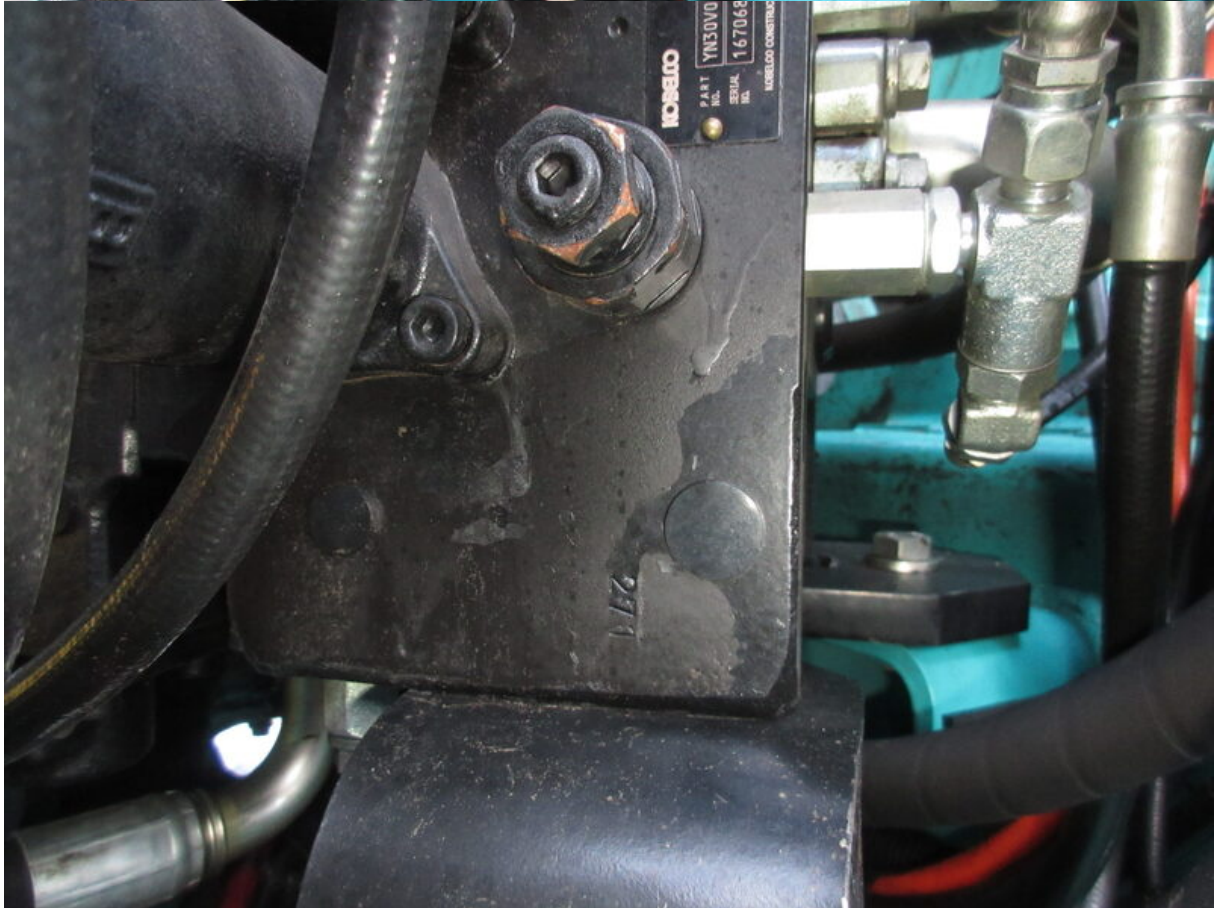
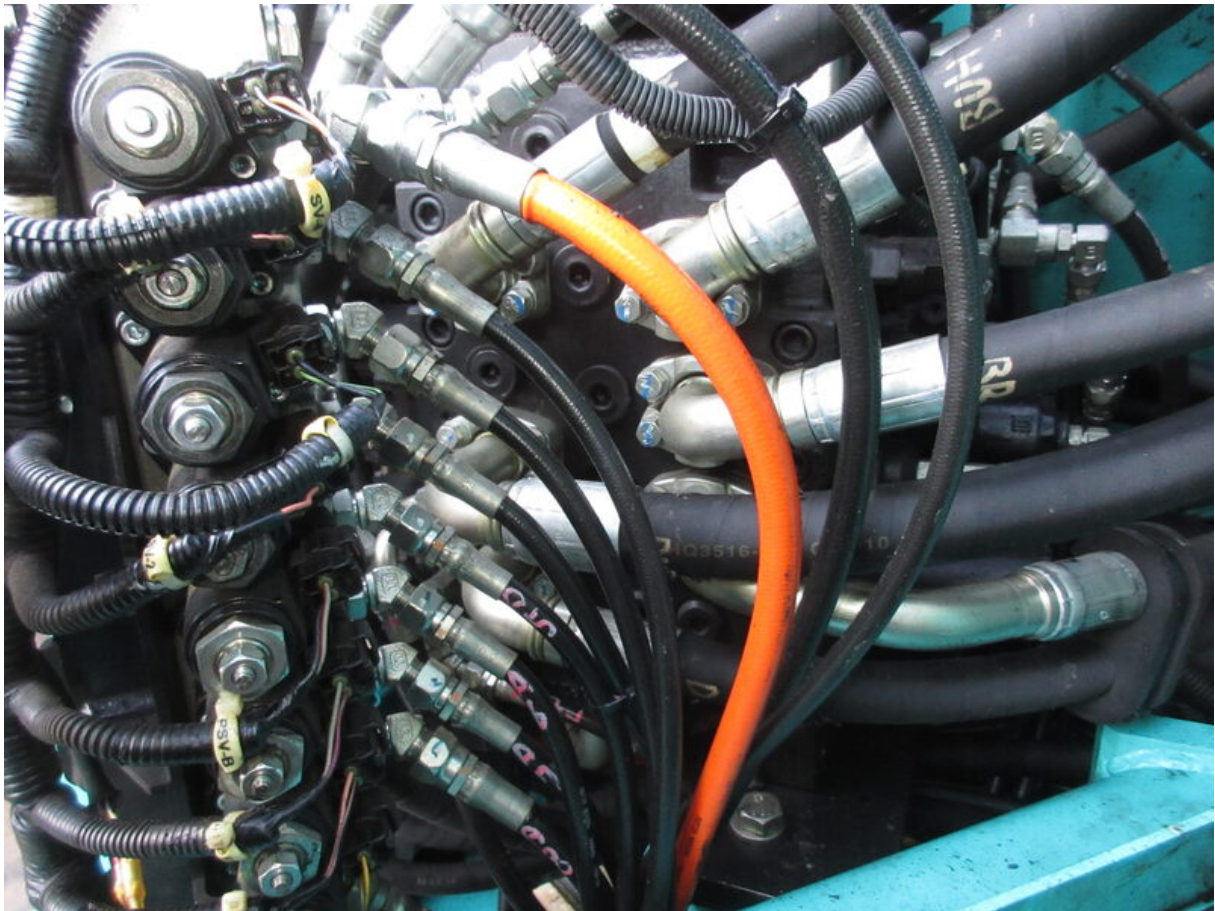


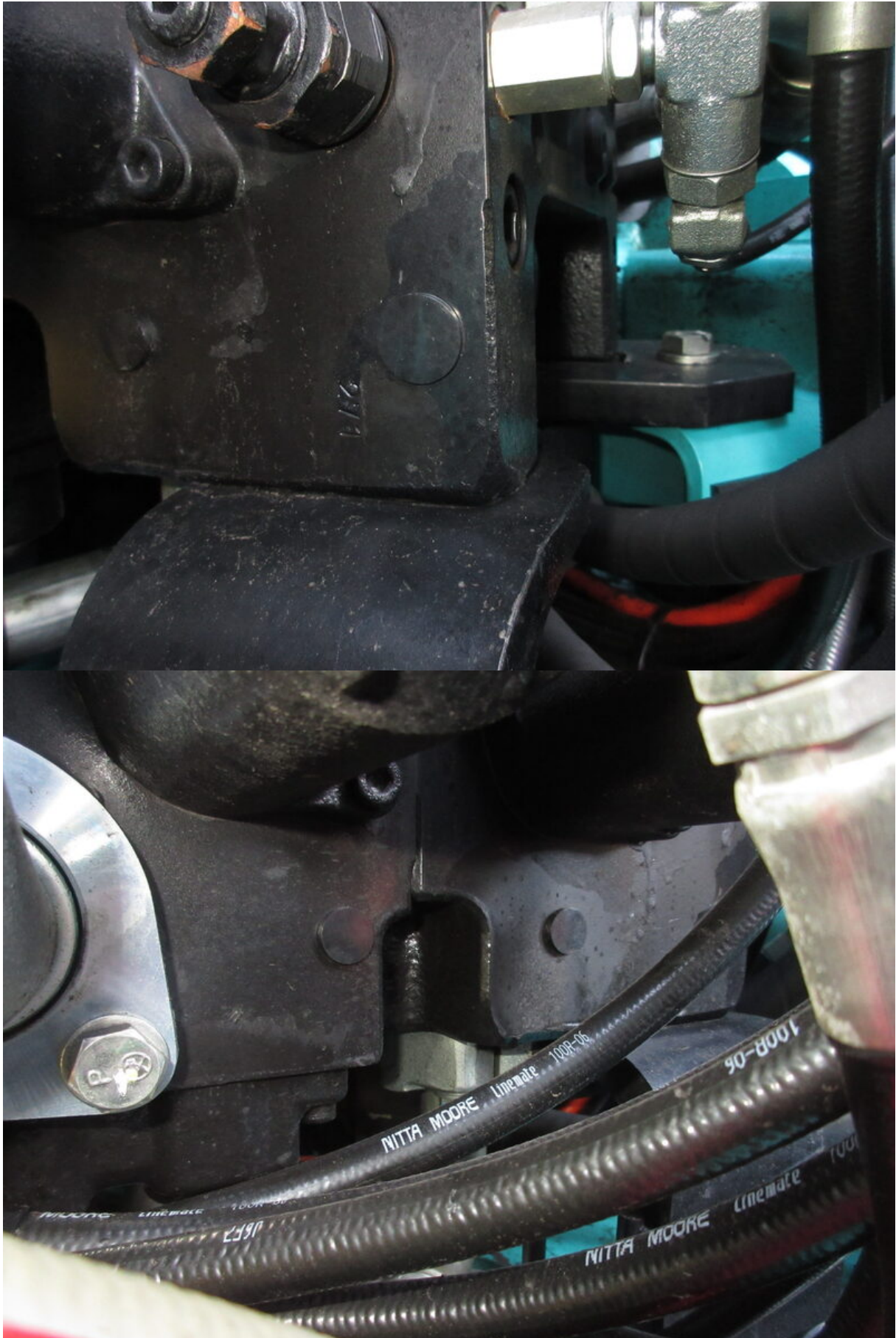


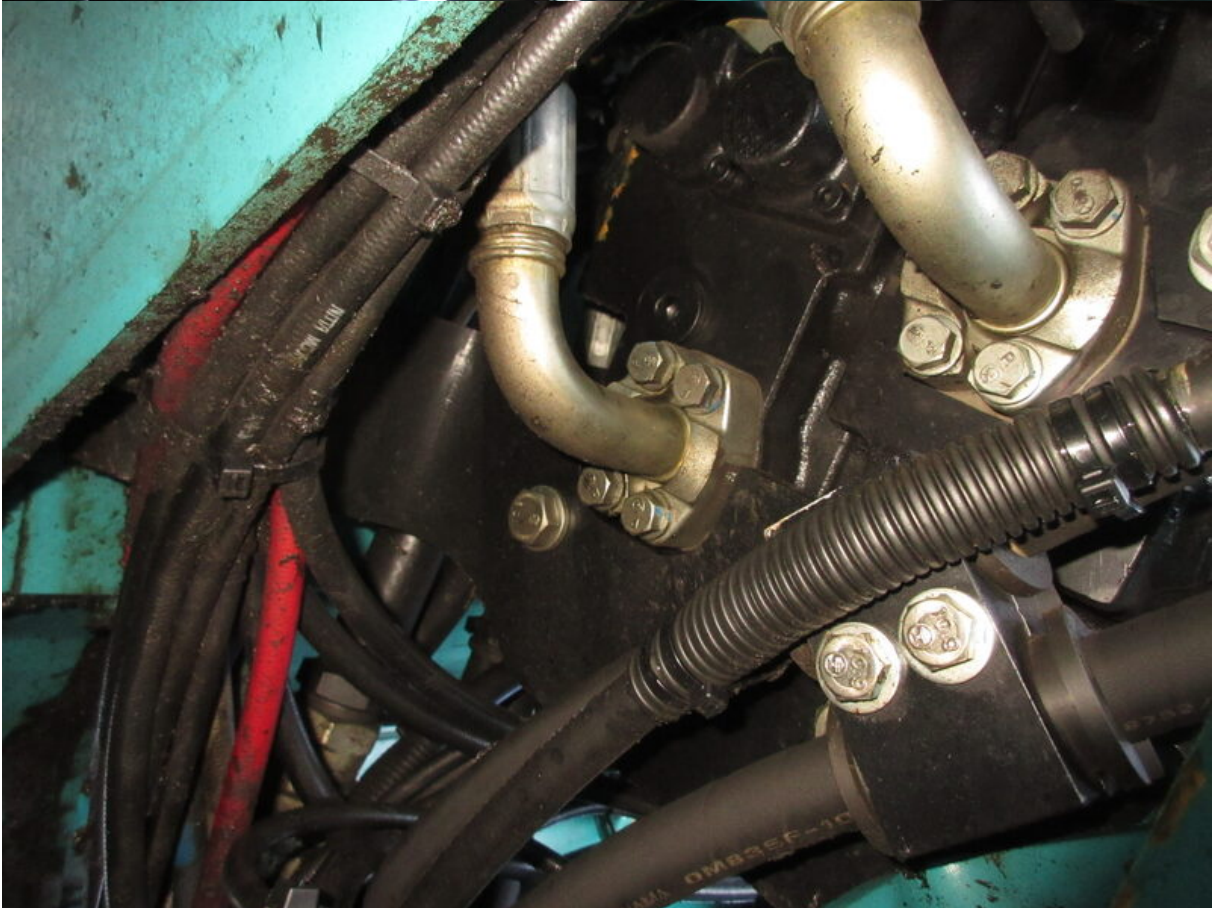
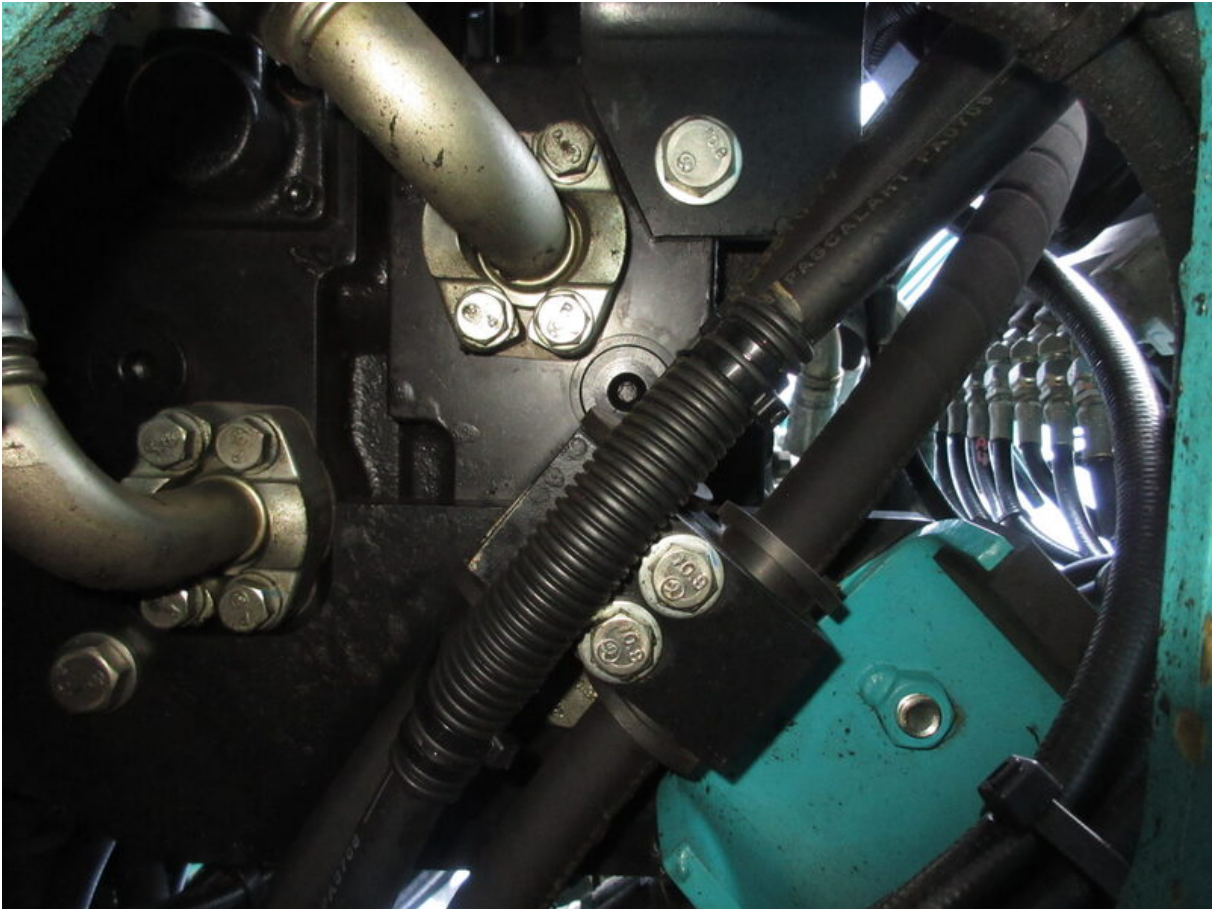








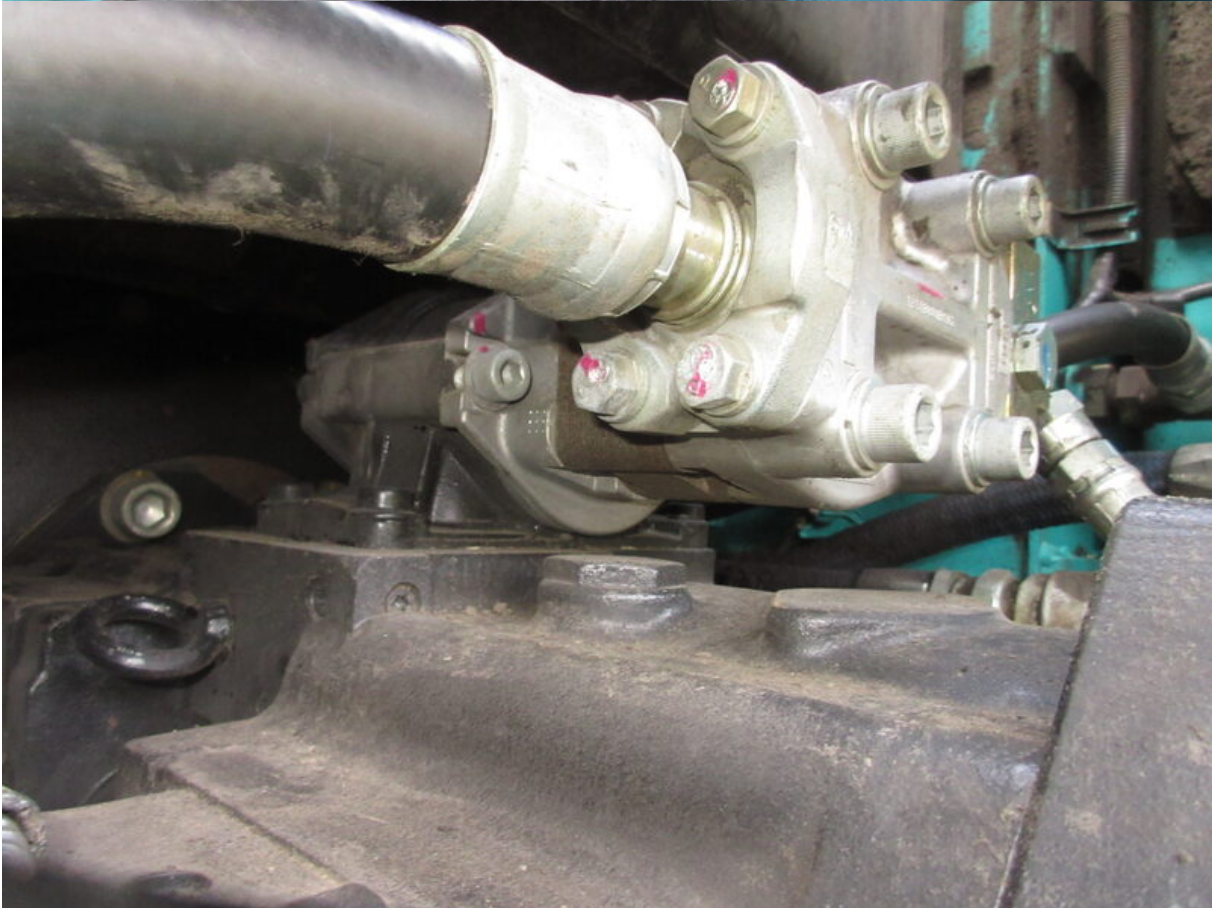
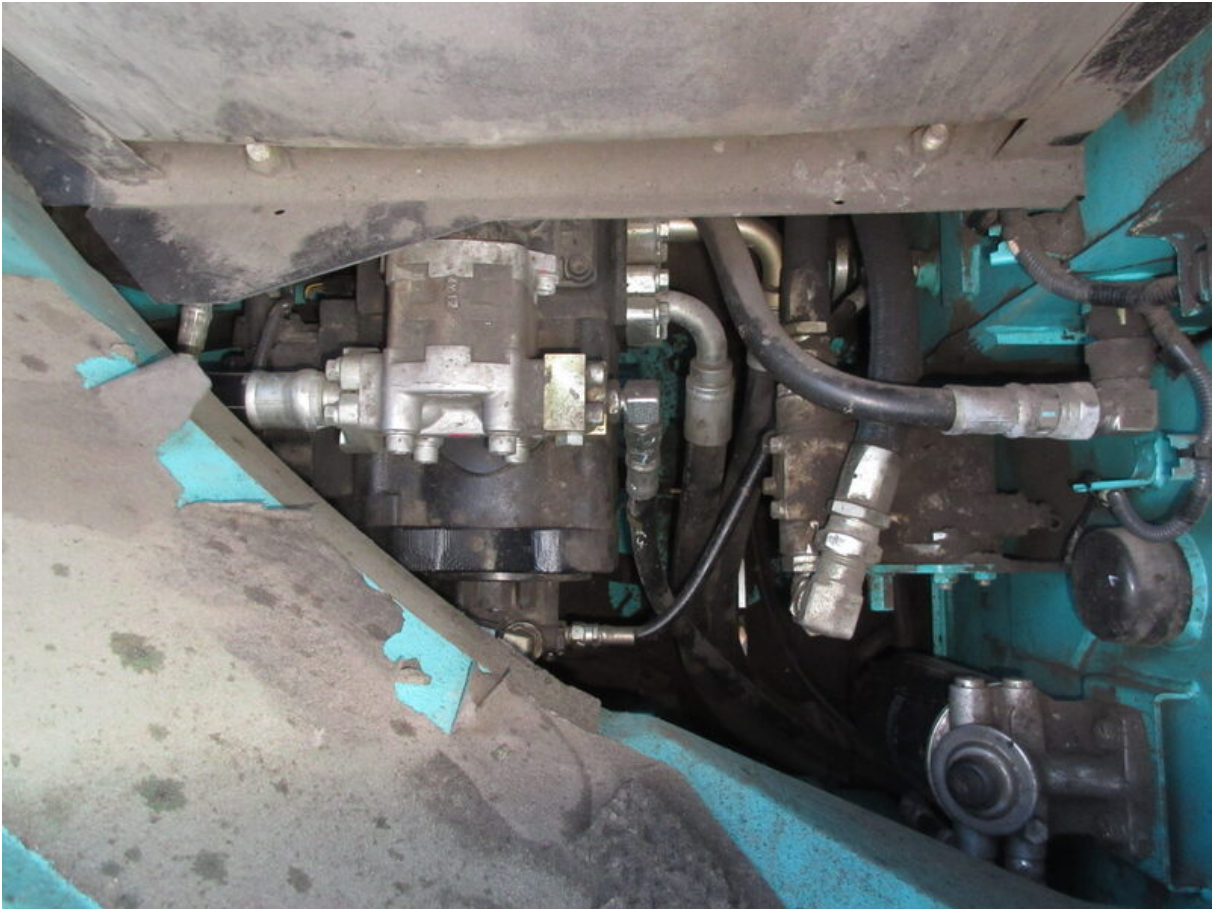


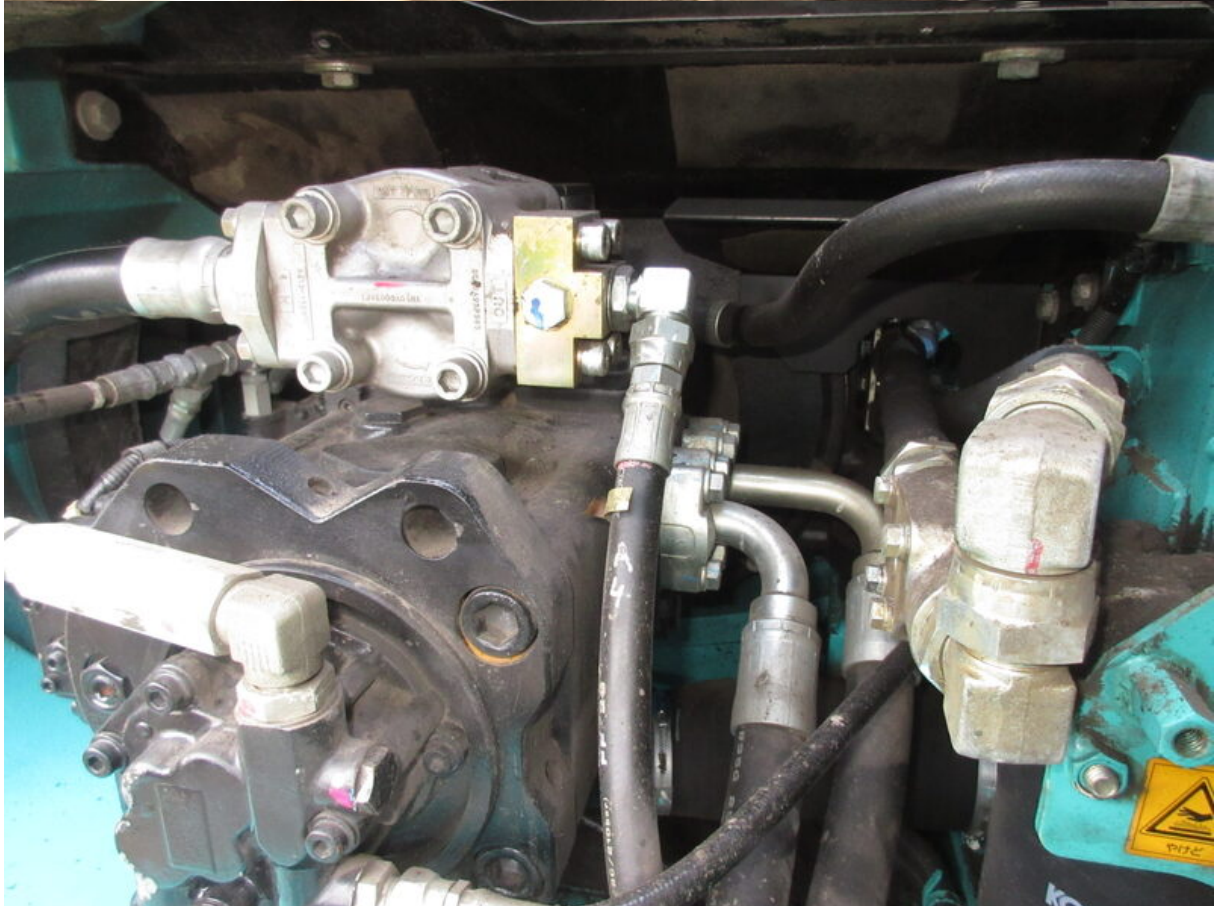


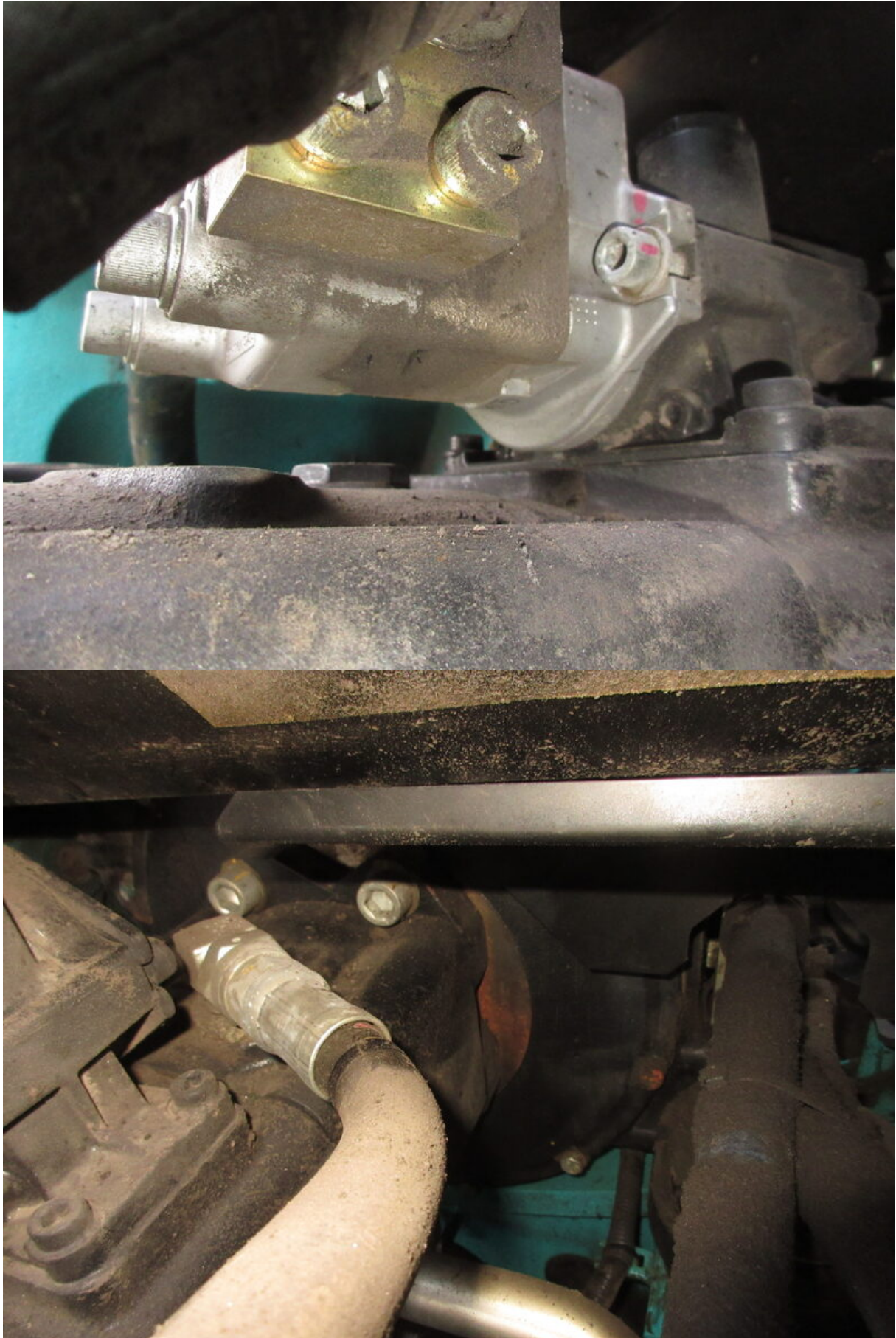


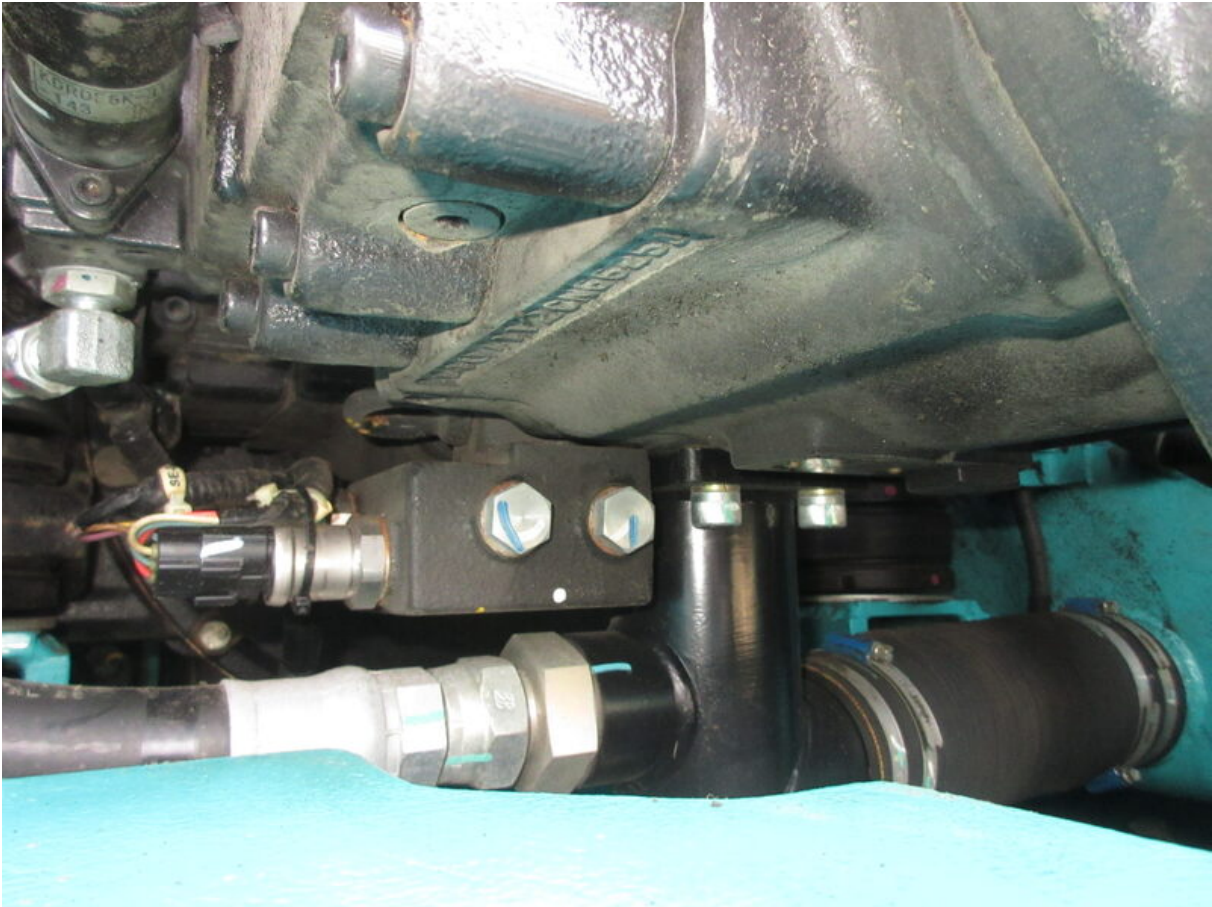


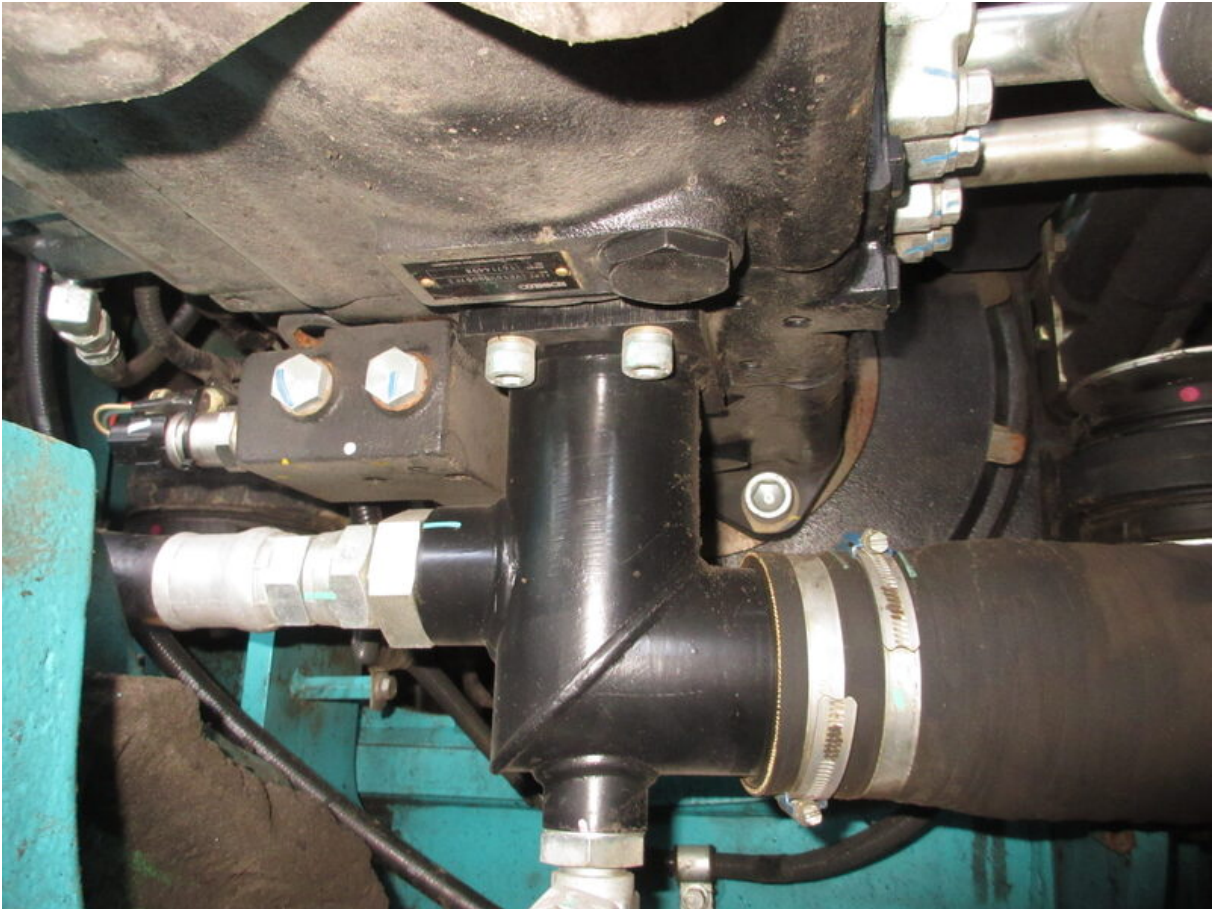




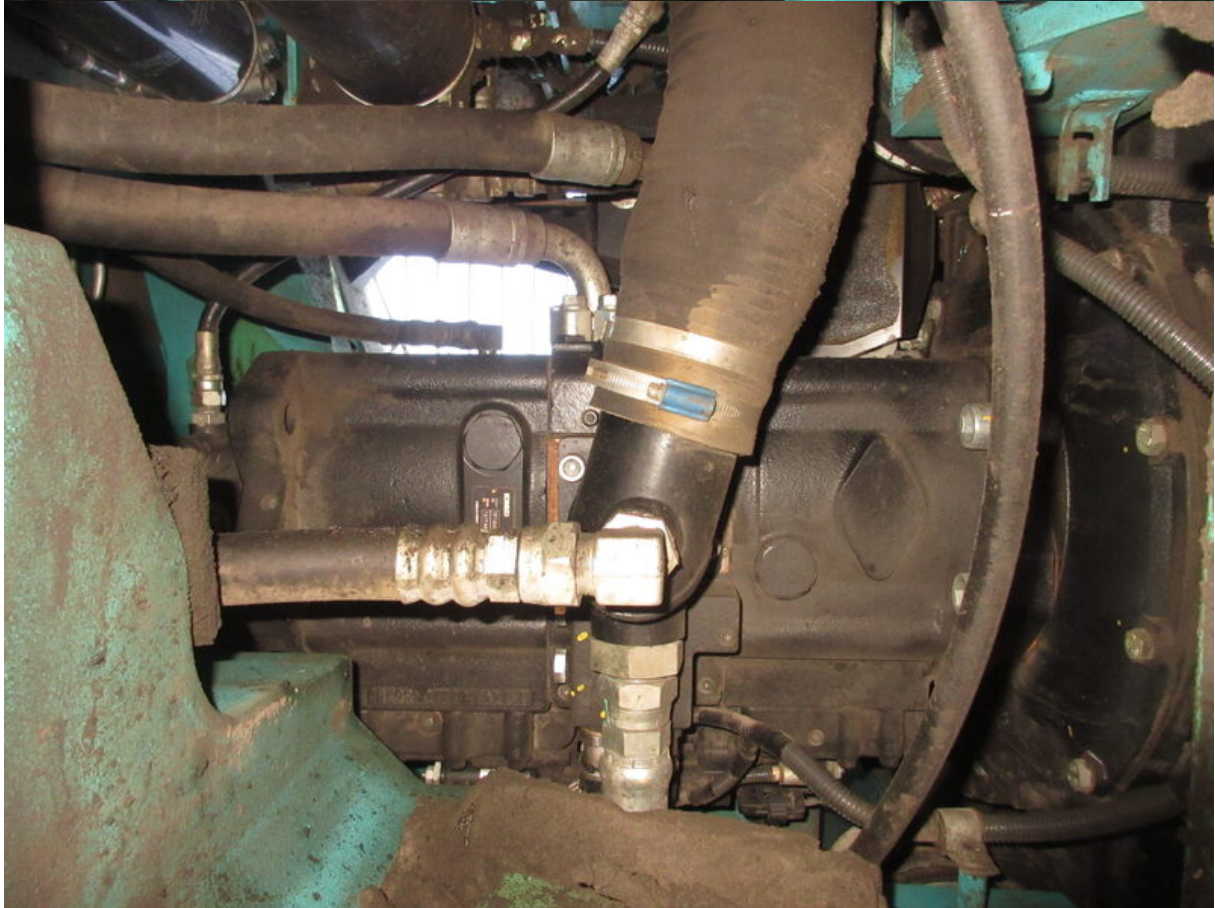




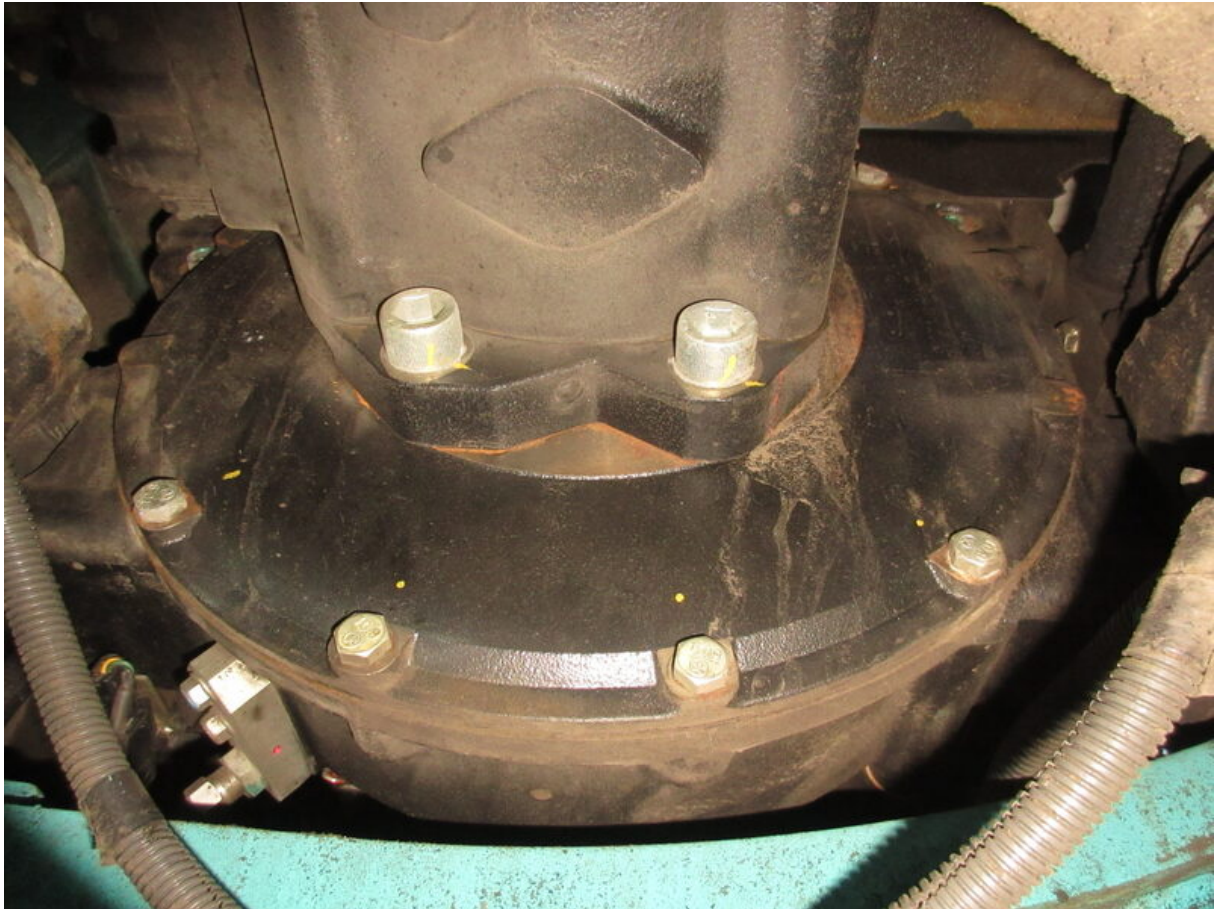


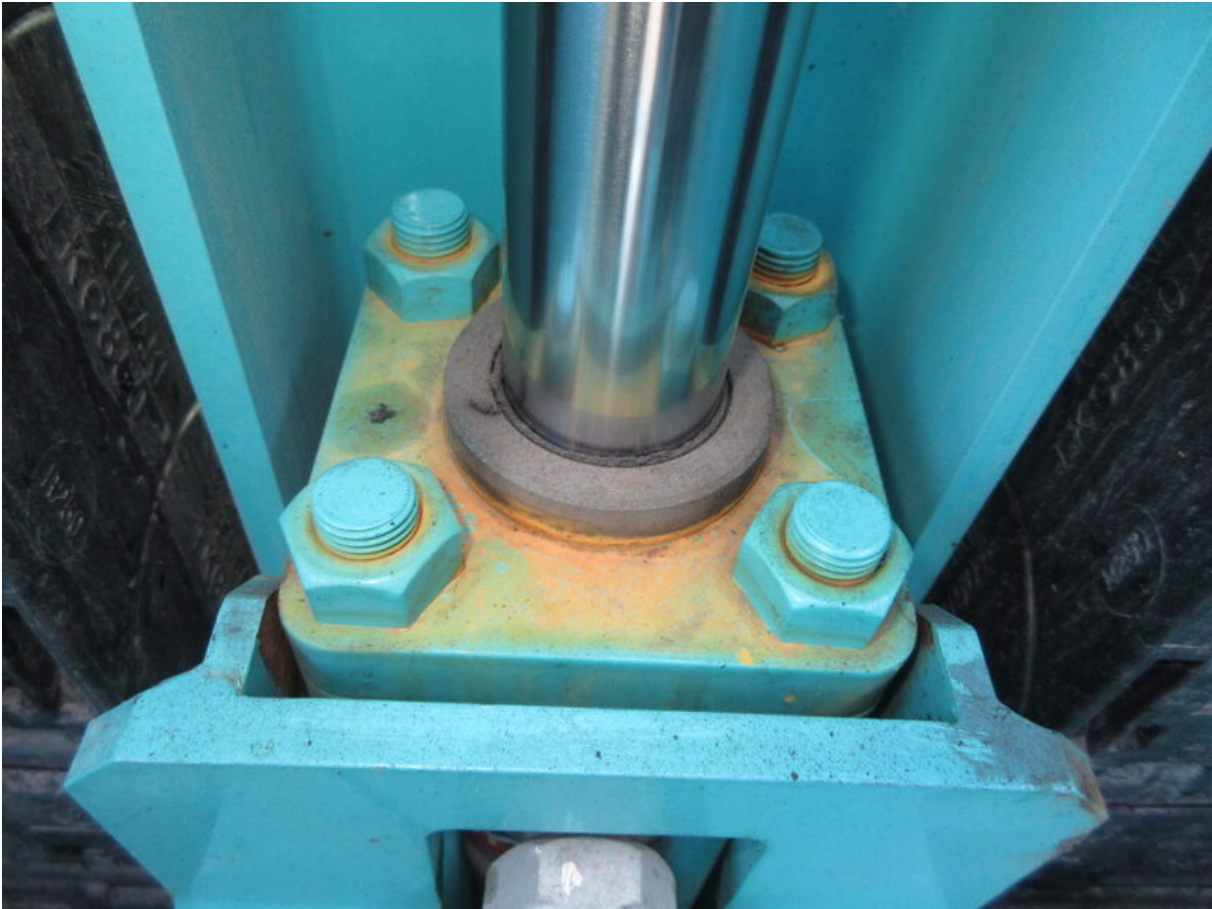








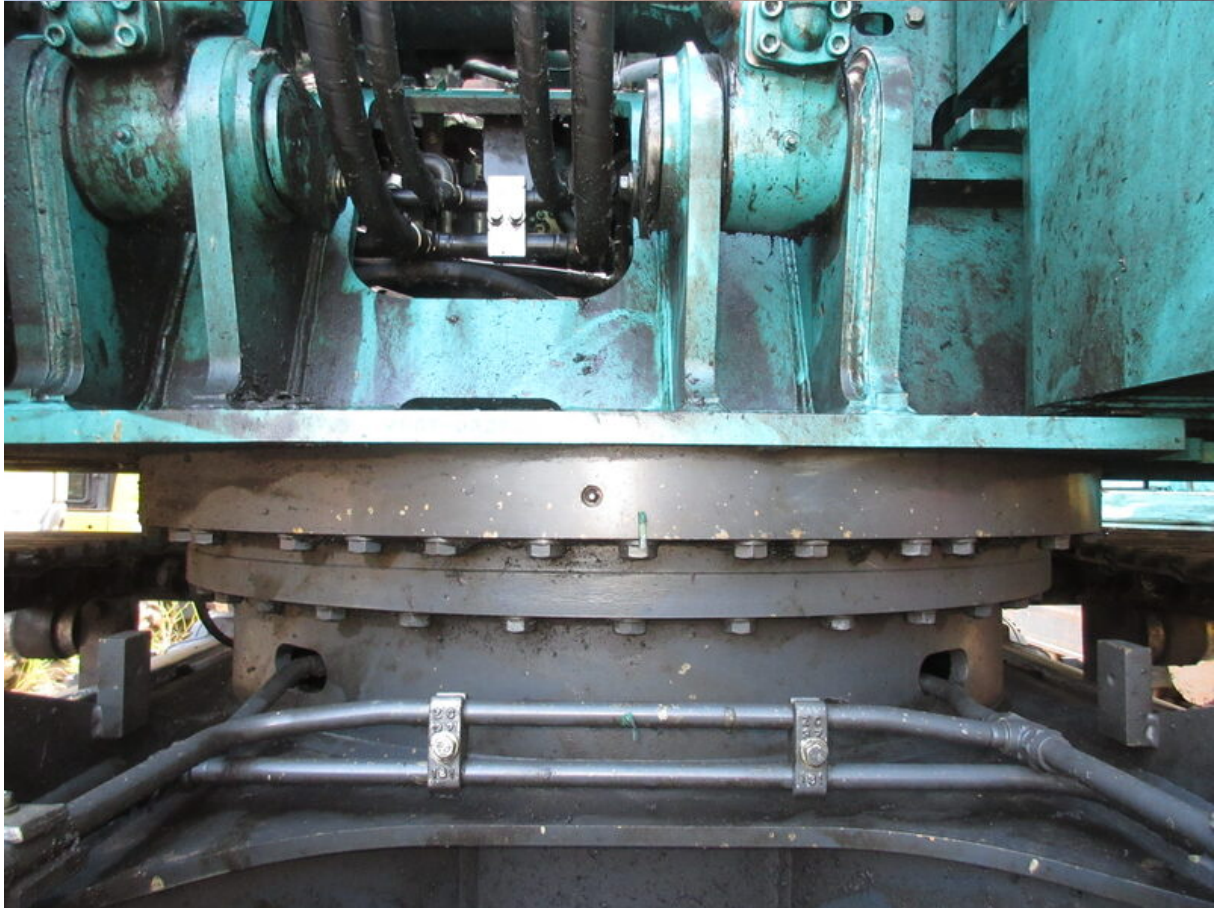


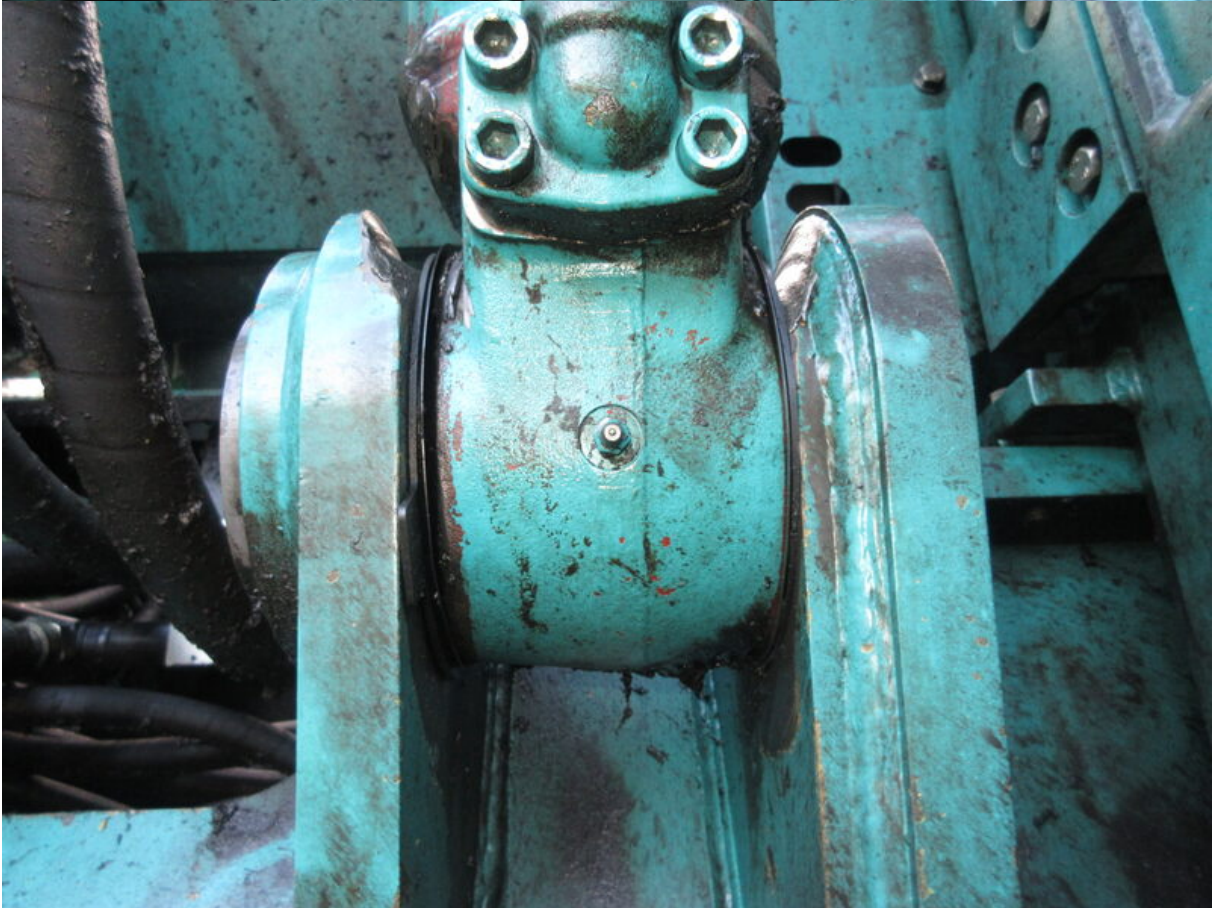
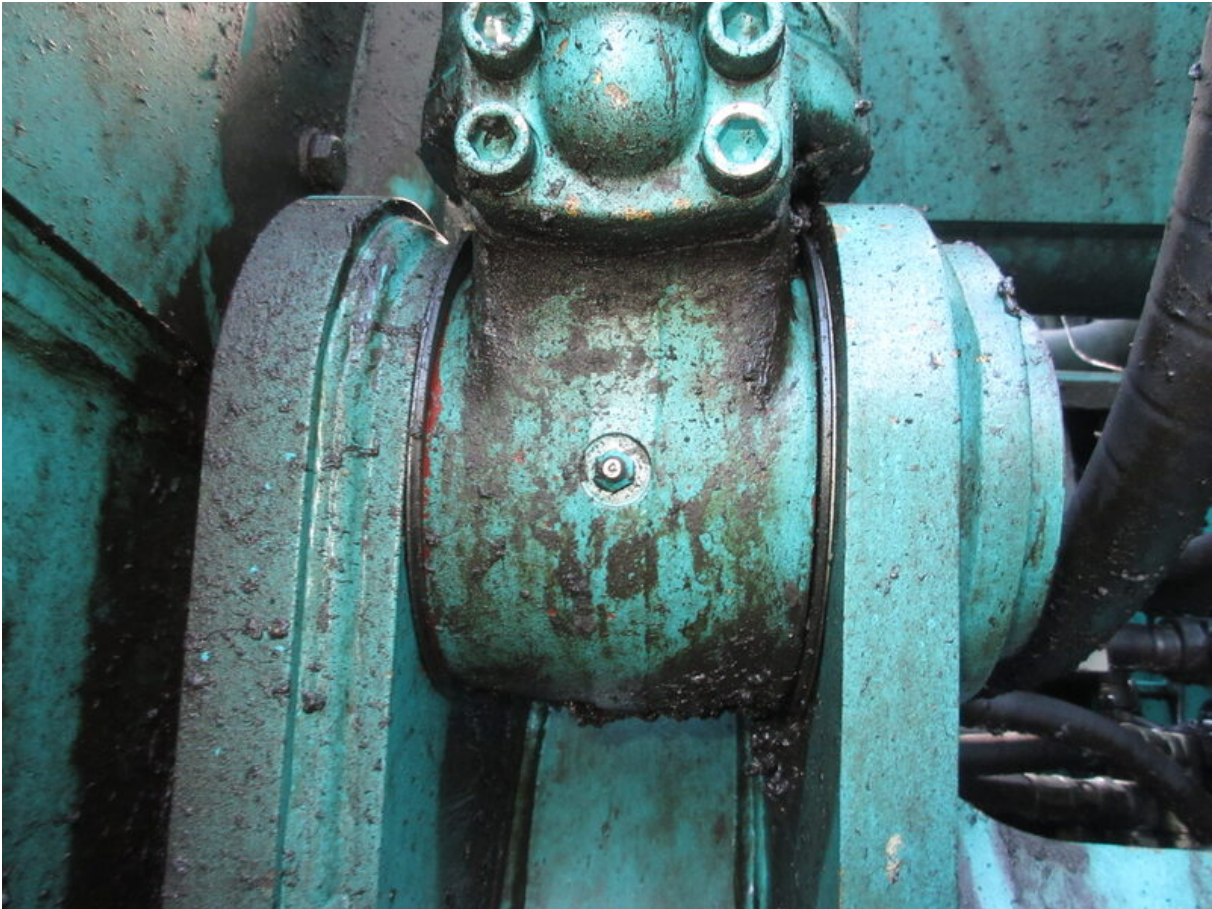


















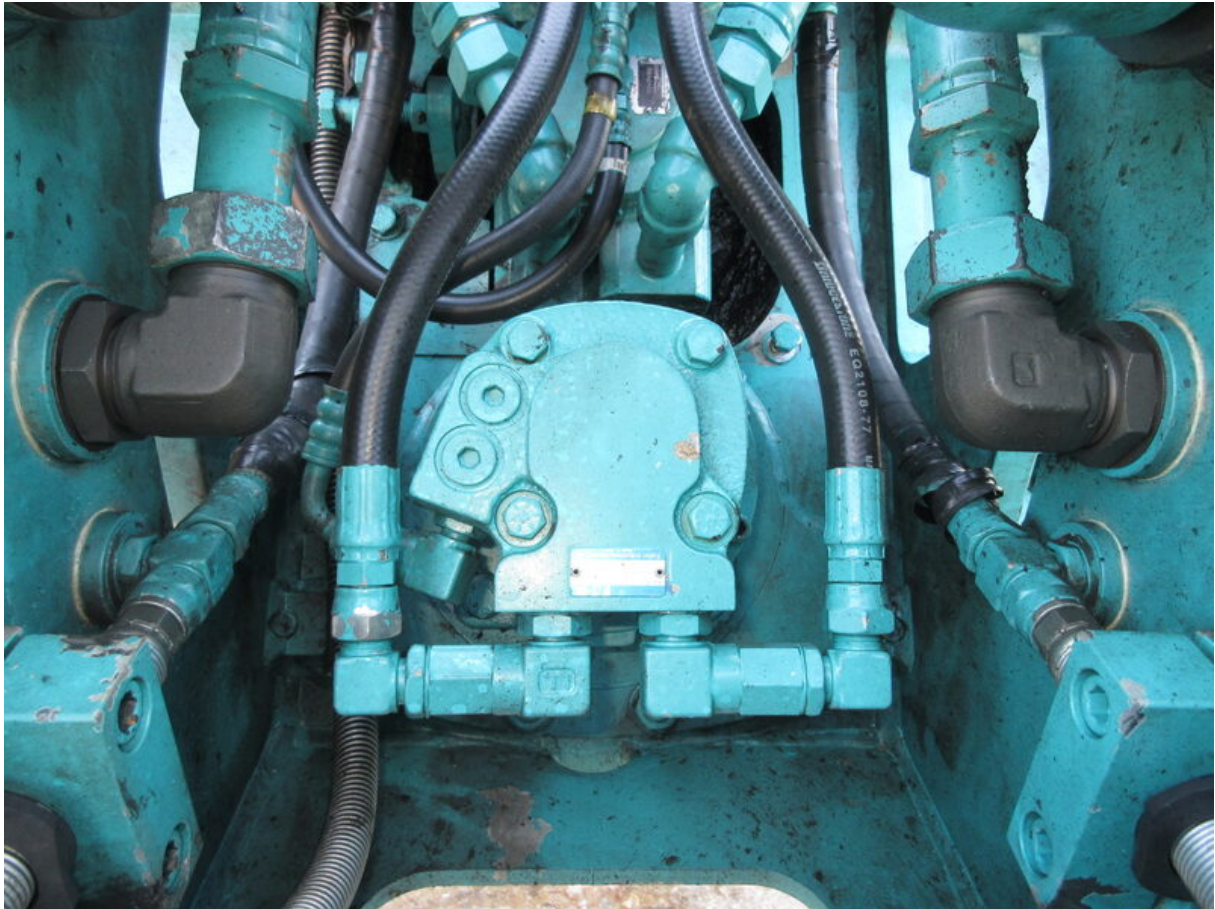


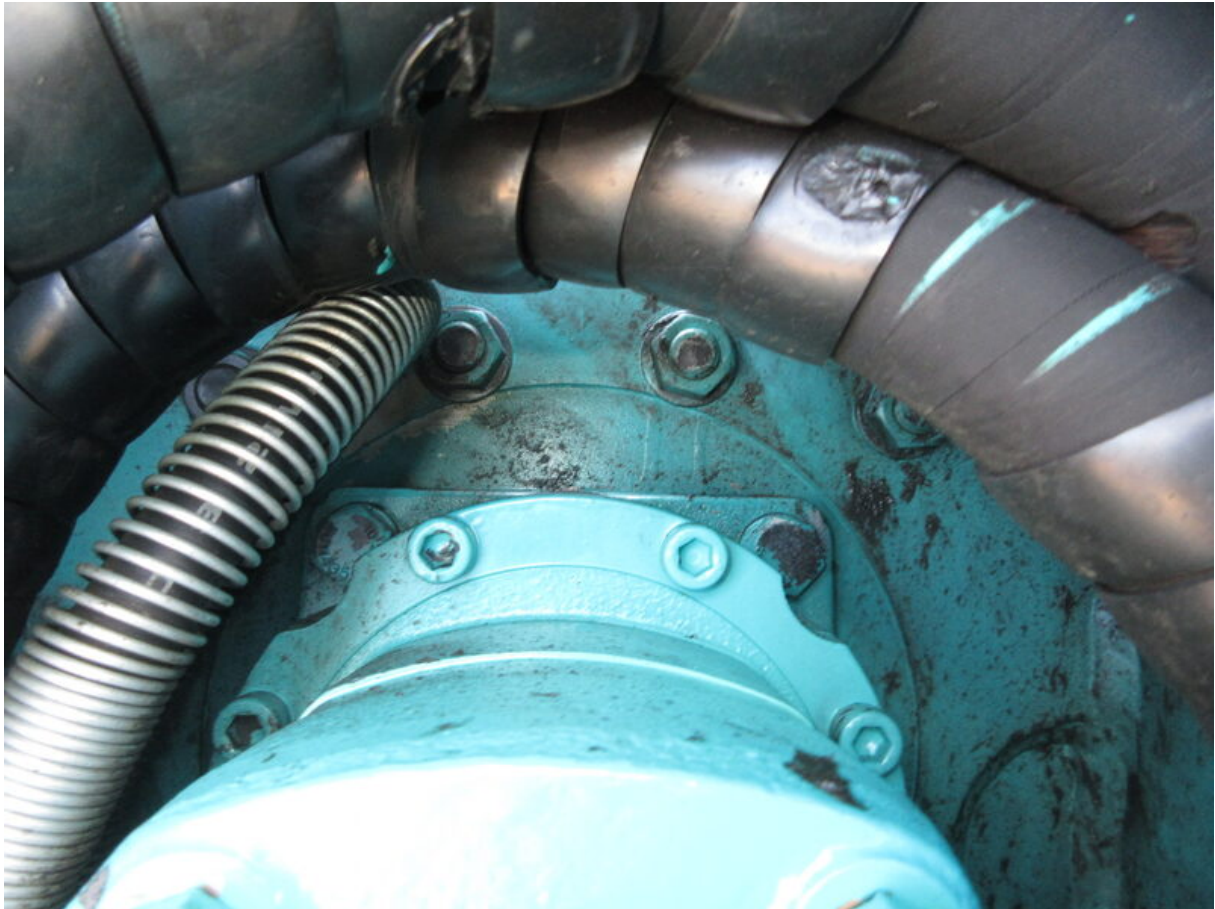




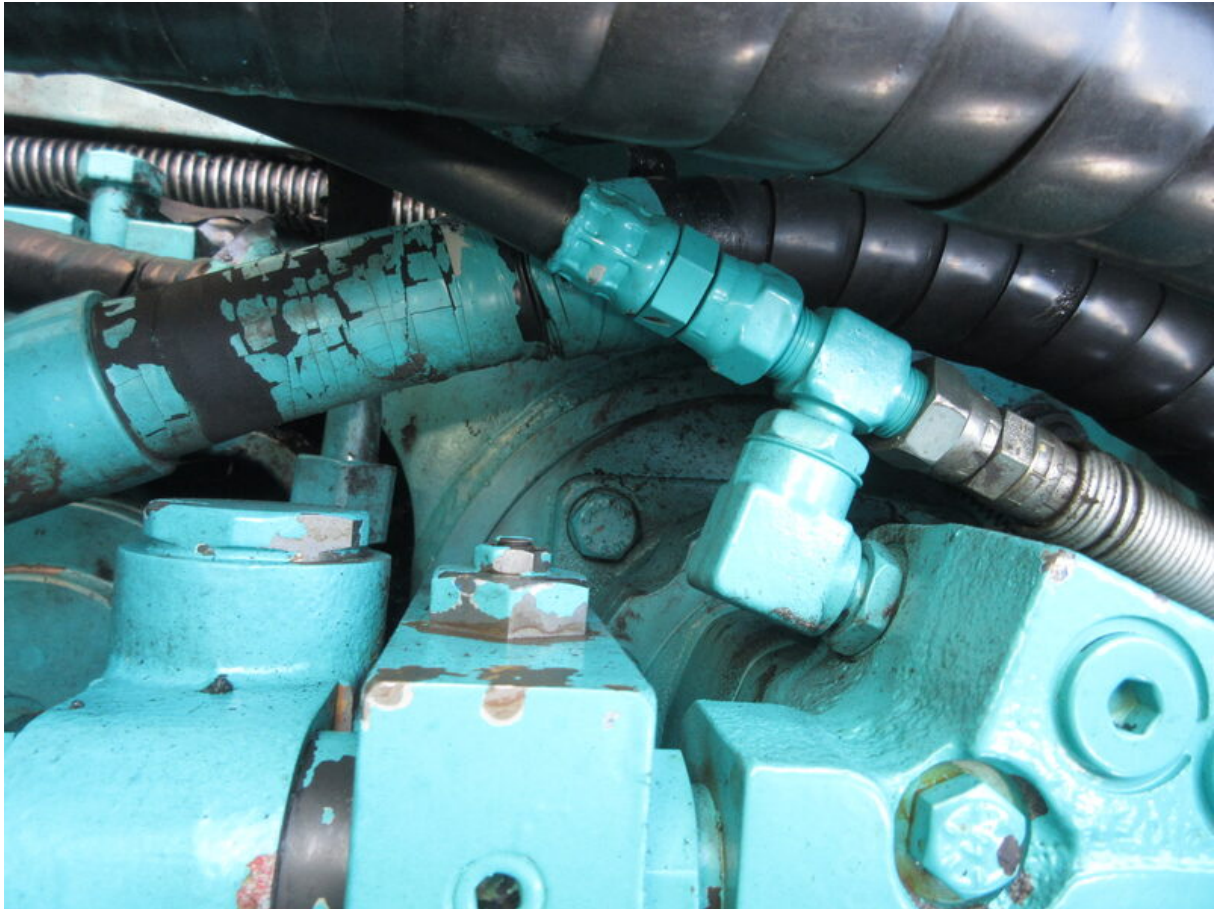


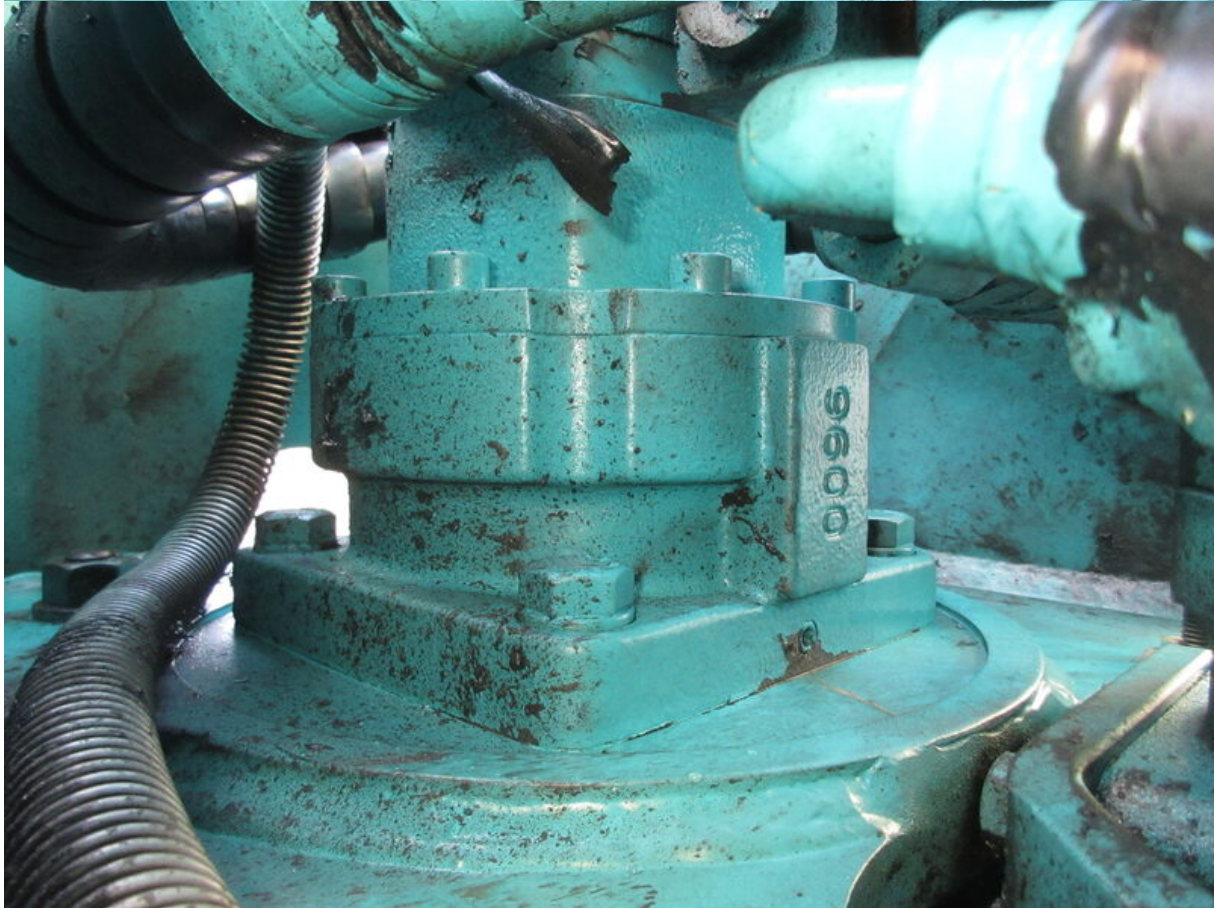
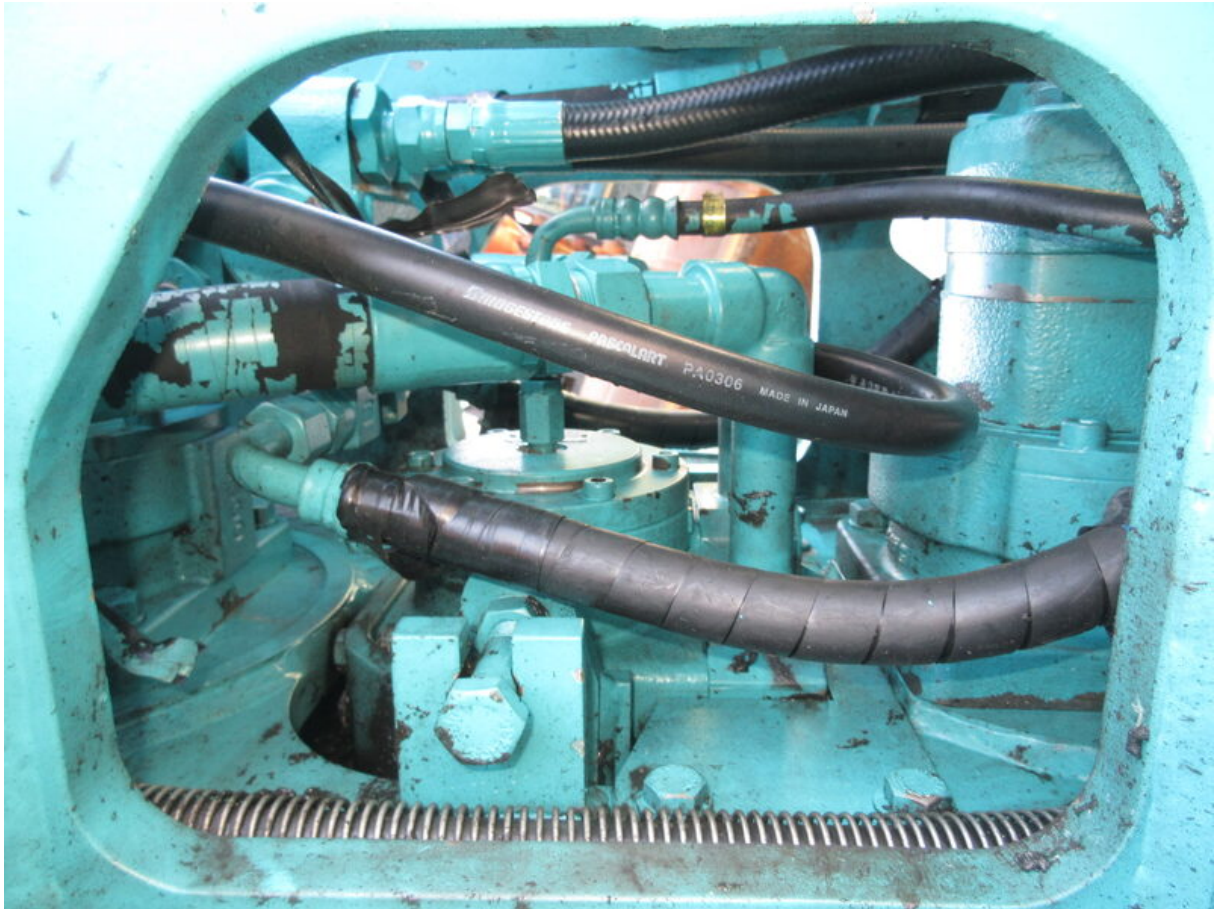


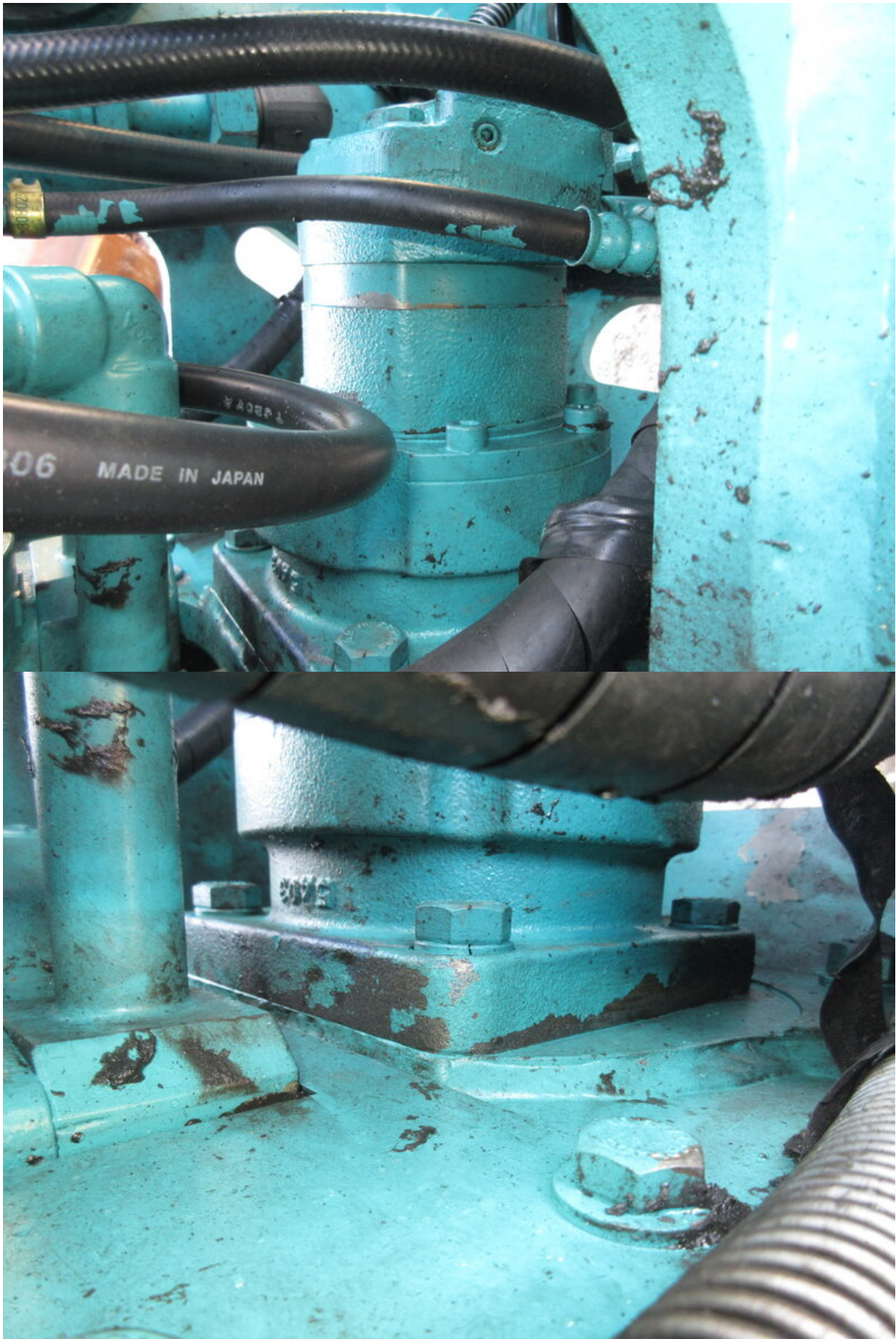




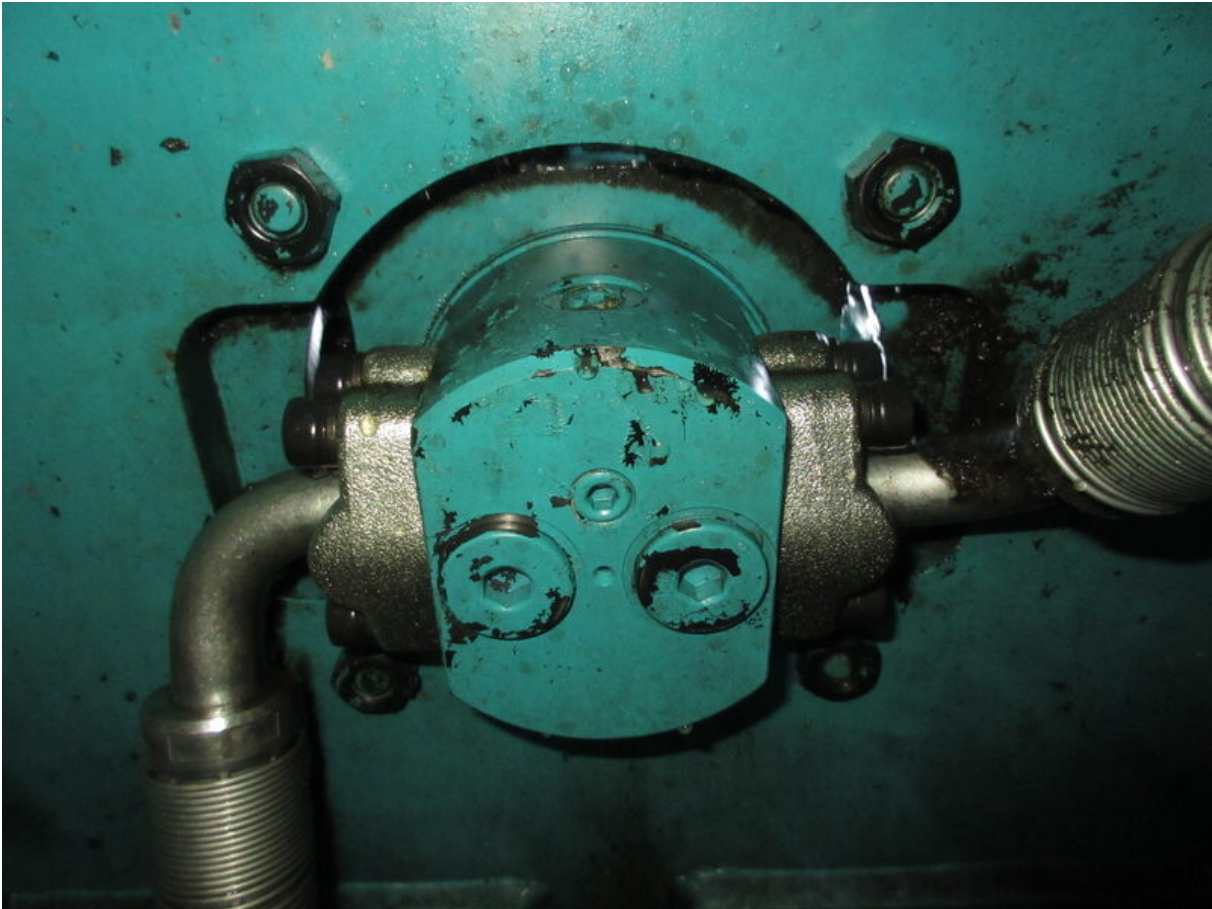




















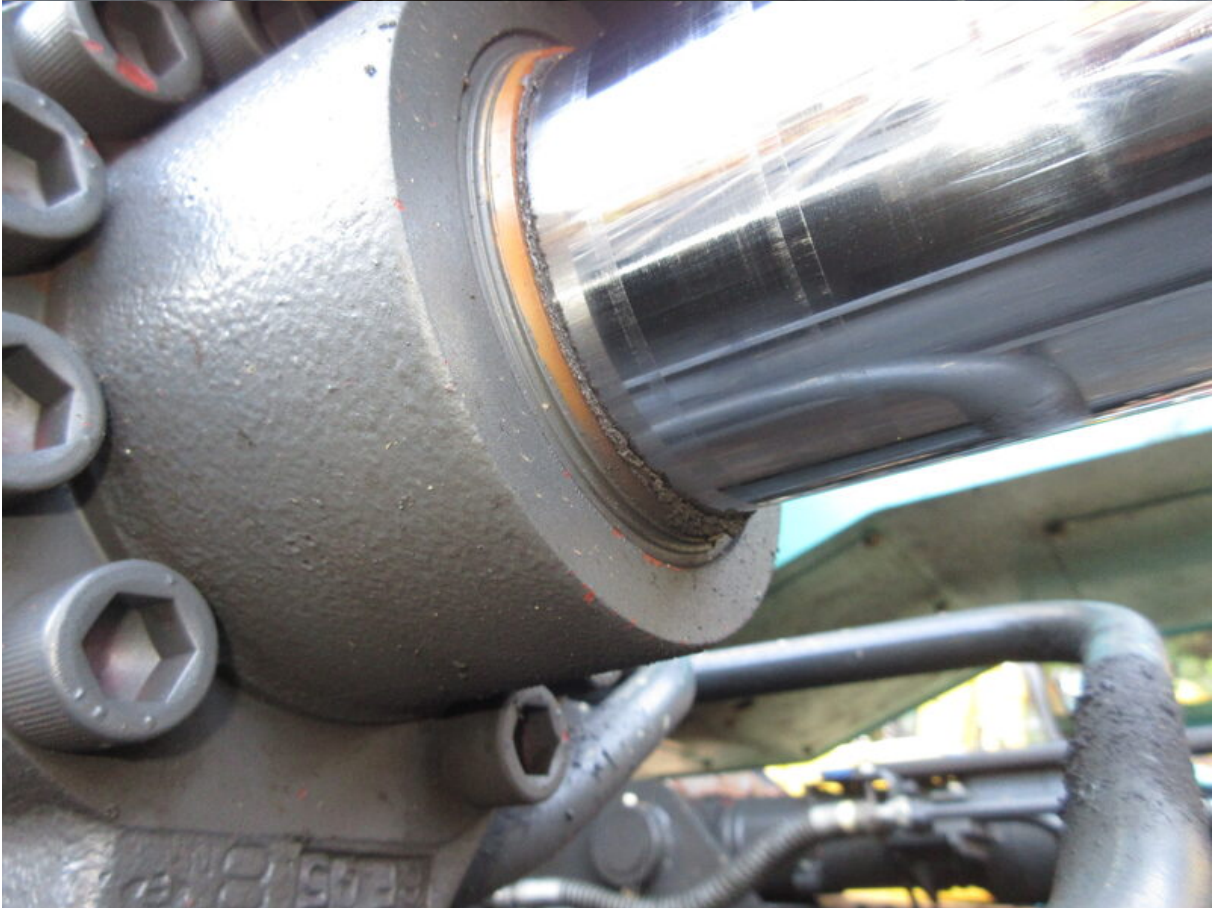
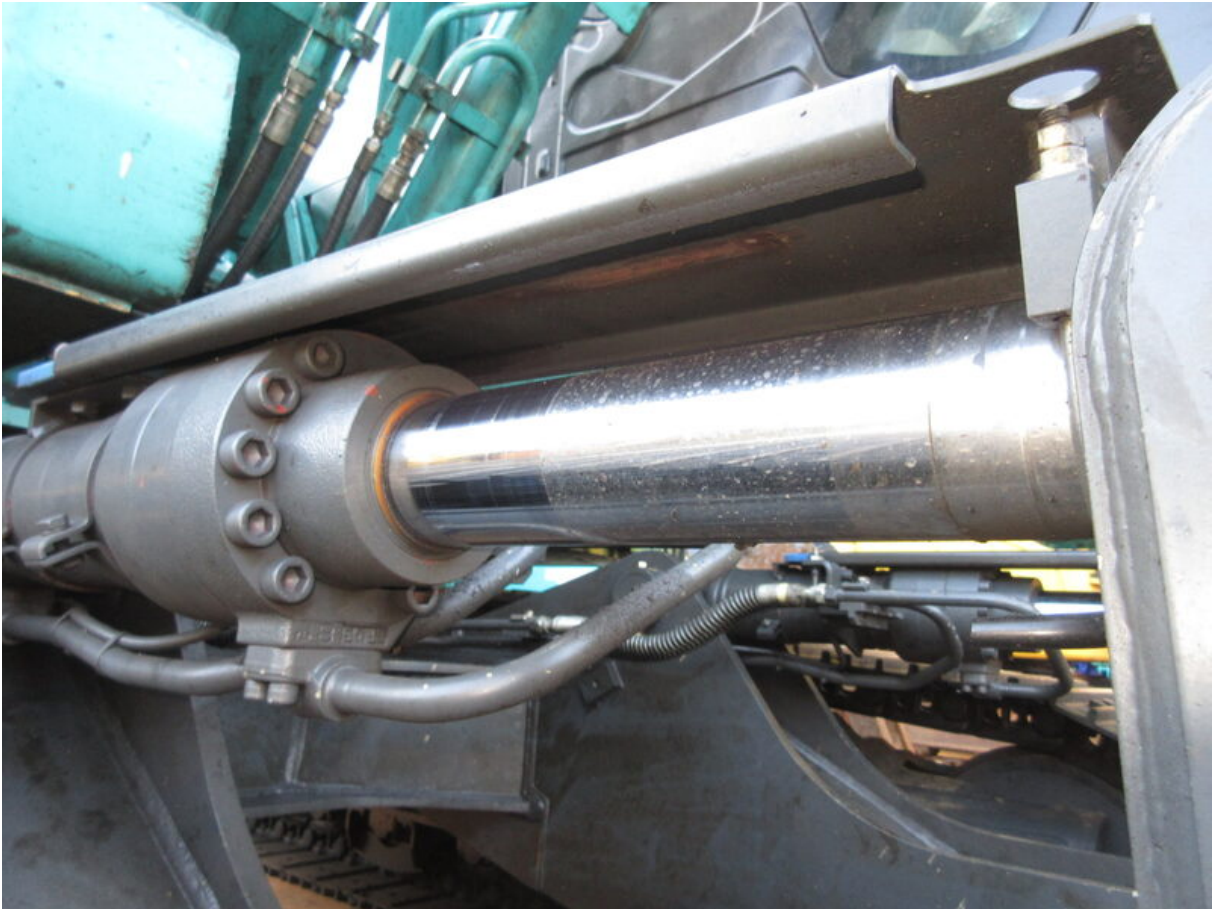




















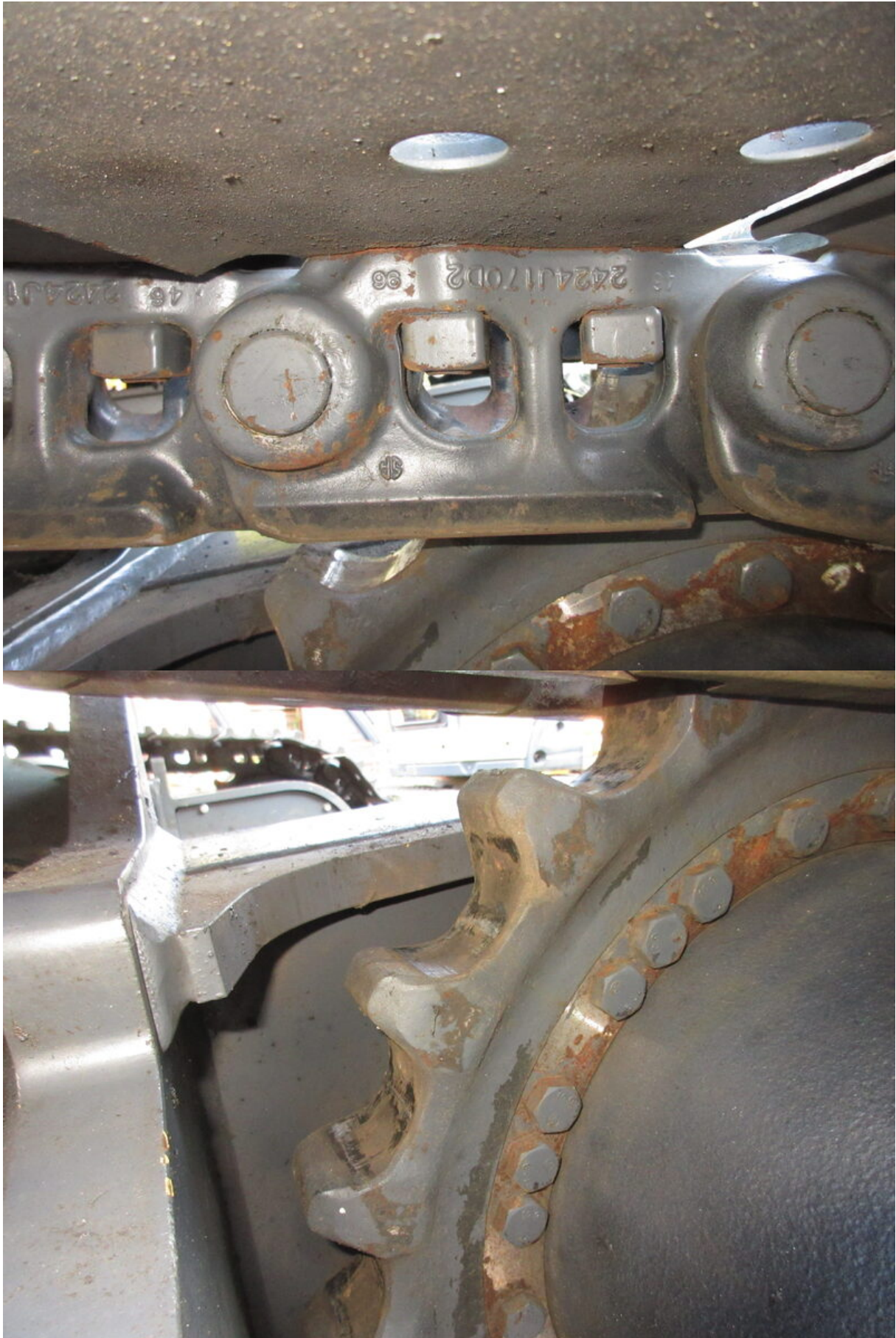






















ロータリマルチ  
コントロール  
操作パターン

操作前に取扱い説明書を読んで、操作パターンを確認してください。

( ISO : コベルコ標準  
H : コマツ, 日立, 住友  
M : 三菱, K : 神鋼 )

**⚠ 危険**

切換時はバケットを接地させ、ロックレバーを「ロック位置」にし、エンジンを停止してから実施してください。

Y120101388P1

