

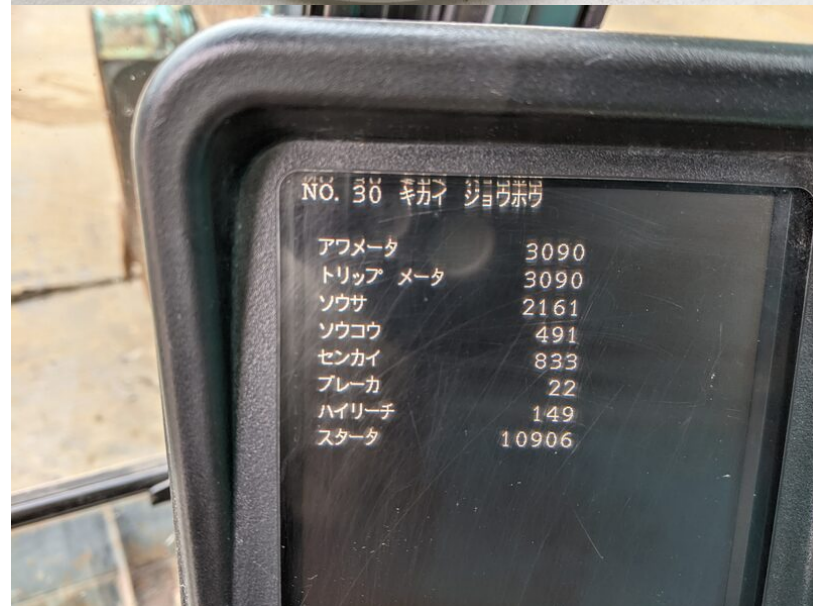
Model SK135SR-3
Year 2014

Serial YY07-26169
Hours 3089

Photos taken at Dec. 01, 2023







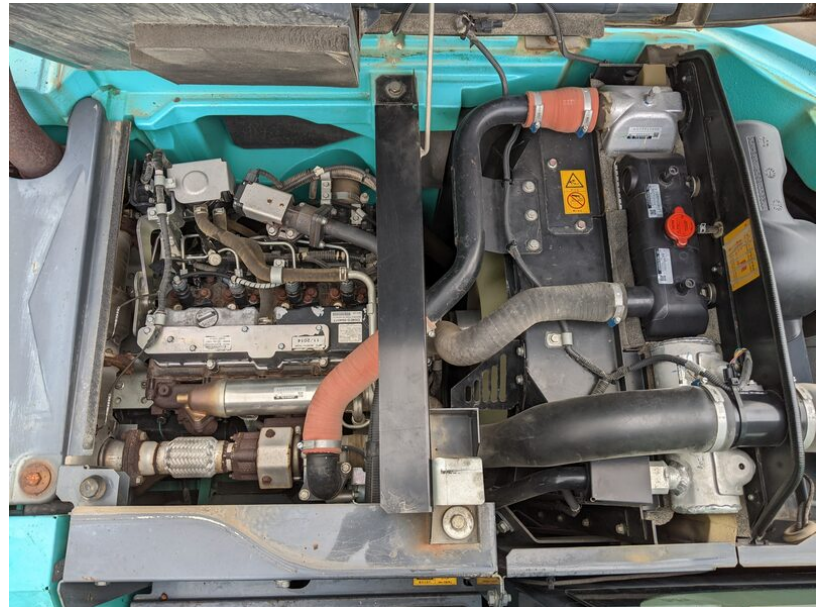
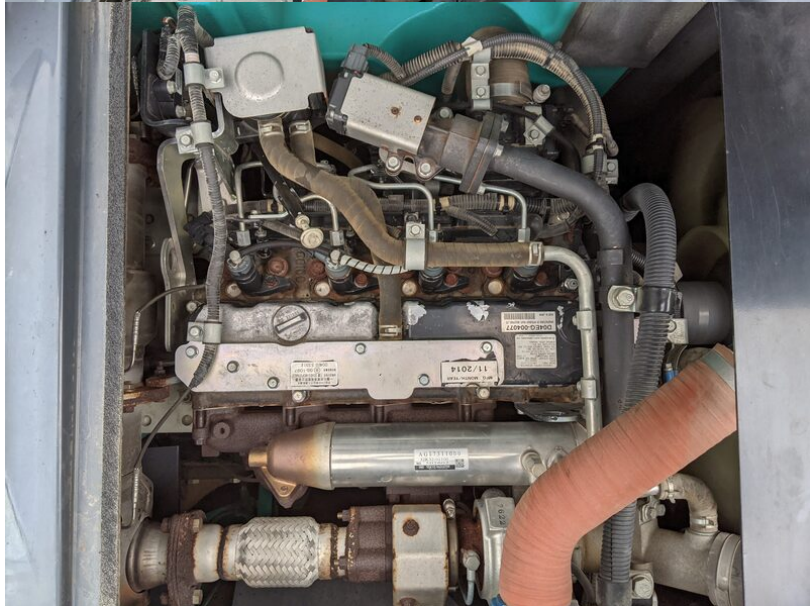












EMISSION CONTROL INFORMATION
ENGINE FAMILY: EMVXL03.3GGG
MODEL: D04EG-TAA
POWER CATEGORY: INTERIM TIER4 56≤kW-75
ENGINE DISPLACEMENT: 3.3 LITERS
EMISSION CONTROL SYSTEM:
CAC, ECM, EGR, OC, DPF, TC
ULTRA LOW SULFUR FUEL ONLY.
THIS ENGINE COMPLIES WITH U.S. EPA
REGULATIONS FOR 2014
NONROAD DIESEL ENGINES.
MITSUBISHI HEAVY INDUSTRIES, LTD.
32K93-00602 4G5

D04EG-004077
MANUFACTURED BY MITSUBISHI HEAVY INDUSTRIES, LTD.
MADE IN JAPAN

