

Model PC45MR-5
Year 2017

Serial 31493
Hours 2322

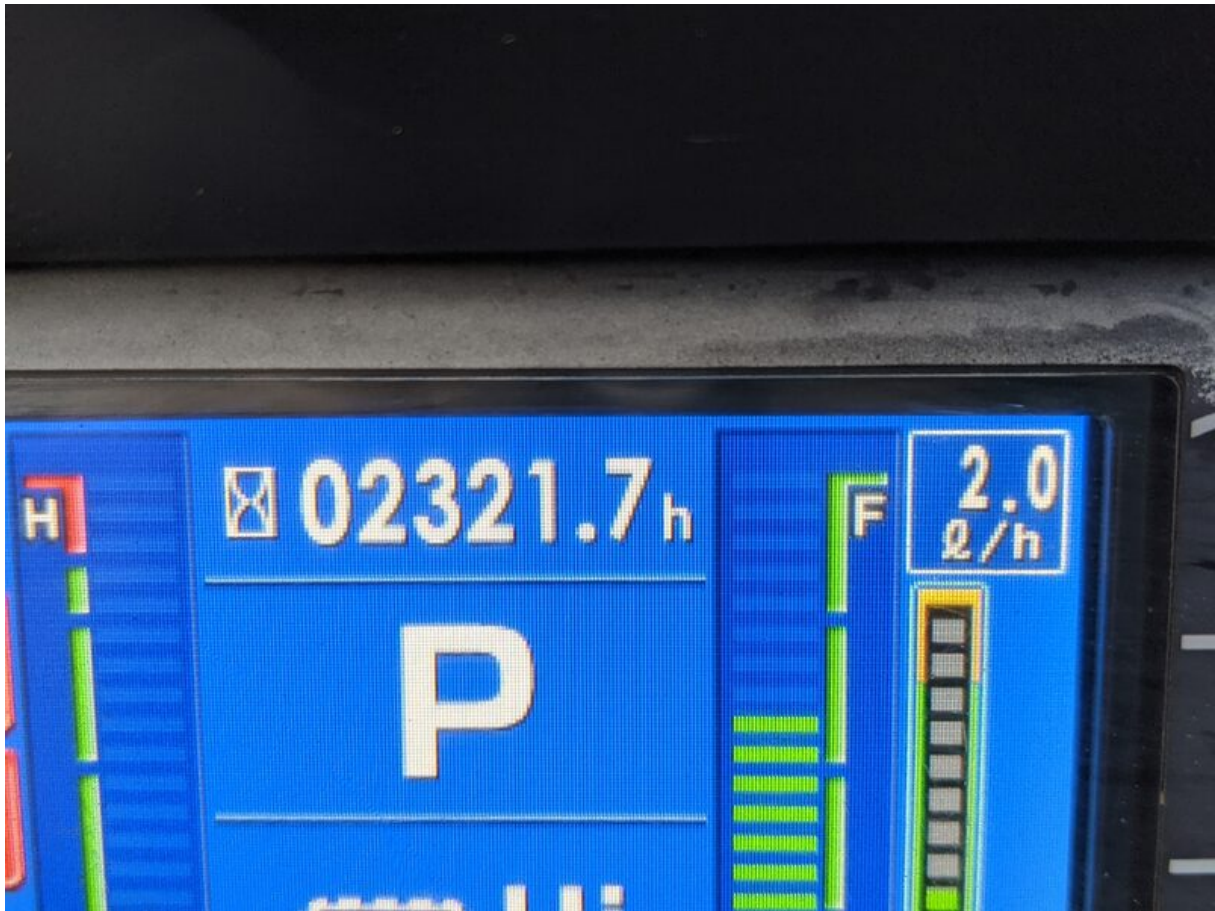
Photos taken at Dec. 06, 2023







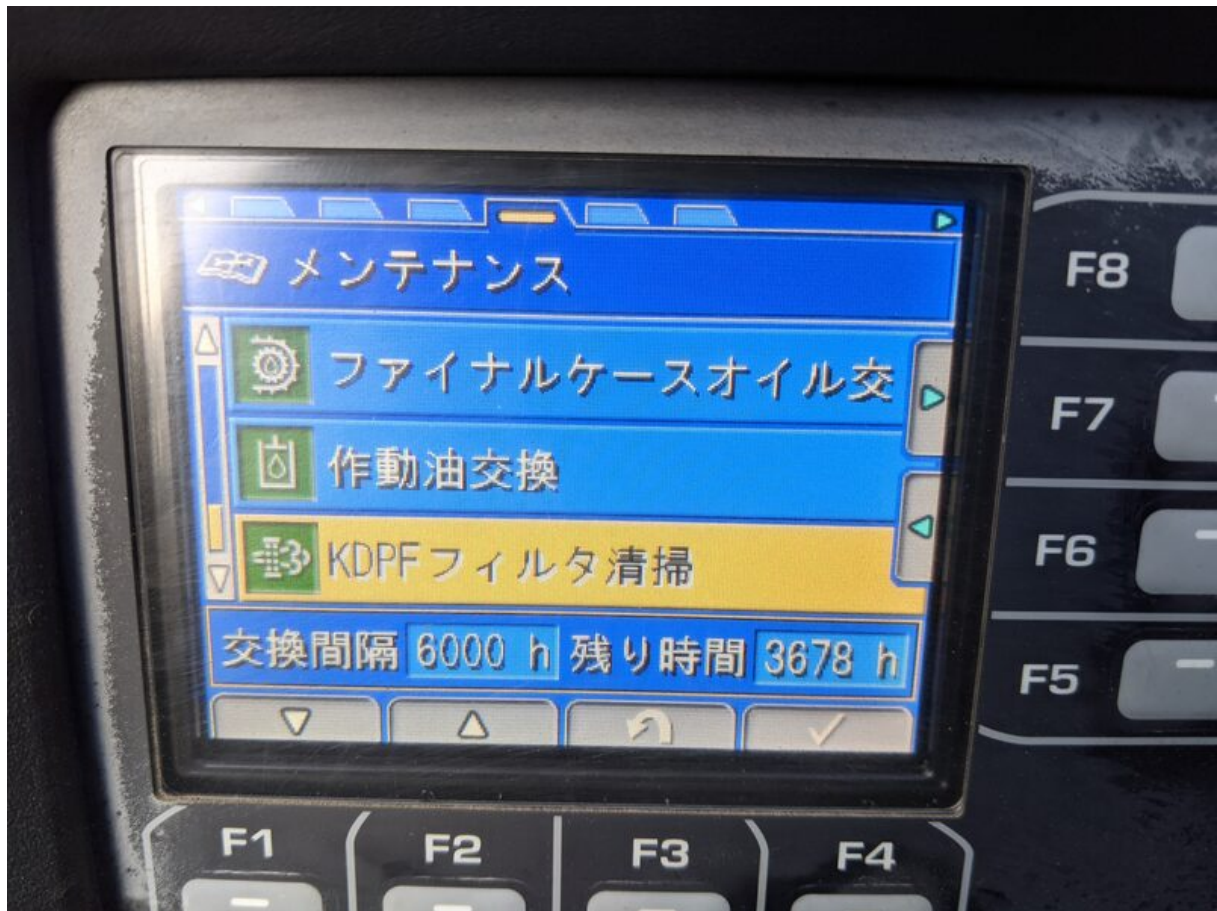


























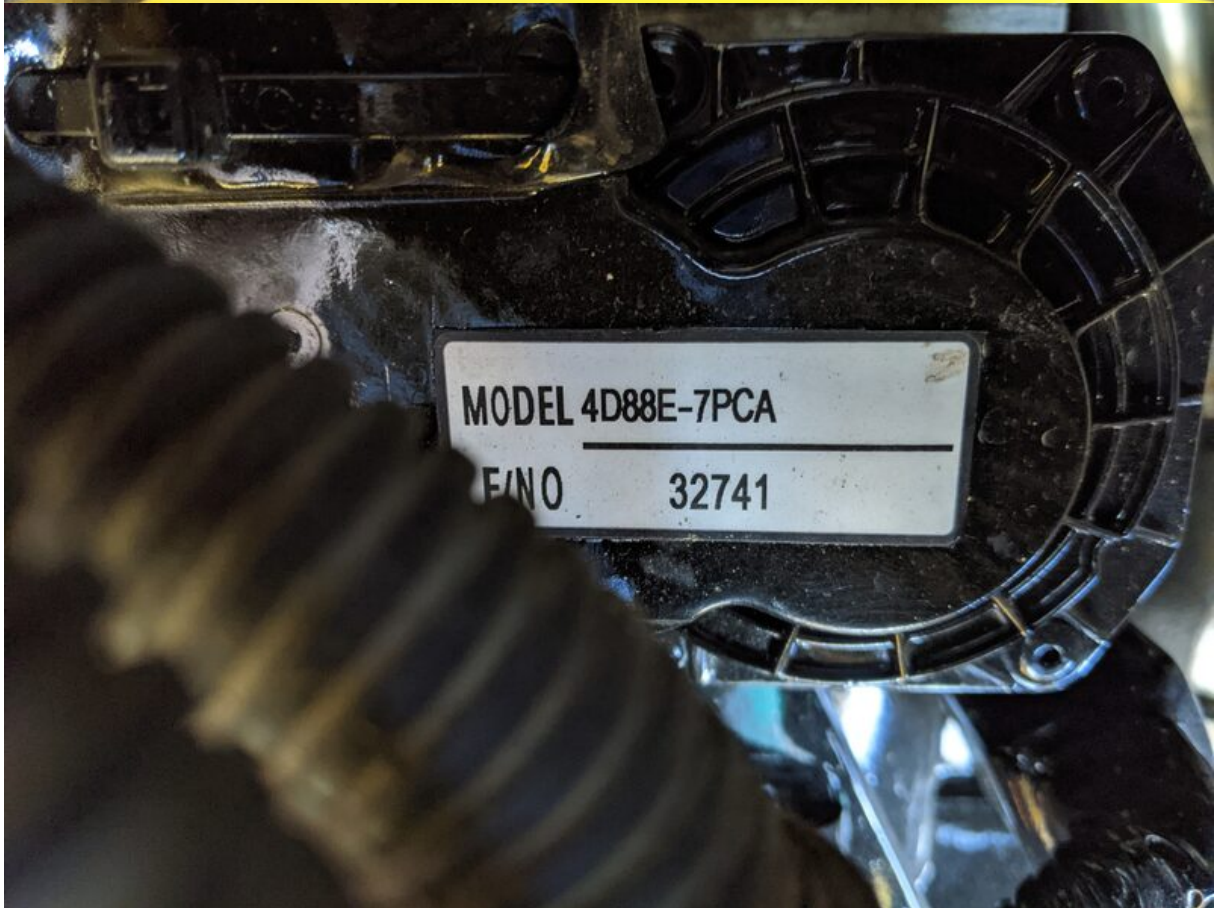


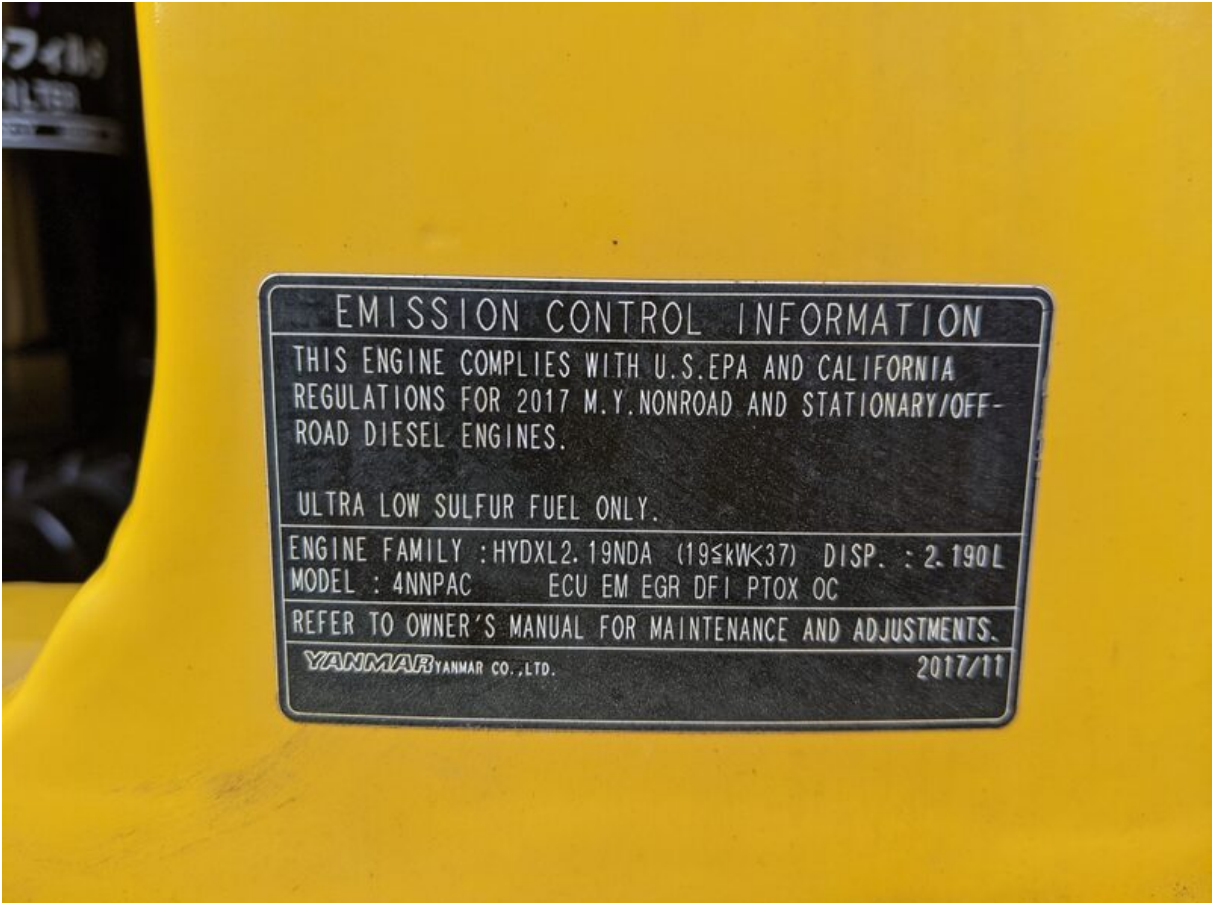












EMISSION CONTROL INFORMATION

THIS ENGINE COMPLIES WITH U.S.EPA AND CALIFORNIA REGULATIONS FOR 2017 M.Y.NONROAD AND STATIONARY/OFF-ROAD DIESEL ENGINES.

ULTRA LOW SULFUR FUEL ONLY.

ENGINE FAMILY : HYDXL2.19NDA (19≤kW<37) DISP. : 2.190L
MODEL : 4NNPAC ECU EM EGR DFI PTOX OC

REFER TO OWNER'S MANUAL FOR MAINTENANCE AND ADJUSTMENTS.

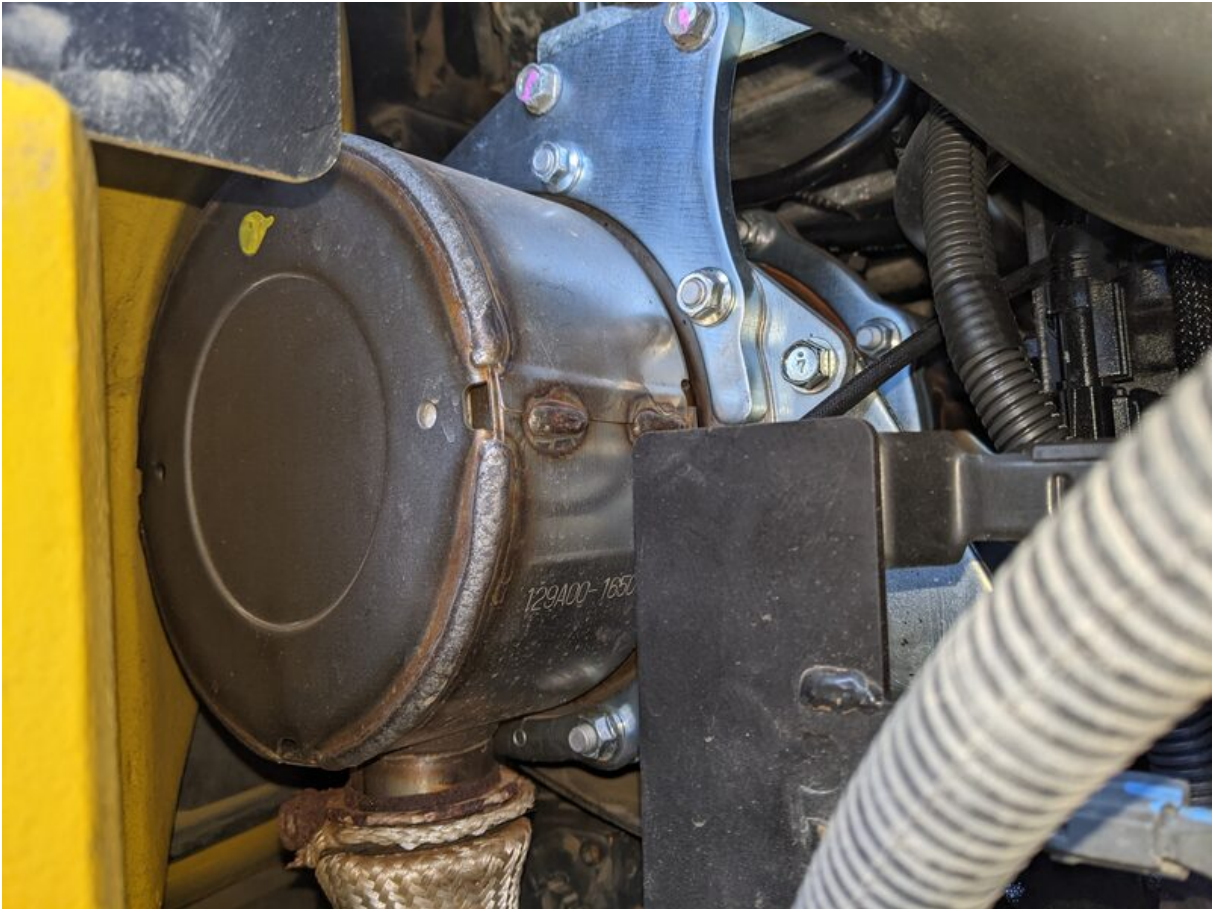
YANMAR YANMAR CO.,LTD.

2017/11











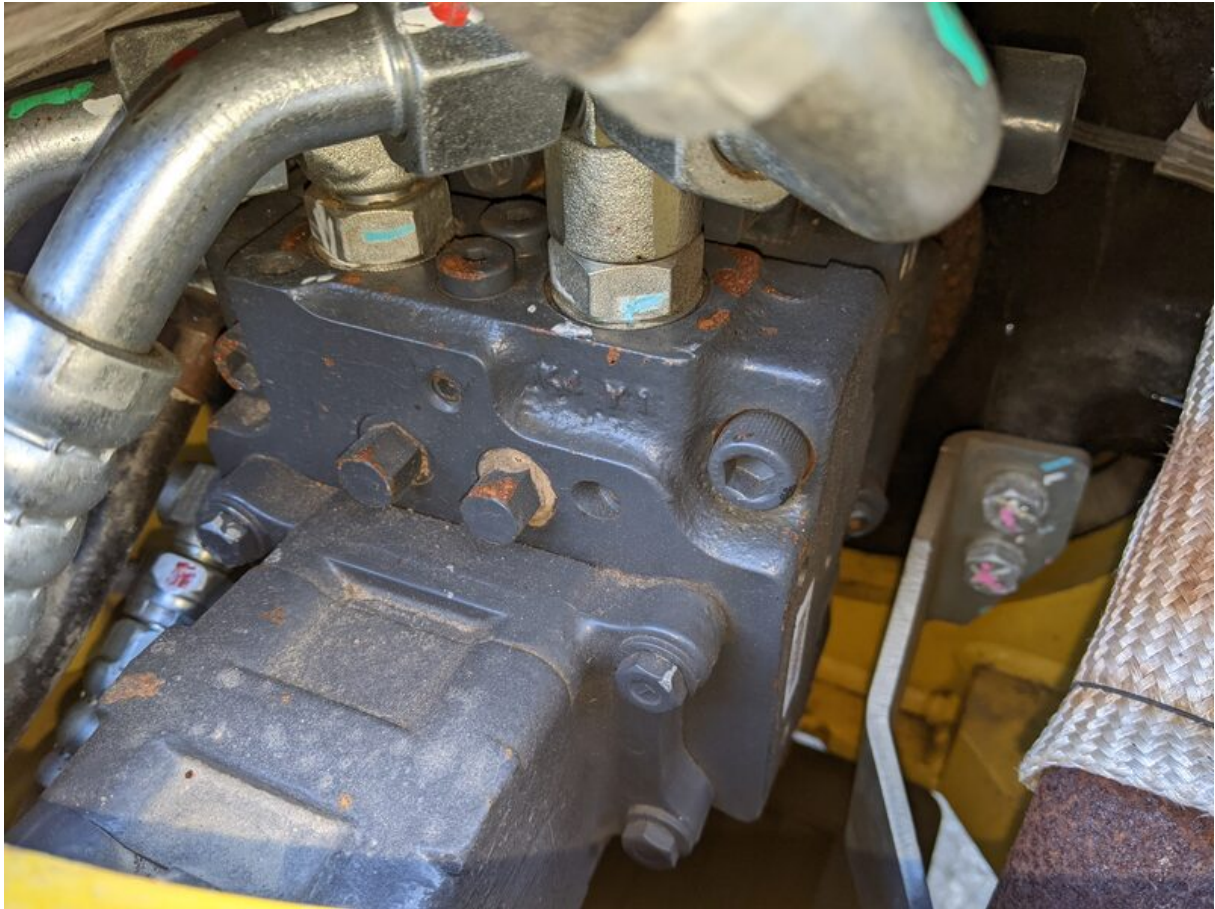






































































































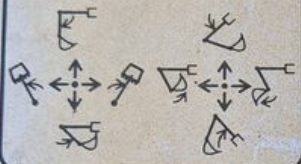
旧コマツ

22L-98-21231

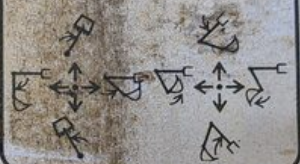
- ・操作パターン切換
ロックレバーを
- ・操作パターン切換
(デテントを確認)
- ・操作パターン切換
必ず差し替えて

操作パターン切換テーブル

JISパターン



旧小松パターン



操作パターン切換テーブル

旧三菱パターン



旧神鋼パターン



21U-98-31410

