

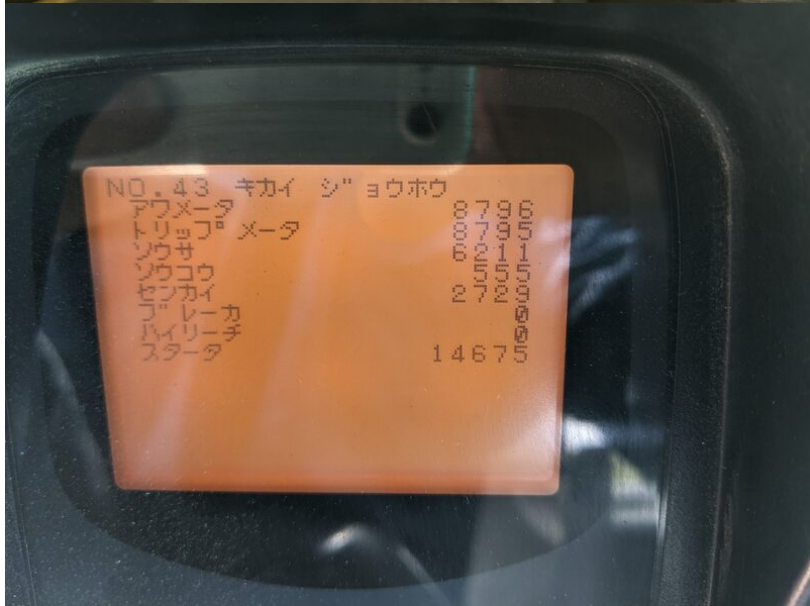
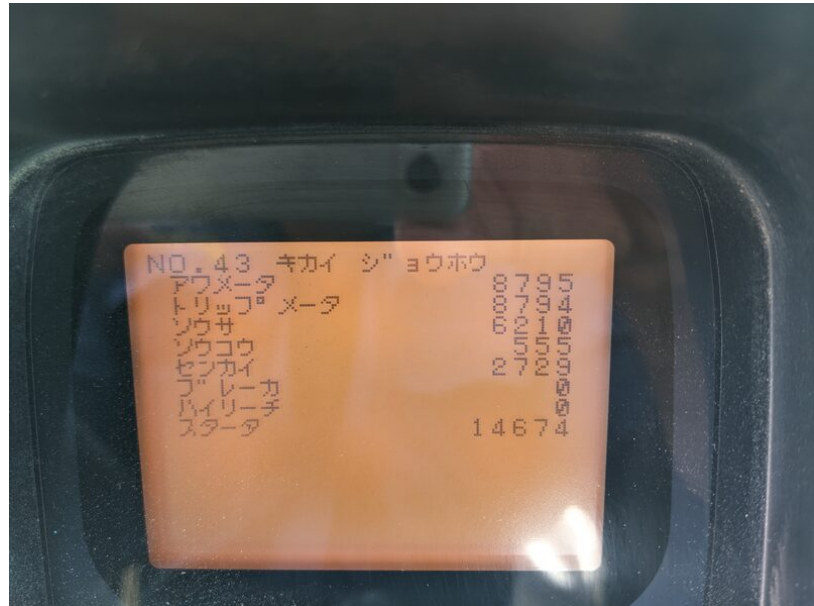
Model SK210DLC-8
Year 2009

Serial YQ11-07206
Hours 8885

Photos taken at Apr. 16, 2024









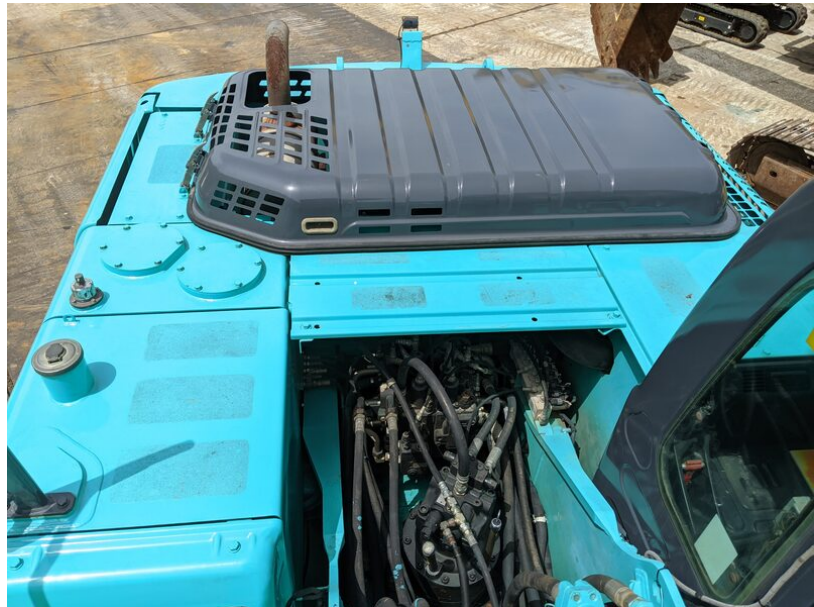














型式核准的功率范围: 75kW ≤ Pmax < 130kW
 限值阶段: II 生产日期 2008/11
 日野自動車株式会社

IMPORTANT ENGINE INFORMATION E90

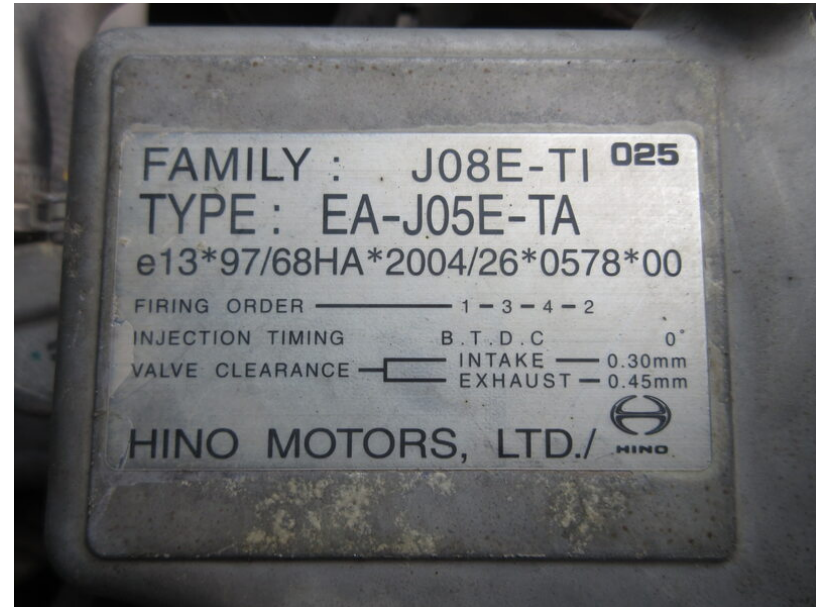
ENGINE FAMILY IDENT: 8HMXL05.1JTA	THIS ENGINE CONFORMS TO 2008 MY CALIFORNIA AND US EPA REGULATIONS FOR LARGE-NON ROAD COMPRESSION-IGNITION ENGINES.
ENGINE MODEL: AA-J05E-TA	
DATE OF MANUFACTURE: 2008/11	
ADJUSTMENTS	
DISPLACEMENT: 5.123 l	
ADVERTISED HP (SAE GROSS): 158 HP @2000R.P.M.	THIS ENGINE IS CERTIFIED TO OPERATE ON DIESEL FUEL.
FUEL RATE @ADVHP: 126.0±4.0 MM ³ /STROKE	
VALVE LASH: 0.30 MM.(SUC.), 0.45 MM.(EXH.)	
INITIAL INJECTION TIMING: 0 DEG. BTDC	

HINO MOTORS, LTD. /

排出ガス対策型
J05E-TA

着火順序 FIRING ORDER	————— 1-3-4-2
噴射時期 INJECTION TIMING	————— 上死点前・B.T.D.C 0°
バルブクリアランス VALVE CLEARANCE	————— 吸気・INTAKE — 0.30mm 排気・EXHAUST — 0.45mm

HINO



FAMILY : J08E-TI 025
 TYPE : EA-J05E-TA
 e13*97/68HA*2004/26*0578*00

FIRING ORDER ————— 1-3-4-2
 INJECTION TIMING B.T.D.C 0°
 VALVE CLEARANCE — INTAKE — 0.30mm
 EXHAUST — 0.45mm

HINO MOTORS, LTD. /



