

Model SK210DLC-8

Serial YQ11-07206

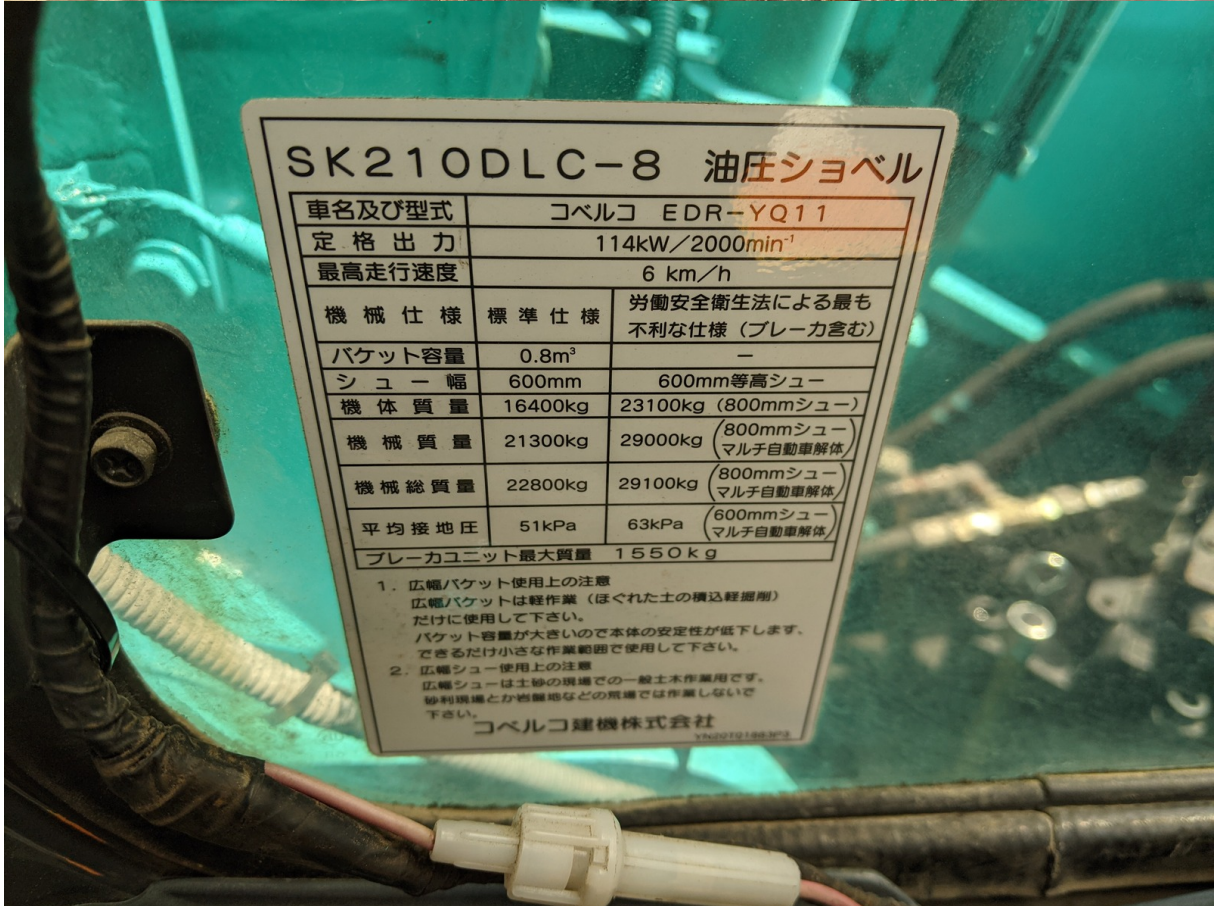
Year 2009

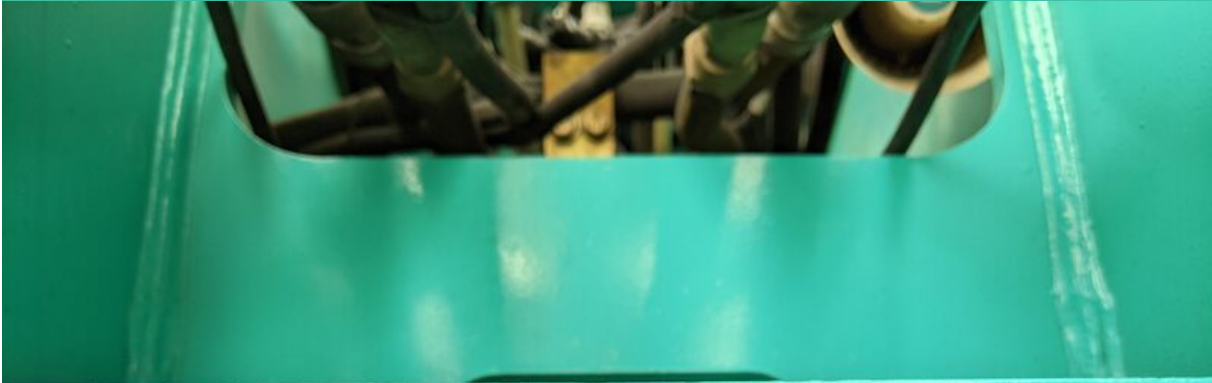
Hours 8885

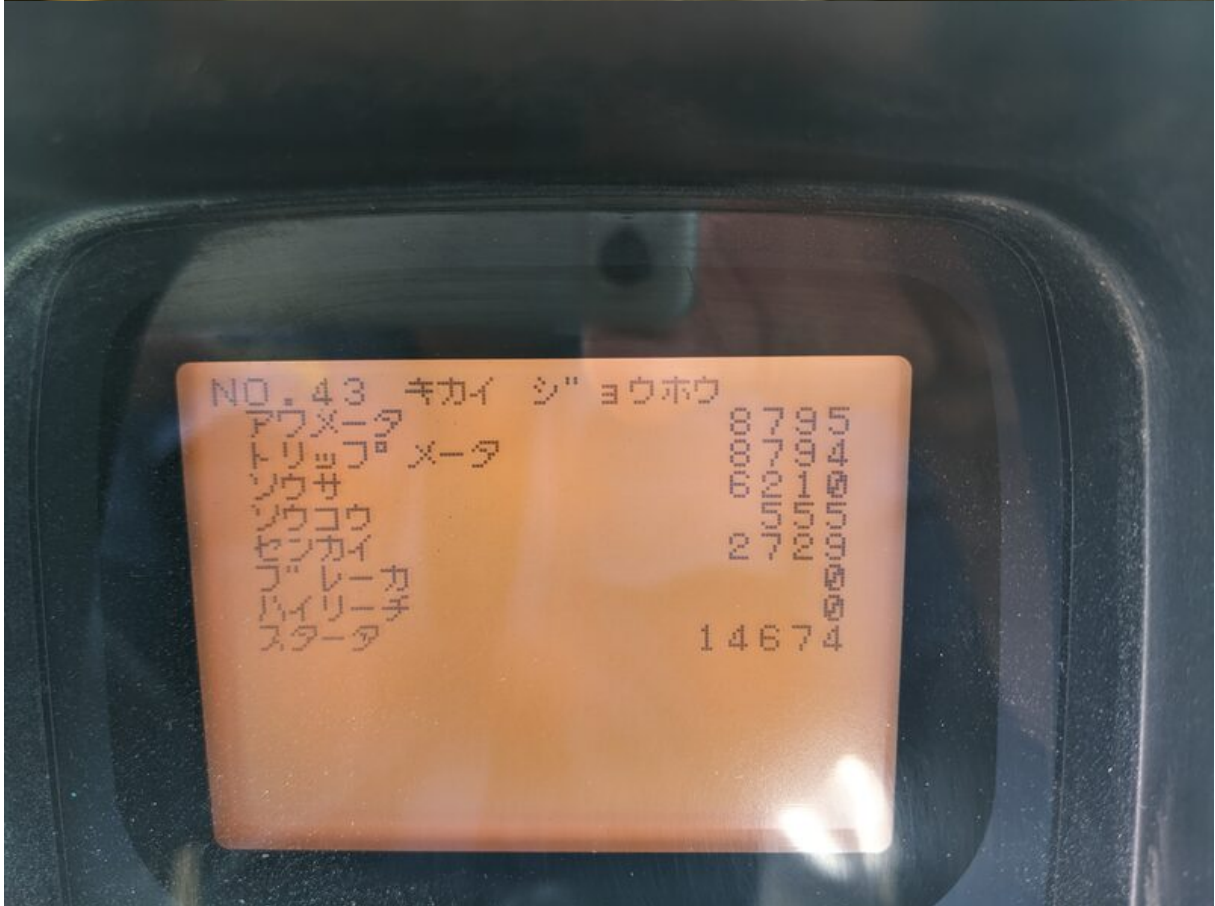
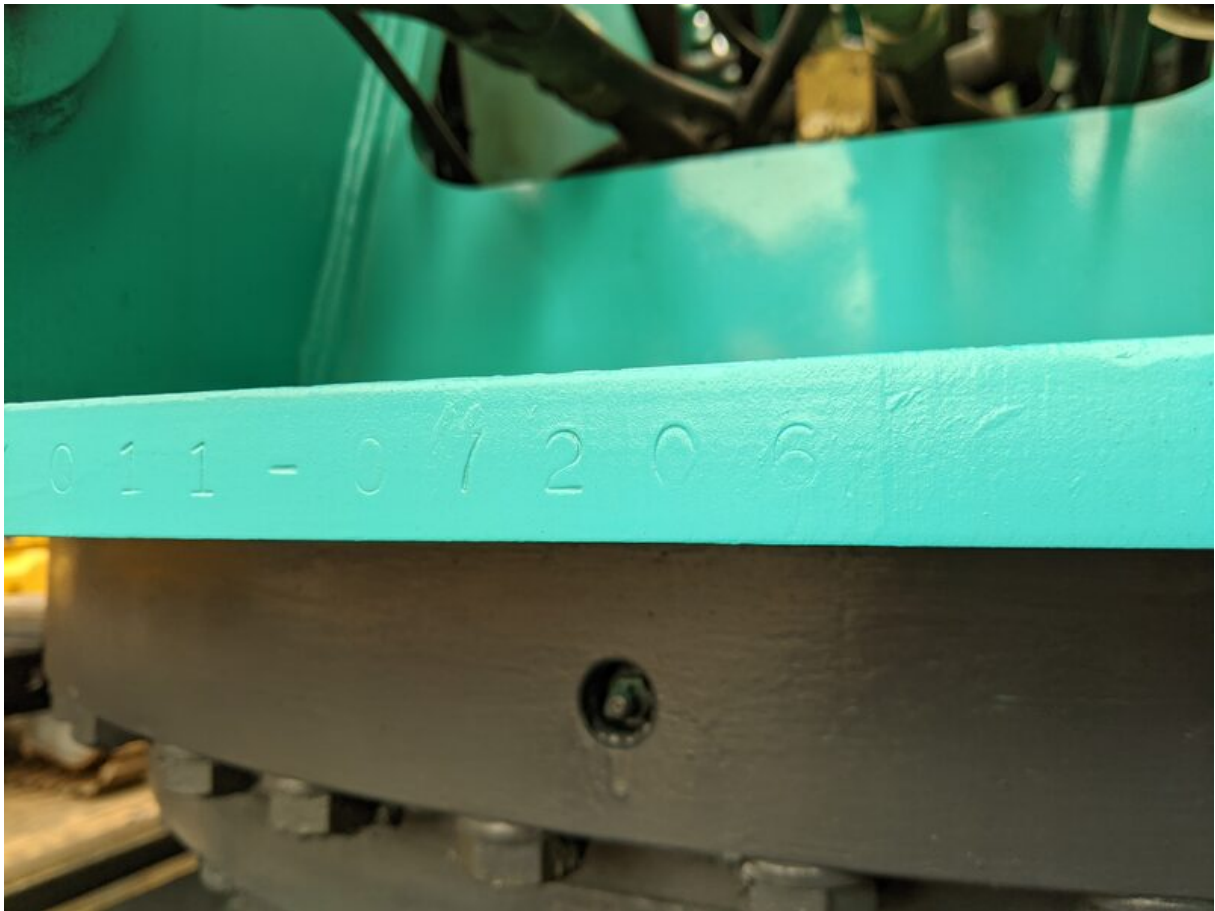
Photos taken at Apr. 16, 2024

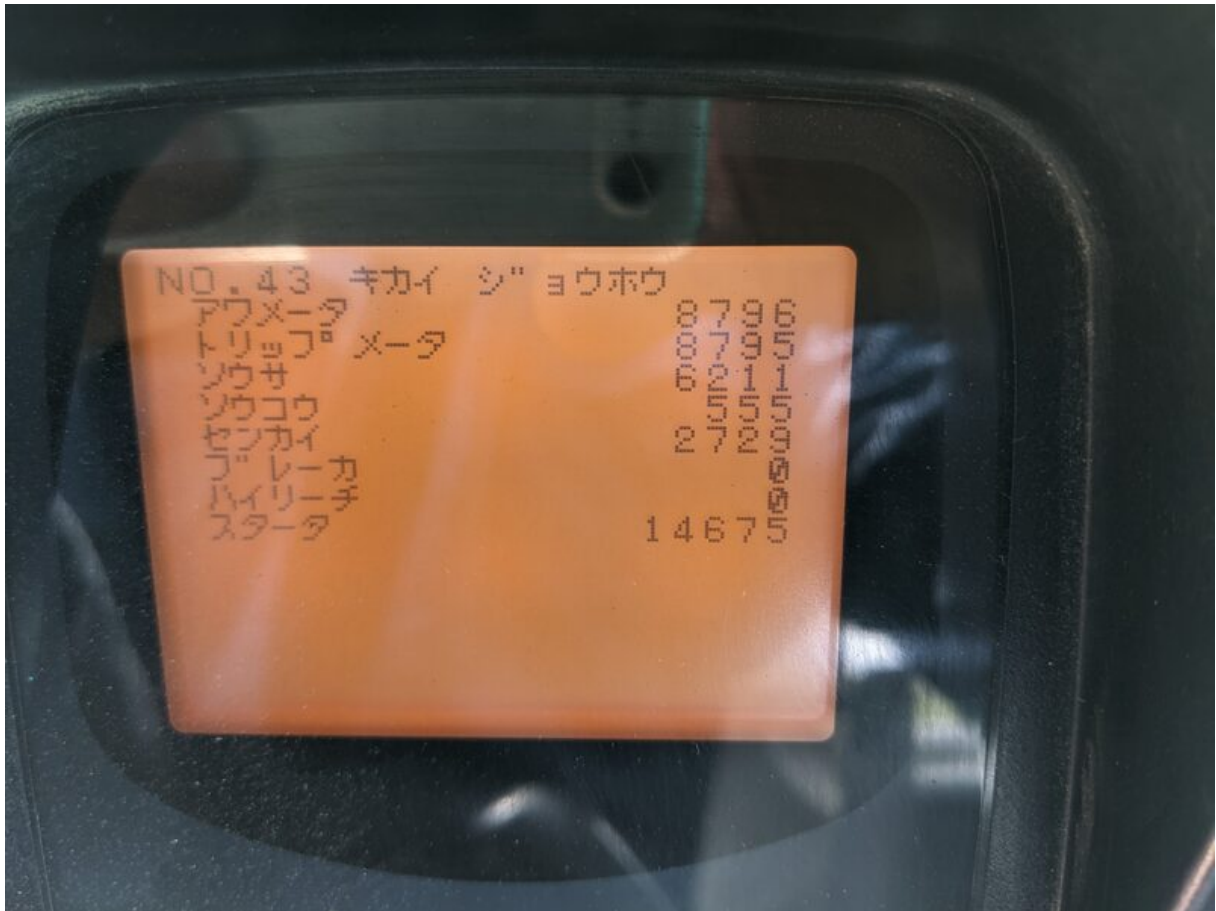











































型式核准的功率范围: 75kW ≤ Pmax < 130kW
限值阶段: II 生产日期 2008/11
日野自動車株式会社

IMPORTANT ENGINE INFORMATION E90

ENGINE FAMILY IDENT: 8HMXL05.1JTA
ENGINE MODEL: AA-J05E-TA
DATE OF MANUFACTURE: 2008/11
ENGINE SPECIFICATIONS AND ADJUSTMENTS
DISPLACEMENT: 5.123 l
ADVERTISED HP (SAE GROSS): 158 HP @2000R.P.M.
FUEL RATE @ADVHP: 126.0±4.0 MM³/STROKE
VALVE LASH: 0.30 MM.(SUC.); 0.45 MM.(EXH.)
INITIAL INJECTION TIMING: 0 DEG. BTDC

THIS ENGINE CONFORMS TO 2008 MY CALIFORNIA AND US EPA REGULATIONS FOR LARGE-NON ROAD COMPRESSION-IGNITION ENGINES.

THIS ENGINE IS CERTIFIED TO OPERATE ON DIESEL FUEL.

HINO MOTORS, LTD. / 



HINO

排出ガス対策型

J05E-TA

着火順序
FIRING ORDER ————— 1-3-4-2

噴射時期
INJECTION TIMING ————— 上死点前・B.T.D.C 0°

バルブクリアランス
VALVE CLEARANCE ————— 吸気・INTAKE —0.30mm
排気・EXHAUST —0.45mm

J05E TA 2008/11

