

型式 SK135SR-2
年式 2008

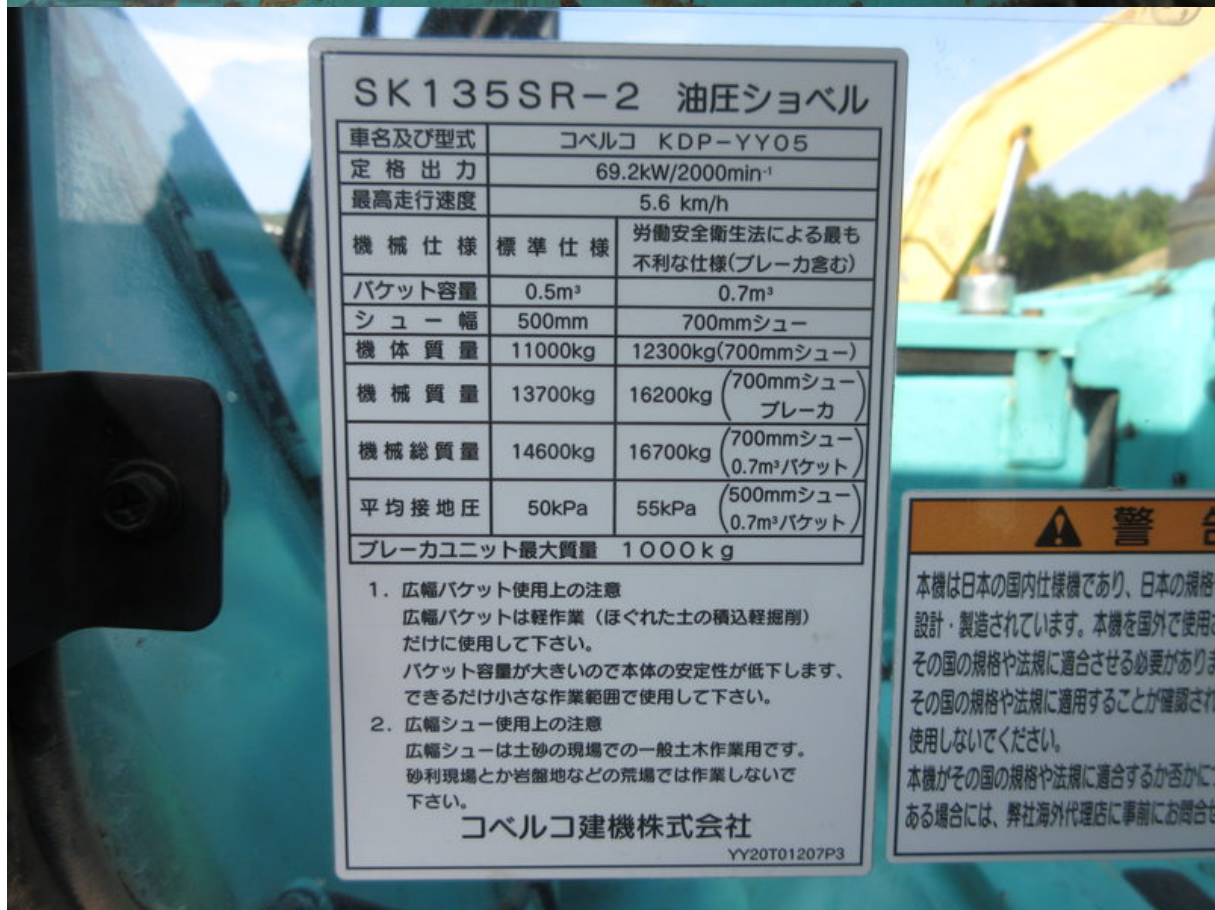
号機 YY05-12560
時間 6168

撮影日 2020年6月02日























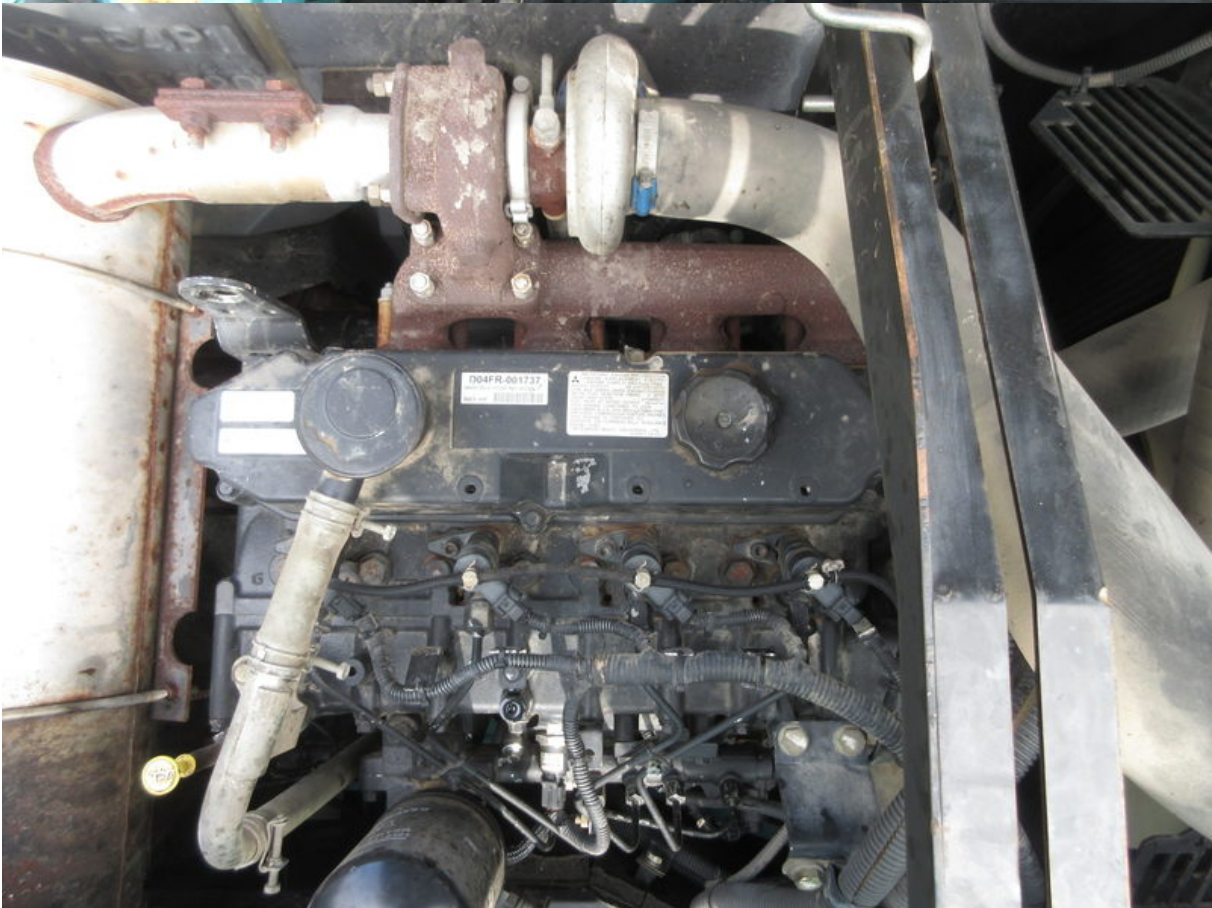
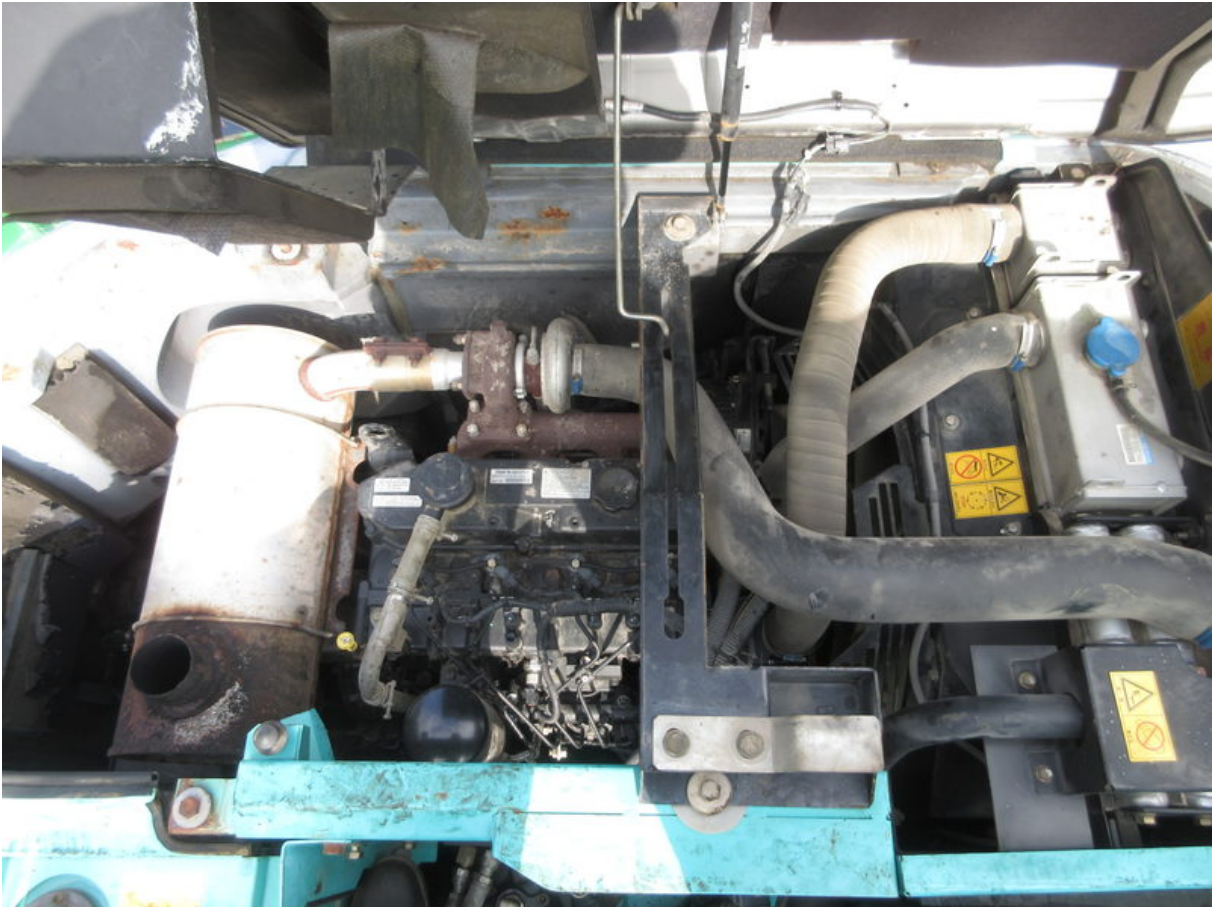
















D04FR-001737
 MANUFACTURED BY MITSUBISHI HEAVY INDUSTRIES, LTD.
 MADE IN JAPAN

IMPORTANT ENGINE INFORMATION
 ENGINE DISPLACEMENT (4.2LITRE)
 ENGINE FAMILY-8MVXL04.2BBB
 RATED OUTPUT 99.2HP/2000RPM
 LOW IDLE SPEED (BARE ENGINE)1000RPM
 INITIAL FUEL INJECTION TIMING 4° BTDC
 VALVE LASH (COLD) 0.0098INCH
 FUEL RATE AT RATED OUTPUT 86mm³/st
 THIS ENGINE CONFORMS TO 2008
 CALIFORNIA & U.S. EPA REGULATIONS FOR
 OFF-ROAD COMPRESSION-IGNITION ENGINES.
 THIS ENGINE IS CERTIFIED TO
 OPERATE ON COMMERCIALY AVAILABLE
 DIESEL FUEL.
 MITSUBISHI HEAVY INDUSTRIES, LTD.
 32G93-14100



平成20年排出ガス規制適合
 一酸化炭素等発散防止装置
 名称及び型式 三菱 D04FR-KDP2TAAC
 型式指定番号 (自) GS-388

 ENGINE TYPE D04FR-74kW
 RATED OUTPUT 74kW/2000rpm
 ENGINE FAMILY FR
 EC TYPE-APPROVAL NO.
 e11*97/68JA*2004/26*0779*00







